



WINDOW TECHNOLOGY
DOOR TECHNOLOGY
AUTOMATIC ENTRANCE SYSTEMS
BUILDING MANAGEMENT SYSTEMS



© K&B - stock.adobe.com

MORTISE LOCKS AND MULTI-POINT LOCKS

Innovative locking elements for the door

Securing technology for you



Innovative locking elements for the door

Mortise locks versus multi-point locks

The choice is yours!

Mortise lock or multi-point lock

Mortise locks typically feature only one locking point a short faceplate. In contrast, a multi-point lock with a long faceplate offers greater protection as it has several locking points and therefore secures the door more effectively and holds it in the door frame. A multipoint locking system is therefore the perfect solution for many doors.

In addition to distinguishing between mortise locks and multi-point locking systems, doors can also be used and locked in different ways. There is a difference between manual-locking and self-locking locks. When a lock is operated manually, it must always be locked via the locking cylinder when leaving the flat. In contrast, this is not necessary for automatic locks as the locking points lock automatically when the door is pulled shut.



System overview

from page 4

Manual-locking locking systems

from page 6

Self-locking locking systems

from page 24

Motor-driven locking systems

from page 44

Locking systems with fire-retardant characteristics

from page 48

Locking systems for retrofitting

from page 50

Accessories

from page 52

General information

from page 66

Mortise locks & multi-point locks

System overview

The choice is yours:
Mortise lock or multi-point lock

Type of building	Material				Application range				Standards	Product
	Timber	Steel	Aluminium	PVC	1-leaf	2-leaf	Mortise lock	Multi-point lock		
	-	-	☑	☑	☑	☑	☑	-	EN 12209 EN 14846 EN 179 EN 1125	Series 19
	☑	☑	-	-	☑	☑	☑	-	EN 12209 EN 14846 EN 179 EN 1125	Series 21
	-	-	☑	☑	☑	☑	-	☑	prEN 15685 EN 14846 DIN 18040 EN 179 EN 1125 EN 1627-1630	SECURITY 19 SECURITY 19 ADR
	☑	☑	-	-	☑	☑	-	☑	prEN 15685 EN 14846 DIN 18040 EN 179 EN 1125 EN 1627-1630	SECURITY 21 SECURITY 21 ADR
	-	-	☑	☑	☑	☑	☑	-	EN 12209 EN 179 EN 1125	Series 18
	☑	☑	-	-	☑	☑	☑	-	EN 12209 EN 179 EN 1125	Series 23
	☑	-	☑	-	☑	-	-	☑	DIN 18251-3 DIN 18040 EN 179 EN 1125 EN 1627-1630	SECURITY ePOWER Panic
	☑	-	-	-	☑	-	-	☑	DIN 18040 EN 179 EN 1125 EN 1627-1630	GU SECURITY Automatic Panic E ZSS
	☑	-	☑	☑	☑	-	-	☑	DIN 18040 EN 179 EN 1125 EN 1627-1630	GU SECURITY Automatic Panic E GU SECURITY Automatic-DR Panic E
	☑	☑	☑	☑	☑	☑*	-	☑	EN prEN 15685 DIN 18040 EN 1627-1630	GU SECURITY Automatic3 TEOR
	☑	☑	☑	☑	☑	☑	-	☑	EN prEN 15685 DIN 18040 EN 1627-1630 ***	GU SECURITY Automatic-DR (ADR)
	☑	☑	☑	☑	☑	☑	-	☑	EN prEN 15685 DIN 18040 EN 1627-1630 *	GU SECURITY Automatic3 GU SECURITY Automatic3
	☑	☑	☑	☑	☑	☑	-	☑	EN prEN 15685 DIN 18040 EN 1627-1630 **	GU SECURITY Automatic4 GU SECURITY Automatic6
	☑	-	☑	☑	☑	-	-	☑	DIN 18040 EN 1627-1630	SECURITY ePOWER Home
	☑	☑	☑	☑	☑	☑	-	☑	EN prEN 15685 DIN 18040 EN 1627-1630	GU SECURITY MR2, MR4 GU SECURITY MR/SZ-R
	☑	☑	☑	☑	☑	☑	-	☑	EN prEN 15685 DIN 18040 EN 1627-1630	GU SECURITY SH2, SH4
	☑	☑	☑	☑	☑	☑	-	☑	EN prEN 15685 DIN 18040 EN 1627-1630	GU SECURITY DR
	☑	☑	☑	☑	☑	☑	-	☑		GU SECURITY SZ-R
	☑	☑	☑	☑	☑	☑	-	☑		GU SECURITY EUROPA (lever-operated)
	-	-	☑	☑	☑	-	☑	-	DIN 18251	Series 13
	☑	☑	-	-	☑	-	☑	-	DIN 18251	Mortise locks to DIN 18251

The choice is yours:
Whether it be manually locking, automatically locking,
motor-driven unlocking and/or locking

Choose the right locking type
for you

manual-locking	self-locking	motor-driven unlocking**	motor-driven locking	Further information
-	Latchbolt	-	-	Page 24
-	Latchbolt	-	-	Page 26
-	Automatic latchbolt Automatic double bolt	Automatic latchbolt Automatic double bolt	-	Page 28
-	Automatic latchbolt Automatic double bolt	Automatic latchbolt Automatic double bolt	-	Page 30
Latch/Deadbolt	-	-	-	Page 10
Latch/Deadbolt	-	-	-	Page 12
-	-	Hook bolt	Hook bolt	Page 44
-	Automatic latchbolt	Automatic latchbolt	-	Page 42
-	Automatic latchbolt Automatic double bolt	Automatic latchbolt Automatic double bolt	-	Page 40
-	Automatic latchbolt	Automatic latchbolt	-	Page 38
-	Automatic double bolt	Automatic double bolt	-	Page 36
-	Automatic latchbolt	Automatic latchbolt	-	Page 32
-	Automatic double latchbolt	Automatic double latchbolt	-	Page 34
-	-	Hook bolt	Hook bolt	Page 46
Massive bolt Massive bolt/ roller locking cam	-	-	-	Page 14
Hook bolt	-	-	-	Page 16
Double bolt	-	-	-	Page 18
Roller locking cam	-	-	-	Page 20
depending on the version	-	-	-	Page 22
Latch/Deadbolt	-	-	-	Page 8
Latch/Deadbolt	-	-	-	Page 6

* on request | ** in combination with A-opener kit

Automatic latchbolt



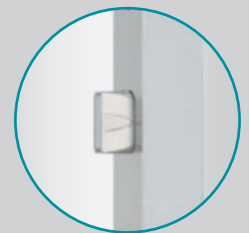
Automatic double latchbolt



Automatic double bolt



Massive bolt



Hook bolt



Double bolt



Roller locking cam



Mortise locks

according to DIN 18251



MORTISE LOCKS TO DIN 18251

There are 5 different classes of mortise locks to DIN 18251 **for 1-leaf timber and steel doors** and their dimensions are defined in the standard DIN 18251. These are interior door locks, project locks and heavy-duty locks.



GOOD TO KNOW

Always the right solution for many different applications – from the private interior door to the heavily frequented entrance door in administration or industrial building construction. The highly durable, low-maintenance BKS mortise locks to DIN 18251 are especially suited for a high frequency of use.

- Can be combined with the extensive range of accessories on the frame side for the GU-BKS door technology
- Lock case which is compatible with profile cylinders, Swiss round profile cylinders and with bathroom locks
- No freewheel cylinder required: Standard commercially-available profile cylinders and door hardware can be combined



Optional silent latch

Silent latches can be used as an option to prevent a loud and possibly disruptive noise when the door is shut.

The silent latch allows the door to close quietly.



PERFORMANCE FEATURES

- Backset from 55 mm
- Follower 8 mm or 9 mm
- Deadbolt (20 mm), 2-turn
- Hole distance 72 mm (PC) / 74 mm (CH-RC) / 78 mm (bathroom)

Mortise locks	For use in		Silent latch	PC	Bathroom	Monitoring contacts Latch/Deadbolt	Backset [mm]	Hole distance [mm]	Approval/Standards		
	1-leaf	2-leaf									Class
0215	✓	-	-	✓	✓	-	55	72	-	✓	1
0415	✓	-	-	✓	-	-	55	72	-	✓	2
B-0515	✓	-	Optional	✓	✓	✓	55-100	72, 74	-	✓	3
B-0615	✓	-	Optional	✓	✓	✓	55-100	72, 74	-	✓	5
B-0715	✓	-	-	✓	✓	✓	55-100	72, 74	-	✓	4
B-1206	✓	-	-	✓	-	✓	55-100	72, 74	✓	✓	5

Mortise locks

Series 13



MORTISE LOCKS SERIES 13

Extensive choice **for 1-leaf narrow-stile doors:** in addition to project locks of the 18 series, the standard 13 series contains dead-bolt and latch locks, fire-rated locks and/or escape door locks with panic function E. The compact lock case and reversible latch of the 13 series makes it not only ideal for installation in new doors, but also for retrofitting in existing doors. The repair faceplate with slot holes rounds off the 13 series.



GOOD TO KNOW

The BKS mortise locks for aluminium or PVC doors have been designed especially to meet the requirements of narrow stile doors: the slim and differently reinforced profiles demand locks with smaller backsets.

- Can be combined with the extensive range of accessories on the frame side for the GU-BKS door technology
- The lock case is compatible with profile cylinders, or Swiss round profile cylinders
- No freewheel cylinder required: Standard commercially-available profile cylinders and door hardware can be combined
- Reversible latch: the locks of series 13 are useable for both DIN left and DIN right
- The conical deadbolt with 20 mm deadbolt throw allows the door to be locked comfortably



Roller latch

Locks with roller latches are also suitable for double-action swing doors. The ideal position of the roller latch to catch the doors is adjusted by a screw accessible from the front of latch body.



PERFORMANCE FEATURES

- Backset from 25 mm
- Follower 8 mm or 9 mm
- Deadbolt (20 mm), 2-turn
- Hole distance 92 mm (PC) / 94 mm (CH-RC)

PANIC FUNCTIONS

- Panic function E

Series 13	For use in		Locking type			Monitoring contacts Deadbolt	Backset [mm]	Hole distance [mm]	Approval/Standards	
	1-leaf	2-leaf	Latch	Roller latch	Security deadbolt					
1300	✓	-	✓	-	-	-	25-45	92, 94	-	-
1305	✓	-	-	✓	-	-	25-45	-	-	-
1307	✓	-	✓	-	-	-	25-45	-	-	-
1308	✓	-	-	-	✓	-	25-45	-	-	-
1311	✓	-	✓	-	✓	Optional	25-45	92, 94	✓	✓
1314	✓	-	✓	-	✓	Optional	25-45	92, 94	-	✓
1315	✓	-	-	✓	✓	-	25-45	92, 94	-	-
1316	✓	-	✓	-	✓	Optional	25-45	92, 94	✓	✓

Mortise locks

Series 18



➔ [Click here to download the installation instructions, certificates and catalogues.](#)



MORTISE LOCKS SERIES 18

The wide-ranging 18 series **for one and two-leaf narrow-stile doors** offers many variants for securely locking a commercial/public building. The locks are available with different panic functions. The door can be shut quietly by installing a silent latch, which is also suitable for fire protection doors. In addition, a range of monitoring contacts for the deadbolt, latch, follower and cylinder locking cam are offered as a comprehensive solution.



GOOD TO KNOW

Make 1 out of 4 – and 4 out of 1

High degree of flexibility and low inventory costs: the BKS mortise locks of the 18 series are equipped with a reversible latch (DIN left/DIN right) and adjustable panic side (inwards/outwards).

- Can be combined with the extensive range of accessories on the frame side for the GU-BKS door technology
- The lock case is compatible with profile cylinders, or Swiss round profile cylinders
- No freewheel cylinder required: Standard commercially-available profile cylinders and door hardware can be combined
- The conical deadbolt with 20 mm deadbolt throw allows the door to be locked comfortably

Top-locking

The top-locking version allows doors of series 18 to be used for extra high doors.





PERFORMANCE FEATURES

- Backset from 25 mm
- Follower 9 mm
- Deadbolt, 1-turn (20 mm)
- Hole distance 92 mm (PC) / 94 mm (CH-RC)

PANIC FUNCTIONS

- Panic function E
- Panic function B
- Panic function D
- Panic function C

Series 18	For use in		with top-locking	with panic function on the higher-mounted interior lever handle	Silent latch	Monitoring contacts Latch/Deadbolt Lever handle/ Cylinder locking cam	Backset [mm]	Hole distance [mm]	Approval/Standards			
	1-leaf	2-leaf										
B-182x	<input checked="" type="checkbox"/>	<input checked="" type="checkbox"/>	-	-	Optional	Optional	25-65	92, 94	<input checked="" type="checkbox"/>	<input checked="" type="checkbox"/>	<input checked="" type="checkbox"/>	<input checked="" type="checkbox"/>
B-183x	<input checked="" type="checkbox"/>	<input checked="" type="checkbox"/>	<input checked="" type="checkbox"/>	-	Optional	Optional	35-65	92, 94	<input checked="" type="checkbox"/>	<input checked="" type="checkbox"/>	<input checked="" type="checkbox"/>	<input checked="" type="checkbox"/>
B-184x	<input checked="" type="checkbox"/>	<input checked="" type="checkbox"/>	-	<input checked="" type="checkbox"/>	Optional	Optional	35-65	92, 94	<input checked="" type="checkbox"/>	<input checked="" type="checkbox"/>	<input checked="" type="checkbox"/>	<input checked="" type="checkbox"/>

Mortise locks

Series 23



➔ [Click here to download the installation instructions, certificates and catalogues.](#)



MORTISE LOCKS SERIES 23

The wide-ranging 23 series **for one and two-leaf timber and steel doors** offers many variants for securely locking a commercial/public building. The locks are available with different panic functions. The top-locking version allows doors of series 23 to be used for extra high doors. In addition, a range of monitoring contacts for the deadbolt, latch, follower and cylinder locking cam are offered as a comprehensive solution.



GOOD TO KNOW

Make 1 out of 8 – and 8 out of 1

High degree of flexibility and low inventory costs: the BKS mortise locks of the 23 series are equipped with a reversible latch (DIN left/DIN right) and adjustable panic side (inwards/outwards). A top-locking mechanism can be adapted as an option.

- Can be combined with the extensive range of accessories on the frame side for the GU-BKS door technology
- The lock case is compatible with profile cylinders, or Swiss round profile cylinders
- No freewheel cylinder required: Standard commercially-available profile cylinders and door hardware can be combined
- The conical deadbolt with 20 mm deadbolt throw allows the door to be locked comfortably



Optional silent latch

As an option, the existing latch with series 23 can be replaced by a silent latch.

The silent latch allows the door to close quietly.



PERFORMANCE FEATURES

- Backset from 55 mm
- Follower 9 mm
- Deadbolt, 1-turn (20 mm)
- Hole distance 72 mm (PC) / 74 mm (CH-RC)

PANIC FUNCTIONS

- Panic function E
- Panic function B
- Panic function D
- Panic function C

Series 23	For use in		with top-locking	with panic function on the higher-mounted interior lever handle	Silent latch	Monitoring contacts Latch/Deadbolt Lever handle/ Cylinder locking cam	Backset [mm]	Hole distance [mm]	Approval/Standards			
	1-leaf	2-leaf										
B-232x	✓	✓	-	-	Optional	Optional	55-100	72, 74	✓	✓	✓	✓
B-233x	✓	✓	✓	-	Optional	Optional	55-100	72, 74	✓	✓	✓	✓
B-234x	✓	✓	-	✓	Optional	Optional	55-100	72, 74	✓	✓	✓	✓

Multi-point locks

GU SECURITY MR



GU SECURITY MR

Suitable for timber, PVC and metal door systems

A multi-point locking system with MR bolt is particularly effective, as it is very difficult to break open or tamper with using the usual burglary implements. It therefore offers outstanding security and ensures a reassuring sense of safety within your own four walls. The MR bolts are rugged metal bolts which are recessed into the door leaf with a single-piece long faceplate and connected by a lock mechanism. The number of locking points may vary depending on the model. The lock mechanism allows the door to be opened from the outside with a key or from the inside with a thumbturn or lever handle. The door is manually locked from the inside or outside with a key.



Fig.: GU SECURITY MR2

GOOD TO KNOW

Solidly locked! GU SECURITY MR

- Can be combined with the extensive range of GU SECURITY accessories: The lock geometry has been designed so that the frame side locking parts can be used in the same way as with the GU SECURITY Automatic with Automatic latchbolt
- The main lock case is prepared for profile cylinders or Swiss round profile cylinders and equipped with a latch (latch lever function) and a deadbolt (2-turn, 20 mm throw)
- No freewheel cylinder required: Standard commercially-available profile cylinders and door hardware can be combined
- Reversible latch: The multi-point locks are useable for both DIN left and DIN right

BENEFITS FOR USER

Comfortable: The encapsulated planetary gear in the lock case is lubricated for life, which makes it exceptionally smooth running.

Energy efficient: the conical design of the heavy-duty bolt ensures a perfect tight seal when locking the door helps make it highly thermally efficient.

Flexible: An optional safe-T-catch function which offers secure night ventilation. It is also possible to monitor whether or not the door is locked by using a MR bolt with "query function" instead of a standard MR bolt.



Secure: Successfully tested for use in burglar-inhibiting doors in the various security classes according to EN 1627. The massive bolt has a hardened steel insert. This protects it from being sawn through. The 20 mm projecting MR bolts are secured against being forced back.

GU SECURITY	For use in		Locking type	Safe-T-catch function	Monitoring contacts (e.g. MR bolt monitoring)	Backset [mm]	Hole distance [mm]	Approval/Standards			
	1-leaf	2-leaf									
MR2	✓	✓	Massive bolt	Optional	Optional	25-90	72-94	✓	✓	✓	✓
MR4	✓	✓	Massive bolt	-	-	33-80	72-94	✓	✓	✓	✓
MR/SZ-R	✓	✓	Massive bolt Roller locking cam	-	Optional	33-80	70-94	-	-	✓	✓

Multi-point locks

GU SECURITY SH



GU SECURITY SH

Suitable for timber, PVC and metal door systems

A multi-point locking system with SH bolt ensures the door is securely locked and, because the bolts hook into their counterparts on the frame side, also provides additional burglary protection. The advantage of distributing the locking points evenly round the door is that it reduces the force acting on the locking points to a minimum and enhances security. The multi-point locking system consists of a single-piece long faceplate with two or four SH bolts which move upwards and engage in the strikers in the door frame profile. This arrangement prevents the SH bolt from coming down on the striker if the door is lowered. The door is opened from the outside with a key or from the inside with a thumbturn or lever handle. The door is manually locked from the inside or outside with a key.



Fig.: GU SECURITY SH2

GOOD TO KNOW

Securely locked: GU SECURITY SH

- Can be combined with the extensive range of GU SECURITY accessories
- The main lock case is prepared for profile cylinders or Swiss round profile cylinders and equipped with a latch (latch lever function) and a deadbolt (2-turn, 20 mm throw)
- No freewheel cylinder required: Standard commercially-available profile cylinders and door hardware can be combined
- Reversible latch: The multi-point locks are useable for both DIN left and DIN right

BENEFITS FOR USER

Comfortable: The encapsulated planetary gear in the lock case is lubricated for life, which makes it exceptionally smooth running.

Energy efficient: the conical design of the SH bolt pulls the door tight against the frame when locking it which makes it extremely thermally efficient.

Flexible: An optional safe-T-catch function which offers secure night ventilation. It is also possible to monitor whether or not the door is locked by using a SH bolt with "query function" instead of a standard SH bolt.



Secure: Successfully tested for use in burglar-inhibiting doors in the various security classes according to EN 1627. The SH bolt has a hardened steel insert. This protects it from being sawn through. The 24 mm projecting SH bolts are secured against being forced back.

GU SECURITY	For use in		Locking type	Safe-T-catch function	Monitoring contacts (e.g. hook bolt monitoring)	Backset [mm]	Hole distance [mm]	Approval/Standards			
	1-leaf	2-leaf									
SH2	✓	✓	Hook bolt	Optional	Optional	33-80	72-94	✓	✓	✓	✓
SH4	✓	✓	Hook bolt	-	-	33-90	72-94	✓	✓	✓	✓

Multi-point locks

GU SECURITY DR



GU SECURITY DR

Suitable for timber, PVC and metal door systems

A multi-point locking system with double bolt combines all the benefits of the SH bolt and MR bolt systems. Rugged metal bolts prevent the door from being pushed or forced open, and swivel bolts effectively stop the door leaf from being jemmied out by hooking in behind the frame components. This combination mounted on a single-piece long face-plate provides outstanding burglary protection and is highly recommended for outside doors, apartment entrance doors or doors requiring a higher level of security. Similar to all manually locking locks of GU Group, with this multi-point locking system the door can also be opened from the outside with a key, or from the inside with a thumbturn or lever handle. It is locked manually from the inside or outside with the key.

GOOD TO KNOW

Double holds more securely: GU SECURITY DR

- Can be combined with the extensive range of GU SECURITY accessories: The lock geometry has been designed so that the frame side locking parts can be used in the same way as with the GU SECURITY Automatic4 with Automatic latchbolt
- The main lock case is prepared for profile cylinders or Swiss round profile cylinders and equipped with a latch (latch lever function) and a deadbolt (2-turn, 20 mm throw)
- No freewheel cylinder required: Standard commercially-available profile cylinders and door hardware can be combined
- Reversible latch: The multi-point locks are useable for both DIN left and DIN right

BENEFITS FOR USER

Comfortable: The encapsulated planetary gear in the lock case is lubricated for life, which makes it exceptionally smooth running.

Energy efficient: the conical design of the MR bolt and SH bolt ensures a perfect tight seal when locking the door which helps make it highly thermally efficient.

Flexible: An optional safe-T-catch function which offers secure night ventilation and can be activated from the inside via a rotary knob is available.





Secure: Successfully tested for use in burglar-inhibiting doors in the various security classes according to EN 1627. The MR bolt and the SH bolt have a hardened steel insert. This protects them from being sawn through. The MR bolt and SH bolt with 20 mm and 24 mm throw respectively are protected to prevent them from being forced back.

GU SECURITY	For use in		Locking type	Safe-T-catch function	Monitoring contacts	Backset [mm]	Hole distance [mm]	Approval/Standards			
	1-leaf	2-leaf									
DR	<input checked="" type="checkbox"/>	<input checked="" type="checkbox"/>	Double bolt	Optional	-	33-80	72-94	<input checked="" type="checkbox"/>	<input checked="" type="checkbox"/>	<input checked="" type="checkbox"/>	<input checked="" type="checkbox"/>

Multi-point locks

GU SECURITY SZ-R



GU SECURITY SZ-R

Suitable for timber, PVC and metal door systems

A multi-point locking system with locking cam is exceptionally smooth running and require very little maintenance. It has several locking points consisting of locking cams which roll into the corresponding strikers in the door frame when closing the door. This locking system is frequently used with secondary entrance doors and balcony doors. It can be integrated into the door inconspicuously and therefore has the advantage that it does not visually detract from the design. The door is unlocked from the outside and from the inside by turning a key. The door is opened on the inside via the lever handle, which retracts the latch in the main lock case and opens the door. The door is locked by turning the key through two revolutions.

GOOD TO KNOW

Tighter than tight: GU SECURITY SZ-R

- Can be combined with the extensive range of accessories from the window and door technology of the GU group
- The main lock case is prepared for profile cylinders or Swiss round profile cylinders and equipped with a latch (latch lever function) and a deadbolt (2-turn, 20 mm throw)
- No freewheel cylinder required: Standard commercially-available profile cylinders and door hardware can be combined
- Reversible latch: The multi-point locks are useable for both DIN left and DIN right

BENEFITS FOR USER

Comfortable: The encapsulated planetary gear in the lock case is lubricated for life, which makes it exceptionally smooth running.

Energy-efficient: With the locking cams being adjustable, optimised gasket pressure and door tightness are achieved in the top and bottom areas of the door.





GU SECURITY	For use in		Locking type	Safe-T-catch function	Monitoring contacts	Backset [mm]	Hole distance [mm]
	1-leaf	2-leaf					
SZ-R4	✓	✓	Roller locking cam	-	-	25-90	72-94

Multi-point locks

GU SECURITY EUROPA



GU SECURITY EUROPA

Suitable for timber, PVC and metal door systems

The GU SECURITY EUROPA series of multi-point locks is the perfect choice when a locking system with outside lever handle is required instead of a knob. It can be operated from both the inside and outside with the lever handle. Locking is done by turning the lever handle upward and not via the key. The multi-point locking elements pull the door leaf into the gasket. The lever handle then returns to the initial position which allows the door to be unlocked without a key simply by pressing down. This means that the door can be locked and unlocked with one hand movement.

GOOD TO KNOW

Lever-operated with GU SECURITY EUROPA

- Can be combined with the extensive range of GU SECURITY accessories
- The main lock case is prepared for profile cylinders or Swiss round profile cylinders and equipped with a latch (latch lever function) and a deadbolt (2-turn, 20 mm throw)
- No freewheel cylinder required: Standard commercially-available profile cylinders and door hardware can be combined
- Reversible latch: The multi-point locks are useable for both DIN left and DIN right

Fig.: GU SECURITY EUROPA SH2

BENEFITS FOR USER

Comfortable: the door can be locked and unlocked via the lever handle with one hand movement.

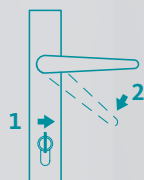
Secure: The MR bolt and SH bolt are tough customers: a hardened steel insert means they cannot be sawn through and they are secure against being forced back. Levering the door out is efficiently hampered as the SH bolts hook into the accessories on the frame side.

Energy-efficient: With the roller locking cams being adjustable, optimised gasket pressure and door tightness are achieved in the top and bottom areas of the door.

Functional principle

Opening

1. Unlock the multi-point lock using the key
2. Press down the lever handle to open the door



Closing

1. Lift the lever so the locking bolts can project
2. Lock the door using the key



The GU SECURY EUROPA multi-point locking system is a popular choice for house and apartment entrance doors, especially in Europe, and comes in many variants. Whether MR bolts, SH bolts, or roller locking cams are mounted on the one-piece long faceplate – there are many options to choose from.



Massive bolt



Hook bolt



Roller locking cam

Flexible: An optional safe-T-catch function which offers secure night ventilation and can be activated from the inside via a rotary knob is available.

GU SECURY EUROPA	For use in		Locking type	Safe-T-catch function	Monitoring contacts	Backset [mm]	Hole distance [mm]	Approval/Standards	
	1-leaf	2-leaf							
MR2	✓	✓	Massive bolt	–	Optional	30–55	72–92	✓	–
MR/SZ-R	✓	✓	Massive bolt Roller locking cam	–	Optional	30–55	92	–	–
SH2	✓	✓	Hook bolt	Optional	–	35–55	72–92	–	–
SH/SZ-R	✓	✓	Hook bolt Roller locking cam	–	–	28	92	–	✓
SZ-R4	✓	✓	Roller locking cam	Optional	–	25–55	72–94	–	✓

Mortise locks

Series 19



➔ [Click here to download the installation instructions, certificates and catalogues.](#)



MORTISE LOCKS SERIES 19

The locks of series 19 **for single- and double-leaf narrow stile doors** offer the highest level of security and functionality and, through their VdS approval, are particularly suitable for burglar-inhibiting doors. Moreover, their suitability for fire protection and escape route doors according to the European standards opens up completely new options when it comes to conceiving and designing lock systems.



Choice of variants

In addition to monitoring contacts for querying the individual lock elements, series 19 contains mechatronic products such as motor-driven locks and electrically-coupled locks.

- Can be combined with the extensive range of accessories on the frame side for the GU-BKS door technology
- The lock case is compatible with profile cylinders, or Swiss round profile cylinders
- No freewheel cylinder required: Standard commercially-available profile cylinders and door hardware can be combined
- Reversible latchbolt: The mortise locks of series 19 are useable for both DIN left and DIN right
- Switchable panic side (inward/outward)

Motor-driven locks: With the latchbolt being retracted via motor, the lock is especially suited for use in the context of access control and barrier-free construction, or in connection with a swing door drive. The motor-driven lock features built-in monitoring contacts, such as latchbolt or cylinder cam monitoring contact. Due to the standard-size lock case with the electronics inside, the motor-driven panic locks can be exchanged for all existing BKS series 18 or 19 locks (standard panic locks or the electrically coupled versions), or combined with these within the facility.

Electrically coupled locks: The exterior lever handle is engaged electrically, thus allowing for electrical access control. Activation is possible by means of door opener button, intercom, time switch, or via access control systems. The status of individual lock components can also be queried electrically through built-in contact switches. During a rescue operation by the fire brigade, for example, the door can be opened from outside by operating the mechanical profile cylinder.



PERFORMANCE FEATURES

- Automatic locking latchbolt: The door no longer needs to be locked manually
- Deadbolt projection 20 mm
- Backset from 35 mm
- Follower 9 mm
- Hole distance 92 mm (PC) / 94 mm (CH-RC)

PANIC FUNCTIONS

- Panic function E
- Panic function B
- Panic function C

Series 19	For use in		with top-locking	Electrically coupled	Motor-driven	Monitoring contacts Latch/Deadbolt Lever handle/ Cylinder locking cam	Backset [mm]	Hole distance [mm]	Approval/Standards				
	1-leaf	2-leaf											
B-190x	✓	✓	✓	-	-	Optional	35-65	92, 94	✓	✓	-	✓	✓
B-191x	✓	✓	-	-	-	Optional	35-65	92, 94	✓	✓	-	✓	✓
B-192x	✓	-	-	-	-	Optional	35-65	92, 94	✓	-	-	-	-
B-195x	✓	✓	-	-	✓	Optional	35-65	92, 94	✓	-	✓	✓	✓
B-197x	✓	✓	-	✓	-	Optional	35-65	92, 94	✓	-	✓	✓	✓
B-198x	✓	✓	✓	✓	-	Optional	35-65	92, 94	✓	-	✓	✓	✓

Mortise locks

Series 21



➔ [Click here to download the installation instructions, certificates and catalogues.](#)



MORTISE LOCKS SERIES 21

The locks of series 21 **for single- and double-leaf timber and steel doors** offer the highest level of security and functionality and, through their VdS approval, are particularly suitable for burglar-inhibiting doors. Moreover, their suitability for fire protection and escape route doors according to the European standards opens up completely new options when it comes to conceiving and designing lock systems.



Choice of variants

In addition to monitoring contacts for querying the individual lock elements, series 21 contains mechatronic products such as motor-driven locks and electrically-coupled locks.

- Can be combined with the extensive range of accessories on the frame side for the GU-BKS door technology
- The lock case is compatible with profile cylinders, or Swiss round profile cylinders
- No freewheel cylinder required: Standard commercially-available profile cylinders and door hardware can be combined
- Reversible latchbolt: The mortise locks of series 21 are useable for both DIN left and DIN right
- Switchable panic side (inward/outward)

Motor-driven locks: With the latchbolt being retracted via motor, the lock is especially suited for use in the context of access control and barrier-free construction, or in connection with a swing door drive. The motor-driven lock features built-in monitoring contacts, such as latchbolt or cylinder cam monitoring contact. Due to the standard-size lock case with the electronics inside, the motor-driven panic locks can be exchanged for all existing BKS series 23 or 21 locks (standard panic locks or the electrically coupled versions), or combined with these within the facility.

Electrically coupled locks: The exterior lever handle is engaged electrically, thus allowing for electrical access control. Activation is possible by means of door opener button, intercom, time switch, or via access control systems. The status of individual lock components can also be queried electrically through built-in contact switches. During a rescue operation by the fire brigade, for example, the door can be opened from outside by operating the mechanical profile cylinder.



PERFORMANCE FEATURES

- Automatic locking latchbolt: The door no longer needs to be locked manually
- Deadbolt projection 20 mm
- With locks B-2166, B-2168: 20 mm deadbolt, 1-turn
- Backset from 55 mm
- Follower 9 mm
- Hole distance 72 mm (PC) / 74 mm (CH-RC)

PANIC FUNCTIONS

- Panic function E
- Panic function B
- Panic function C

Series 21	For use in		with top-locking	Electrically coupled	Motor-driven	Monitoring contacts Latch/Deadbolt Lever handle/ Cylinder locking cam	Backset [mm]	Hole distance [mm]	Approval/Standards				
	1-leaf	2-leaf											
B-210x	✓	✓	✓	-	-	Optional	55-100	72, 74	✓	✓	-	✓	✓
B-211x	✓	✓	-	-	-	Optional	55-100	72, 74	✓	✓	-	✓	✓
B-212x	✓	-	-	-	-	Optional	55-100	72, 74	✓	-	-	-	-
B-215x	✓	✓	-	-	✓	Optional	55-100	72, 74	✓	-	✓	✓	✓
B-217x	✓	✓	-	✓	-	Optional	55-100	72, 74	✓	-	✓	✓	✓
B-218x	✓	✓	✓	✓	-	Optional	55-100	72, 74	✓	-	✓	✓	✓

Multi-point locks

SECURY 19



➔ [Click here to download the installation instructions, certificates and catalogues.](#)



SECURY 19

The SECURY 19 multi-point locks round of the product range **for single- and double-leaf narrow stile doors**.

The exterior lever handle of electrically coupled locks is engaged electrically, thus allowing for electrical access control. Activation is possible by means of door opener button, intercom, time switch, or via access control systems. The status of individual lock components can also be queried electrically through built-in contact switches. During a rescue operation by the fire brigade, for example, the door can be opened from outside by operating the mechanical profile cylinder.

The **EVP electrically-locking panic lock** is used in connection with an integrated electric escape door strike. The electric locking point is located optimally in the lock area. This compact solution involves a reduced number of system components, which facilitates both project planning and door fabrication for rescue route technology.

In addition to monitoring contacts for querying the individual lock elements, the SECURY 19 series contains mechatronic solutions for access control (electrically coupled multi-point locks) and for rescue route technology (electrically-locking panic lock EVP).

- Can be combined with the extensive range of GU SECURY accessories: The lock geometry has been designed so that the frame side locking parts can be used in the same way as with the GU SECURY MR system
- The main lock case is prepared for profile cylinders or Swiss round profile cylinders
- No freewheel cylinder required: Standard commercially-available profile cylinders and door hardware can be combined
- Reversible latch and Automatic latchbolt: The multi-point locks are useable for both DIN left and DIN right
- Switchable panic side (inward/outward)

GOOD TO KNOW



Optional with A-opener

By installing the optional A-opener, the latchbolts can be retracted via a motor. This is effected (for example) via an intercom or access control system.



SECURITY 19



SECURITY 19 ADR

The two variants with additional latchbolt or additional latchbolt with SH bolt (ADR) offer unparalleled security for burglar-inhibiting doors, also for fire protection and escape doors made to European standards.

PANIC FUNCTIONS

- Panic function E
- Panic function B
- Panic function C

Series 19	For use in		Locking type	Daytime release function	Monitoring contacts (e. g. latchbolt monitoring)	Backset [mm]	Hole distance [mm]	Approval/Standards						
	1-leaf	2-leaf												
SECURITY 19	<input checked="" type="checkbox"/>	<input checked="" type="checkbox"/>	Automatic latchbolt	Optional	Optional	35-80	92, 94	<input checked="" type="checkbox"/>	<input checked="" type="checkbox"/>	<input checked="" type="checkbox"/>	<input checked="" type="checkbox"/>	<input checked="" type="checkbox"/>	<input checked="" type="checkbox"/>	<input checked="" type="checkbox"/>
SECURITY 19 ADR	<input checked="" type="checkbox"/>	<input checked="" type="checkbox"/>	Automatic double latchbolt	Optional	Optional	35-80	92, 94	<input checked="" type="checkbox"/>	<input checked="" type="checkbox"/>	<input checked="" type="checkbox"/>	<input checked="" type="checkbox"/>	<input checked="" type="checkbox"/>	<input checked="" type="checkbox"/>	<input checked="" type="checkbox"/>

Multi-point locks

SECURY 21



➔ [Click here to download the installation instructions, certificates and catalogues.](#)



SECURY 21

The SECURY 21 multi-point locks round of the product range for **single- and double-leaf timber and steel doors**.

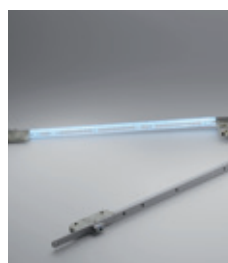
The exterior lever handle of **electrically coupled locks** is engaged electrically, thus allowing for electrical access control. Activation is possible by means of door opener button, intercom, time switch, or via access control systems. The status of individual lock components can also be queried electrically through built-in contact switches. During a rescue operation by the fire brigade, for example, the door can be opened from outside by operating the mechanical profile cylinder.

The **EVP electrically-locking panic lock** is used in connection with an integrated electric escape door strike. The electric locking point is located optimally in the lock area. This compact solution involves a reduced number of system components, which facilitates both project planning and door fabrication for rescue route technology.

In addition to monitoring contacts for querying the individual lock elements, the SECURY 21 series contains mechatronic solutions for access control (electrically coupled multi-point locks) and for rescue route technology (electrically-locking panic lock EVP).

- Can be combined with the extensive range of GU SECURY accessories: The lock geometry has been designed so that the frame side locking parts can be used in the same way as with the GU SECURY MR system
- The main lock case is prepared for profile cylinders or Swiss round profile cylinders
- No freewheel cylinder required: Standard commercially-available profile cylinders and door hardware can be combined
- Reversible latch and Automatic latchbolt: The multi-point locks are useable for both DIN left and DIN right
- Switchable panic side (inward/outward)
- Optional with A-opener

GOOD TO KNOW



Optional with connecting rod protection

Exclusively
only at
Gretsch-Unitas

The optional connecting rod protection is an additional security function which protects the connecting rod from forcible damage and therefore ensures that the locking system remains functional.



SECURITY 21



SECURITY 21 ADR

The two variants with additional latchbolt or additional latchbolt with SH bolt (ADR) offer unparalleled security for burglar-inhibiting doors, also for fire protection and escape doors made to European standards.

PANIC FUNCTIONS

- Panic function E
- Panic function B
- Panic function C

Series 21	For use in		Locking type	Daytime release function	Monitoring contacts (e. g. latchbolt monitoring)	Backset [mm]	Hole distance [mm]	Approval/Standards						
	1-leaf	2-leaf												
SECURITY 21	<input checked="" type="checkbox"/>	<input checked="" type="checkbox"/>	Automatic latchbolt	Optional	Optional	55-100	72, 74	<input checked="" type="checkbox"/>	<input checked="" type="checkbox"/>	<input checked="" type="checkbox"/>	<input checked="" type="checkbox"/>	<input checked="" type="checkbox"/>	<input checked="" type="checkbox"/>	<input checked="" type="checkbox"/>
SECURITY 21 ADR	<input checked="" type="checkbox"/>	<input checked="" type="checkbox"/>	Automatic double latchbolt	Optional	Optional	55-100	72, 74	<input checked="" type="checkbox"/>	<input checked="" type="checkbox"/>	<input checked="" type="checkbox"/>	<input checked="" type="checkbox"/>	<input checked="" type="checkbox"/>	<input checked="" type="checkbox"/>	<input checked="" type="checkbox"/>

Multi-point locks

GU SECURITY Automatic and Automatic3



GU SECURITY Automatic and Automatic3

Suitable for timber, PVC and metal door systems

The multi-point locking system with Automatic latchbolt provides additional protection against burglaries, as it is more difficult to tamper with or bypass than conventional single-point locking systems. It is an effective way to make doors more secure and minimises the risk of burglaries. With an automatically-locking multi-point locking system, the locking points lock automatically as soon as the door is closed without operating an additional key or bolt. This provides greater protection against unauthorised access or burglary, as the lock is properly secured and does not remain unlocked due to carelessness or forgetfulness. The number of locking points may vary depending on the model. A multi-point lock with Automatic latchbolt is often used in private detached houses, apartments or offices.

GOOD TO KNOW

Insured with the door just pulled shut: GU SECURITY Automatic

- Can be combined with the extensive range of GU SECURITY accessories: The lock geometry has been designed so that the frame side locking parts can be used in the same way as with the GU SECURITY MR system
- The main lock case is prepared for profile cylinders or Swiss round profile cylinders and equipped with a latch (latch lever function) and a deadbolt (1-turn, 20 mm throw)
- No freewheel cylinder required: Standard commercially-available profile cylinders and door hardware can be combined
- Reversible latch and Automatic latchbolt: The multi-point locks are useable for both DIN left and DIN right

Fig.: GU SECURITY Automatic

BENEFITS FOR USER

Comfortable: The Automatic latchbolts automatically throw 20 mm when the door is pulled shut, securely locking the door. Once pulled shut, the door must be unlocked to open it from the outside by turning the key. The door can be opened from the inside by operating the lever handle. The self-locking GU SECURITY Automatic multi-point locks can be equipped with an optional opening motor [SECURITY A-opener](#) (↔ page 62) or [SECURITY A-opener servo](#) (↔ page 63).

Energy efficient: The automatic locking system prevents the door from warping and ensures the door is sealed tightly.



Recognised and approved by the German Association of Non-Life Insurers (VdS) according to individual damage prevention directives **VdS class A**

Secure: Successfully tested for use in burglar-inhibiting doors in the various security classes according to EN 1627. The 20 mm projecting Automatic latchbolt is secured against being forced back. An additional locking with the key is only required if the lever handle needs to be blocked from the inside, i.e. when used as a childproof safety device.

Flexible: the optional door gap security device (↔ page 52) ensures a secure gap opening. With the optional daytime release function (↔ page 54), the automatic locking can be disabled manually. The automatic additional locks remain retracted and the door can be permanently accessed.

GU SECURITY	For use in		Locking type	Safe-T-catch function	Monitoring contacts (e. g. latchbolt monitoring)	Backset [mm]	Hole distance [mm]	Approval/Standards			
	1-leaf	2-leaf									
Automatic	✓	✓	Automatic latchbolt	Optional	Optional	33–80	70–94	✓	✓	✓	✓
Automatic3	✓	✓	Automatic latchbolt	Optional	Optional	35–80	70–94	✓	✓	✓	✓

Multi-point locks

GU SECURITY Automatic4 and Automatic6



GU SECURITY Automatic4 and Automatic6

Suitable for timber, PVC and metal door systems

The multi-point lock with Automatic double latchbolt is a particularly stable self-locking locking system. Two Automatic latchbolts per locking point are automatically triggered when the door is pulled shut and brought into the locking position when the door is shut. The door is locked automatically so it cannot be inadvertently left unlocked. The number of locking points may vary depending on the model. A multi-point locking system with Automatic double latchbolt is often used in commercial buildings, industrial units or public facilities with more stringent security requirements. However, it is also used in private homes to provide additional protection against burglaries.

GOOD TO KNOW

Insured with the door just pulled shut: GU SECURITY Automatic

- Can be combined with the extensive range of GU SECURITY accessories: The lock geometry has been designed so that the frame side locking parts can be used in the same way as with the GU SECURITY DR system
- The main lock case is prepared for profile cylinders or Swiss round profile cylinders and equipped with a latch (latch lever function) and a deadbolt (1-turn, 20 mm throw)
- No freewheel cylinder required: Standard commercially-available profile cylinders and door hardware can be combined
- Reversible latch and Automatic latchbolt: The multi-point locks are useable for both DIN left and DIN right



Fig.: GU SECURITY Automatic4

BENEFITS FOR USER

Comfortable: The Automatic latchbolts automatically throw 20 mm when the door is pulled shut, securely locking the door. Once pulled shut, the door must be unlocked to open it from the outside by turning the key. The door can be opened from the inside by operating the lever handle. The self-locking GU SECURITY Automatic multi-point locks can be equipped with an optional opening motor [SECURITY A-opener](#) (↔ page 62) or [SECURITY A-opener servo](#) (↔ page 63).

Energy efficient: The automatic locking system prevents the door from warping and ensures the door is sealed tightly.



Recognised and approved by the German Association of Non-Life Insurers (VdS) according to individual damage prevention directives **VdS class B**

Secure: Successfully tested for use in burglar-inhibiting doors in the various security classes according to EN 1627. The 20 mm projecting Automatic latchbolt is secured against being forced back. An additional locking with the key is only required if the lever handle needs to be blocked from the inside, i.e. when used as a childproof safety device.

Flexible: the optional door gap security device (↔ page 52) ensures a secure gap opening. With the optional daytime release function (↔ page 54), the automatic locking can be disabled manually. The automatic additional locks remain retracted and the door can be permanently accessed.

GU SECURITY	For use in		Locking type	Safe-T-catch function	Monitoring contacts (e. g. latchbolt monitoring)	Backset [mm]	Hole distance [mm]	Approval/Standards			
	1-leaf	2-leaf									
Automatic4	✓	✓	Automatic double latchbolt	Optional	Optional	33–80	70–94	✓	✓	✓	✓
Automatic6	✓	✓	Automatic double latchbolt	Optional	Optional	35–80	70–94	✓	✓	✓	✓

Multi-point locks

GU SECURITY Automatic-DR (ADR)



GU SECURITY Automatic-DR (ADR)

Suitable for timber, PVC and metal door systems

The multi-point lock with Automatic double bolt locking type combines an Automatic latchbolt with hook bolts. When the door is pulled shut, the Automatic latchbolts are immediately triggered automatically and activate the hook bolts mechanically. The additional hook bolts engage in the frame parts and move into the top of the frame, which prevents would-be burglars from levering out the door and also guarantees outstanding functional reliability when lowering the door. Double locking, higher operating comfort due to effortless and reliable automatic self-locking, and certified security: this locking system offers premium quality from the inventor of multi-point locking systems and is recommended for doors providing access to particularly sensitive areas or hazardous locations.

GOOD TO KNOW

Doubly secure: GU SECURITY Automatic-DR (ADR)

- Can be combined with the extensive range of GU SECURITY accessories: The lock geometry has been designed so that the frame side locking parts can be used in the same way as with the GU SECURITY DR system
- The main lock case is prepared for profile cylinders or Swiss round profile cylinders and equipped with a latch (latch lever function) and a deadbolt (1-turn, 20 mm throw)
- No freewheel cylinder required: Standard commercially-available profile cylinders and door hardware can be combined
- Reversible latch and Automatic latchbolt: The multi-point locks are useable for both DIN left and DIN right

BENEFITS FOR USER

Comfortable: The Automatic latchbolts automatically throw 20 mm when the door is pulled shut, securely locking the door. Once pulled shut, the door must be unlocked to open it from the outside by turning the key. The door can be opened from the inside by operating the lever handle. The self-locking GU SECURITY Automatic multi-point locks can be equipped with an optional opening motor [SECURITY A-opener](#) (↔ page 62) or [SECURITY A-opener servo](#) (↔ page 63).

Energy efficient: The automatic locking system prevents the door from warping and ensures the door is sealed tightly.



THE ORIGINAL BY THE INVENTOR



+
DOUBLY SECURE
+

RC4

The door locking system satisfies the requirements of resistance class RC4

VdS
★★★

Recognised and approved by the German Association of Non-Life Insurers (VdS) according to individual damage prevention directives **VdS class C**

Secure: Successfully tested for use in burglar-inhibiting doors in the various security classes according to EN 1627. The Automatic latchbolt and the hook bolts are secured against being forced back. An additional locking with the key is only required if the lever handle needs to be blocked from the inside, i.e. when used as a child-proof safety device.

Flexible: the optional door gap security device (↔ page 52) ensures a secure gap opening. With the optional daytime release function (↔ page 54), the automatic locking can be disabled manually. The automatic additional locks remain retracted and the door can be permanently accessed.

GU SECURITY	For use in		Locking type	Safe-T-catch function	Monitoring contacts	Backset [mm]	Hole distance [mm]	Approval/Standards			
	1-leaf	2-leaf									
Automatic-DR	✓	✓	Automatic double bolt	Optional	-	33-80	70-94	✓	✓	✓	✓

Multi-point locks

GU SECURITY Automatic3 TEOR



➔ Find out more at
www.tagesentriegelung.de



GU SECURITY Automatic3 TEOR

Suitable for timber, PVC and metal door systems

The GU SECURITY Automatic3 TEOR self-locking multi-point lock of the Gretsch-Unitas group offers highest degree of burglar inhibition but on the other hand also provides building occupants with a safe escape route in emergencies: The house entrance door is locked from the outside but can also be opened from the inside at any time without a key. For greater comfort, the key owner can activate the daytime release by operating the key and lever handle so the door can be accessed from the outside without a key. This type of multi-point locking system is used in house entrance doors from private detached houses and multiple family dwellings, if they do not have to satisfy the requirements of an emergency exit lock to EN 179 or an escape door lock to EN 1125.

GOOD TO KNOW

Harmonious co-existence of burglar inhibition and safe escape: GU SECURITY Automatic3 TEOR

- When combined with a striker including interchangeable latch piece (variant without mechanical unlocking lever), incorrect positioning on the frame side is not possible. With the daytime release function activated, the door is held shut by the latch thanks to the spring loaded interchangeable latch piece.
- The main lock case is prepared for profile cylinders or Swiss round profile cylinders and equipped with a latch (latch lever function).
- No freewheel cylinder required: Standard commercially-available profile cylinders and door hardware can be combined
- Reversible latch and Automatic latchbolt: The multi-point locks are useable for both DIN left and DIN right

BENEFITS FOR USER

Comfortable: The Automatic latchbolts automatically throw 20 mm when the door is pulled shut, securely locking the door. Once pulled shut, the door must be unlocked to open it from the outside by turning the key. The door can be opened from the inside by operating the lever handle. The self-locking GU SECURITY Automatic multi-point locks can be equipped with an optional opening motor **SECURITY A-opener** (➔ page 62) or **SECURITY A-opener servo** (➔ page 63).

Energy efficient: The automatic locking system prevents the door from warping and ensures the door is sealed tightly.





Secure: according to decision by the Frankfurt regional court (2015) a locked house entrance door obstructs the escape route and could prevent persons escaping safely in the event of an emergency. House entrance doors in multi-family houses must therefore not be locked. With the GU SECURY Automatic3 TEOR multi-point lock, the door can be opened in the escape direction at any time – even without a key.

Flexible: With the daytime release function the automatic locking can be disabled manually. The automatic additional locks remain retracted and the door can be permanently accessed. Can be integrated into the access control systems due to compatibility with the BKS electronic components, e.g. transponder, door code keypad, finger scanner, card reader.

GU SECURY	For use in		Locking type	Safe-T-catch function	Monitoring contacts (e. g. latchbolt monitoring)	Backset [mm]	Hole distance [mm]	Approval/Standards			
	1-leaf	2-leaf									
Automatic3 TEOR	✓	✓*	Automatic latchbolt	-	Optional	35-80	70-94	✓	✓	✓	✓

* on request

Multi-point locks

GU SECURY Automatic Panic E and Automatic-DR Panic E



GU SECURY Automatic Panic E GU SECURY Automatic-DR Panic E

Suitable for timber, PVC and metal door systems

The technical features of modern door systems reflect the increasing demands in project construction. The multi-point locks with Automatic latchbolt or Automatic DR bolt are supplemented by the variants with panic function. When combined with the panic function E, they can be used as a self-actuating locking system in emergency exit doors or escape doors. With the GU SECURY Automatic Panic E and GU SECURY Automatic-DR Panic E systems, escape from the inside is guaranteed at all times, even without a key, through operation of the lever handle or touch bar. This type of multi-point lock is used in doors of commercial/public building projects and entrance doors of shops or offices.



Fig.: GU SECURY Automatic Panic E

GOOD TO KNOW

No panic: GU SECURY Automatic/Automatic-DR Panic E

- Can be combined with the extensive range of accessories on the frame side for the GU-BKS door technology
- The main lock case is prepared for profile cylinders or Swiss round profile cylinders and equipped with a latch (latch lever function).
- No freewheel cylinder required: Standard commercially-available profile cylinders and door hardware can be combined
- Reversible latch and Automatic latchbolt: The multi-point locks are useable for both DIN left and DIN right

BENEFITS FOR USER

Comfortable: The Automatic latchbolts automatically throw 20 mm when the door is pulled shut, securely locking the door. Once pulled shut, the door must be unlocked to open it from the outside by turning the key. The door can be opened from the inside by operating the lever handle. The self-locking GU SECURY Automatic multi-point locks can be equipped with an optional opening motor [SECURY A opener](#) (↔ Seite 62).

Energy efficient: The automatic locking system prevents the door from warping and ensures the door is sealed tightly.



RC4

The GU SECURY Automatic-DR Panic E door locking system satisfies the requirements for resistance class RC4

EN
179

EN
1125

Approved for use on doors in escape and rescue routes
Panic function E

Secure: the GU SECURY Automatic Panic E and GU SECURY Automatic-DR Panic E multi-point locks are used in emergency exits to EN 179, escape doors to EN 1125 or as a locking system in fire-resistant doors to EN 1634. The door can be opened in the escape direction at any time – even without a key

Flexible: Can be integrated into the access control systems due to compatibility with the BKS electronic components, e.g. transponder, door code keypad, finger scanner, card reader.

GU SECURY	For use in		Locking type	Monitoring contacts (e. g. latchbolt monitoring)	Backset [mm]	Hole distance [mm]	Approval/Standards					
	1-leaf	2-leaf										
Automatic panic E	✓	-	Automatic latchbolt	Optional	33-80	72-94	✓	-	✓	✓	✓	-
Automatic-DR Panic E	✓	-	Automatic double bolt	-	33-80	72-94	✓	-	✓	✓	✓	✓

Multi-point locks

GU SECURITY Automatic Panic E ZSS



GU SECURITY Automatic Panic E ZSS

Suitable for timber door systems

The GU multi-point locks with connecting rod protection were developed in response to the more exacting requirements in relation to burglar resistance. The connecting rod protection is an additional component which protects the connecting rod from forcible damage and therefore ensures that the locking system remains functional. The requirements apply to unlocked doors in particular, especially door systems in escape and rescue routes which are not locked. The GU SECURITY Automatic Panic E ZSS multi-point locks are approved for use in 1-leaf panic doors and are suitable for use in doors in exposed locations, or which are installed in high-security areas, e.g. museums or exclusive retail outlets.

GOOD TO KNOW

For extra peace of mind: GU SECURITY Automatic Panic E ZSS

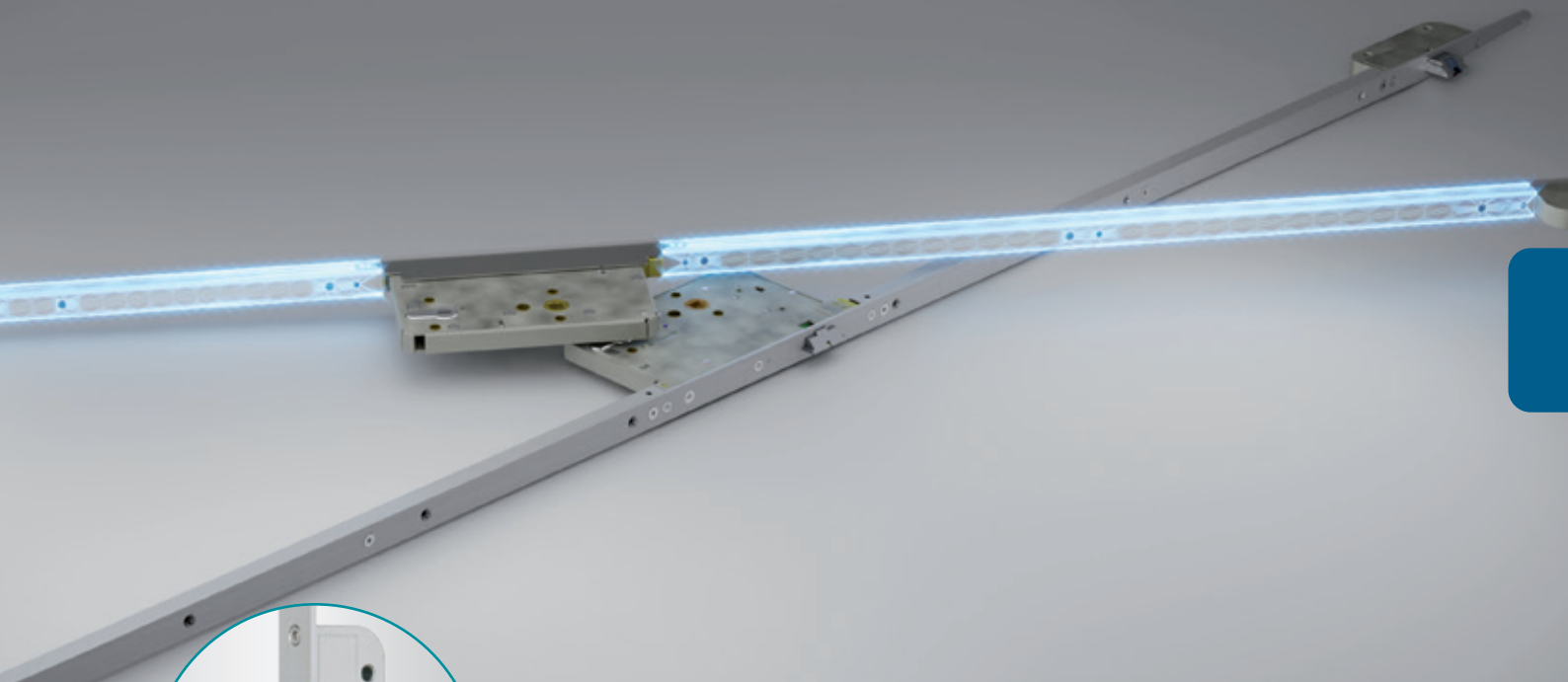
- Can be combined with the extensive range of accessories on the frame side for the GU-BKS door technology
- The main lock case is prepared for profile cylinders and equipped with a latch (latch lever function).
- No freewheel cylinder required: Standard commercially-available profile cylinders and door hardware can be combined
- The door locks can be ordered as DIN left or DIN right, depending on the DIN direction of the door

BENEFITS FOR USER

Comfortable: The Automatic latchbolts automatically throw 20 mm when the door is pulled shut, securely locking the door. The variants with pre-assembled opening motor (SECURY A-opener) offer a high degree of operating comfort in terms of barrier freedom.

Energy efficient: The automatic locking system prevents the door from warping and ensures the door is sealed tightly.

Exclusively
only at
Gretsch-Unitas



RC2 **RC3**

The door locking system satisfies the requirements of resistance classes RC2 and RC3

EN 179 **EN 1125**

Approved for use on doors in escape and rescue routes
Panic function E

Secure: the GU SECURITY Automatic Panic E ZSS multi-point locks are used in emergency exits to EN 179, escape doors to EN 1125 or as a locking system in fire-resistant doors to EN 1634. The door can be opened in the escape direction at any time – even without a key

Flexible: Can be integrated into the access control systems due to compatibility with the BKS electronic components, e.g. transponder, door code keypad, finger scanner, card reader.

GU SECURITY	For use in		Locking type	Monitoring contacts	Backset [mm]	Hole distance [mm]	Approval/Standards						
	1-leaf	2-leaf						DIN 18251-3	EN prEN 15685	DIN 18040	EN 179	EN 1125	EN 1627-1630
Automatic Panic E ZSS	✓	-	Automatic latchbolt	-	65-80	92	✓	-	-	✓	✓	✓	✓

Multi-point locks

SECURY ePOWER Panic



➔ The motor-driven multi-point lock with panic function
Find out more!



SECURY ePOWER Panic

Suitable for timber and metal door systems

Expectations in relation to doors have increased. They need to be secure, comfortable, versatile and durable. It should also be possible to incorporate them into an access control system and in escape and rescue routes. They should be barrier-free and tight. SECURY ePOWER Panic – the motor-driven multi-point lock by Gretsch-Unitas – satisfies all these requirements. The multi-point lock with three hook bolts opens, closes and locks the door via motor. The door can therefore always be conveniently locked and unlocked while the mechanism ensures the door system remains extremely secure. The door can be opened from the outside via access control systems, and also of course manually with a key. The main area of application is entrance doors in public buildings where doors need to be safely locked at night but must also handle a high volume of pedestrian traffic during the day.

GOOD TO KNOW

The motor-driven multi-point lock with panic function: SECURY ePOWER Panic

- The door is opened, closed and locked by motor, this a convenient barrier-free solution.
- Suitable for use in door systems that satisfy resistance class RC2 and RC3
- SECURY ePOWER Panic is available with various panic functions and can be easily integrated into access control systems
- A changeover to daytime release is possible for doors heavily frequented by the public
- Extremely durable: endurance-tested with more than 200,000 actuation cycles

BENEFITS FOR USER

Comfortable: The door is unlocked and locked again by the multi-point lock as if by magic. All of this is motor-driven and only takes seconds. As soon as the door falls shut, the SECURY ePOWER Panic multi-point lock locks the door by motor; unlocking is done using modern access control systems. The "daytime release" option allows convenient access to authorised persons.

Energy efficient: the conical design of the SH bolt pulls the door tight against the frame when locking it which makes it extremely thermally efficient.





DIN
18040

Ideally suited for use within the context of “barrier-free construction” in accordance with DIN 18040

RC2 **RC3**

The door locking system satisfies the requirements of resistance classes RC2 and RC3

EN
179 **EN**
1125

Approved for use on doors in escape and rescue routes

Secure: Three hook bolts provide high burglar inhibition. For frequently used doors, daytime release is possible as standard. In addition to the daytime release function, we offer the option of a controlled daytime release.

Flexible: The SECURITY ePOWER Panic is compatible with all BKS access control systems and is suitable for door automation with GU Automatic swing-door drives.

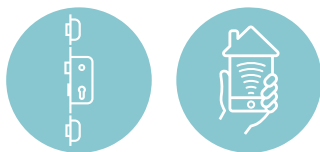
SECURITY	For use in		Locking type	Monitoring contacts (e.g. striker with deadbolt monitoring contact)	Backset [mm]	Hole distance [mm]	Approval/Standards						
	1-leaf	2-leaf											
ePOWER PE1 (outward opening)	✓	-	Hook bolts	Optional	35-80	72-94	✓	✓	-	✓	✓	✓	✓
ePOWER PT1 (outward opening)	✓	-	Hook bolts	Optional	35-80	72-94	✓	✓	-	✓	✓	✓	✓
ePOWER NT1 (inward opening)	✓	-	Hook bolts	Optional	35-80	72-94	✓	✓	-	✓	✓	-	✓

Multi-point locks

SECURY ePOWER Home



➔ The motor-driven multi-point lock for the private sector
Find out more!



SECURY ePOWER Home

Suitable for timber, PVC and metal door systems

With the product variant SECURY ePOWER Home the SECURY ePOWER multi-point locks program has been enhanced for use in the private sector. The locking system ensures effortless and reliable locking and unlocking. The hook bolts rotate after the door is pulled tight, engage with the frame part and lock by motor. When the lever handle is operated to open the door, all locking elements are retracted once again from inside. The lever handle can be locked by turning a key through a function integrated in the lock case. This function is deactivated alternatively by turning a key or via an electronic signal to open. The door system is now freely accessible from the inside. SECURY ePOWER Home is compatible with the BKS access control systems. After all, the demands in relation to burglar inhibition, barrier freedom and energy efficiency are increasing and the technical features of modern house and apartment entrance doors reflect this.

GOOD TO KNOW

Security and comfort for your home: SECURY ePOWER Home

- The door is opened, closed and locked by motor, this a convenient barrier-free solution.
- Suitable for use in door systems that satisfy resistance class RC2 and RC3
- Exceptionally low operating forces: predestined for use in barrier-free construction according to DIN 18040
- A changeover to daytime release is possible for doors heavily frequented by the public
- Extremely durable: endurance-tested with more than 200,000 actuation cycles

BENEFITS FOR USER

Comfortable: The door is unlocked and locked again by the multi-point lock as if by magic. All of this is motor-driven and only takes seconds. As soon as the door falls shut, the SECURY ePOWER Home multi-point lock locks the door by motor; unlocking is done manually or using modern access control systems.

Energy efficient: the conical design of the SH bolt pulls the door tight against the frame when locking it which makes it extremely thermally efficient.





DIN
18040

Ideally suited for use within the context of “barrier-free construction” in accordance with DIN 18040

RC2 **RC3**

The door locking system satisfies the requirements of resistance classes RC2 and RC3

Secure: Three hook bolts provide high burglar inhibition. They move into the top of the frame, which prevents would-be burglars from levering out the door, and also guarantees outstanding functional reliability when lowering the door. The locking elements are secured against being forced back. An additional locking with the key is only required if the lever handle needs to be locked from the inside, i.e. when used as a childproof safety device.

Flexible: The SECURITY ePOWER Home is compatible with all BKS access control systems and is suitable for door automation with GU Automatic swing-door drives.

SECURITY	For use in		Locking type	Monitoring contacts (e.g. striker with deadbolt monitoring contact)	Backset [mm]	Hole distance [mm]	Approval/Standards						
	1-leaf	2-leaf											
ePOWER Home (inward opening)	✓	-	Hook bolts	Optional	35-80	72-94	-	-	-	✓	-	-	✓

Multi-point locks

GU SECURITY FH



➔ [Click here to download the installation instructions, certificates and installation drawings.](#)



GU SECURITY FH

Suitable for timber, PVC and metal door systems

The GU SECURITY FH self-locking or manually-locking multi-point locks are suitable for use in single-leaf fire and smoke control doors. They are generally used to satisfy more exacting fire protection requirements or special fire regulations, e.g. in public buildings, hotels, hospitals or industrial facilities. They can also be used in private households to improve fire protection. Multi-point locks with fire-resistant characteristics are designed to make rooms or buildings difficult to access in the event of fire. They therefore prevent fire and smoke propagation. They satisfy specific security standards, are heat resistant and difficult to bypass.

GOOD TO KNOW

Fire and smoke protection: GU SECURITY FH

- With approval by the building control authority: Comes in all standard hole distances, backsets and lock faceplate versions
- The main lock case is prepared for profile cylinders or Swiss round profile cylinders
- Reversible latches and locking elements: The multi-point locks are useable for both DIN left and DIN right
- Reduced or delayed combustion: the door handle spindle is made of fire-resistant metal, and the lock faceplate is made of stainless steel
- Optionally with SECURITY additional latchbolt FH: it is specially designed for use on fire protection doors, hold shut by more than the main lock in the event of a fire (e.g. very high doors).

Illustrative example: GU SECURITY Automatic FH

BENEFITS FOR USER

Energy-efficient:

Manually actuated locking systems: the conical design of the MR bolt or SH bolt ensures a perfect tight seal when locking the door which makes it highly thermally efficient.

Self-locking locking systems: The automatic locking system prevents the door from warping and ensures the door is sealed tightly.



DIN
18251

DIN
4102

EN
1191

EN
1634

Secure: the advantage of multi-point locking with fire-resistant characteristics is that it provides added safety in the event of fire. The multi-point locking system prevents smoke and flames entering the room, which gives its occupants valuable time to escape or alert the fire brigade. The GU SECURY locking systems also provide greater protection against attempted burglaries. The multi-point lock makes sure that doors are more difficult to break open and therefore puts off would-be intruders.

The multi-point locks were tested to DIN 18251-3, DIN 4102-18 and EN 1191 and satisfy the requirements both within the meaning of these standards and also in relation to fire protection, smoke protection, durability and strength.

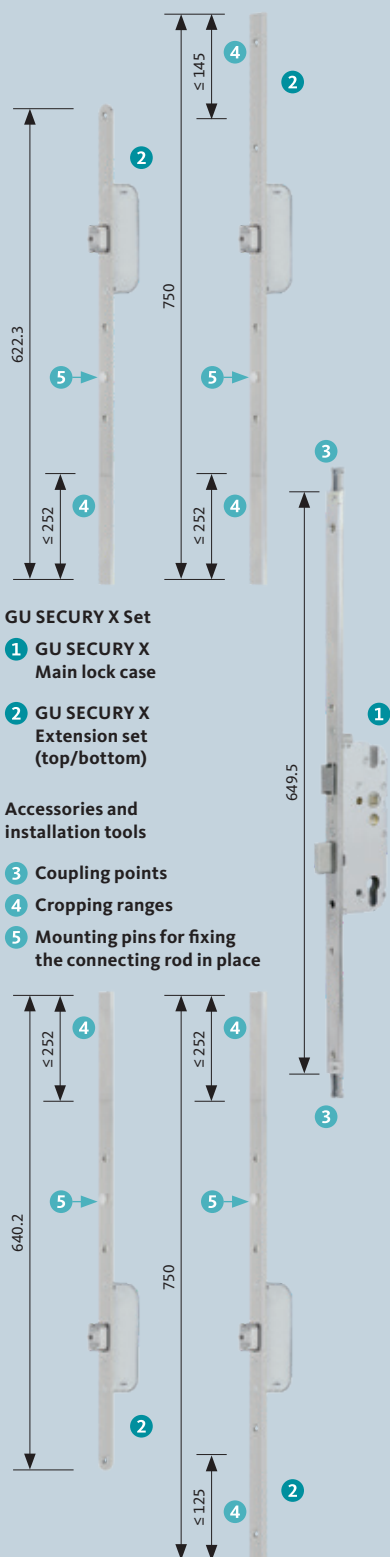
The basic suitability of the multi-point locks for use on fire-resistant and highly fire-resistant fire doors was tested to EN 1634-1.

The basic suitability of multi-point locks for use on smoke control doors and shutters was verified according to EN 1634-3.

Multi-point locks can then be used on fire and/or smoke control doors and shutters if they have been certified in combination with the relevant fire and/or smoke control barrier and are listed in their usability certificates or recorded in the corresponding documents.

Multi-point locks

GU SECURY X



GU SECURY X Set

- 1 GU SECURY X Main lock case
- 2 GU SECURY X Extension set (top/bottom)

Accessories and installation tools

- 3 Coupling points
- 4 Cropping ranges
- 5 Mounting pins for fixing the connecting rod in place

Example illustration



GU SECURY X

Exterior doors and apartment entrance doors present special challenges with regard to burglar resistance. The GU SECURY multi-point locks more than meet these ambitious expectations. The burglar resistance of existing doors can also be significantly improved retrospectively. With the GU SECURY X-SET, Gretsch-Unitas is not only retrofitting burglar-inhibiting technology, it is also offering solutions for basic security and repairs. When replacing fewer components on-site, the door does not have to be removed or replaced. The SET consists of a main lock case and extension hardware up and down which means that when it is installed in the door, the dimensions in relation to handle height and also the height of the additional locks can be varied.

GOOD TO KNOW

The flexible multi-point lock: GU SECURY X

- Easy installation with comfortable coupling point and locating pin to fix the connecting-rod into place
- Options for variable handle heights and locking points
- Flexibility in use with a wide range of door heights thanks to intermediate faceplate for extension
- Any number of cropping ranges for variable distances between the main lock case and additional locks
- Customised assembly of special versions



Massive bolt

Hook bolt

Roller locking cam

Round bolt

Automatic latchbolt

BENEFITS FOR USER

Comfortable: If a new multipoint lock is required, it can be replaced on-site at the customer's premises. The door does not have to be taken off or replaced during this procedure. The GU SECURITY X set includes all the necessary standard components, which dispenses with a second journey to the customer's premises.

Flexible: The GU SECURITY X multi-point lock can be used in all timber, PVC or steel door systems, also by other manufacturers. An extensive range of options is available, including special solutions such as variable locking points, which allows the customer to carry out the configuration independently. When selecting locking types, a number of variants are also available.

Energy-efficient:

Manually actuated locking systems: the conical design of the MR bolt or SH bolt ensures a perfect tight seal when locking the door which makes it highly thermally efficient.

Self-locking locking systems: The automatic locking system prevents the door from warping and ensures the door is sealed tightly.

Secure: As a retrofit product, the GU SECURITY X can provide additional security. The main lock case and additional locks are certified to DIN 18104-2.

Door gap security device

GU SECURITY with safe-T-catch set



GU SECURITY WITH SAFE-T-CATCH SET

Suitable for timber, PVC and metal door systems

A door gap security device can be retrofitted to the GU SECURITY manual-locking and self-locking multi-point locks. It is convenient to operate via the turn. When activated, the safe-T-catch engages and allows the door leaf to be opened by a small amount. This enables the user to communicate with somebody on the other side of the door without having to open it. This solution is particularly suitable for apartment entrance doors and house entrance doors in single-family homes.

GOOD TO KNOW

Security for house and apartment entrance doors: GU SECURITY with safe-T-catch set

- Expansion of GU SECURITY system technology with an optional set of safe-T-catches. This means that in future the fabricator can still retrofit a safe-T-catch to the GU SECURITY multi-point locks during the production process, according to customer requirements. This results in a reduction in variants, more flexibility for industry, retail sector and above all, the fabricator.
- Alternative to door chain or spyhole

BENEFITS FOR USER

Convenient: The safe-T-catch can be deactivated quickly and easily without any fuss by operating the rotary knob on the inside with one hand. The door chain belongs in the past.

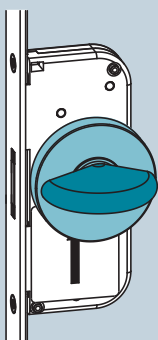
Secure: The door gap security feature of the safe-T-catch allows the door to be opened by only a gap, which provides added protection against uninvited entry after opening the door.

Functional principle

Activation

In the locked position on the inside, it engages with the safe-T-catch

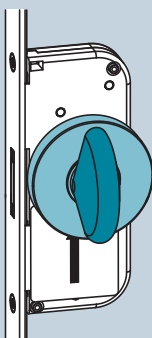
Bring safe-T-catch thumbturn into the horizontal position (*) when the door is closed.



Deactivation

The unlocking position on the inside releases the safe-T-catch

Bring safe-T-catch thumbturn into the vertical position (*) when the door is closed.



*The position of the safe-T-catch thumbturn depends on the installation!

The safe-T-catch SET is available for the following locking types:

- GU SECURITY MR, GU SECURITY DR, GU SECURITY SH
- GU SECURITY Automatic, GU SECURITY Automatic3, GU SECURITY Automatic4, GU SECURITY Automatic6
- GU SECURITY Automatic DR bolt (ADR)
- GU SECURITY EUROPA

The SECURITY variants with fire-retardant characteristics and for panic locking systems, remain unaffected by the retrofitting option.

Daytime release function

GU SECURITY TE module set



➔ Find out more!



GU SECURITY TE MODULE SET

Suitable for timber, PVC and metal door systems

An automatic multi-point lock with daytime release function for house entrance doors offers the security of a self-locking system as well as additional comfort. After closing the door, the locking elements of the locking system extend automatically and the door is securely locked at several points without locking. With the daytime release function, the automatic locking function can be disabled manually to make it easier to open the door during the day without having to operate the entire locking system. This is helpful if the door is used frequently, e.g. if it is to be opened from the outside using a push/pull handle or fixed knob and there is no need for a permanent locking.

GOOD TO KNOW

The new type of daytime release function: GU SECURITY TE

- Integration into the GU SECURITY system technology reduces the number of variants and optimises inventory management as a separate lock variant with daytime release does not have to be stocked
- On frame side, no electric strike is required for activation/deactivation of the daytime release function
- The frame-side daytime-release striker is non-handed according to DIN and can be adjusted in height by +1.5 / -3.1 mm
- The daytime release lock strip can be used instead of the daytime release striker

BENEFITS FOR USER

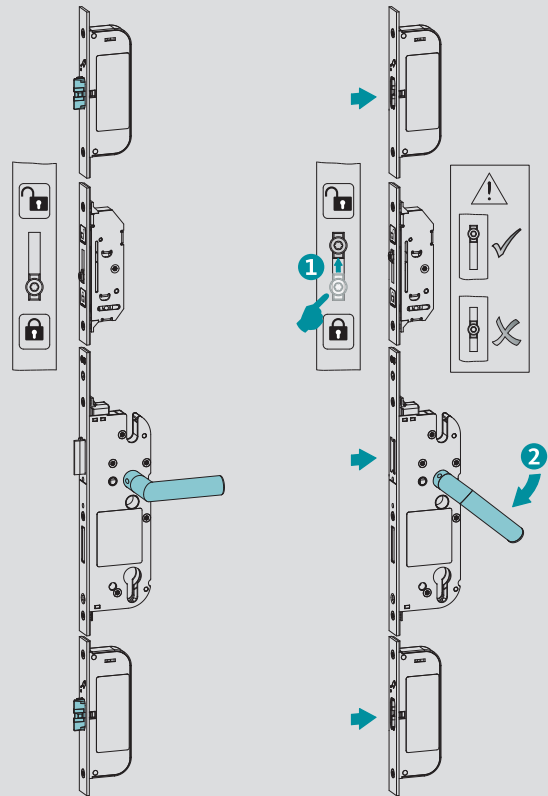
Comfortable: Activating and deactivating the daytime release function is simple and uncomplicated with one-hand operation - this is unique on the multi-point locking system market



Secure: The daytime release is an excellent choice for house entrance doors that temporarily need to be unlocked but also continue to guarantee the added security of a multi-point locking system.

Functional principle

The multi-point lock with daytime release function is activated/deactivated by an additional operating pin. By pushing the operating pin **1** upwards and lever handle actuation **2** the locking elements can be held back and the door can be passed permanently. The operating pin in conjunction with the safe-T-catch striker, which is integrated into the TE striker on frame side, serves as a retaining device comparable to a "bullet-catch".



Automatic latchbolt



Automatic double latchbolt



Automatic double bolt

THE ORIGINAL BY THE INVENTOR

Flexible: Depending on the customer requirements, the fabricator can retrofit a GU SECURITY TE module set to the GU SECURITY Automatic, GU SECURITY Automatic double latchbolt and GU SECURITY Automatic DR bolt self-locking multi-point locking systems during the production process.

Mechanical components

Lock strips, latch&deadbolt strikers, strikers



Example illustration of components
1-leaf door – GU SECURITY Automatic – 1750 mm

ACCESSORIES FOR 1-LEAF DOORS

Suitable for timber, PVC and metal door systems

With 1-leaf doors, a choice between striker, latch&deadbolt striker or lock strip is available on the frame side.

Locking systems for door heights greater than 2.50 m can be implemented using individual accessories (strikers) or faceplate extensions for lock strips.

The GU SECURITY multi-point locks can be variably equipped with extension pieces for 1-leaf doors. In addition, faceplate extensions with and without additional locks can be used, depending on the door situation.

Door leaf:

- 1 = Multi-point lock
- 2a = Top extension piece or extension with additional lock
- 2b = Bottom extension piece

Door frame:

- 3 = Striker
 - 4 = Latch&deadbolt striker
- alternatively:
- 5 = Lock strip
 - 6a = Top extension piece or extension for the additional lock
 - 6b = Bottom extension piece

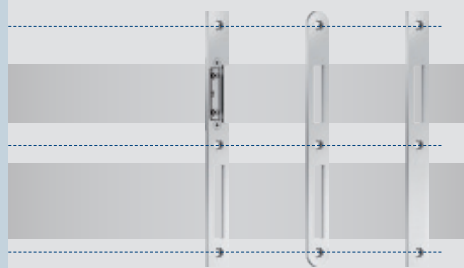


GU SECURITY Automatic

GU SECURITY Automatic4

Identically sized latch&deadbolt strikers for all SECURY multi-point locks and BKS mortise locks

- As part of the GU SECURY system technology, the latch&deadbolt strikers features uniform lengths, fixing hole patterns and deadbolt cutouts.
- Identical striker length = 216.5 mm
- Identical deadbolt cutout = 12.25 x 62 mm (W x H)
- Available with optional universal deadbolt casing
- For timber, PVC, aluminium and steel door systems
- Option of installing a deadbolt monitoring contact set



5 Example illustrations

Strikers



GU SECURITY Automatic

GU SECURITY Automatic4

L&D strikers



U-faceplate

Flat faceplate

Extension piece and extensions

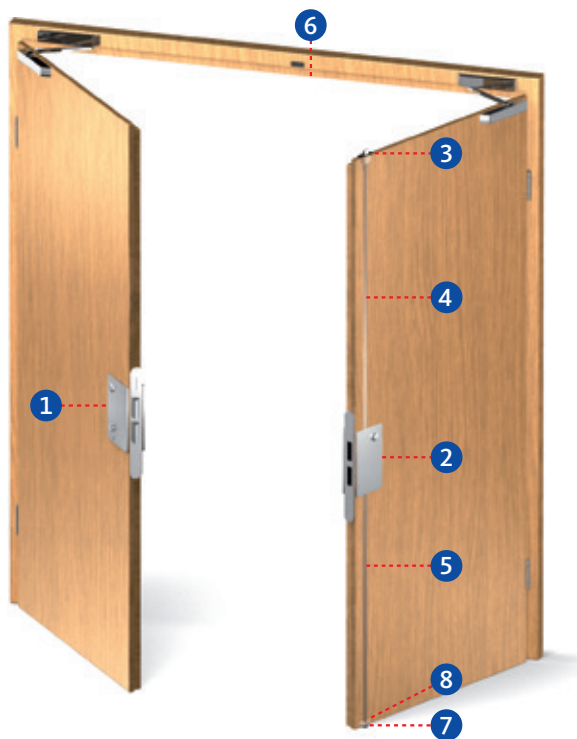


Extension piece

Extension

Mechanical components

Shoot-bolt locks



Example illustration of components
2-leaf timber door

SHOOT-BOLT LOCKS

Suitable for timber, PVC and metal door systems

Shoot-bolt locks are mounted on the inactive leaf of 2-leaf doors. When the inactive leaf is closed, automatic locking of vertical rods at the top and bottom is triggered by passive-leaf control lock B 1895. When unlocking, the vertical rods are retracted into the inactive leaf by operating the vertical lever or panic push bar which pushes the deadbolt back into the lock of the active leaf.

Active leaf:

1 = Panic lock

Passive leaf:

2 = Shoot-bolt lock

3 = Passive-leaf control lock

4 = Vertical rod

5 = Solid vertical rod

6 = Striker

7 = Floor striker

8 = Guide plate for vertical rod

Choice of variants

The shoot-bolt locks are available with automatic or manual locking or with motor-driven unlocking.

- Can be combined with all locks made by the Gretsch-Unitas group
- Extensive accessories
- One passive-leaf control lock (B 1895) for all shoot-bolt locks
- Can be combined with automatic swing-door drives
- Secure versions are also available: these are designed so the vertical rods cannot be pushed back
- The slide projections can be extended individually

GOOD TO KNOW

Motor-driven shoot-bolt lock

Barrier-free solutions must also reflect the exacting security requirements for public buildings. The motor-driven shoot-bolt lock in conjunction with an automatic swing-door drive is particularly suitable for use on double-leaf doors.

- **Security:** locking of inactive leaf to the top and bottom.
- **Convenience:** fast motor = fast unlocking
- **Efficiency:** fast installation – only one milling required for the lock pocket
- **Costs:** no power supply required for the active leaf = no wiring
- **Flexibility:** one leaf of a 2-leaf door can be operated without motor lock or electric strike



Fig.: B-1893 motor-driven shoot-bolt lock

	For use in			Locking type		For use with electric strike (METÖ)	Motor-driven unlocking	Backset [mm]	Approval/Standards		
	1-leaf	2-leaf	Material	Automatic	Manual				F	EN 179	EN 1125
B-1793	-	✓	Narrow stile doors	✓	-	✓	-	35-65	✓	✓	✓
B-189x	-	✓	Narrow stile doors	✓	-	-	-	30-80	✓	✓	✓
B-199x	-	✓	Narrow stile doors	✓	-	-	-	35-80	✓	✓	✓
B-219x	-	✓	Timber/steel doors	✓	-	-	-	65, 80, 100	✓	✓	✓
B-239x	-	✓	Timber/steel doors	✓	✓	-	-	65, 80, 100	✓	✓	✓
B-2392	-	✓	Timber/steel doors	✓	-	✓	-	65, 80, 100	✓	✓	✓
B-1893/B-1993	-	✓	Narrow stile doors	✓	-	-	✓	35-65	✓	✓	✓
B-2193/B-2393	-	✓	Timber/steel doors	✓	-	-	✓	65, 80, 100	✓	✓	✓

Mechanical components

Lever-operated gear, shoot-bolt



Example illustration of components
2-leaf door – GU SECURY Automatic – 1750 mm

ACCESSORIES FOR 2-LEAF DOORS

Suitable for timber, PVC and metal door systems

Shoot-bolts or lever-operated gears can be used in the inactive leaf of double-leaf doors.

Until now with locking systems higher than 2.50 m it was only possible to use shoot-bolts. The SECURY system technology offers an alternative - a faceplate extension for lever-operated gears.

The GU SECURY multi-point locks can be variably equipped with extension pieces for 2-leaf doors. In addition, faceplate extensions with and without additional locks can be used, depending on the door situation.

Active leaf:

- 1 = Multi-point lock
- 2a = Top extension piece or extension with additional lock
- 2b = Bottom extension piece

Passive leaf:

- 3 = Lever-operated gear
- 4 = Top striker
- 5 = Bottom striker (system threshold)
- 6a = Top/bottom shoot-bolt unit
- 6b = Top extension

alternatively:

- 7 = Striker
- 8 = Latch&deadbolt striker
- 4 = Top striker
- 5 = Bottom striker (system threshold)
- 9 = Shoot-bolt



GU SECURITY Automatic

GU SECURITY Automatic4

The lever-operated gear for convenient locking and unlocking of the inactive leaf for the GU SECURITY Automatic, Automatic4, Automatic-DR, MR2, SH2 and DR

- Simple installation
- Simultaneous upwards and downwards shoot-bolt protrusion
- Burglar-inhibiting
 - The active leaf can only be locked if the rebate lever is closed
 - If the rebate lever is tampered with, the pre-locked additional deadbolts prevent the door from being opened
 - RC2-tested in various door systems according to EN 1627-1630
- User-friendly due to ease of operation
- Variable shoot-bolt protrusion to cater for different constructional situations
- Can be used for all standard axes
- Can be combined with electric strike
- With operating lever above the central lock area

3

Example illustrations

Shoot-bolt



9

top

bottom

Shoot-bolt unit



6a

top/bottom

Electronic accessories

A-opener kit



➔ [Click here to download the installation instructions, certificates and installation drawings.](#)



A-OPENER KIT

Suitable for timber, PVC and metal door systems

The self-locking multi-point locks

- GU SECURITY Automatic with Automatic latchbolt, Automatic double latchbolt or Automatic double bolt
- SECURITY 19 and SECURITY 21

can be equipped with an optional opening motor. The locked door is unlocked remotely, e.g. by pressing the intercom push-button. When the pushbutton is actuated, a pulse is transmitted and the Automatic latchbolts of the multi-point lock are retracted by motor. Any access control system can be used on the outside. When installed with an A-opener, the locking system is suitable for barrier-free construction to DIN 18040. This type of door lock is often used in homes, offices and public buildings where high security requirements apply.

GOOD TO KNOW

Door opening as if by an "invisible hand": the A-opener kit

- Integration into the GU SECURITY system technology reduces the number of variants and optimises inventory management as a separate lock variant with motor-driven door unlocking does not have to be stocked
- The volume of the buzzer can be set gradually from the face-plate front side by a push-button

BENEFITS FOR USER

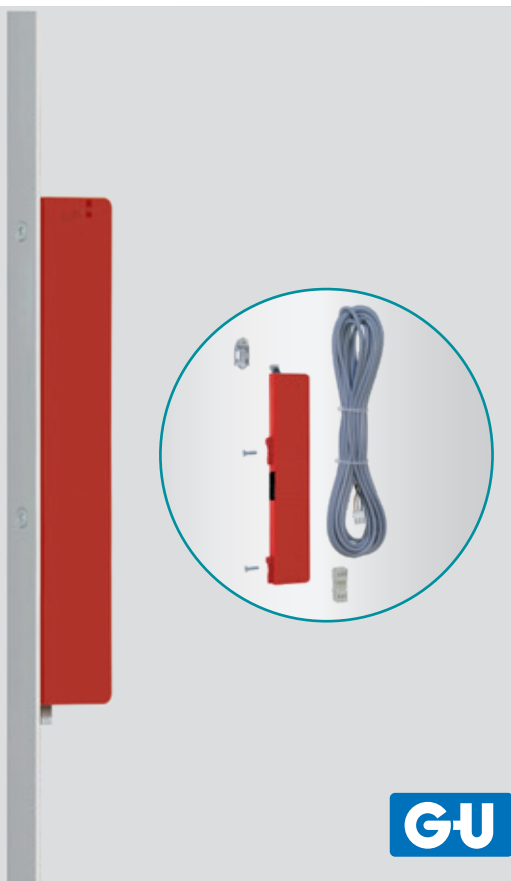
Convenient: The A-opener is an excellent choice for house entrance doors if convenient, rapid motor-driven unlocking of the door – without a key – is a must.

Secure: Mechanical locking and unlocking of the door with a key is still possible.

Flexible: The A-opener can be activated by an impulse, e.g. from the intercom, and can be combined with numerous access control systems (e.g. transponders, finger scanners, card readers). In the commercial/public sector, the A-opener can be combined with swing-door drives.

Electronic accessories

A-opener servo kit

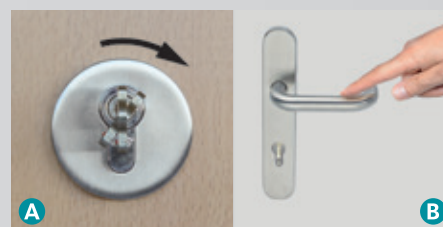


A-OPENER SERVO KIT

Suitable for timber, PVC and metal door systems

The self-locking multi-point locks

- GU SECURITY Automatic with Automatic latchbolt, Automatic double latchbolt or Automatic double bolt can be equipped with an optional opening motor.



The door is opened by turning the key only very slightly in the locking cylinder **A** or by lightly tapping the lever handle **B**. This activates the opening motor and the Automatic latchbolts of the GU SECURITY multi-point locks are retracted by an electric drive.

GOOD TO KNOW

The ignition lock for the main entrance door: A-opener servo kit

- Downward compatibility: A-opener servo door opening motors can be retrofitted to all GU SECURITY self-locking multi-point locks
- Integration into the GU SECURITY system technology reduces the number of variants and optimises inventory management as a separate lock variant with motor-driven door unlocking does not have to be stocked

BENEFITS FOR USER

Comfortable: The motor of the A-opener servo is activated if the key is turned slightly or the lever handle is lightly tapped and the Automatic latchbolts are retracted. Ideal for doors that require high operational forces, e.g. extra high doors with additional locks or doors with increased gasket pressure to withstand the effects of the weather.

Secure: Mechanical locking of the door with a key is also possible.

Flexible: In addition to manual activation, the A-opener servo can also be activated via a pulse, e.g. from the entrance door intercom.

Electronic accessories

Additional locking with query function, cable links, SECUREconnect



GU SECURY AUTOMATIC LATCHBOLT WITH QUERY FUNCTION

The locking state of self-locking SECURY multi-point locks can be monitored without the risk of tampering by replacing the upper or lower additional lock by a variant with integrated monitoring contact. This changeover contact reliably monitors whether the locking point is open or locked and relays this information to the building services management system.

Secure: The additional lock is C-certified by VdS and can therefore be connected to burglar alarm systems (certification in progress).

Flexible: The dimensions of the milled recess for the GU SECURY Automatic latchbolt are identical to the standard Automatic latchbolt so it can also be retrofitted to existing doors.



CABLE LINKS

Necessary to be used for protection of electrical cables with a diameter of up to 10 mm leading from frame to door leaf, e.g. for locks with monitoring contacts. The cable links protect extra-low voltage cables in doors against mechanical damage when the door is opened and closed.



SECUREconnect

More security and convenience for all mechatronic locks thanks to wireless power and data transmission. Door elements can be fully assembled at the workshop and electrically checked as an assembly. The power supply is integrated which renders the cable link and separate power supply unit obsolete. An additional benefit is unlimited door opening width and the door can also be easily hung and unhung.

Electronic accessories

Emergency power buffer, deadbolt monitoring contact, electric strike



EMERGENCY POWER BUFFER

In the event of a power failure, the emergency power buffer ensures that there is sufficient power to project the latchbolt into its locked position (obligatory for fire protection doors). The emergency power buffer blocks the electrical activation of the lock as long as no mains voltage is available. During commissioning or once the mains voltage has been restored, the lock can be activated again electrically.



DEADBOLT MONITORING CONTACT

The deadbolt monitoring contact is suitable for mounting in the striker, for monitoring the door lock. It is activated by the deadbolt or latchbolt. The signals can be evaluated in burglar alarm systems and monitoring systems. The switching lever can be extended, the switching point can be adjusted fourfold.



ELECTRIC STRIKE ET 8

An electric strike is an electrical device which is installed in the door frame with electromagnetic latch release controlled by remote control. Electric strikes are frequently combined with intercoms or surveillance cameras which enable occupants to identify visitors before they open the door. Electric strikes are normally used on house entrance doors of multiple-occupancy dwellings, commercial projects, medical practises or company premises.

The GU-BKS electric door strikes of the ET 8 series cover in just a few variants all standard mechanical and electrical requirements. Due to its compact design and 52.5 mm distance between screw centres, the GU-BKS electric strike ET 8 can be retrofitted in existing profiles.

Standards and directives

Overview

For doors and door-related products, a whole range of standards and directives exists. The most important standards are:

DIN 107

Building construction; identification of right and left side

DIN 1080, part 1

Definitions, symbols and units in civil engineering, basics

DIN 4102, part 5 and 18

Part 5: Behaviour of building materials and components in fire; fire barriers, barriers in lift wells and fire-resistant glazing systems

Part 18: Fire behaviour of building materials and components; fire barriers; attestation of the quality 'self-locking' (durability test)

DIN 18055

Windows; joint impermeability, tightness against driving rain and to mechanical stress; specifications and tests

DIN 18082, part 1 and 3

Part 1: Fire barriers, steel doors T30-1, type A

Part 3: Fire barriers, steel doors T30-1, type B

DIN 18095, parts 1 and 2

Part 1: Doors; smoke control doors; terms and requirements

Part 2: Doors; smoke protection doors; type testing for operational reliability and leakage

DIN 18100

Doors; wall openings for doors; dimensions according to DIN 4172

DIN 18101

Doors, doors for buildings; sizes of door leaves, position of hinges and lock; interdependence of dimensions

DIN 18111, part 1

Door frames, steel door frames, standard door frames for rebated doors in masonry

DIN 18250

Mortise locks for fire rated doors

DIN 18251

Locks; mortise locks for doors

DIN 18252

Profile cylinders for door locks; terminology, designations

DIN 18255

Architectural hardware; lever handles, backplates and rosettes – terms, dimensions, requirements

DIN 18257

Building hardware; security hardware – definitions, measurements, requirements, testing and markings

DIN 18273

Building hardware; lever handle units for fire doors and smoke control doors – terms and definitions, dimensions, requirements and testing

DIN 18357

German construction contract procedures (VOB), part C: General technical specifications in construction contracts (ATV) – mounting of door and window hardware

DIN 18361

German construction contract procedures (VOB), part C: General technical specifications in construction contracts (ATV) – glazing work

DIN 68706, part 1

Interior doors of timber and timber materials, plywood doors, terms, preferential dimensions, structural features

EN 179

Emergency exit devices operated by a lever handle or push pad

EN 1125

Panic exit devices operated by a horizontal bar

EN 1154

Controlled door closing devices

EN 1303

Building hardware – cylinders for locks – requirements and test methods

EN 1627

Windows, doors, shutters – burglar resistance – requirements and classification

EN 1628

Windows, doors, shutters – burglar resistance – test method for the determination of resistance under static loading

EN 1629

Windows, doors and shutters – burglar resistance – test method for the determination of resistance under dynamic loading

EN 1630

Windows, doors, shutters – burglar resistance – test method for the determination of resistance to manual burglary attempts

EN 1634, part 1 and 3

Fire resistance tests for door assemblies and barriers

Part 1: Fire barriers

Part 3: Smoke control doors and shutters

EN 1906

Building hardware, lever handles and door knobs – requirements and test methods

GU System solutions

Supplementary products for doors

Opening the door to the future

The Gretsch-Unitas group offers precisely harmonised system solutions for opening, moving, closing and securing doors. They meet various requirements such as fire protection, burglar inhibition, suitability for use with escape doors, access control, barrier freedom, convenience and aesthetics – irrespective of whether in new builds, extensions or retrofitting to existing systems.





WINDOW TECHNOLOGY
DOOR TECHNOLOGY
AUTOMATIC ENTRANCE SYSTEMS
BUILDING MANAGEMENT SYSTEMS

Gretsch-Unitas GmbH
Baubeschläge
Johann-Maus-Str. 3
71254 Ditzingen
Germany
Tel. +49 7156 301-0
Fax +49 7156 301-77980

BKS GmbH
Heidestr. 71
42549 Velbert
Germany
Tel. +49 2051 201-0
Fax +49 2051 201-9733

www.g-u.com

WP00320-04-2-2 03/2026



Copyright notice

All images and texts in this brochure are copyright protected. Unless otherwise stated on the image, the rights belong to the Gretsch-Unitas group. Any use of copyright protected materials without the consent of the holder of the rights is prohibited.

Publisher:

Gretsch-Unitas GmbH Baubeschläge, Johann-Maus-Str. 3, D-71254 Ditzingen
Tel. +497156 3 01-0, Fax +497156 3 01-293, www.g-u.com

Securing technology for you

