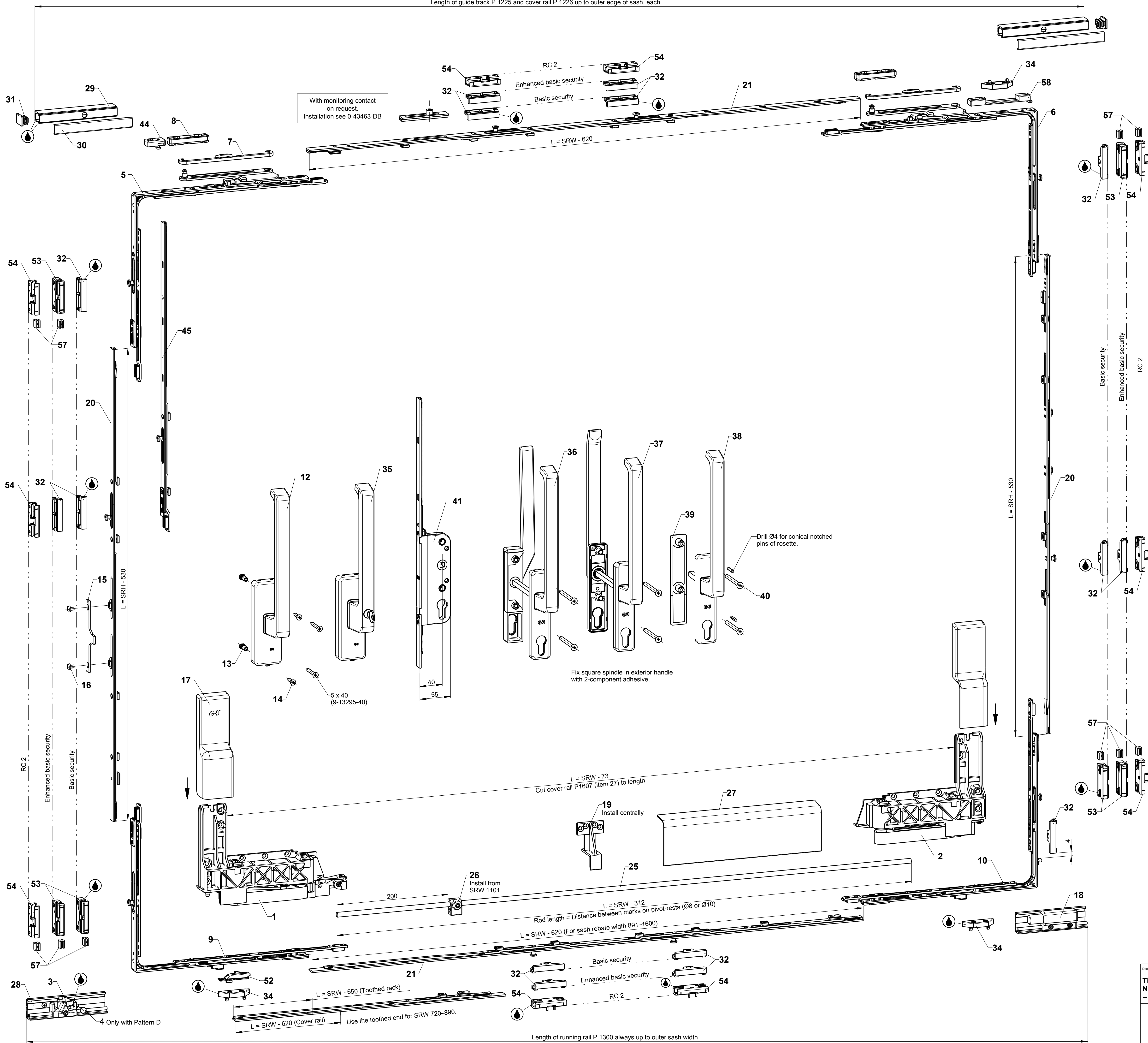


Item.	Description	Order no.	Qty. per pattern				
			A	C	D	G	K
1	Front bogie	6-32544-00	1	2	1	2	
2	Rear bogie	6-29559-00	1	2	1	2	
3	Control part	6-33329-00	1	2	1	2	
4	Fixing pin	9-39897-00	--	--	1	--	--
5	Front stay	AX9	1	--	1	2	
		right					
		AX13					
		right					
5A	Front stay Pattern C, active sash	AX9	--	1	--	--	
		left					
		AX13					
		left					
5B	Front stay Pattern C, passive sash	AX9	--	1	--	--	
		left					
		AX13					
		right					
6	Rear stay	AX9	1	2	1	2	
		left					
		AX13					
		right					
7	Stay cover	9-35573-00	2	4	2	4	
8	Stay-arm slide block	6-22755-00	2	4	2	4	
9	Front corner-drive	6-32539-00	1	--	1	2	
9A	Front corner-drive Pattern C active	6-34992-00	--	1	--	--	
9B	Front corner-drive Pattern C passive	6-32543-00	--	1	--	--	
10	Rear corner-drive	6-32550-00	1	2	1	2	
12	DIRIGENT geared turn handle	6-24542-00	1	2	1	2	
13	Sleeve nut	9-30705-00	2	4	2	4	
14	Countersunk screw DIN 965 - M5 x 20	9-13133-20	2	4	2	4	
15	Coupling	AX9	1	2	1	2	
		AX13					
		AX13					
		Overlap height					
16	Fillister head screw DIN 7985 - M5 x 6	9-13290-06	2	4	2	4	
17	Cover cap (for item 27)	9-38542-00	1	2	1	2	
18	Spring-loaded buffer	6-29565-00	1	2	1	2	
19	Bracket	9-38522-00	1	2	1	2	
20	Vertical extension	SRH	2	3	2	4	
		Length					
		LC-MA					
		Handle height					
		820-995					
		465					
		-					
21	Horizontal extension	SRH	2	4	2	4	
		Length					
		LC-MA					
		Handle height					
		720-890					
		730					
		0					
25	Rod Ø8	SRW	1	2	1	2	
		Length					
		720-850					
		600					
		850					
26	Support	SRW	1	2	1	2	
		Length					
		720-850					
		600					
		850					
27	Bottom cover rail P 1607	SRW	1	2	1	2	
		Length					
		720-850					
		785					
		1035					
28	Roller track P 1300	9-31483-99				1	
29	Guide track P 1225	9-30140-99				1	
30	Cover rail P 1226	9-30141-99				1	
31	Cover cap (for item 29)	9-30142-00				2	
32	Standard striker	Refer to: Table of strikers and engaging strikers					
34	Engaging Striker	Refer to: Table of strikers and engaging strikers					
52	Mishandling device	K-17060-00-9	1	2	1	2	
53	Steel Sec striker	Refer to: Table of strikers and engaging strikers					
54	Steel Sec striker	Refer to: Table of strikers and engaging strikers					
57	Clearance packer	Refer to: Table of strikers and engaging strikers					
58	Sash centering device	9-43223-00	1	2	1	2	
65	ZK lever-operated gear	SRH	--	1	--	--	
		Length					
		1371-1620					
69	ZK lever	6-25020-00	--	1	--	--	
69A	Spax countersunk screw 4 x 70	9-13246-70	--	2	--	--	
77	Standard striker pattern C	Refer to: Table of strikers and engaging strikers					
77A	Countersunk screw M4 x 10	Refer to: Table of strikers and engaging strikers					
78	Zamak Sec striker pattern C	Refer to: Table of strikers and engaging strikers					

Accessories													
Item.	Description							Order no.	Qty. per pattern				
									A	C	D	G	K
35	DIRIGENT geared turn handle, lockable							6-26058-00	1	2	1	2	
36	DIRIGENT interior/exterior handle set with PC hole Height of exterior handle: 15 mm								6-25164-00	1	2	1	2
37	DIRIGENT interior/exterior handle set with PC hole Height of exterior handle: 30 mm							6-24624-00	1	2	1	2	
38	DIRIGENT interior turn handle with PC hole							6-24622-00	1	2	1	2	
39	Exterior cover rosette							6-24623-00					
40	Countersunk screw M6							9-13274-00	2	4	2	4	
	ST	up to 60	61-65	66-70	71-75	76-80	81-85						86-90
	M6 x	65	70	75	80	85	90	95					
41	Lockable drive-gear backset 40 (same lengths as item 20). With the use of a lockable drive-gear, only one extension item 20 is required. SRH min. = 850.							6-32335-99	1	1	1	2	
	Optionally used: Lockable drive-gear backset 30							6-32343-99					
41A	Lockable drive-gear backset 30						SRH	6-33574-04	--	1	--	--	
							1371-1620						
	Lockable drive-gear backset 40						1621-1870	6-33574-55					
							1371-1620	6-33575-04					
	Lockable drive-gear backset 50						1621-1870	6-33575-55					
							1371-1620	6-33576-04					
							1621-1870	6-33576-55					
43	Horizontal extension				SRW	Length	LC-MA	6-32307-12	2	4	2	4	
44	T&S buffer for P 1225				720-889	270	1						
45	Gear extension							6-24737-00	2	4	2	4	
	L = 250 mm L = 500 mm (1 locking pin)							6-32993-00					
45A	Rebate shoot bolt extension				SRH		Length		6-25059-00	--	1	--	--
					1871-2370		500						
	SRH		Length	LC-MA	Handle height								
66	ZH lever-operated gear				1371-1620	1090	1	495	6-33017-04	--	1	--	--
					1621-1870	1340	1	703	6-33017-55				
68	Protective cap for lever							9-34300-00	--	1	--	--	

Strikers and engaging strikers																																															
Item.	Description	Order no.	SRW	SRH	Basic security Qty. per pattern				Enhanced basic security Qty. per pattern				RC 2				SRH	C																													
																		With dummy mullion profile (Qty. per pattern)																													
																		Basic security		Enhanced basic security		RC 2																									
32	Standard striker	Acc. to profile	720-890	820-995	3	6	2	1371-1620	10	5	2																																				
				996-1620	5	10	6					1621-1870	13	8																																	
				1621-2370	7	14	10								1871-2370	16	11																														
				820-995	5	10	6											1371-1620	14	9																											
				996-1620	7	14	10														1621-1870	17	12																								
				1621-2370	9	18	14																	1871-2370	20	15																					
				820-995	7	14	10																				1371-1620	18	13																		
				996-1620	9	18	14																							1621-1870	21	16															
				1621-2370	11	22	18																										1871-2370	24	19												
54	Steel Sec striker		720-890	820-995	--	--	--	4	8	1371-1620	--																									--	13										
				996-1620				6	12	1621-1870		16																																			
				1621-2370				8	16	1871-2370			19																																		
				820-995				6	12	1371-1620				17																																	
				996-1620				8	16	1621-1870					20																																
				1621-2370				10	20	1871-2370						23																															
				820-995				8	16	1371-1620							21																														
				996-1620				10	20	1621-1870								24																													
				1621-2370				12	24	1871-2370									27																												
34	Engaging Striker			--	3	6	3	6	3	6	6																																				
57	Clearance packer		9-43219-00		2	4	4	8	4	8	--																																				
					Optional part		Optional part		Standard																																						
77	Standard striker Pattern C		9-31960-00	--																1371-1620																											
															1621-1870					--	--	--																									
															1871-2370																																
77A	Countersunk screw M4 x 10	9-13281-10	--											1371-1620																																	
														1621-1870	--	--	--																														
														1871-2370																																	
78	Zamak Sec striker Pattern C	9-39189-00	--											1371-1620																																	
														1621-1870	--	--	--																														
														1871-2370																																	

Length of guide track P 1225 and cover rail P 1226 up to outer edge of sash, each



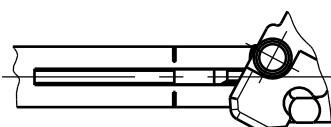
## Installation instructions

Holes and cutouts according to specified dimensions, preferably by means of appropriate jigs. Peripheral clearance: 12 mm.

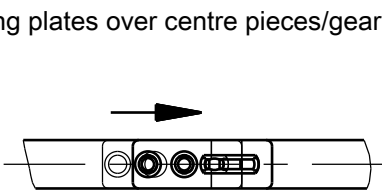
## Hardware installation on sash

All hardware components are installed in the tilt position.

1. Install corner-drives (items 9 + 10) at bottom and stay arms (items 5 + 6) at top and put them in the tilt (= installation) position.



2. Crop vertical extensions (item 20) or lockable drive-gear (item 41 or 41A), and horizontal extensions (item 21), insert in corner-drives and stays and fasten with screws.  
(Correct installation position predefined by arresting pin. Centre of locking cam must be aligned with marking notches).  
Note: When cropping the horizontal extensions size 01, ensure that the long toothed section is flush with the gear.



3. Slide connecting plates over centre pieces/gear until stop and fasten with screws.

4. Install coupling (item 15).

5. Fix geared turn handle (item 12); ensure that the connector engages in the coupling.  
Alternatively: install geared turn handle (item 35).

6. Install front and rear bogie, fasten support (item 19) at centre of sash.

7. Crop rod Ø8 (item 25), insert it in the rear bogie and fasten screw tightly, then insert the rod in the front bogie.

8. Put bogies in their closed position and firmly tighten screw on front bogie. Tightening torque: 10-12 Nm.

## Hardware installation on frame

9. Put strikers and engaging strikers in place. Use positioning jigs as shown in drawing.

10. Crop guide track P 1225 (item 29) and cover rail P 1226 (item 30) and install them. Install the guide track, insert stay-arm slide blocks (item 8) and cover caps (item 31).

11. Crop and install roller track P 1300 (item 28).

12. Push control part (item 3) onto roller track and tighten screws using an Allen key size 4. Tightening torque: 10-12 Nm.  
Use drilling jig 6-30447 for elements without mullion (pattern D).



## Attention

## Installing the sliding sash

13. Put the hardware in the tilt position (handle is horizontal).

14. Place the sash at an angle on the roller track. Insert stay-arm pins fully into gliders and tighten with Allen key size 4. See sheet 3.  
Pull on stay-arm firmly to ensure it is securely locked.

## Checking the sash position

15. Sash not in parallel with frame in horizontal direction:  
Loosen clamping screws for connecting rod on front bogie, align sash in parallel, firmly retighten screws.

16. Sash not in parallel with frame in vertical direction:  
Pull out slide lock on front and rear bogie to access the vertical adjustment screws. Align sash vertically using a 4 mm Allen key, push slide locks back again.

17. Shift control part on roller track to obtain an equal rebate clearance on both sides, if necessary. Make sure to tighten the locking screw again.

18. Install sash centering device (item 58) centrally. If necessary, align by sliding to left or right.

19. Install spring-loaded buffer (item 18) onto roller track according to the opening width desired, then tighten with 4 mm Allen key.

20. Clip cover rail P 1226 (item 30) onto guide track P 1225 (item 29).

21. Crop cover rail P 1607 (item 27) and clip between bogies.

22. Insert cover caps (item 17) from above until they snap in.

23. Running rail P 1300 (item 28) must be supported over its total length and fixed to the frame with screws.

The specified fastening screws are a recommendation based on our experience.

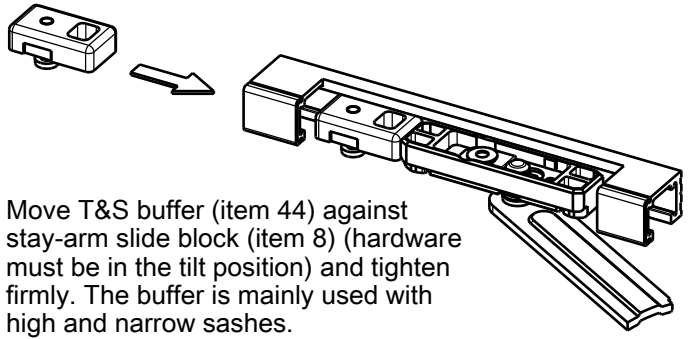
The responsibility for the appropriate fastening of hardware components lies with the window and balcony-door fabricator.

Hardware components depicted in factory condition.

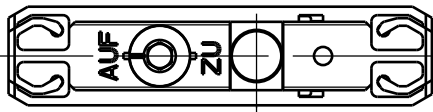
Locking, sliding and bearing points to be lubricated with non-resinous and acid-free lubricant.

## Hardware overview

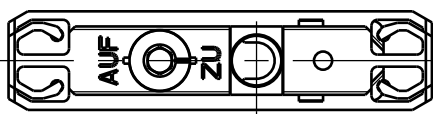
Description		Scale		Modification		Size	
Tilt&Slide hardware GU-966/150 mZ		Scale		Modification		Size	
Neutral PVC profiles, Axis 9/13 mm		Scale		Modification		Size	
--		Scale		Modification		Size	
GU		Scale		Modification		Size	
Release No.		Level		Released		Scale	
Mod. No.		Ver.		--		%	
G33924		Draft		18.08.2016		KJ	
Replacement by --							
				Drawing No.		Sheet	
				0-45891-BL-0-EN		2/8	



Lock stay-arm pin with Allen key size 4. See installation instructions point 14.

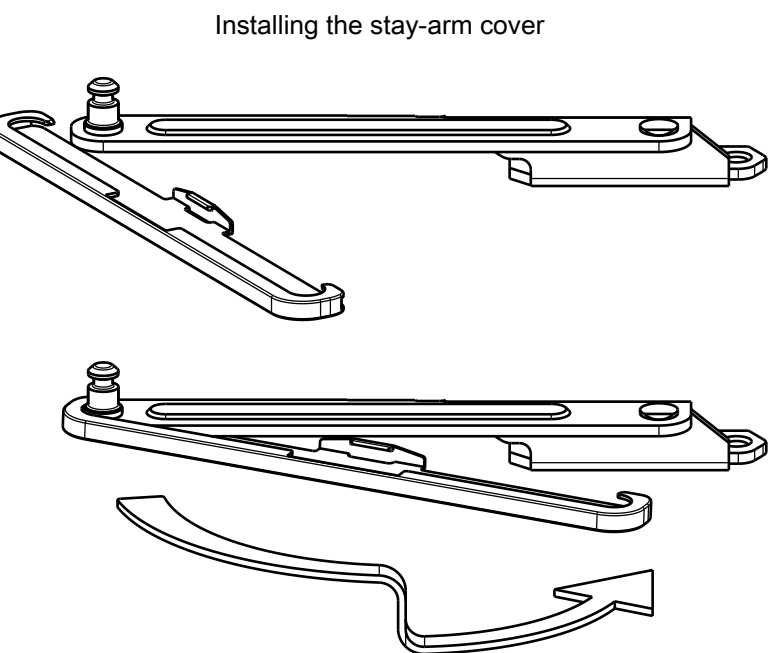


released

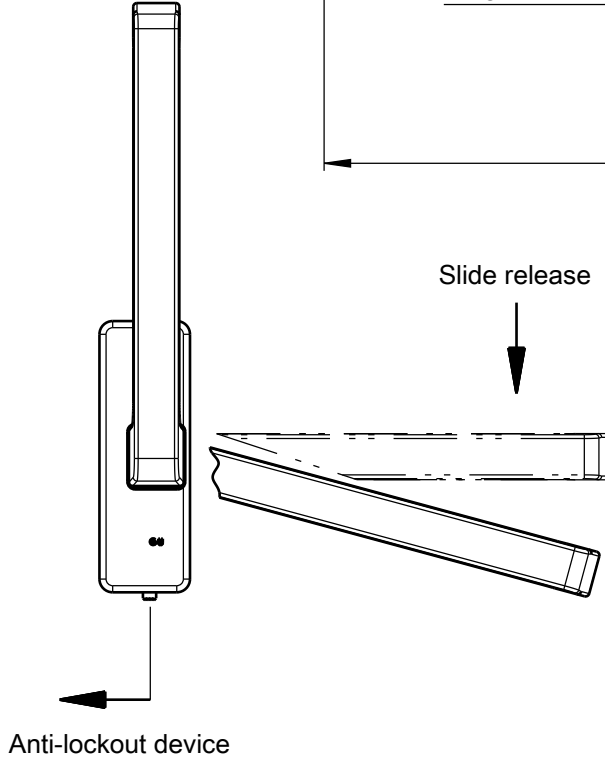


locked

**Attention**  
Pull on stay-arm firmly to ensure it is securely locked.



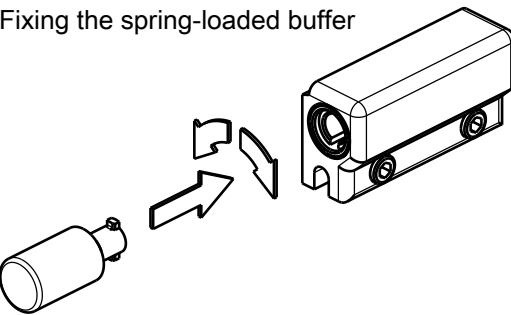
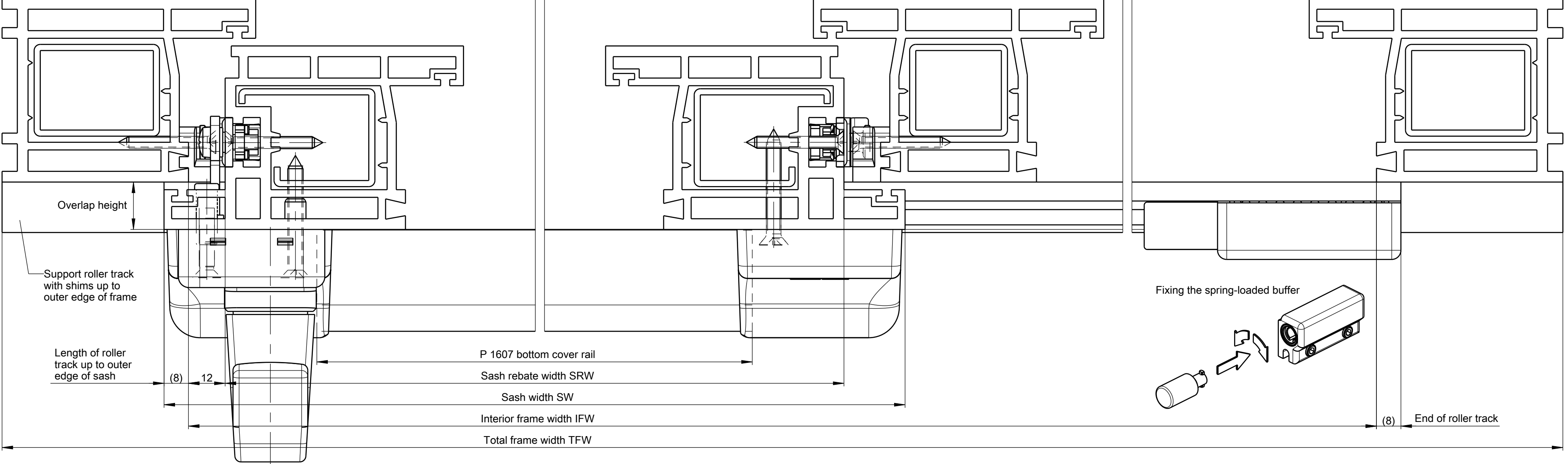
Installing the stay-arm cover



Anti-lockout device

### Pattern A

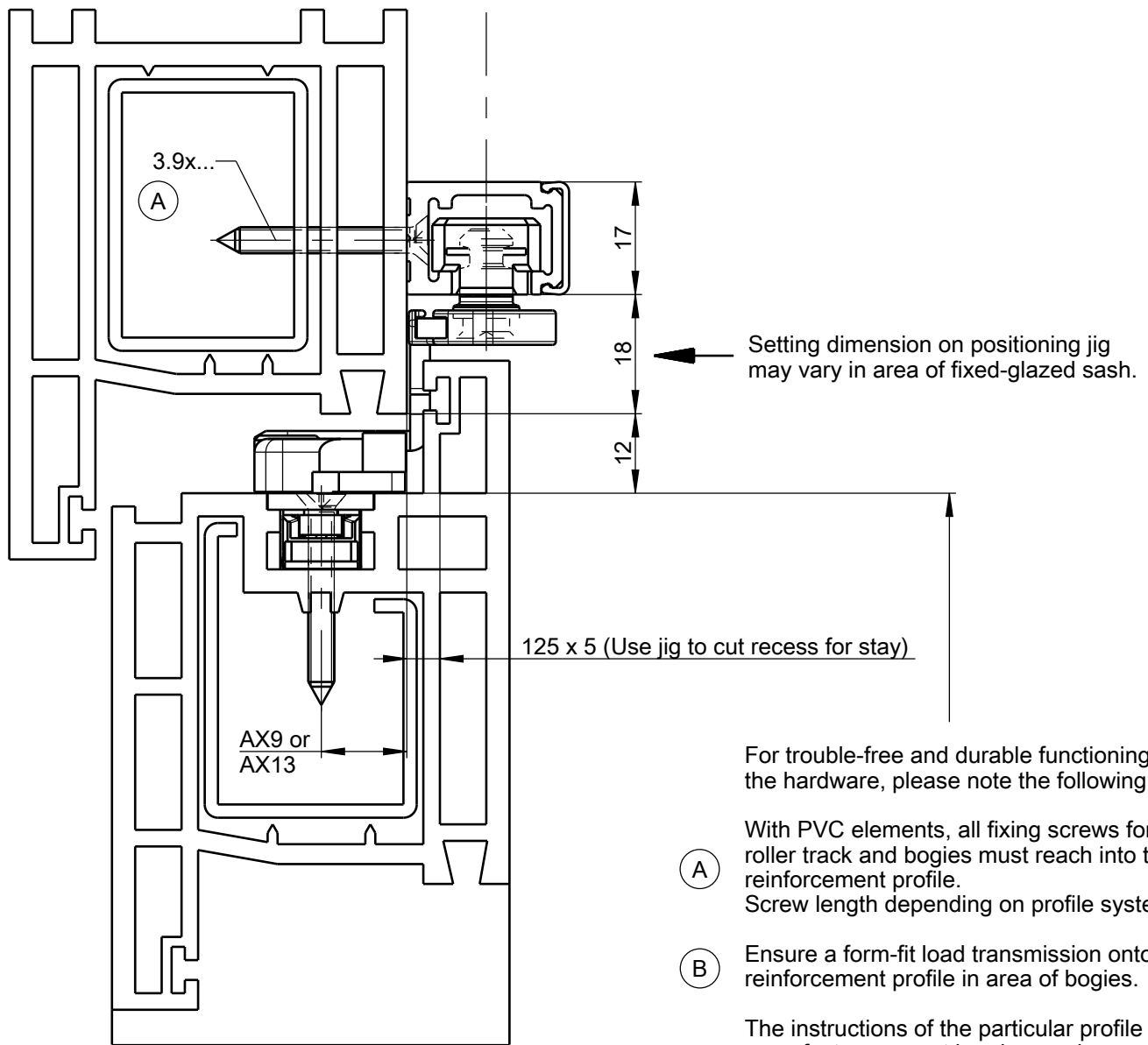
1 Sliding sash, 1 Fixed glazing



Fixing the spring-loaded buffer

End of roller track

1:1



Setting dimension on positioning jig may vary in area of fixed-glazed sash.

125 x 5 (Use jig to cut recess for stay)

AX9 or AX13

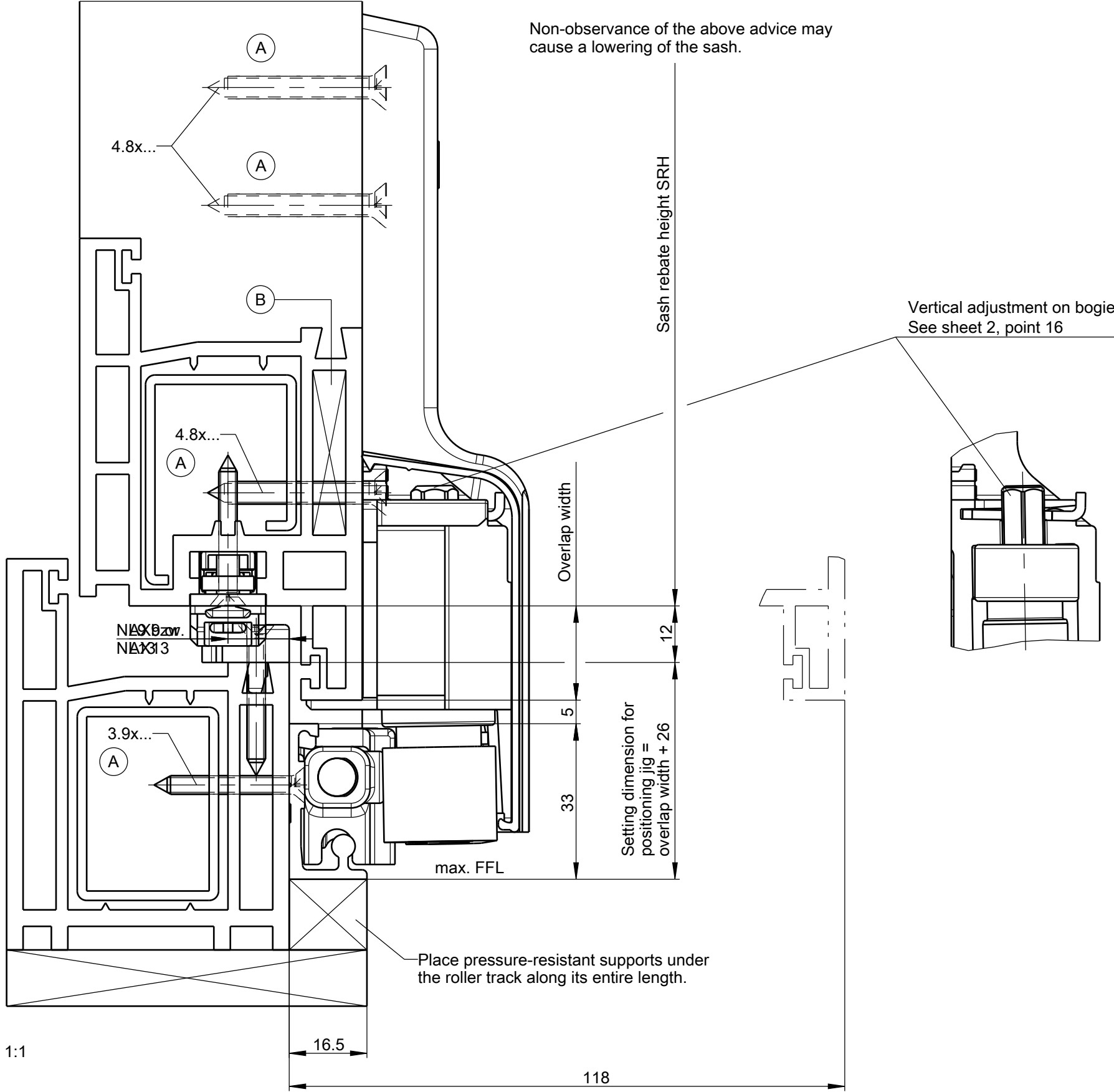
For trouble-free and durable functioning of the hardware, please note the following:

(A) With PVC elements, all fixing screws for roller track and bogies must reach into the reinforcement profile. Screw length depending on profile system.

(B) Ensure a form-fit load transmission onto the reinforcement profile in area of bogies.

The instructions of the particular profile manufacturers must be observed.

Non-observance of the above advice may cause a lowering of the sash.



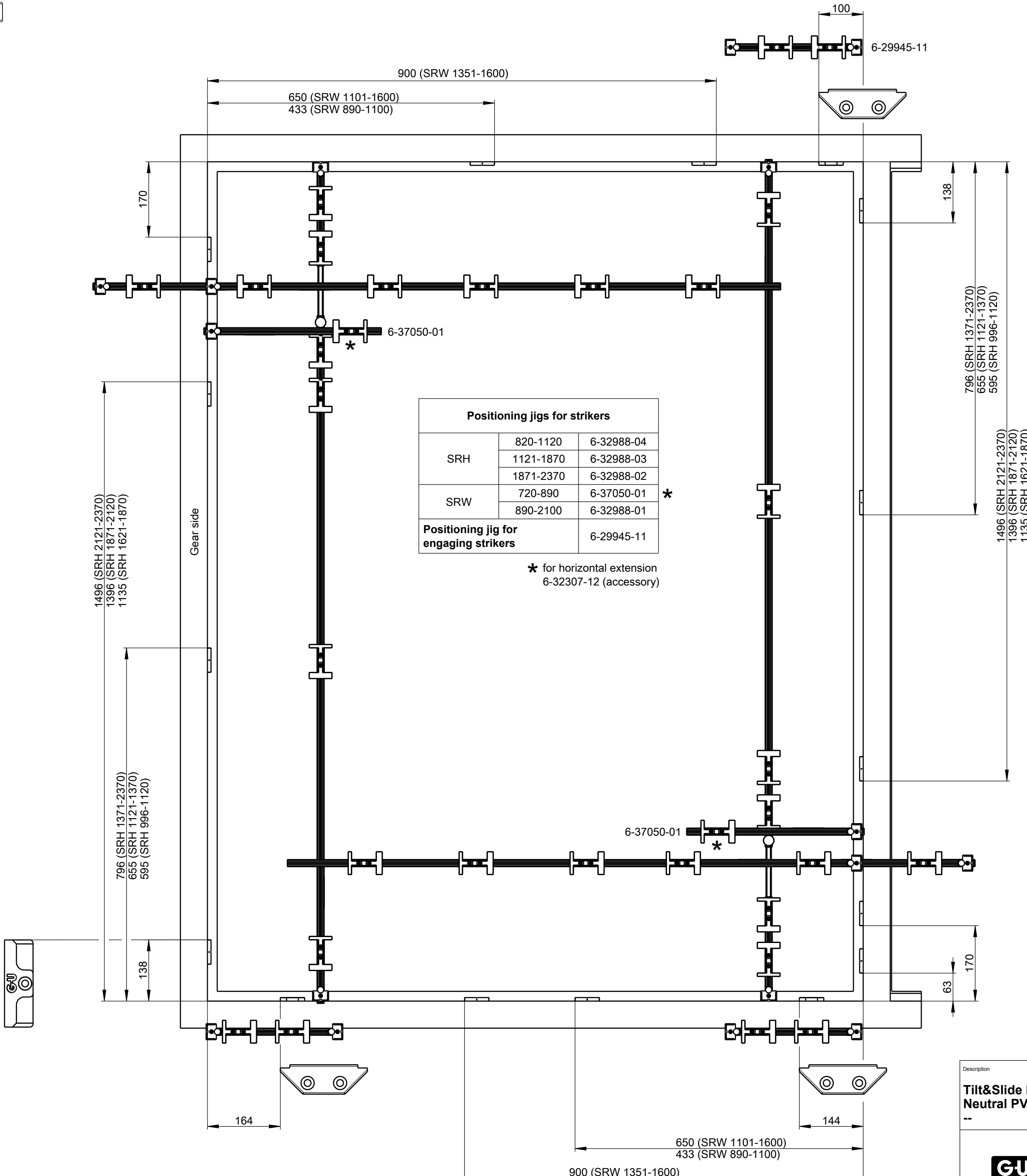
Vertical adjustment on bogie  
See sheet 2, point 16

Sash rebate height SRH

Overlap width

Setting dimension for positioning jig + 26

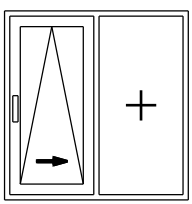
Place pressure-resistant supports under the roller track along its entire length.



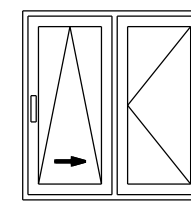
Positioning jigs for strikers		
SRH	820-1120	6-32988-04
	1121-1870	6-32988-03
	1871-2370	6-32988-02
SRW	720-890	6-37050-01 *
	890-2100	6-32988-01
Positioning jig for engaging strikers		6-29945-11

\* for horizontal extension  
6-32307-12 (accessory)

### Pattern A / Sectional views



1 Sliding sash, 1 fixed glazings



1 Sliding sash, 1 Turn-Only sash with fixed mullion profile  
Installation of Turn-Only hardware  
Drawing 0-44324-DD Basic security  
Drawing 0-44908-DD RC

Description					
Tilt&Slide hardware GU-966/150 mZ Neutral PVC profiles, Axis 9/13 mm					
--					
Release No.	Level	Released	Scale	Modification	Size
Ver	---	---	%	4	1
Draft	18.08.2016	KJ			
Replacement for --					
0-45891-BL-0-EN					Sheet
					3/8

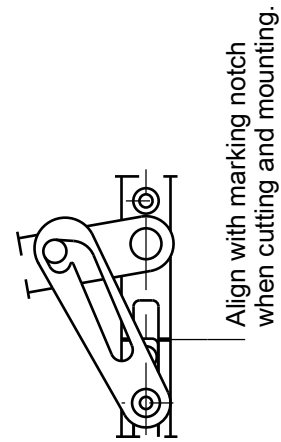
EN  
FR  
ES

NS

Holes and cutouts according to specified dimensions, preferably by means of appropriate jigs.

All hardware components are installed in the tilt position.

1. Install corner-drives (item 9A + 9B) and stays (item 5A + 5B) and put them in the initial position (= installation position).
2. Crop extensions (item 45 + 45A), insert in stays and fasten with screws. For cropping dimensions see depictions below.
3. Install vertical extensions (item 20) or lockable drive-gear (item 41 or 41A). Crop ZK or ZH lever-operated gear (item 65, resp. item 66) and horizontal extensions (item 21), insert in corner-drive and fasten with screws.  
For cropping dimensions see depictions below.  
Correct mounting position predefined by arresting pin. In the case of ZH lever-operated gear (item 66), align with marking notch (see depiction below)



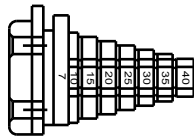
4. Mount locking plates (item 77 or 78) with countersunk screws M4 x 10 or Spax 4 x 40 (or similar, as for corner transmission).

5. Mount the prepared false mullion profile.

6. With rebate shoot bolt ZK (item 65) cut tappets to correspond to width of false mullion (Dim. X).

Example:

Dim X = 28 mm rounded down to the next five = 25 mm; cut carriers to a dimension between 25 mm and 30 mm.

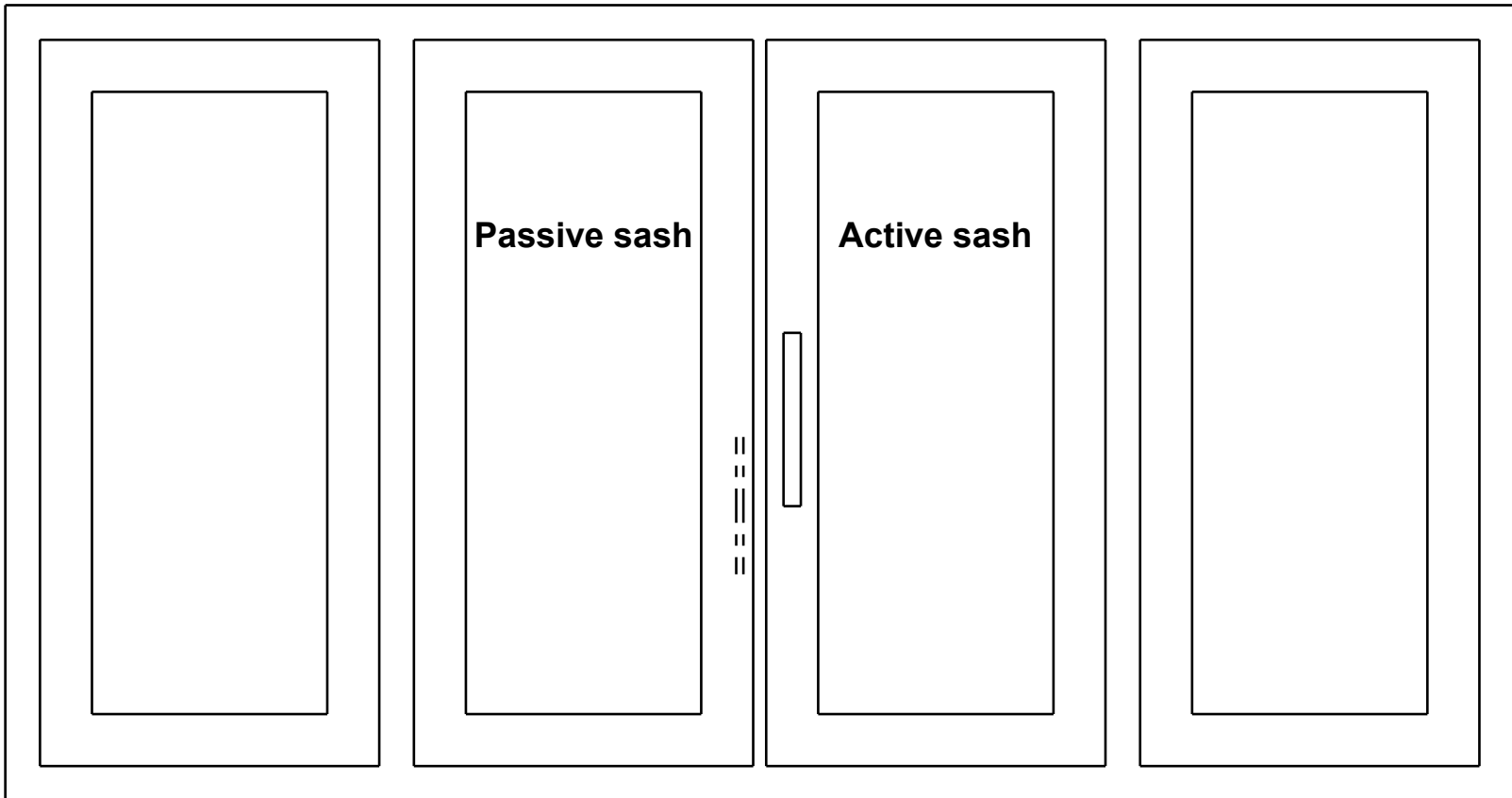
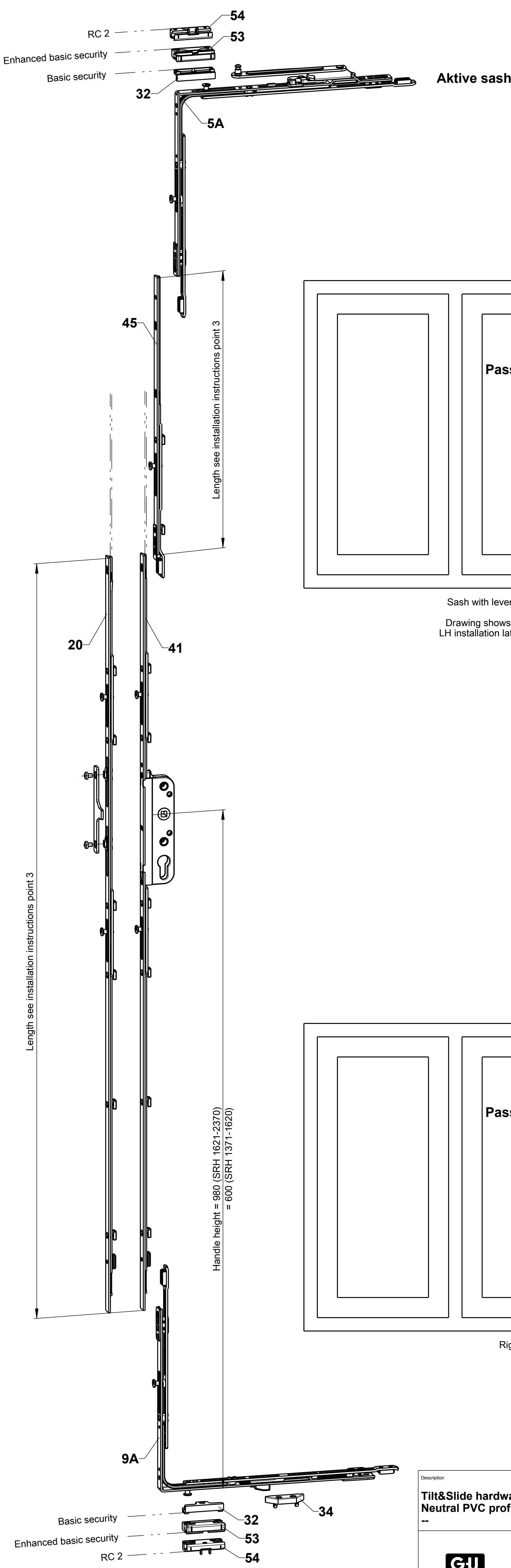
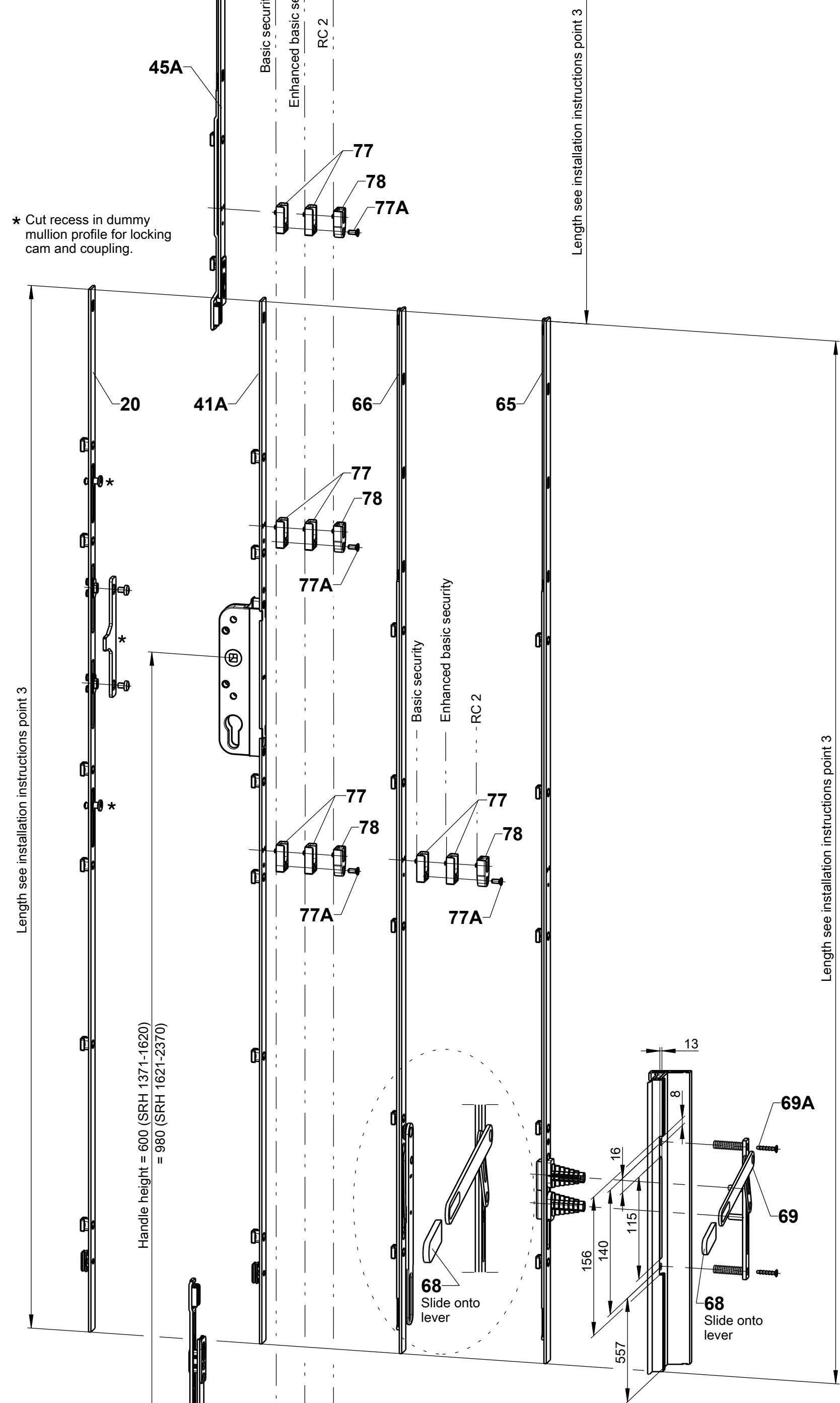


7. Mount rebate shoot bolt ZK (item 65) with lever in horizontal position.
8. Attach locking plates to false mullion with screws.

The fastening screws specified are only a recommendation based on our experience.

The responsibility for the appropriate fastening of fitting components rests with the window/ window door fabricator.

Fitting components illustrated in ex factory state.

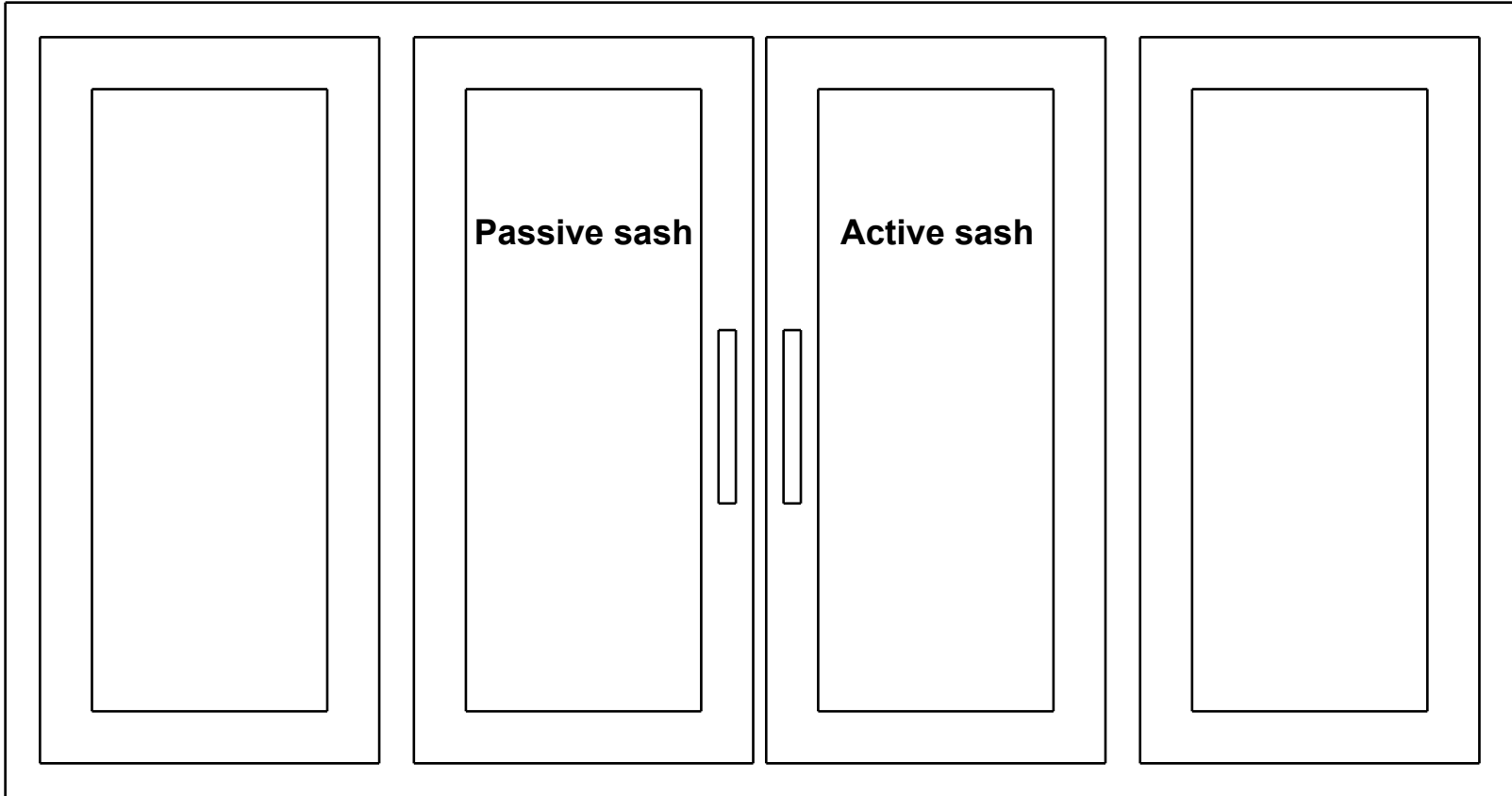


Sash with lever-operated gear

Drawing shows RH installation  
LH installation laterally reversed

### Active sash

Drawing shows LH installation  
RH installation laterally reversed



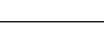
Right sash to be opened first and closed last.

## Pattern C / Hardware overview

Description

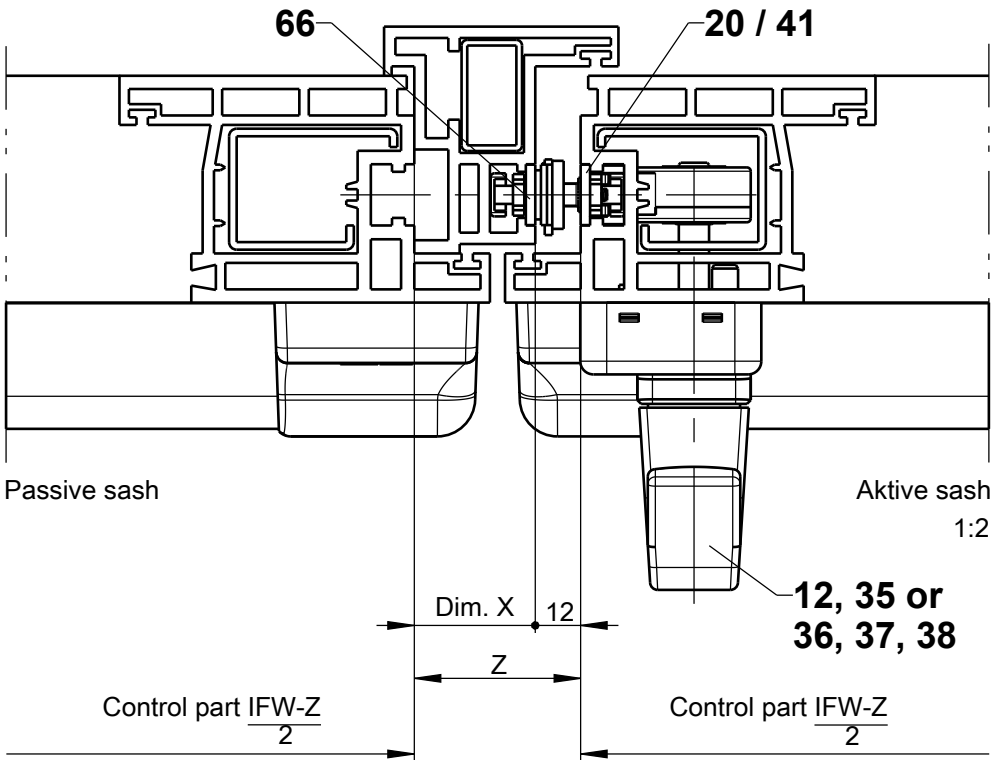
Tilt&Slide hardware GU-966/150 mZ  
Neutral PVC profiles, Axis 9/13 mm

--

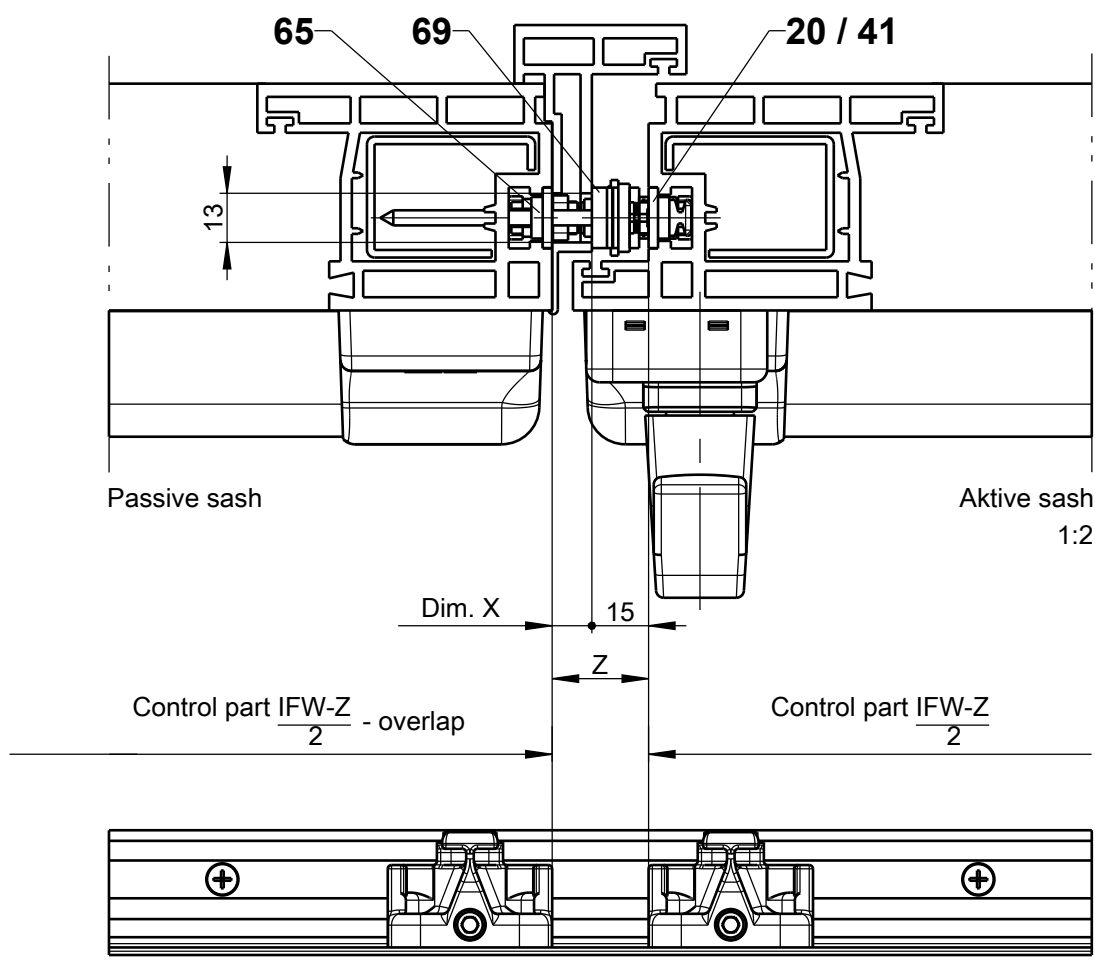
	Release No.	Level	Released		Scale	Modification	Size	
	--				%	4	1	
	Mod. No.	Ver.	--	--				
	G33924	Draft	18.08.2016	KI				
	Replacement for --							Drawing No.
					0-45891-BL-0-EN 45891			



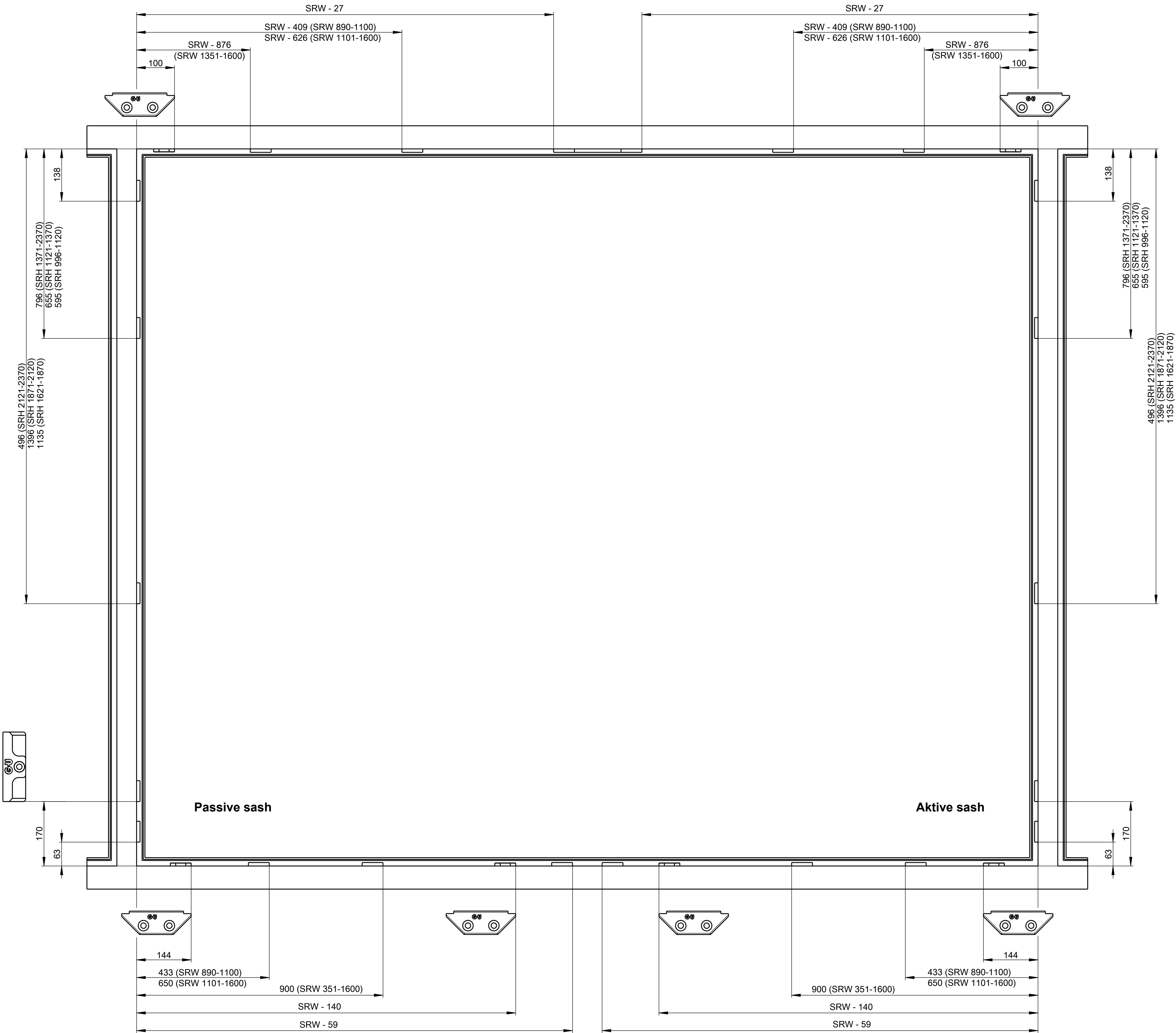
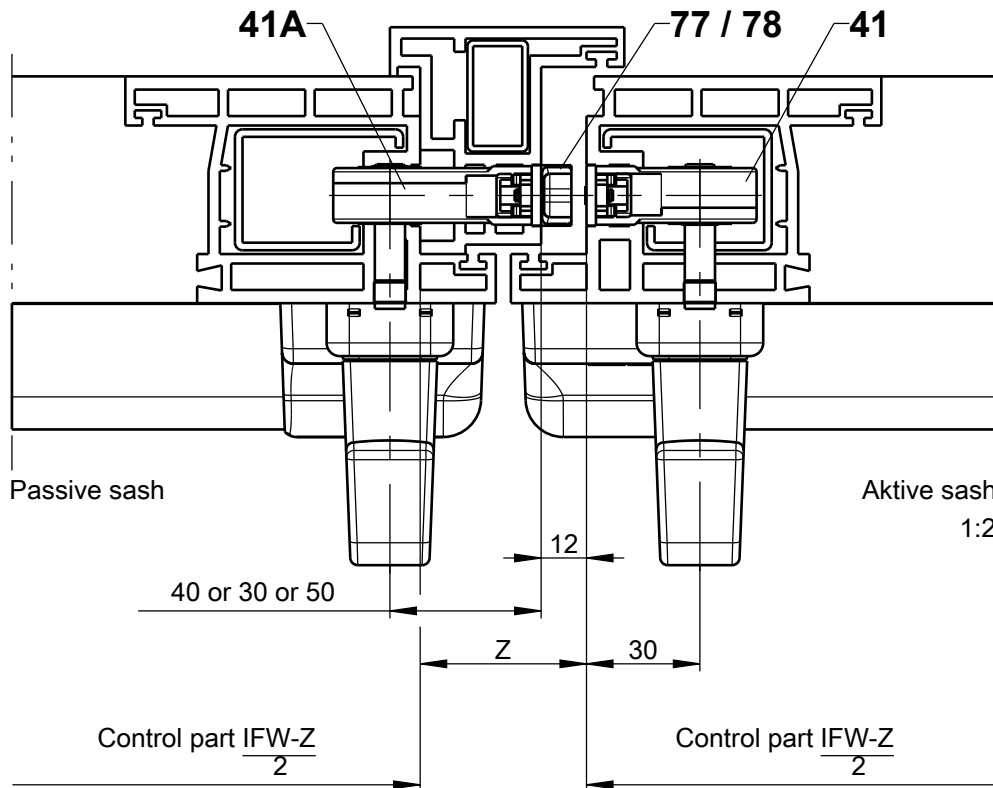
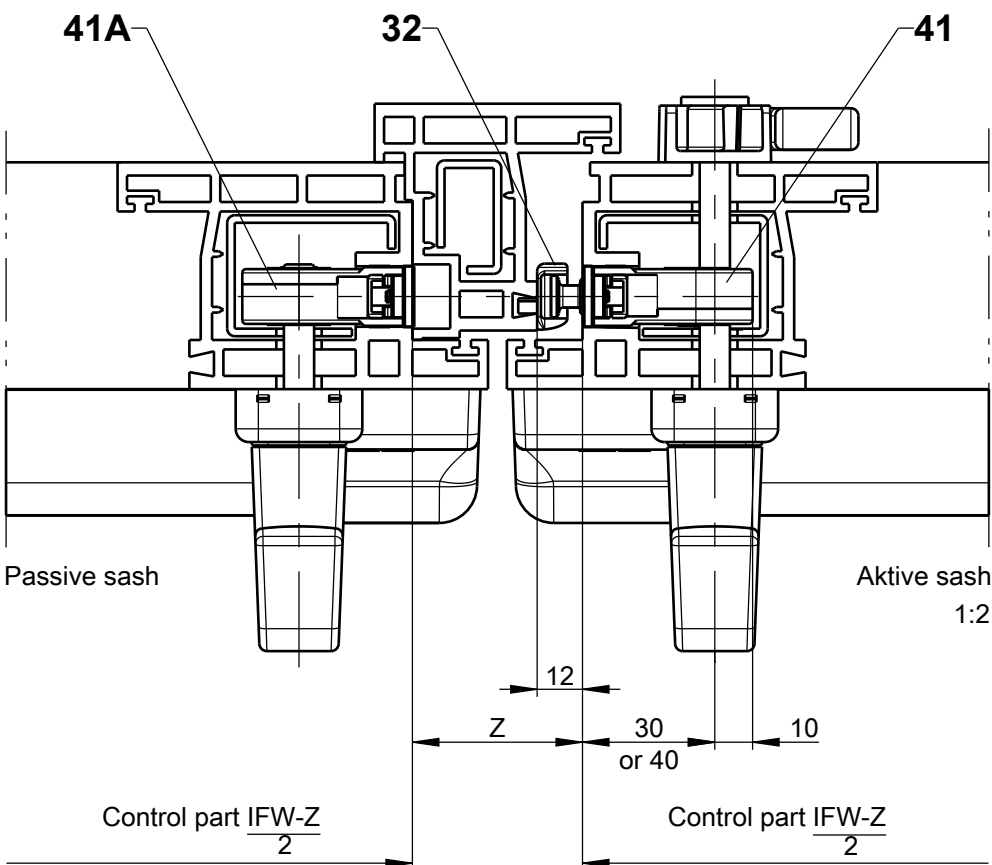
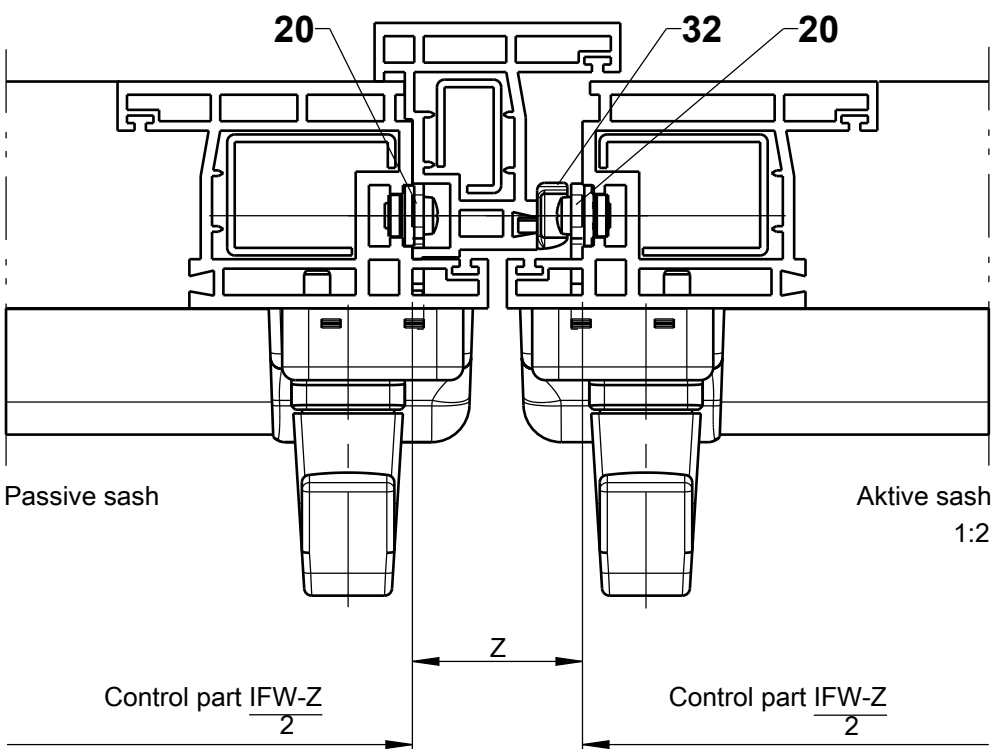
Passive sash with ZH lever-operated gear



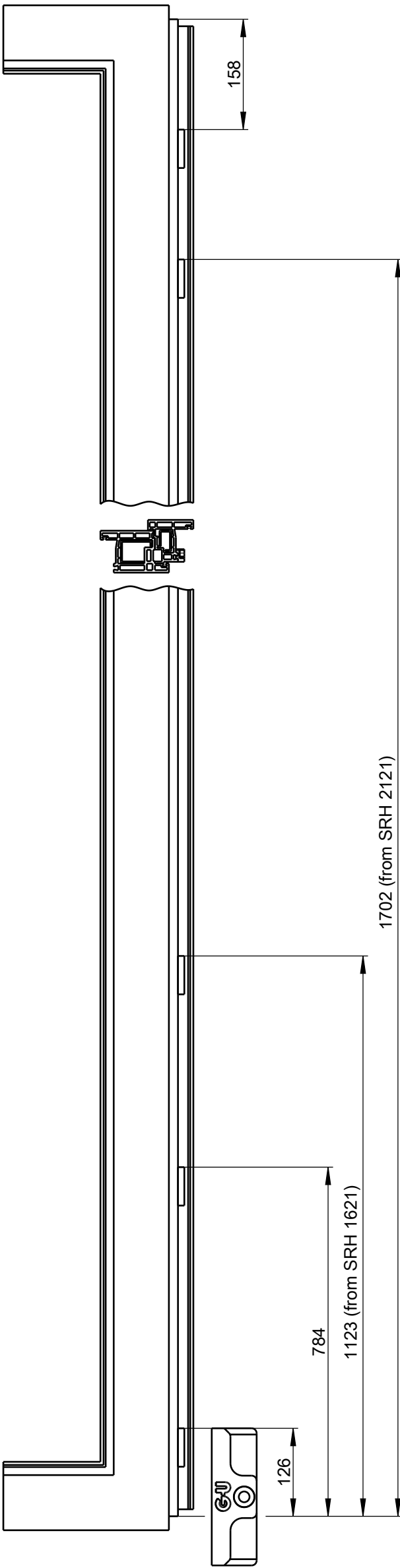
Window with dummy mullion profile and with ZK lever-operated gear



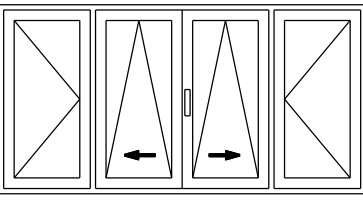
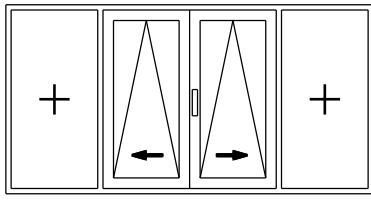
Both sashes with turn handle



Passive sash with false mullion



Pattern C / Sectional views

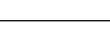


Description

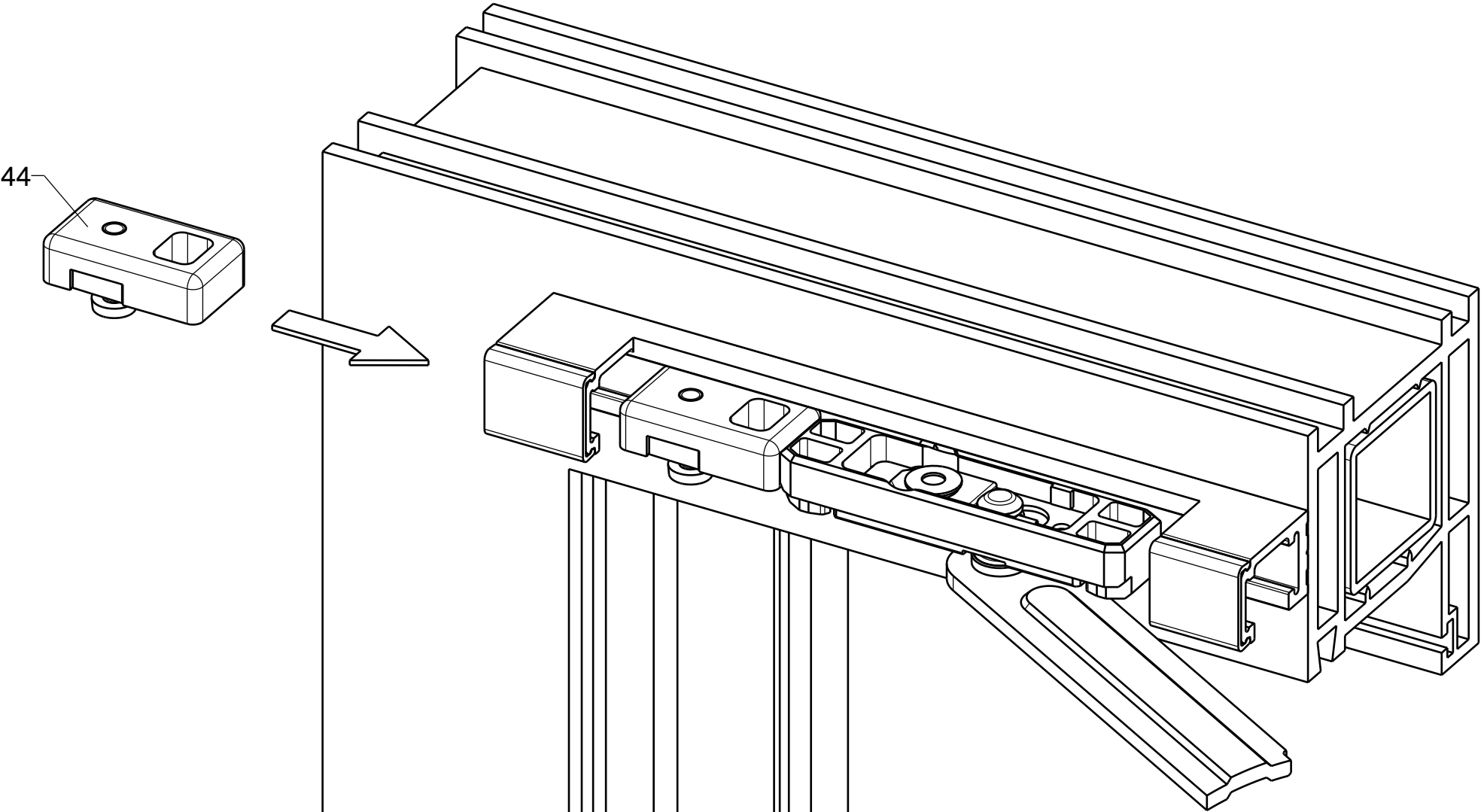
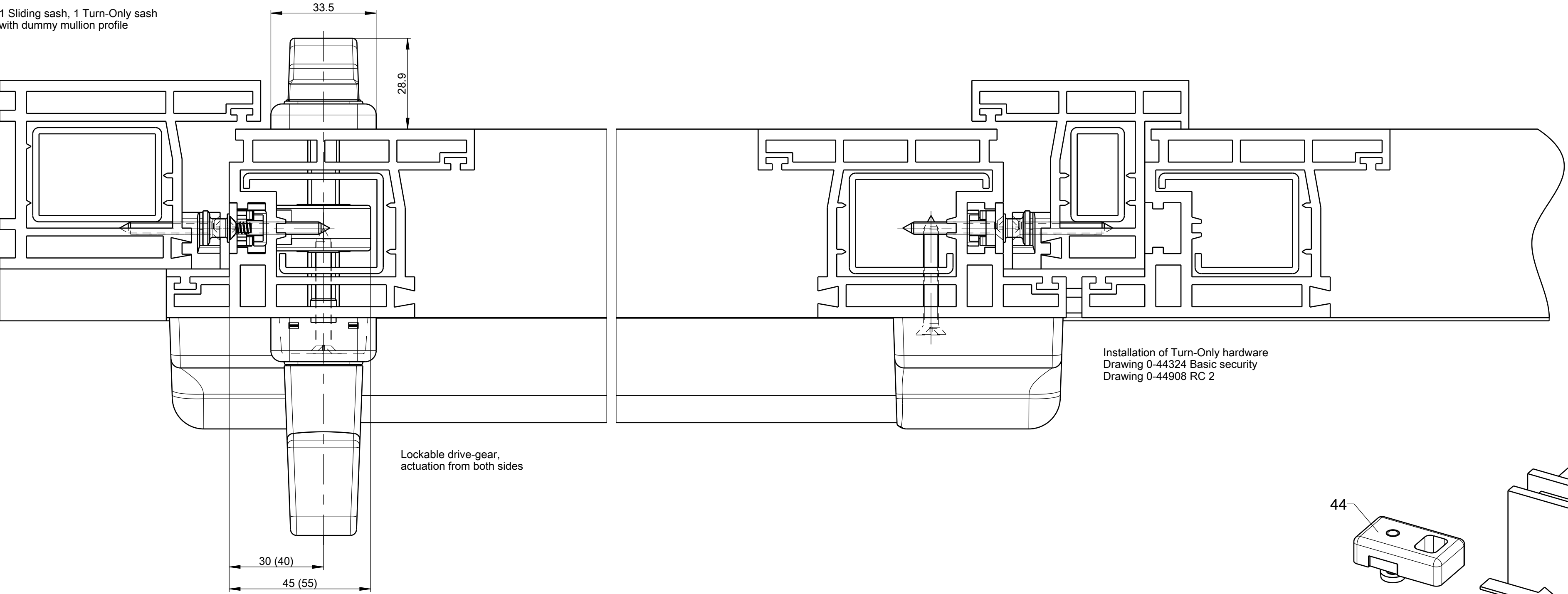
Tilt&Slide hardware GU-966/150 mZ

Neutral PVC profiles, Axis 9/13 mm

--

	Release No.	Level	Released		Scale	Modification	Size
	--						
	Ver.	--	--		%	4	1
	Draft	18.08.2016	KJ				
	Replacement for --						
0-45891-BL-0-EN						Sheet	
						5/8	

Pattern D  
1 Sliding sash, 1 Turn-Only sash  
with dummy mullion profile



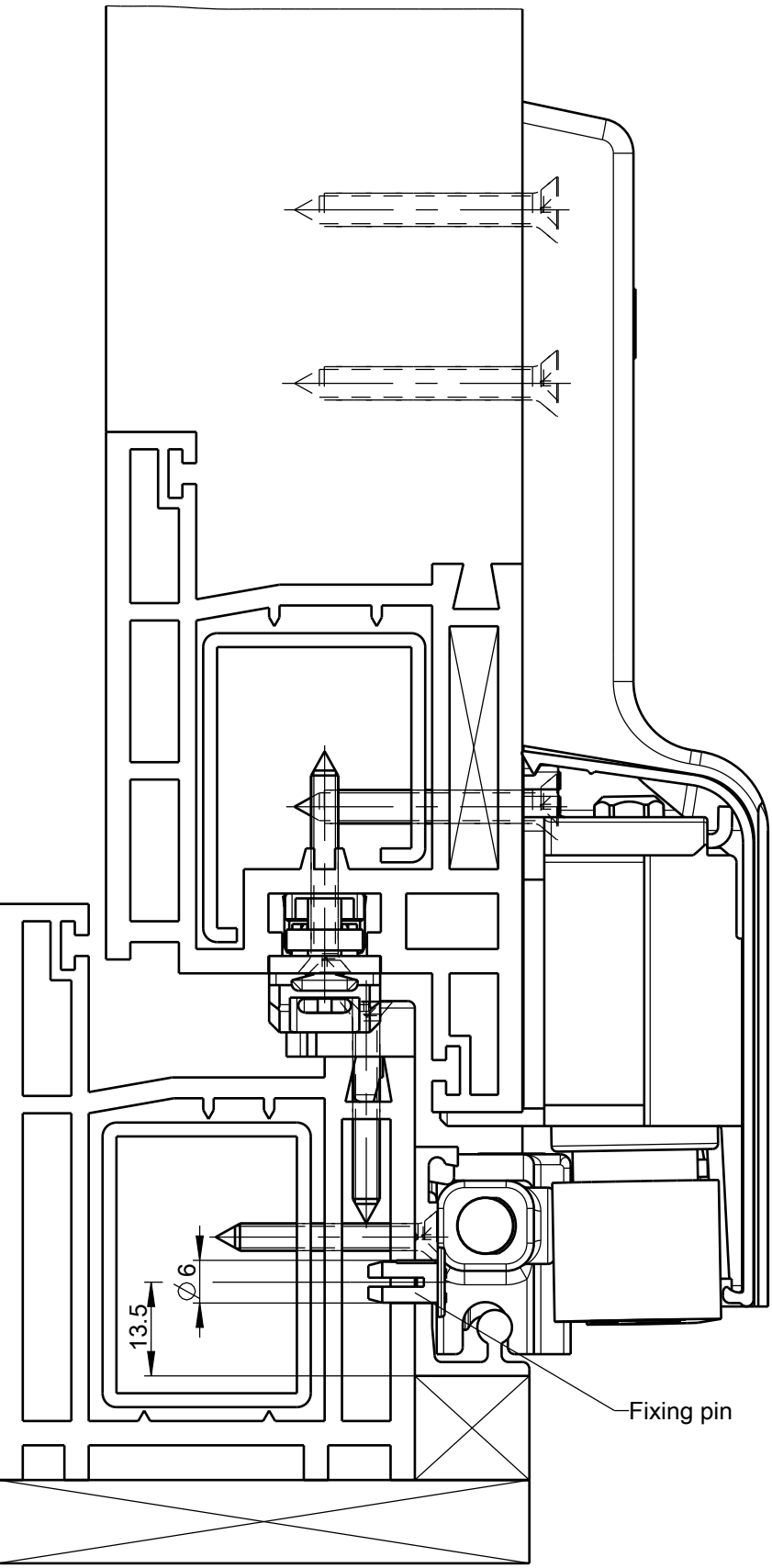
Mounting the fixing pin for pattern D

Place the drilling jig with the bushings on the roller track in a way that it abuts against the control part with the pins resting against the track. Then drill the hole (left or right).

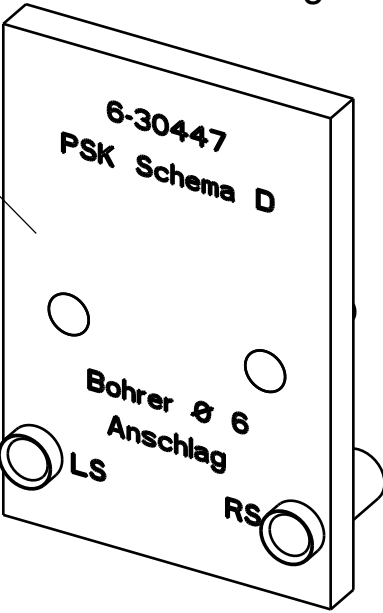
Press the fixing pin into the drill hole. With pattern D, the pin serves as stop for the shiftable control part.

Attention!

T&S buffer (item 44) must be loosened and shifted like the control part (item 3).

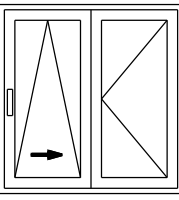


Drilling jig  
6-30447  
Drill Ø6



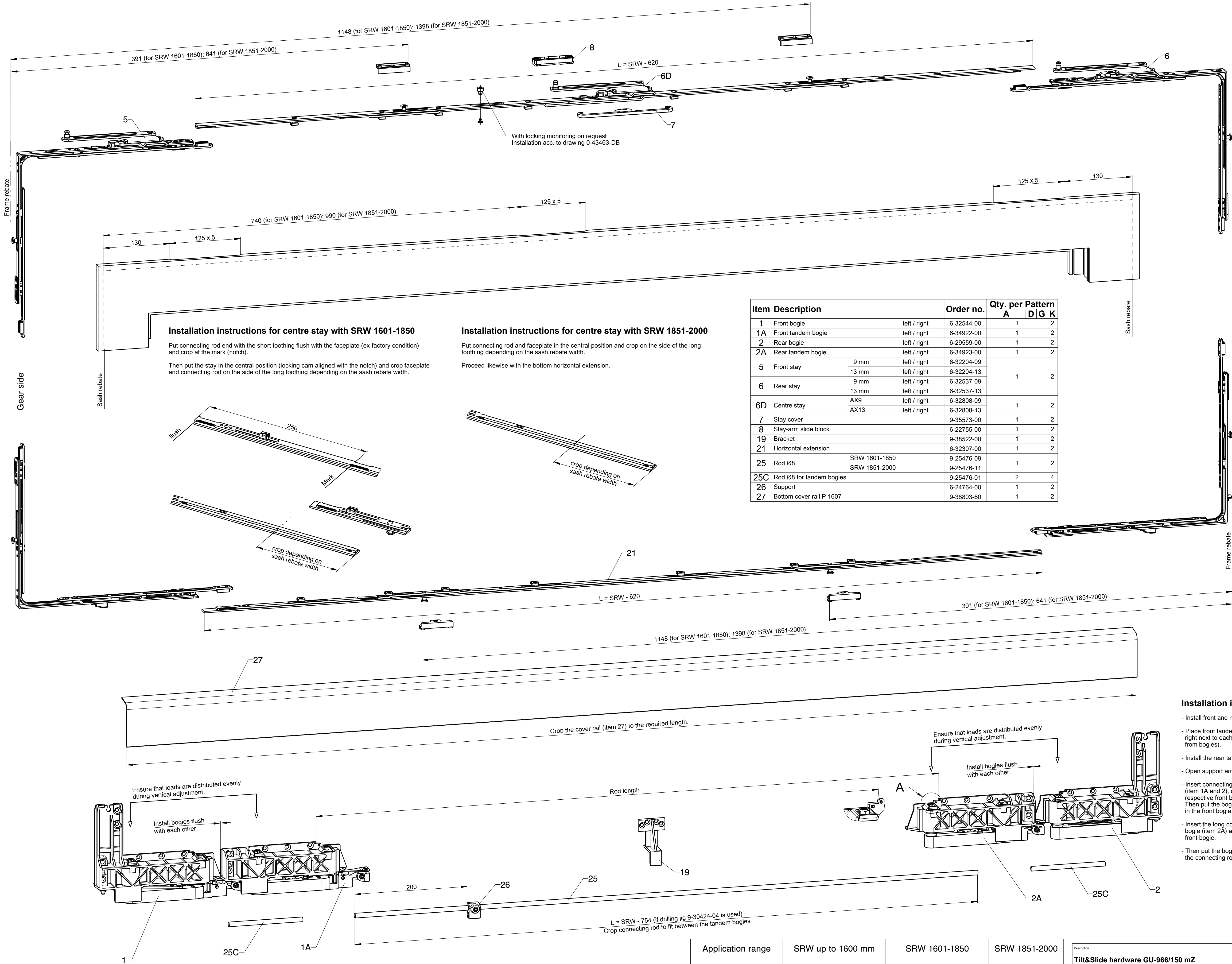
Fixing pin (item 4)

Pattern D / Sectional views



1 Sliding sash, 1 Turn-Only sash  
with dummy mullion profile

Description						
Tilt&Slide hardware GU-966/150 mZ						
Neutral PVC profiles, Axis 9/13 mm						
--						
GU	Release No.	--	Level	Released	Scale	Modification
	Mod. No.	G33924	Ver.	--	%	4
			Draft	18.08.2016	KJ	
	Replacement for --					
0-45891-BL-0-EN						Sheet
6/8						



#### Installation instructions for centre stay with SRW 1601-1850

Put connecting rod end with the short toothing flush with the faceplate (ex-factory condition) and crop at the mark (notch).

Then put the stay in the central position (locking cam aligned with the notch) and crop faceplate and connecting rod on the side of the long toothing depending on the sash rebate width.

#### Installation instructions for centre stay with SRW 1851-2000

Put connecting rod and faceplate in the central position and crop on the side of the long toothing depending on the sash rebate width.

Proceed likewise with the bottom horizontal extension.

Item	Description		Order no.	Qty. per Pattern		
				A	D	G K
1	Front bogie	left / right	6-32544-00	1	2	
1A	Front tandem bogie	left / right	6-34922-00	1	2	
2	Rear bogie	left / right	6-29559-00	1	2	
2A	Rear tandem bogie	left / right	6-34923-00	1	2	
5	Front stay	9 mm left / right	6-32204-09	1	2	
		13 mm left / right	6-32204-13			
6	Rear stay	9 mm left / right	6-32537-09			
		13 mm left / right	6-32537-13			
6D	Centre stay	AX9 left / right	6-32808-09	1	2	
		AX13 left / right	6-32808-13			
7	Stay cover		9-35573-00	1	2	
8	Stay-arm slide block		6-22755-00	1	2	
19	Bracket		9-38522-00	1	2	
21	Horizontal extension		6-32307-00	1	2	
25	Rod Ø8	SRW 1601-1850	9-25476-09	1	2	
		SRW 1851-2000	9-25476-11			
25C	Rod Ø8 for tandem bogies		9-25476-01	2	4	
26	Support		6-24764-00	1	2	
27	Bottom cover rail P 1607		9-38803-60	1	2	

#### Installation instructions for tandem bogies

- Install front and rear bogies (item 1 and 2).
- Place front tandem bogie (item 1A) and front bogie (item 1) right next to each other. Pre-drill the fixing holes (copy holes from bogies).
- Install the rear tandem bogie (item 2A) accordingly.
- Open support arms to install the rod.
- Insert connecting rods (item 25C) in the rear bogie, each (item 1A and 2), clamp them tight and insert them in the respective front bogie. Then put the bogies in the closed position and lock the rods in the front bogie, each.
- Insert the long connecting rod (item 25) in the rear tandem bogie (item 2A) and clamp it tight, then insert it in the front bogie.
- Then put the bogies in the closed position again and lock the connecting rod in the front bogie.

#### Tandem hardware 200 kg


Application range	SRW up to 1600 mm	SRW 1601-1850	SRW 1851-2000
Up to 150 kg	GU-966/150, Standard version	GU-966/150, Standard version	Centre stay
151-180 kg	Tandem bogies	Tandem bogies	Tandem bogies set Centre stay
181-200 kg	--	Tandem bogies set Centre stay	Tandem bogies set Centre stay

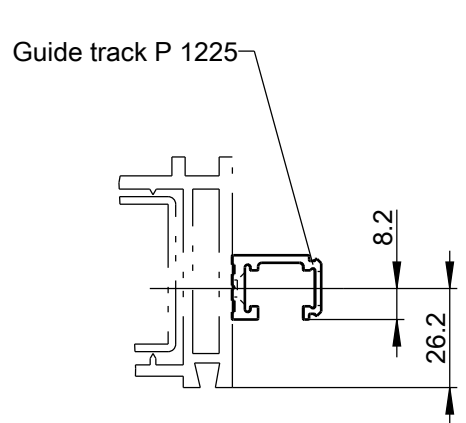
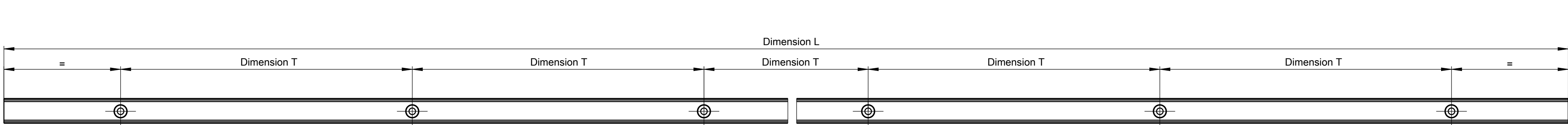
Description

Tilt&Slide hardware GU-966/150 mZ

Neutral PVC profiles, Axis 9/13 mm

--

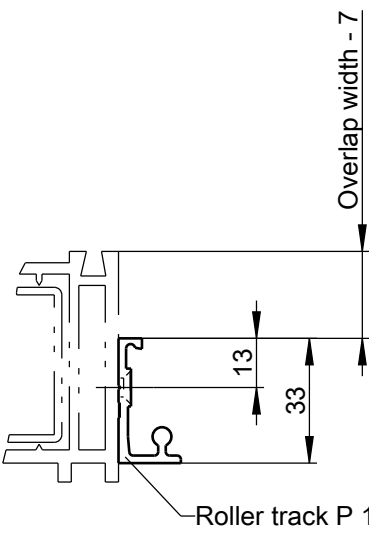
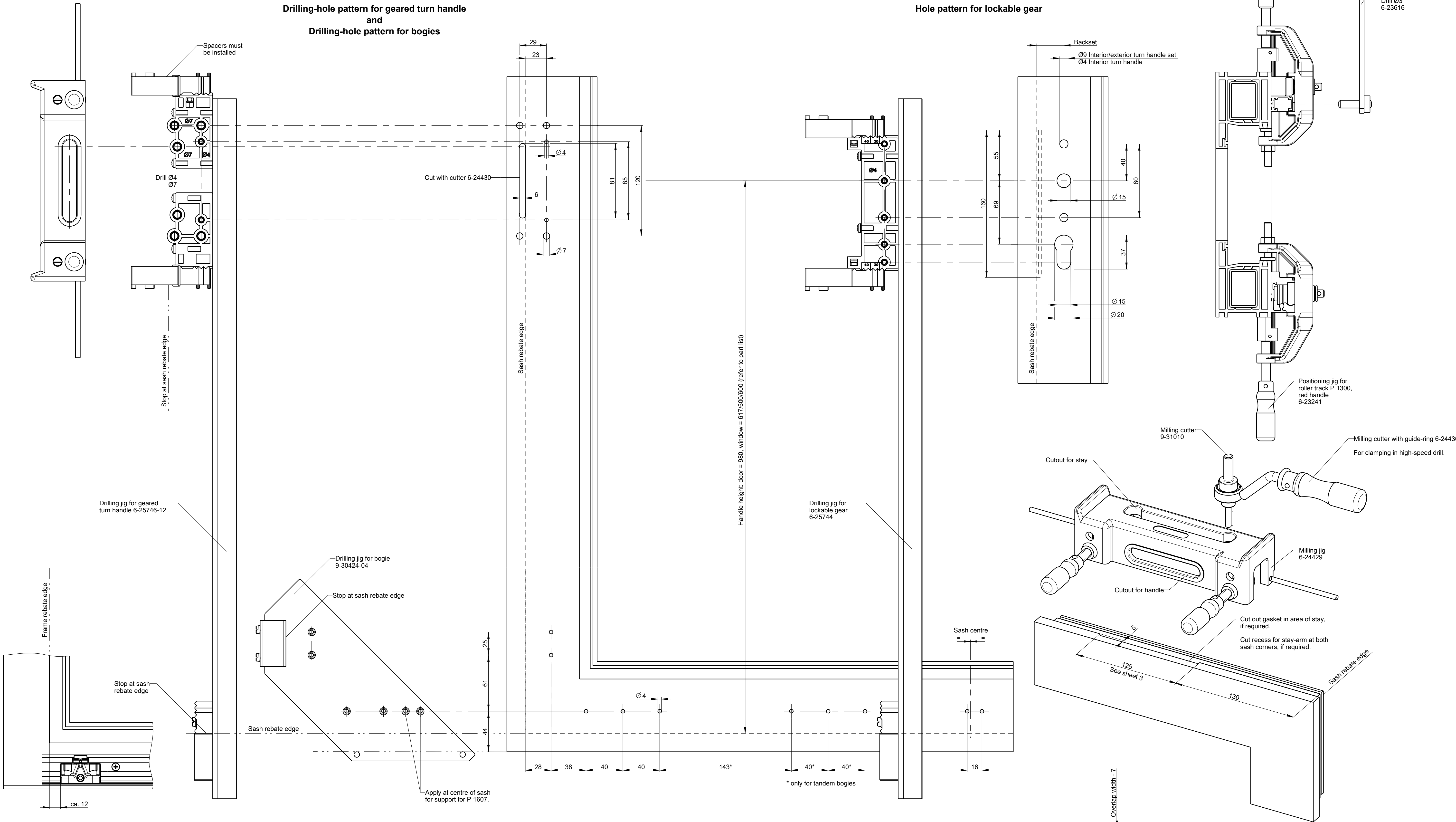
	Release No.	Level	Released		Scale	Modification	Size
	--						
	Ver. no	Ver.	--	--	%		
	G33924	Draft	18.08.2016	KI		Drawing No.	Sheet
	Replacement for --					0-45891-BL-0-EN	7/8



Size	SRW	Dim. L	Number of screw holes	Dimension T (hole distance)	Application
20	720-850	1960	10	200	Guide track P 1225
25	851-1100	2460	13		
30	1101-1350	2960	15		
35	1351-1600	3460	18		Roller track P 1300
67	Stock length	6700	34		

Drilling-hole pattern for geared turn handle  
and  
Drilling-hole pattern for bogies

Hole pattern for lockable gear



Drilling and milling jigs

Description <b>Tilt&amp;Slide hardware GU-966/150 mZ</b> <b>Neutral PVC profiles, Axis 9/13 mm</b> --					
Release No. --	Level Ver	Released --	Scale %	Modification 4	Size 1
Art. No. G33924	Draft	18.08.2016	KJ	Drawing No. <b>0-45891-BL-0-EN</b>	Sheet 8/8
Replacement for --					