



WINDOW TECHNOLOGY
DOOR TECHNOLOGY
AUTOMATIC ENTRANCE SYSTEMS
BUILDING MANAGEMENT SYSTEMS



WINDOW TECHNOLOGY – ORDER CATALOGUE

The Tilt&Slide hardware range (oZ) with the ALU-JET 06 central locking system

Edition 03/2024

Securing technology for you



The Gretsch-Unitas Group

Opening, moving, closing, securing – true to its motto "Securing technology for you", Gretsch-Unitas group provides groundbreaking solutions for window and door technology, automatic entrance systems and building management systems. With its system brands, the group delivers solutions for burglar inhibition on doors and windows, for barrier-free building, for doors in escape and rescue routes, extending to individual facade solutions for projects.



Gretsch-Unitas GmbH Baubeschläge



GU in Ditzingen is the headquarters of the group, development, administration and the production of modern architectural hardware for window and door technology. Apart from different flexible assembly departments, the production site comprises a high-tech punching and galvanising facility.

BKS GmbH



BKS manufactures mechanical and electronic locking cylinders, locks, locking systems and panic locks for escape and rescue routes. Harmonised mechanical and electronic system solutions are available for access control.

FERCO International S.A.S.



Ferco is the largest production site for window hardware in France. As a subsidiary of the Gretsch-Unitas group, Ferco also offers customer support and distribution in France for all products of the group.



GU Automatic



GU Automatic offers innovative, secure and reliable solutions for automatic entrance systems and automatic door systems, revolving doors, all-glass sliding walls, security curved sliding doors and controlled physical access.

ela-soft

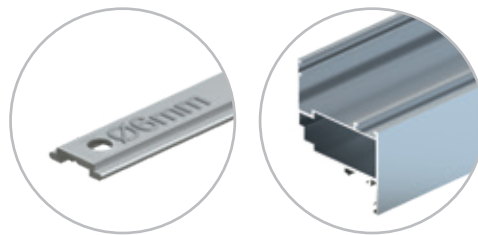


The successful GEMOS facility management and organisation system was designed by ela-soft, one of the market and technology leaders in the building technology branch.

Securing technology for you

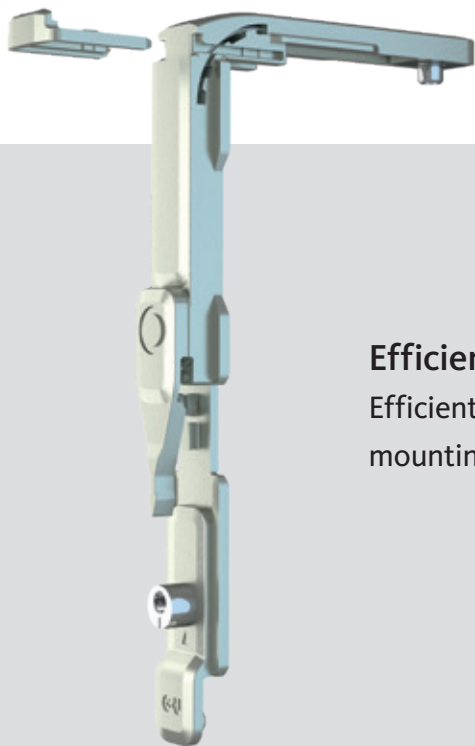


ALU-JET 06 central locking system



Application range:

- Suitable for all profile systems with 15/20 Euro-groove and 10/14, 12/15 or 14/18 frame groove
- For all window forms and opening types, such as Tilt&Turn, Tilt-First, Turn-Only, Tilt-Only, Horizontal-Pivot, Vertical Pivot, T&S oZ, P-S, F&S, Projecting Top-Hung, Parallel-Slide lightweight hardware (PSL), PSP, SHEV and special constructions
- 11.5 mm clearance
- 17.5 mm overlap width
- 7–12 mm overlap height
- 10 mm axis



Efficient toolless mounting

Efficient installation thanks to toolless mounting of corner-drives

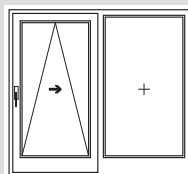
Benefits

- Efficient installation
- Toolless mounting of corner-drives
- Fixed connecting rod lengths on hinge side and bottom sash side (prefabrication possible)
- Suitable for all GU opening systems
- All components are non-handed
- Mishandling device integrated in the corner-drive, but still also available as a separate component to be fixed to the handle

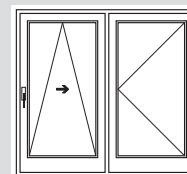


Sash configuration according to patterns

Pattern A with mullion

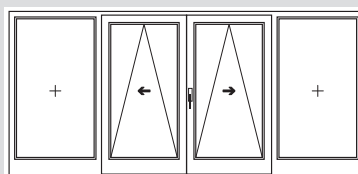


1 sliding sash / 1 fixed glazing
Drawing: left version

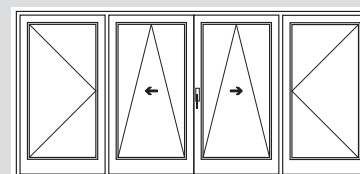


1 sliding sash / 1 Turn-Only sash [1]
Drawing: left version

Pattern C with mullion

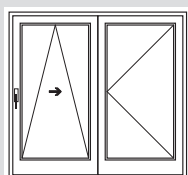


2 sliding sashes / 2 fixed glazings
Drawing: active sash, left version



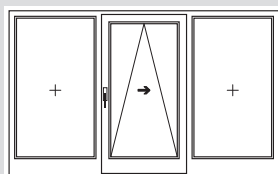
2 sliding sash / 2 Turn-Only sash [1]
Drawing: active sash, left version

Pattern D without mullion

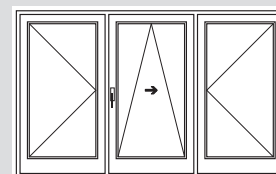


1 sliding sash / 1 Turn-Only sash [2]
Drawing: left version

Pattern G with mullion

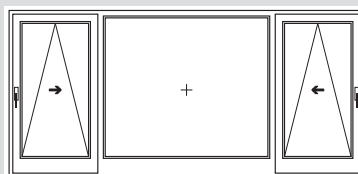


1 sliding sashes / 2 fixed glazings
Drawing: left version



1 sliding sash / 2 Turn-Only sash [1]
Drawing: left version

Pattern K with mullion



2 sliding sash / 1 fixed glazing
Drawing: left version and right version

[1] Turn-Only sash pattern A / C / G:
version with ALU-JET 06 Turn-Only sash hardware

[2] Turn-Only sash pattern D:
version with ALU-JET lever-operated gear

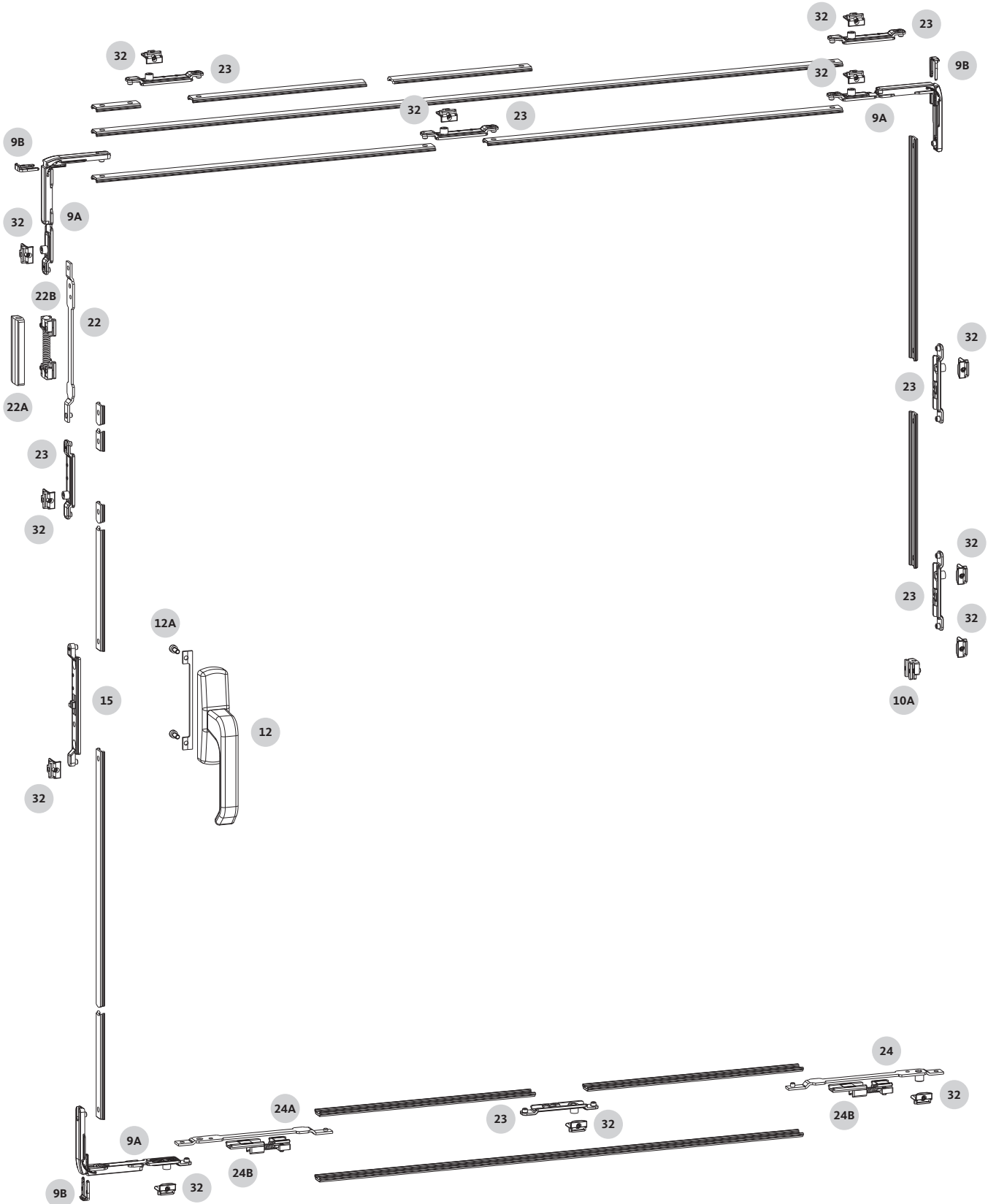
For the corresponding hardware configurations, please refer to our order catalogue "The ALU-JET 06 Tilt&Turn hardware range" (WP00083-00-1-1).

Application ranges

Designation	Sash width SW [mm]	Sash height SH [mm]	Sash weight SW [kg]
ALU-JET 06 central locking system with T&S GU-968/150 oZ	640-1600	730-2800	up to 130

Overviews of hardware sets

T&S GU-968/150 oZ with geared turn handle





Item	Description	Order number	Pattern				
			A	C	D	G	K
	Set of T&S adapters oZ	K-20288-00-0-0 K-20288-00-0-1 K-20288-00-0-5	1	2	1	1	2
10A	Anti-jemmy device	-	1	2	1	1	2
22	Spring element GU 968/150	-	1	2	1	1	2
22B	Spring element	-	1	2	1	1	2
24	Rear adapter	-	1	2	1	1	2
24A	Front adapter	-	1	2	1	1	2
24B	Adapter	-	1	2	1	1	2

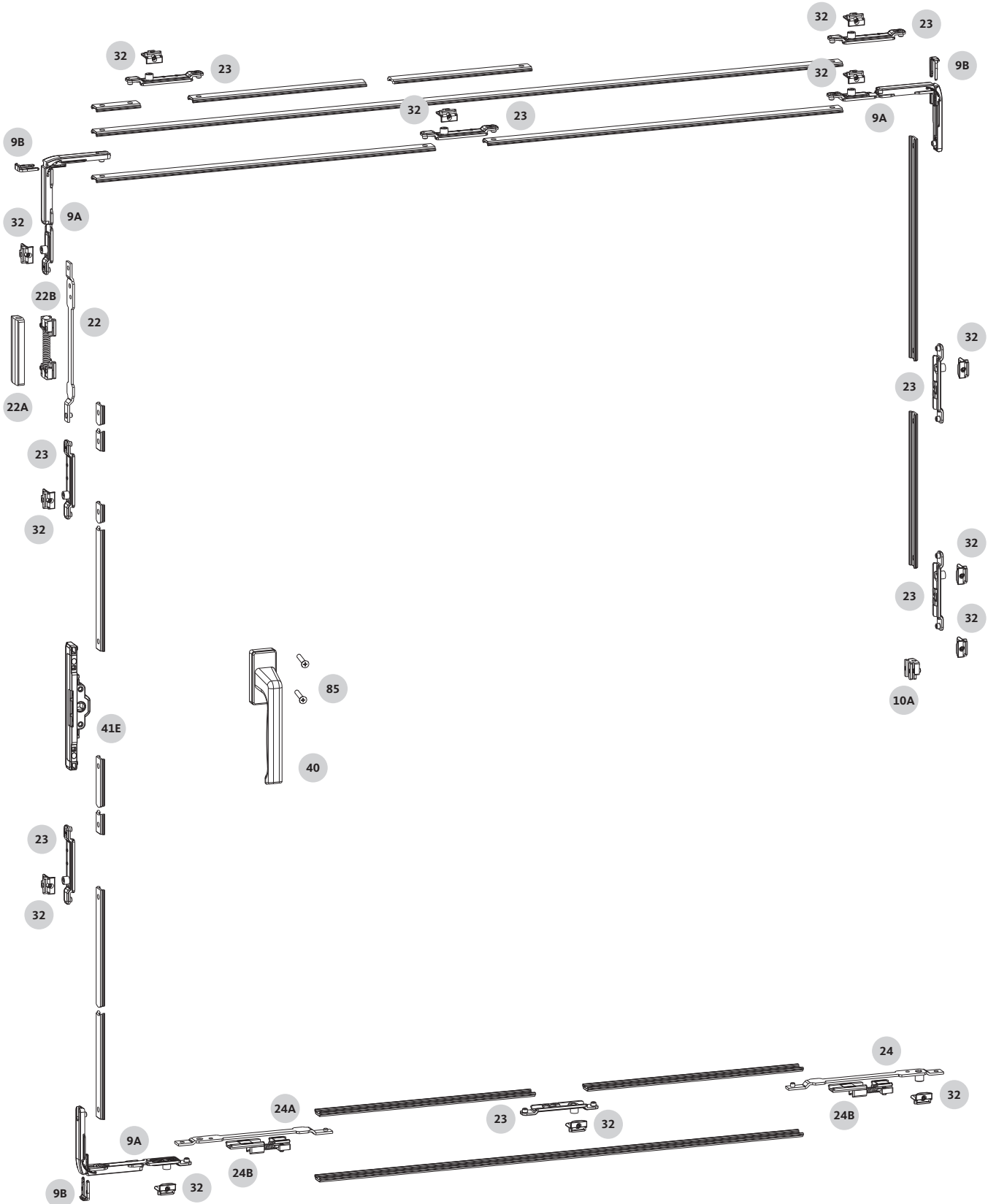
Item	Description	SW [mm]	Order number	Pattern				
				A	C	D	G	K
	Corner-drive without M.D.	-	K-19774-06-0-1	-	-	-	-	-
9A	Corner-drive without M.D.	up to 1200	-	2	4	2	2	4
		from 1201	-	3	6	3	3	6
9B	Clamping bracket	up to 1200	-	2	4	2	2	4
		from 1201	-	3	6	3	3	6

Item	Description	SW [kg]	Order number	Pattern				
				A	C	D	G	K
12	SPACIO geared turn handle	HP 84/98	G-46551-00-0-1	1	2	1	1	2
		HP 96/104	G-46551-96-0-1	1	2	1	1	2
12A	Fixing plate for item 12	-	9-41506-00-0-1	1	2	1	1	2
15	Dog	-	6-30984-06-0-1	1	2	1	1	2

Item	Description	SW [mm]	SH [mm]	Order number	Pattern				
					A	C	D	G	K
22A	Cover cap	-	-	9-32227-01-0-1	1	2	1	1	2
23	ALU-JET 06 connector with cam	640-1200	730-1200	6-39396-06-0-1	1	4	1	1	2
			1201-1960		1	4	1	1	2
			1961-2800		3	7	3	3	6
		1201-1600	730-1960		3	8	3	3	6
			1961-2800		5	11	5	5	10
			730-1200		4	8	4	4	8
32	ALU-JET 10 - Striker (A=2.0) ALU-JET 10 - Striker (A=1.5)	640-1200	1201-1960	6-37261-01-0-1	6	12	6	6	12
			1961-2800		8	15	8	8	16
			730-1960		8	16	8	8	16
		1201-1600	1961-2800		10	19	10	10	20
			730-1200		4	8	4	4	8
			1201-1960		6	12	6	6	12
	for A=1.5	640-1200	1961-2800	6-37261-02-0-1	8	15	8	8	16
			730-1960		8	16	8	8	16
			1961-2800		10	19	10	10	20
		1201-1600	730-1200		4	8	4	4	8
			1201-1960		6	12	6	6	12
			1961-2800		8	15	8	8	16

Overviews of hardware sets

T&S GU-968/150 oZ with insertable gear w/o M.D.



Overviews of hardware sets

T&S GU-968/150 oZ with insertable gear w/o M.D.



Item	Description	Order number	Pattern				
			A	C	D	G	K
	Set of T&S adapters oZ	K-20288-00-0-0 K-20288-00-0-1 K-20288-00-0-5	1	2	1	1	2
10A	Anti-jemmy device	-	1	2	1	1	2
22	Spring element GU 968/150	-	1	2	1	1	2
22B	Spring element	-	1	2	1	1	2
24	Rear adapter	-	1	2	1	1	2
24A	Front adapter	-	1	2	1	1	2
24B	Adapter	-	1	2	1	1	2

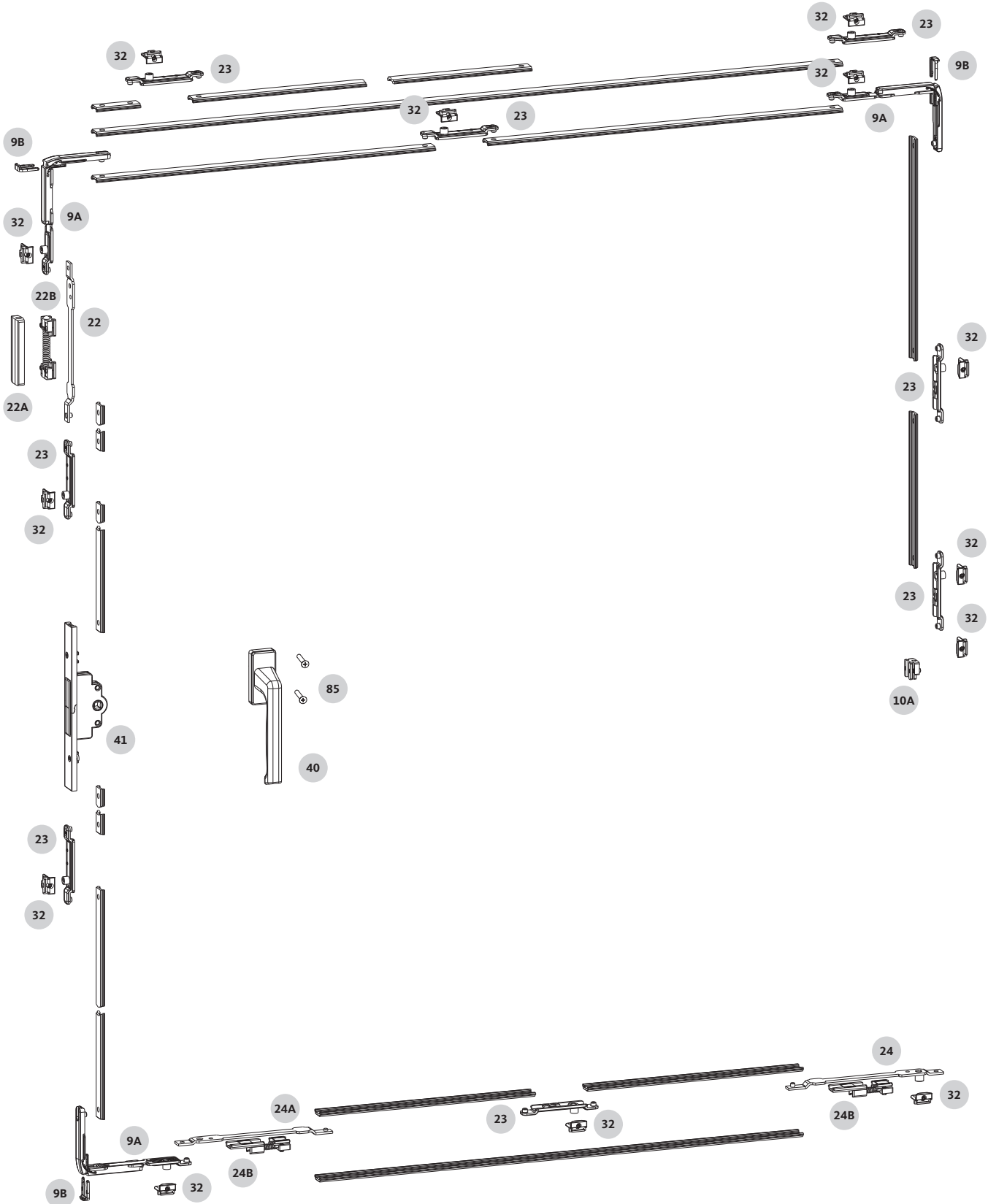
Item	Description	SW [mm]	Order number	Pattern				
				A	C	D	G	K
	Corner-drive without M.D.	-	K-19774-06-0-1	-	-	-	-	-
9A	Corner-drive without M.D.	up to 1200	-	2	4	2	2	4
		from 1201	-	3	6	3	3	6
9B	Clamping bracket	up to 1200	-	2	4	2	2	4
		from 1201	-	3	6	3	3	6

Item	Description	Order number	Pattern				
			A	C	D	G	K
40	DIRIGENT-F turn handle	6-28072-25-0-1	1	2	1	1	2
41E	Insertable gear w/o M.D.	6-39385-06-0-1	1	2	1	1	2
85	Countersunk screw M5x30	9-13255-30-0-1	2	4	2	2	4

Item	Description	SW [mm]	SH [mm]	Order number	Pattern				
					A	C	D	G	K
22A	Cover cap	-	-	9-32227-01-0-1	1	2	1	1	2
23	ALU-JET 06 connector with cam	640-1200	730-1200	6-39396-06-0-1	1	4	1	1	2
			1201-1960		1	5	1	1	4
			1961-2800		4	8	4	4	8
		1201-1600	730-1960		4	9	4	4	8
			1961-2800		6	12	6	6	12
			730-1200		4	8	4	4	8
32	ALU-JET 10 - Striker (A=2.0)	640-1200	1201-1960	6-37261-01-0-1	6	12	6	6	12
			1961-2800		8	15	8	8	16
			730-1960		8	16	8	8	16
		1201-1600	1961-2800		10	19	10	10	20
			730-1200		4	8	4	4	8
			1201-1960		6	12	6	6	12
	ALU-JET 10 - Striker (A=1.5)	640-1200	1961-2800	6-37261-02-0-1	8	15	8	8	16
			730-1960		8	16	8	8	16
			1201-1600		10	19	10	10	20
		1201-1600	730-1200		4	8	4	4	8
			1201-1960		6	12	6	6	12
			1961-2800		8	15	8	8	16

Overviews of hardware sets

T&S GU-968/150 oZ with insertable gear



Overviews of hardware sets

T&S GU-968/150 oZ with insertable gear



Item	Description	Order number	Pattern				
			A	C	D	G	K
	Set of T&S adapters oZ	K-20288-00-0-0 K-20288-00-0-1 K-20288-00-0-5	1	2	1	1	2
10A	Anti-jemmy device	-	1	2	1	1	2
22	Spring element GU 968/150	-	1	2	1	1	2
22B	Spring element	-	1	2	1	1	2
24	Rear adapter	-	1	2	1	1	2
24A	Front adapter	-	1	2	1	1	2
24B	Adapter	-	1	2	1	1	2

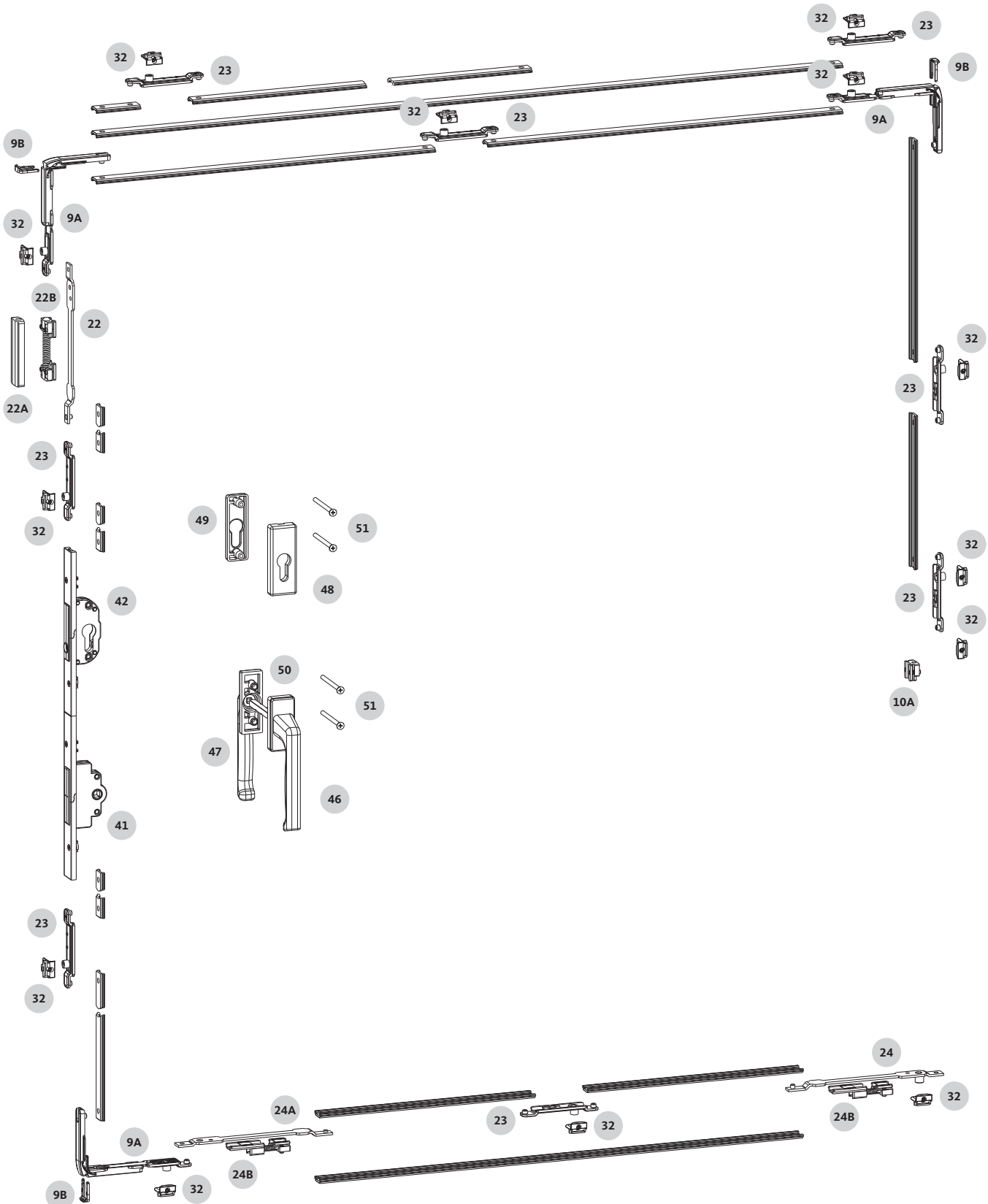
Item	Description	SW [mm]	Order number	Pattern				
				A	C	D	G	K
	Corner-drive without M.D.	-	K-19774-06-0-1	-	-	-	-	-
9A	Corner-drive without M.D.	up to 1200	-	2	4	2	2	4
		from 1201	-	3	6	3	3	6
9B	Clamping bracket	up to 1200	-	2	4	2	2	4
		from 1201	-	3	6	3	3	6

Item	Description	Order number	Pattern				
			A	C	D	G	K
40	DIRIGENT-F turn handle	6-28072-25-0-1	1	2	1	1	2
41	Insertable gear, sizes 25/30/35/40/45/50	6-25916-25-0-1	1	2	1	1	2
85	Countersunk screw M5x30	9-13255-30-0-1	2	4	2	2	4

Item	Description	SW [mm]	SH [mm]	Order number	Pattern				
					A	C	D	G	K
22A	Cover cap	-	-	9-32227-01-0-1	1	2	1	1	2
23	ALU-JET 06 connector with cam	640-1200	730-1200	6-39396-06-0-1	1	4	1	1	2
			1201-1960		1	5	1	1	4
			1961-2800		4	8	4	4	8
		1201-1600	730-1960		4	9	4	4	8
			1961-2800		6	12	6	6	12
			730-1200		4	8	4	4	8
32	ALU-JET 10 - Striker (A=2.0)	640-1200	1201-1960	6-37261-01-0-1	6	12	6	6	12
			1961-2800		8	15	8	8	16
			730-1960		8	16	8	8	16
		1201-1600	1961-2800		10	19	10	10	20
			730-1200		4	8	4	4	8
			1201-1960		6	12	6	6	12
	ALU-JET 10 - Striker (A=1.5)	640-1200	1961-2800	6-37261-02-0-1	8	15	8	8	16
			730-1960		8	16	8	8	16
			1961-2800		10	19	10	10	20
		1201-1600	730-1200		4	8	4	4	8
			1201-1960		6	12	6	6	12
			1961-2800		8	15	8	8	16

Overviews of hardware sets

T&S GU-968/150 oZ with insertable gear and interior/exterior turn handle set



Overviews of hardware sets

T&S GU-968/150 oZ with insertable gear and interior/exterior turn handle set



Item	Description	Order number	Pattern				
			A	C	D	G	K
	Set of T&S adapters oZ	K-20288-00-0-0 K-20288-00-0-1 K-20288-00-0-5	1	2	1	1	2
10A	Anti-jemmy device	-	1	2	1	1	2
22	Spring element GU 968/150	-	1	2	1	1	2
22B	Spring element	-	1	2	1	1	2
24	Rear adapter	-	1	2	1	1	2
24A	Front adapter	-	1	2	1	1	2
24B	Adapter	-	1	2	1	1	2

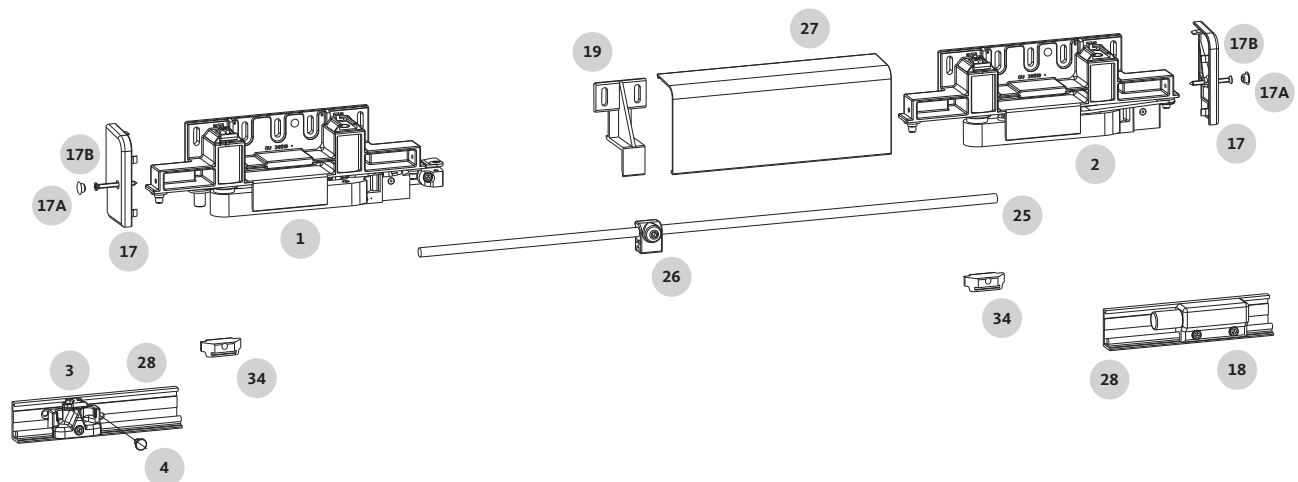
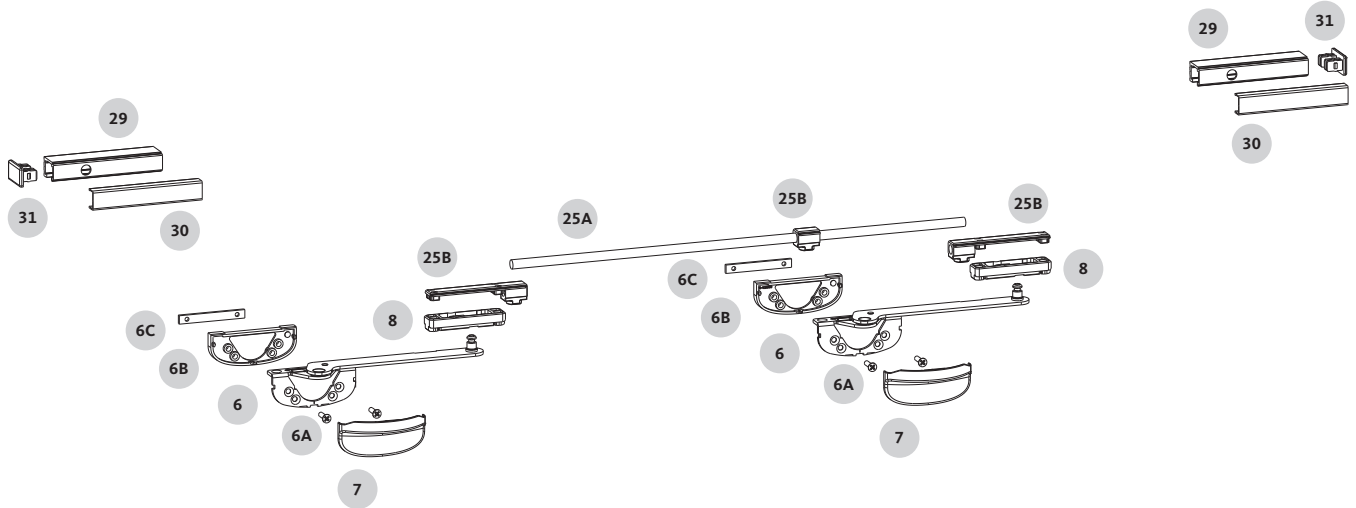
Item	Description	SW [mm]	Order number	Pattern				
				A	C	D	G	K
	Corner-drive without M.D.	-	K-19774-06-0-1	-	-	-	-	-
9A	Corner-drive without M.D.	up to 1200	-	2	4	2	2	4
		from 1201	-	3	6	3	3	6
9B	Clamping bracket	up to 1200	-	2	4	2	2	4
		from 1201	-	3	6	3	3	6

Item	Description	Length [mm]	ST [mm]	Order number	Pattern				
					A	C	D	G	K
41	Insertable gear, sizes 25/30/35/40/45/50			6-25916-25-0-1	1	2	1	1	2
42	Lock with profile cylinder, sizes 25/30/35/40/45/50			6-25918-25-0-1	1	2	1	1	2
46	DIRIGENT-F turn handle (without spindle)			6-28072-25-0-1	1	2	1	1	2
47	DIRIGENT-F turn handle (exterior)			6-25223-00-0-1	1	2	1	1	2
48	PC rosette inside			K-17205-02-0-1	1	2	1	1	2
49	PC rosette outside			9-43605-02-0-1	1	2	1	1	2
50	Square spindle	118	56-70	9-26874-56-0-1	1	2	1	1	2
		131	71-80	9-26874-69-0-1	1	2	1	1	2
51	Countersunk screw	M5 x 60	51-60	9-13255-60-0-1	4	8	4	4	8
		M5 x 70	61-70	9-13255-70-0-1	4	8	4	4	8
		M5 x 80	71-80	9-13255-80-0-1	4	8	4	4	8

Item	Description	SW [mm]	SH [mm]	Order number	Pattern				
					A	C	D	G	K
22A	Cover cap	-	-	9-32227-01-0-1	1	2	1	1	2
23	ALU-JET 06 connector with cam	640-1200	730-1200	6-39396-06-0-1	1	4	1	1	2
			1201-1960		1	5	1	1	4
		1201-1600	1961-2800		4	8	4	4	8
			730-1960		4	9	4	4	8
32	ALU-JET 10 - Striker (A=2.0) ALU-JET 10 - Striker (A=1.5)	640-1200	730-1200	6-37261-01-0-1	4	8	4	4	8
			1201-1960		6	12	6	6	12
		1201-1600	1961-2800		8	15	8	8	16
			730-1960		8	16	8	8	16
		640-1200	1961-2800	10	19	10	10	20	
			730-1200	4	8	4	4	8	
				1201-1960	6	12	6	6	12
			1961-2800	8	15	8	8	16	
				730-1960	8	16	8	8	16
			1961-2800	10	19	10	10	20	

Tilt&Slide hardware GU-968/150 oZ

Bogies and profiles





Item	Description	Order number	Pattern					
			A	C	D	G	K	
	Set of T&S bogies GU-968/150	DIN LH	K-15278-00-L-0	1	2	1	1	2
		DIN RH	K-15278-00-R-0	1	2	1	1	2
1	Front bogie	DIN LH	-	1	2	1	1	2
		DIN RH	-	1	2	1	1	2
2	Rear bogie	DIN LH	-	1	2	1	1	2
		DIN RH	-	1	2	1	1	2

Item	Description	SW [mm]	Length [mm]	Order number	Pattern				
					A	C	D	G	K
	Set of GU-968/150 T&S profiles	851-1100	-	K-15279-25-0-1	1	2	1	1	2
		1101-1350	-	K-15279-30-0-1	1	2	1	1	2
		1351-1600	-	K-15279-35-0-1	1	2	1	1	2
25	Rod Ø 8	600-850	600	-	1	2	1	1	2
		851-1100	850	-	1	2	1	1	2
		1101-1350	1100	-	1	2	1	1	2
		1351-1600	1350	-	1	2	1	1	2
25A	Rod Ø 8 from 1200 mm sash width for Item 25B (same lengths as Item 25)			-	1	2	1	1	2
27	P 1608 cover rail	600-850	865	-	1	2	1	1	2
		851-1100	1115	-	1	2	1	1	2
		1101-1350	1365	-	1	2	1	1	2
		1351-1600	1615	-	1	2	1	1	2
28	P 1300 roller track			-	1	2	1	1	2
29	P 1225 guide track			-	1	2	1	1	2
30	Top cover rail P 1480		Same lengths as item 28	-	1	2	1	1	2

Item	Description	Order number	Pattern				
			A	C	D	G	K
	Set of accessories for GU-968/150 T&S (included in the set of profiles)	K-15280-00-0-1	1	2	1	1	2
3	Control part	-	1	2	1	1	2
8	Stay arm slide block	-	2	4	2	2	4
17	End cap for P 1603	-	1 LH 1 RH	2 LH 2 RH	1 LH 1 RH	1 LH 1 RH	2 LH 2 RH
17A	Cover-cap for end cap	-	2	4	2	2	4
17B	Countersunk-head tapping screw DIN 7982 ST 3.5 x 38-A2-C-H	-	2	4	2	2	4
18	Spring-loaded buffer	-	1	2	1	1	2
19	Support for P 1603/P 1608	-	1	2	1	1	2
31	End cap for guide track	-	2	2	2	2	2

Item	Description	Order number	Pattern				
			A	C	D	G	K
	Set of T&S stays GU oZ	K-16786-00-0-1	1	2	1	1	2
6	Stay GU-90 oZ	-	2	4	2	2	4

Tilt&Slide hardware GU-968/150 oZ

Bogies and profiles



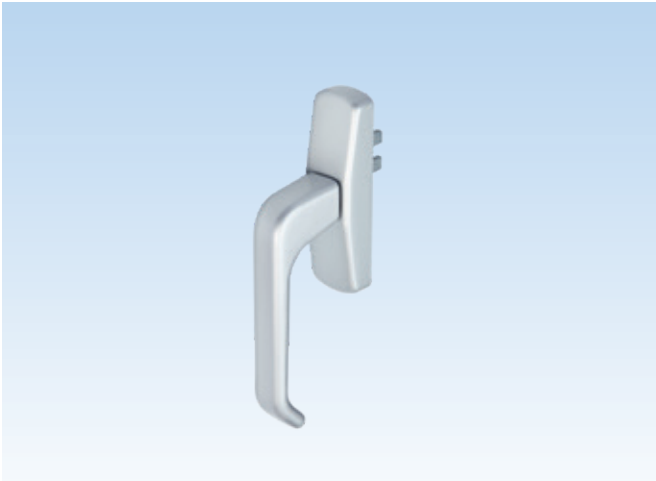
Item	Description	Order number	Pattern				
			A	C	D	G	K
	Set of T&S oZ stay accessories	K-16785-00-0-1	1	2	2	2	2
6A	Countersunk screw M4x16	-	4	8	4	4	8
6B	Base plate for stay-arm	-	2	4	2	2	4
6C	Fixing plate	-	2	4	2	2	4

Item	Description	Order number	Pattern				
			A	C	D	G	K
	Set of stay covers	K-16821-00-0-1	1	2	2	2	2
7	Cover for GU-90 oZ stay-arm	-	2	4	2	2	4

Item	Description	Order number	Pattern				
			A	C	D	G	K
25B	Gasket pressure control	K-16784-00-0-0	1	2	1	1	2

Item	Description	Order number	Pattern					
			A	C	D	G	K	
26	Guide from SW 1101	6-24764-00-0-0	1	2	1	1	2	
34	Engaging striker	10/14	6-25587-01-0-1	2	4	2	2	4
		14/18	6-25587-03-0-1	2	4	2	2	4
		12/15	6-25587-02-0-1	2	4	2	2	4

Item	Description	Order number	Pattern				
			A	C	D	G	K
4	Fixing pin only with pattern D	9-39897-00-0-1	-	-	1	-	-



SPACIO geared turn handle

Geared turn handles

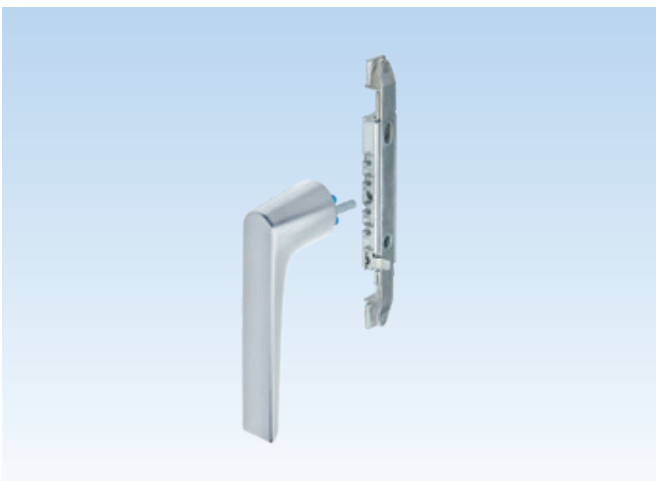
- Available in fork lengths of 22 mm and 33 mm
- With one carrier fork for all standard applications
- Optionally with removable service handles
- Slot measures 7.2x78 / 5.2x78 / 5.5x78 / 6x64



BELCANTO turn handle with insertable gear

Turn handles in combination with insertable gear

- Extensive range of designs and surface finishes
- Optional versions:
 - lockable with key or push-button
 - removable service handles
- Insertable gear:
 - optionally with mishandling device



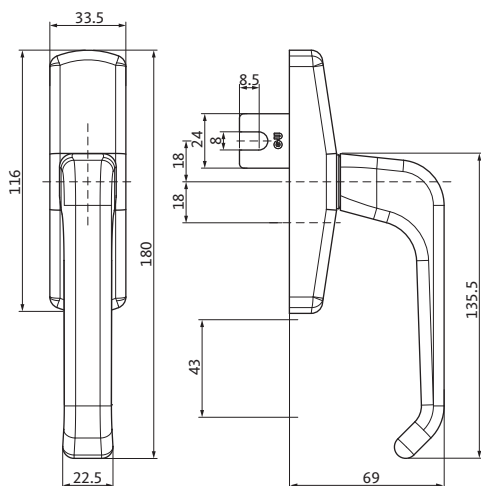
Rosette-free turn handle with insertable gear

Rosette-free turn handles with insertable gear

- Turn handles without visible substructure for high design demands in projects
- Optional versions:
 - lockable with key
- Installation without milling work on the aluminium profile
- Insertable gear:
 - with mishandling device
- 3x Ø6.2 hole spacing 8.5 mm
- Insertable gear K-20050-00-0-1 with Ø8 mm engagement pin (2 pcs. Ø8 to Ø10 mm bushes included)
- Insertable gear K-20050-00-0-1 only compatible with handles 6-40186-00-0-1 / K-20048-00-0-1 / K-20049-00-9-1

Geared turn handles

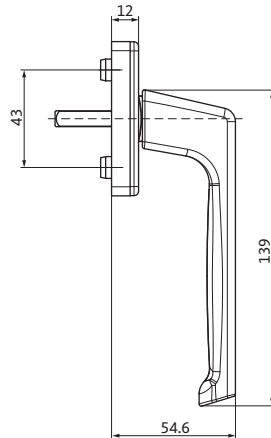
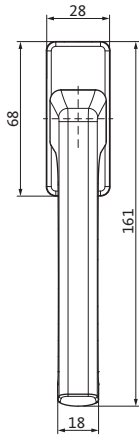
SPACIO



SPACIO geared turn handle

Technical data	
Opening type	Parallel-Slide element Tilt&Slide element
DIN stop	left right
Min. sash overlap height [mm]	7
Max. sash overlap height [mm]	12
Type of fixing	screw-on
Installation tool	Hexagon socket size 4

Distance between fixing holes [mm]	Finish	PU	Order number
84 98	untreated	10	G-46551-00-0-0
	EV1 silver	10	G-46551-00-0-1
	dark bronze	10	G-46551-00-0-5
	black	10	G-46551-00-0-6
	traffic white	10	G-46551-00-0-7
96 104	untreated	10	G-46551-96-0-0
	EV1 silver	10	G-46551-96-0-1
	dark bronze	10	G-46551-96-0-5
	black	10	G-46551-96-0-6
	traffic white	10	G-46551-96-0-7
	Special colour available on request	10	G-46551-96-0-9



DIRIGENT-F turn handle

Technical data	
Opening type	Parallel-Slide element Tilt&Slide element
DIN stop	left right
Distance between fixing holes [mm]	43
Width of square spindle [mm]	7
Length of square spindle [mm]	25, 29, 33, 38, 43

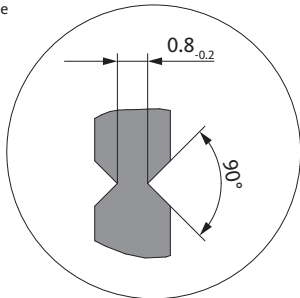
Finish	PU	Order number
EV1 silver	10	6-28072-25-0-11
black	10	6-28072-25-0-6
traffic white	10	6-28072-25-0-7

Installation dimensions and space requirement

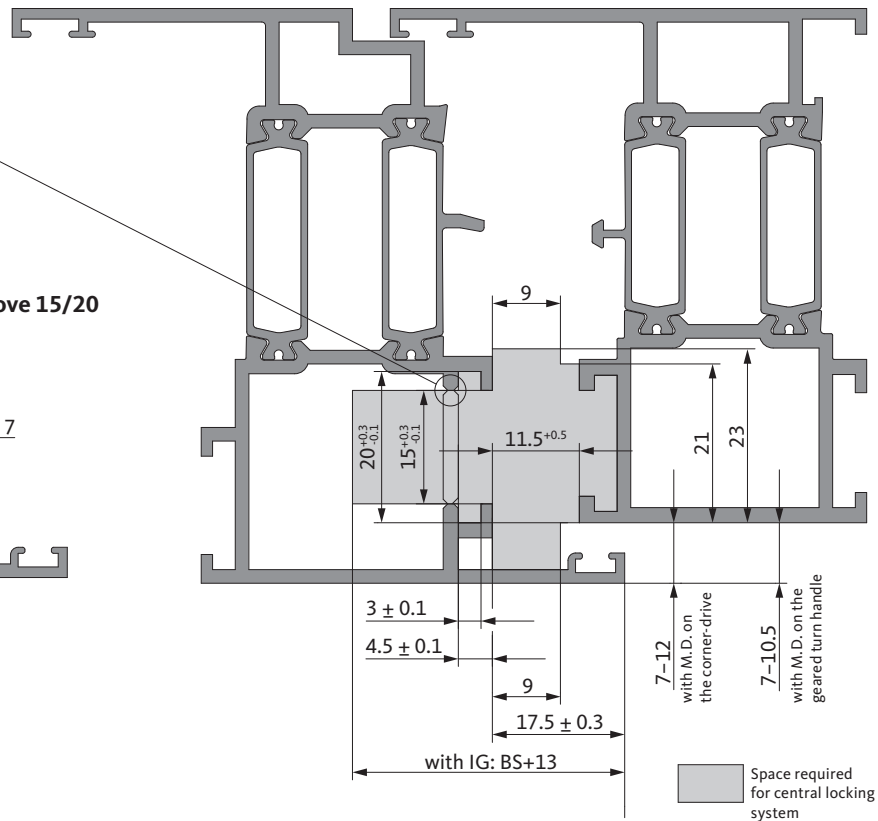
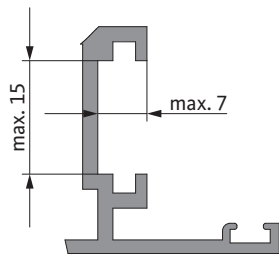
Central locking system



Required if the profile is machined for IG using punches.

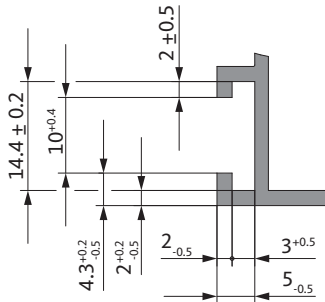


Recessed Euro-groove 15/20

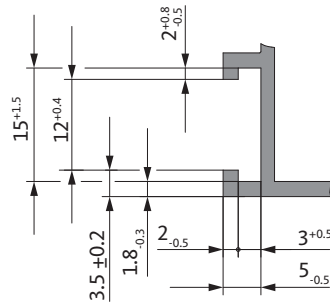




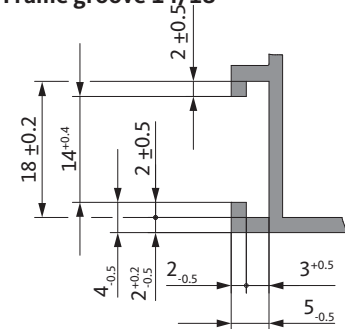
Frame groove 10/14



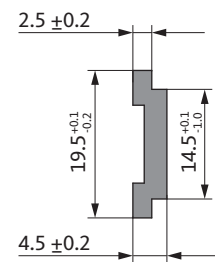
Frame groove 12/15



Frame groove 14/18



Connecting rod



List of abbreviations



List of abbreviations	
BS	Backset (for insertable gears)
IG	Insertable gear
SW	Sash width
M.D.	Mishandling device
ST	Sash thickness
SW	Sash weight
SH	Sash height
HP	Hole pattern
oZ	without power control
P-S	Parallel-Slide
PSP	Parallel-Slide park
T&S	Tilt&Slide
PSL	Parallel-Slide lightweight
PC	Profile cylinder
SHEV	Smoke and heat exhaust ventilation systems
F&S	Fold&Slide hardware



Indication character of the technical information, exclusion of liability

The technical documents are general information based on our experience and tests and therefore do not take any specific application into account. They are intended as general information and for initial orientation only, and must not be used as the decision-making basis. They reflect the version of the catalogue at the time of going to press. Although we have made every attempt to ensure the information provided here is accurate, it is non-binding. It should be adapted to the respective construction projects, usage and specific on-site demands. As a consequence of further developments, but also in order to take current developments into account and to exclude printing errors or other mistakes, you will find the current version of the binding technical documents at www.g-u.com. Be sure to use the latest edition of our technical documents.

The product images shown in the publication may differ from the actual product, particularly as a result of technical improvements. We would also like to draw your attention to the current information at the website mentioned above.

Copyright notice

© All illustrations and texts in this publication are protected by copyright. Unless otherwise stated in the image credits, the rights belong to the Gretschi-Unitas group. Any use of copyright protected materials without the consent of the holder of the rights is prohibited.

Publisher
Gretsch-Unitas GmbH
Baubeschläge
Johann-Maus-Str. 3
71254 Ditzingen, Germany
Tel. +49 71 56 3 01-0
Fax +49 71 56 3 01-2 93
www.g-u.com



WINDOW TECHNOLOGY
DOOR TECHNOLOGY
AUTOMATIC ENTRANCE SYSTEMS
BUILDING MANAGEMENT SYSTEMS

Gretsch-Unitas GmbH
Baubeschlage
Johann-Maus-Str. 3
D-71254 Ditzingen
Tel. + 49 7156 301-0
Fax + 49 7156 301-77980

BKS GmbH
Heidestr. 71
D-42549 Velbert
Tel. + 49 2051 201-0
Fax + 49 2051 201-9733

www.g-u.com

WP00078-04-1-1 03/2024 Printed in Germany

Securing technology for you

