



WINDOW TECHNOLOGY
DOOR TECHNOLOGY
AUTOMATIC ENTRANCE SYSTEMS
BUILDING MANAGEMENT SYSTEMS



Person photos: Getty Images

AUTOMATIC ENTRANCE SYSTEMS

Controlled physical access systems

Securing technology for you



Securing technology for you

Controlled physical access with the GU Group 4

 In use everywhere 6

 Your decision-making aid: the GU product ranking..... 7

 Convincing down to the last detail 8

 The way is clear for barrier freedom and escape route safety 9

2-arm / 3-arm turnstiles 10

Turnstiles 16

Swing gates 20

Sensor barriers 24

Reader posts and pedestrian guiding bars..... 28

Full-height turnstiles..... 30

Accessories 35

Security revolving doors and security curved sliding doors..... 36

Systematic service..... 40

Exclusion of liability / Copyright notice / Image credits..... 42

Since 1907, the Gretsch-Unitas group of companies has specialised in secure entry into a building. According to the guiding notion "Securing technology for you", GU Automatic GmbH which is part of the GU Group also offers intelligent solutions and expert support – from planning through to implementation for new-build as well as retrofit projects. The solutions in the area of controlled physical access are convincing, not least due to their functionality and safety but also because they set new standards in terms of aesthetics and design. Their high-quality workmanship, low susceptibility to damage and long service life also makes them a secure sustainable investment. The product range of the GU Group is rounded off by release elements and access control solutions to match the GU Automatic entrance systems.

One after another for greater security.

Controlling access to company premises, automatically controlling admission tickets and directing large numbers of people into ordered lanes: by offering high-quality products for controlled physical access, GU Group is making a real difference to the security of buildings and their users and offers suitable and visually appealing solutions for every area of application.





Controlled physical access with the GU Group



In use everywhere

GU Group controlled physical access systems meet the highest expectations in terms of security, accessibility and comfort in security-sensitive areas. Whether providing protection on the facade, controlled physical access to the building or a comprehensive solution combined with access control system: the solutions are fully harmonised with the area of application and the customer requirements.

Strong in plant security

As the first security barrier, full-height turnstiles in combination with fences are a significant component of modern plant security. Full-height turnstiles can be operated without personnel, and where half-height systems are used, personnel ensure protection against tampering.

Expertise in visitor logistics

GU Group controlled physical access systems are used in all situations where large numbers of persons place huge challenges on the visitor logistics: in modern administration and company buildings, authorities and ministries exactly as they do at exhibitions, trade fairs and congresses.

Convenience in the event and leisure sector

Intelligent visitor management ensures comfortable and secure access to sports and leisure facilities. The GU Group 2-arm / 3-arm turnstiles or sensor barriers are not perceived by authorised visitors as a hindrance and, in conjunction with an access control system, reliably prevent unauthorised access using forged or invalid cards.

Dynamic in the infrastructure

At airports and railway stations, the aim is to direct large numbers of passengers quickly and safely to their train, bus or plane. GU Group controlled physical access systems ensure they can also do this safely and comfortably, even when carrying luggage.

Controlled physical access at a glance

■ performance achieved
■ maximum performance

3-arm turnstiles



Turnstiles



Swing gates



Your decision-making aid: the GU product ranking

An efficient solution for controlled physical access can really only be achieved by satisfying all safety-related, economic and aesthetic requirements. When providing access to a football stadium, resistance to tampering by using invalid tickets and a high throughput of persons are the main priority. In the prestigious entrance area of a company building, on the other hand, the emphasis is on greater access comfort.

Safety experts, planners and architects can use the GU product ranking as an orientation aid in the first instance. From this, they can see exactly which requirements the relevant solution satisfies – this is a perfect way to compare and contrast product solutions and narrow down the range of options which could be used for the specific application.

The performance of the products or product groups is shown on a scale and reflects three criteria: resistance to tampering means the degree of protection against the bypassing of mechanical or electronic barriers. Access comfort, means how the user experiences the product. And the throughput of persons indicates how fast the system is.

■ performance achieved
■ maximum performance

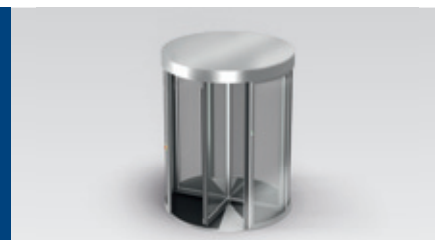
Sensor barriers



Full-height turnstiles



Security revolving doors and security curved sliding doors





Convincing down to the last detail

Controlled physical access systems must satisfy the highest of expectations: people pass through them thousands of times and they are rarely handled gently. They must be part of a complex system and must adapt flexibly to different situations. What's more, they should be low key both in terms of how they are perceived by users and the balance of energy. Fortunately GU Group has the right technical solutions at its disposal and therefore offers genuine added value – as a whole and also down to the smallest detail.

Brake instead of latch

In highly frequented areas, high demands are placed on operating reliability. Maximum operating hours and a long service life can only be achieved by efficient vandalism protection. GU Group guarantees this with the integrated, adjustable overload protection: instead of a mechanical latch, a motor brake blocks the passage element. If the pressure is too high, the motor brake is released and allows persons to pass through. In contrast to a mechanical latch, this eliminates damage to components or injury to persons on the blocking element. Furthermore, the integrated torque limiter protects against damage due to vandalism and physical injury.

Further benefits of the overload protection:

- Secure release and protection from injury in the event of large crowds: the barrier is also released in the event of a high pressure load build-up prior to access authorisation.
- No accident risk due to spinning: the motor brake limits the rotational speed of turnstiles.
- Quiet operation: perfect for areas that are sensitive to noise.

Flexible control

Owing to a flexible control concept, GU Group ensures that parameters can be individually adjusted and adapted to the relevant application. All functions are included in the standard version and are activated flexibly during start-up.

Further benefits of the control system:

- Everything in view: data and events can be easily read out during maintenance.
- Highly compatible: activation by all modern access control systems.

Easy-to-use control panel

The controlled physical access can be conveniently controlled from the reception area via the user-friendly control panel.

The advantages:

- Manual release: for individual persons or groups.
- Straightforward monitoring: central display of operating statuses, person counting, error and warning messages, for example.

Sustainable and future-proof

By opting for a GU Group controlled physical access system, you benefit from sustainable security. Many individual factors interlock to make the solutions an investment which pays off in the long run:

- Comfortable passage: servo drive for convenient access.
- Low energy consumption: leads to low operating costs and longer duration of emergency power supply.
- Minimum risk of injury: due to low energy drive.
- Low-maintenance mechanism: leads to low operating costs throughout the entire product life cycle.

The way is clear for barrier freedom and escape route safety

Secure and comfortable system as opposed to stand-alone solution: a controlled physical access system is not a stand-alone solution but part of the building and its systems. It is therefore important, particularly when it comes to barrier freedom and escape route safety, to plan in a system-oriented manner. GU Group has the right solutions for combining controlled physical access with barrier freedom and escape route safety.

Barrier-free access for all

Controlled single person access can be effectively implemented using a 3-arm turnstile or turnstile. However they are an obstruction for older persons, wheelchair bound persons or parents with prams.

The solution: combination with an additional swing gate which provides comfortable access to anyone.

The alternative: turnstile with 2-arm design and pass-through position for barrier-free access.

Safe escape routes

To make additional escape routes available quickly and safely in emergencies, the controlled physical access system can be monitored. This consists of an illuminated emergency button and corresponding identifier as well as a key switch to allow short-term release for authorised persons. A GU Group escape door control system provides a harmonised one-stop solution. Here too, a turnstile with 2-arm design with adjustable pass-through position demonstrates just how effective it can be: the additional escape route is released with minimum effort.



2-arm turnstile in normal operation: the electric brake holds the turnstile in the locked position. When a gentle pressure is applied, the drive is activated and turns the turnstile further through 120° or 240°.



2-arm turnstile in release position: the turnstile underneath the housing turns when the doorman presses the button or when the alarm is triggered. The access or additional escape route is released. Normal operation can then be resumed quickly and easily at the push of a button.

3-arm / 2-arm turnstiles

True versatility in stainless steel.

Whether activated individually or in series, or indoors or outdoors, 3-arm turnstiles are the most common type of access control and are highly versatile. In the normal operating state, an electric brake holds the turnstile in the locked position. When released by a reader system or manually, via the control panel for example, the brake is disengaged to allow access. A gentle pressure is sufficient to trigger the drive and release the turnstile.

The GU product ranking





GU-MC2 / GU-MC3 two-arm / three-arm turnstiles

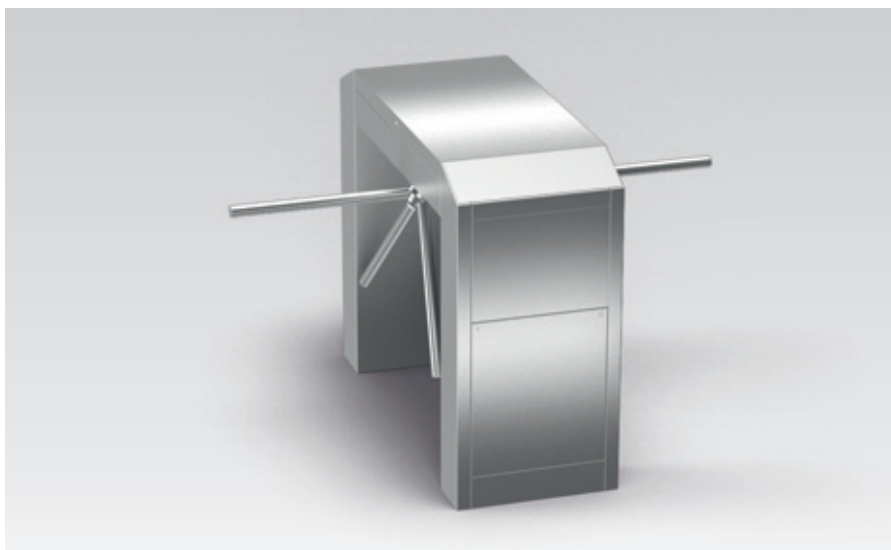
Economic solution for indoors and outdoors



GU-MC3 three-arm turnstile

Modest price – spoilt for choice

If you are looking for controlled physical access systems with a rugged construction, high pass-through rate and cost-effective design, the motor-driven GU-MC2 / GU-MC3 two-arm / three-arm turnstile is a perfect choice. With folded, hard-wearing and vandal-proof stainless steel housing, this modestly priced 2-arm / 3-arm turnstile is particularly suitable for heavily trafficked areas indoors. When equipped with the optional winter package, it can also withstand inclement weather in exposed outdoor areas.



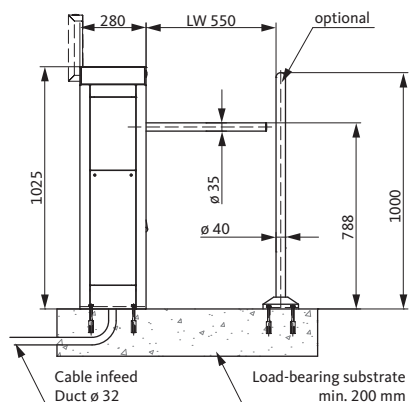
GU-MC3 DUO three-arm turnstile

Versions

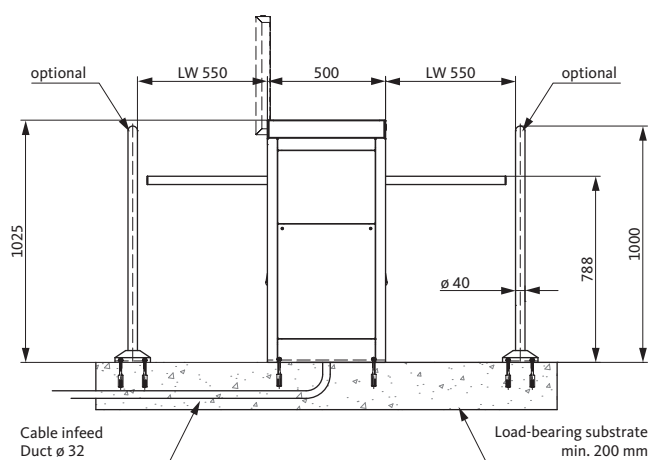
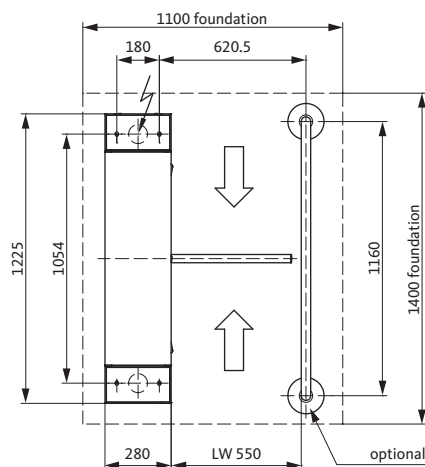
- GU-MC3: three-arm turnstile
- GU-MC2: two-arm turnstile for barrier-free access and additional escape route solutions
- GU-MC2 DUO / GU-MC3 DUO: two or three-arm turnstile with turnstiles on both sides for configuration of multi-lane arrangements

Product features

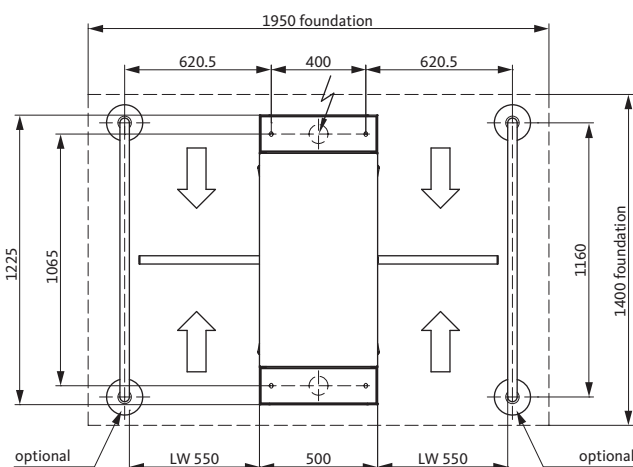
- Equipped with servo drive for comfortable access
- Suitable for operation in one or both directions
- Can be prepared, if required, for the installation of access control systems
- Stainless steel turnstile



GU-MC3 three-arm turnstile



GU-MC3 DUO three-arm turnstile



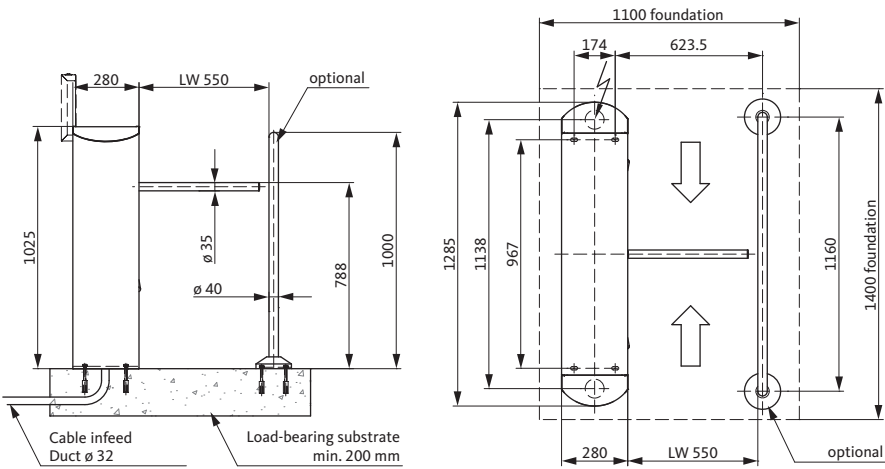
The GU Standard		
Designation	GU-MC2 / GU-MC3 two-arm / three-arm turnstiles	GU-MC2 DUO / GU-MC3 DUO two-arm / three-arm turnstiles
Passage	550 mm	2 x 550 mm
Length	1225 mm	1225 mm
Width	280 mm	500 mm
Height	1025 mm	1025 mm
Weight	approx. 70 kg	approx. 140 kg
Supply voltage	230 V AC ~ 50 – 60 Hz	230 V AC ~ 50 – 60 Hz
Power consumption	80 VA	160 VA
Material	Stainless steel 1.4301	Stainless steel 1.4301
Ground surface	Grain 220	Grain 220
Communication	Potential-free contacts	Potential-free contacts
Special versions available on request.		

GU-MT2 / GU-MT3 two-arm / three-arm turnstiles

Uncompromising aesthetics



GU-MT3 three-arm turnstile



GU-MT3 three-arm turnstile

Sturdy design and slender form

The GU-MT2 / GU-MT3 two-arm / three-arm turnstile with hard-wearing attractive stainless steel housing is ideal when setting up access areas on the inside of the building where aesthetics are of primary concern.

Versions

- GU-MT3: three-arm turnstile
- GU-MT2: two-arm turnstile for barrier-free access and additional escape route solutions

Product features

- Equipped with servo drive for comfortable access
- Suitable for operation in one or both directions
- Can be prepared, if required, for the installation of access control systems
- Stainless steel turnstile

The GU Standard	
Designation	GU-MT2 / GU-MT3 two-arm / three-arm turnstiles
Passage	550 mm
Length	1285 mm
Width	280 mm
Height	1025 mm
Weight	approx. 70 kg
Supply voltage	230 V AC ~ 50 – 60 Hz
Power consumption	80 VA
Material	Stainless steel 1.4301
Ground surface	Grain 220
Communication	Potential-free contacts
Special versions available on request.	

GU-CM2 / GU-CM3 two-arm / three-arm turnstiles

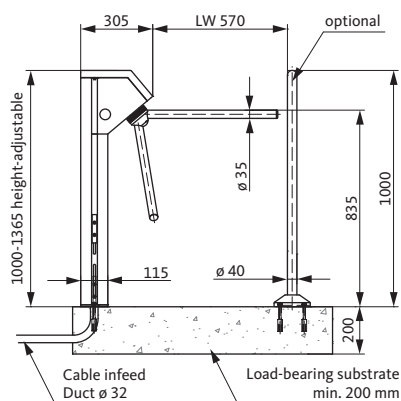
The versatile professional space saver



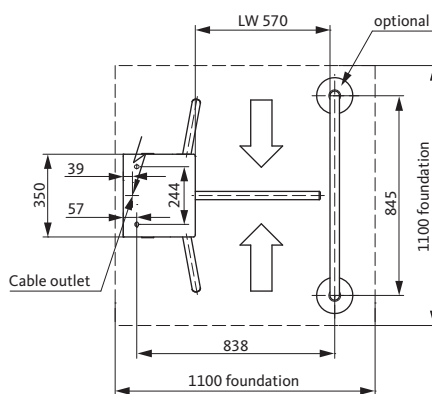
GU-CM3 three-arm turnstile

Compact solution for outdoors

The space-saving motor-driven GU-CM2 / GU-CM3 two-arm / three-arm turnstile with weatherproof powder-coated housing and integrated height-adjustable supporting foot is especially effective when used outdoors. An optional stainless steel version with fixed height is also available for indoor use.



GU-CM3 three-arm turnstile



Versions

- GU-CM3: three-arm turnstile
- GU-CM2: two-arm turnstile for barrier-free access and additional escape route solutions

Product features

- Equipped with servo drive for comfortable access
- Suitable for operation in one or both directions
- Can be prepared, if required, for the installation of access control systems
- Stainless steel turnstile

The GU Standard

Designation	GU-CM2 / GU-CM3 two-arm / three-arm turnstiles
Passage	570 mm
Length	350 mm
Width	305 mm
Height	1000 – 1365 mm (height-adjustable)
Weight	approx. 45 kg
Supply voltage	230 V AC ~ 50 – 60 Hz
Power consumption	80 VA
Material	Stainless steel 1.4301
Ground surface	Grain 220
Communication	Potential-free contacts

Special versions available on request.

Aesthetic objects with sophisticated appearance.

With their high-quality transparent design and quiet operation, turnstiles are the perfect complement to prestigious areas of buildings. They live up to their appearance in terms of performance owing to the intelligent functional principle: in the normal operating status an electric brake holds the turnstile in the locked position. When released by a reader system, or by the optional manual release function, the brake is disengaged and the turnstile released. When a gentle pressure is applied, the drive starts the rotating movement.

The GU product ranking





GU-GT 1000 turnstile

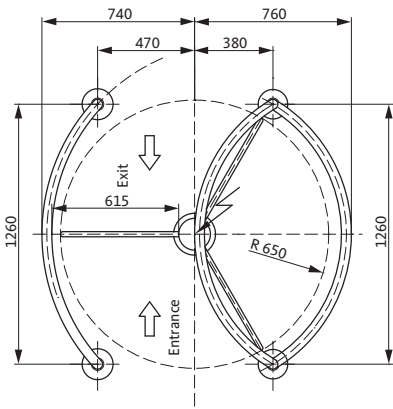
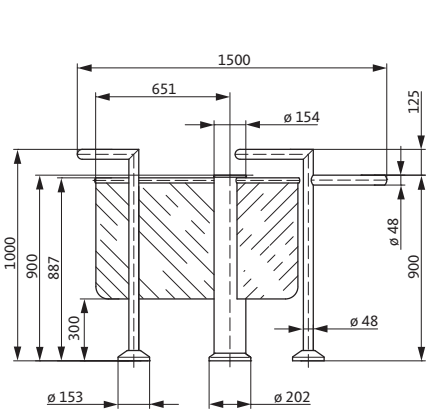
Stylish appearance and easy access



GU-GT 1000 turnstile

Glass and stainless steel in their ultimate aesthetic form

The GU-GT 1000 motorised half-height turnstile has a particularly sophisticated appearance due to the combination of glass and stainless steel and is particularly suitable for buildings with a prestigious architectural design. In quiet areas in particular the turnstile also proves effective due to its quiet operation. The 120° division and light-running operation combine a high degree of comfort with effective physical separation.



Product features

- Equipped with servo drive for comfortable access
- Suitable for operation in one or both directions
- 120° indexing
- Integration of access control systems at the round profile or in separate reader post

GU-GT 1000 turnstile

The GU Standard	
Designation	GU-GT 1000 turnstile
Passage	615 mm
Length	1260 mm
Width	1500 mm
Height	1000 mm
Weight	approx. 110 kg
Supply voltage	230 V AC ~ 50 – 60 Hz
Power consumption	80 VA
Material	Stainless steel 1.4301; barrier elements made of toughened safety glass
Ground surface	Grain 220
Communication	Potential-free contacts
Special versions available on request.	

GU-VA 1100 turnstile

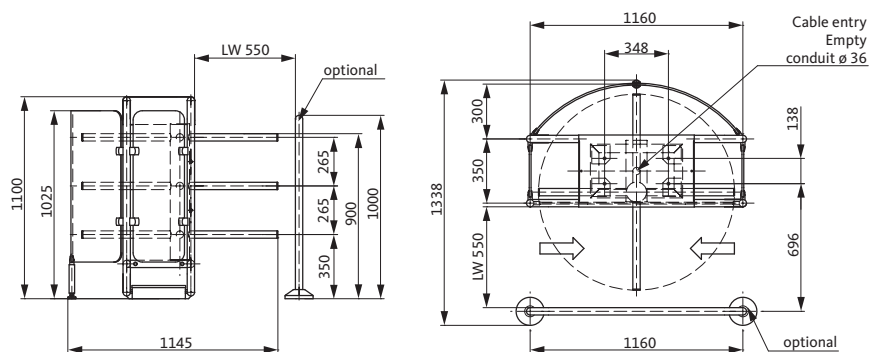
The rugged leisure professional



GU-VA 1100 turnstile

Weather and waterproof

Ideal for barriers at heavily trafficked entrances to swimming pools and leisure facilities: the motorised half-height GU-VA 1100 turnstile is manufactured entirely from rustproof materials. Thanks to its rugged design it reliably ensures effective controlled physical access. The drive and control are located in the upper section where they are protected from ground humidity and can be easily accessed for maintenance purposes.



GU-VA 1100 turnstile

Product features

- Equipped with servo drive for comfortable access
- Suitable for operation in one or both directions
- 90° indexing
- Can be prepared, if required, for the installation of access control systems

The GU Standard

Designation	GU-VA 1100 turnstile
Passage	550 mm
Length	1200 mm
Width	1145 mm
Height	1100 mm
Weight	approx. 110 kg
Supply voltage	230 V AC ~ 50 – 60 Hz
Power consumption	80 VA
Material	Stainless steel 1.4301; plexiglass housing
Ground surface	Grain 220
Communication	Potential-free contacts

Special versions available on request.

Comfortable access for all.

3-arm turnstiles and turnstiles represent a hindrance to parents with prams, wheelchair bound persons and travellers with luggage. The controlled physical access system is easy to pass through in both directions when combined with GU Group motorised swing gates. The swing gates are made of rustproof materials and are therefore not just suitable for office buildings, but also leisure facilities or airports. The integrated planetary gear ensures a precise reliable zero position with opposing double entrances.

The GU product ranking





GU-IT 1000 swing gate

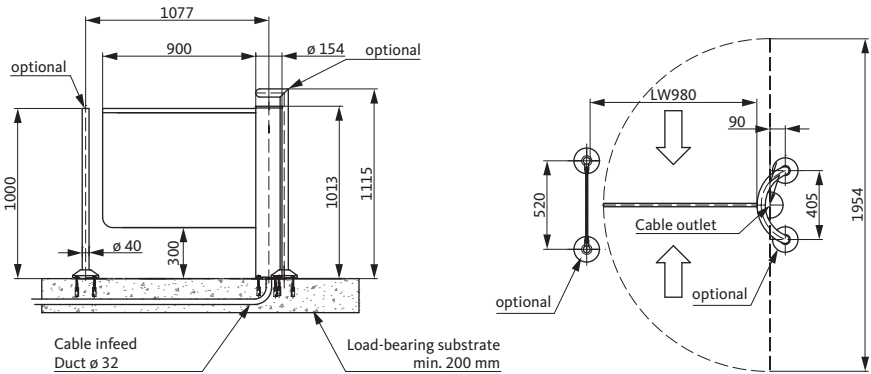
3-arm turnstiles and turnstiles side by side



GU-IT 1000 swing gate

Striking and beautiful

Due to the drive in the axle of the barrier element and inconspicuous glass leaf, the elegant GU-IT 1000 swing gate blends in perfectly with an extremely wide range of architectural concepts. The sophisticated combination of glass and stainless steel is particularly effective when used with the GU-GT 1000 turnstile. Users of the GU-IT 1000 benefit from the light-running quiet operation and building operators benefit from the low-maintenance mechanical system.



GU-IT 1000 swing gate

Product features

- Automatic drive for comfortable access
- Suitable for operation in one or both directions
- Access control systems are integrated into separate reader post

The GU Standard	
Designation	GU-IT 1000 swing gate
Passage	980 mm
Length	154 mm
Width	1055 mm
Height	1000 mm
Weight	approx. 50 kg
Supply voltage	230 V AC ~ 50 – 60 Hz
Power consumption	80 VA
Material	Stainless steel 1.4301
Ground surface	Grain 220
Communication	Potential-free contacts
Special versions available on request.	

GU-IH 1000 swing gate

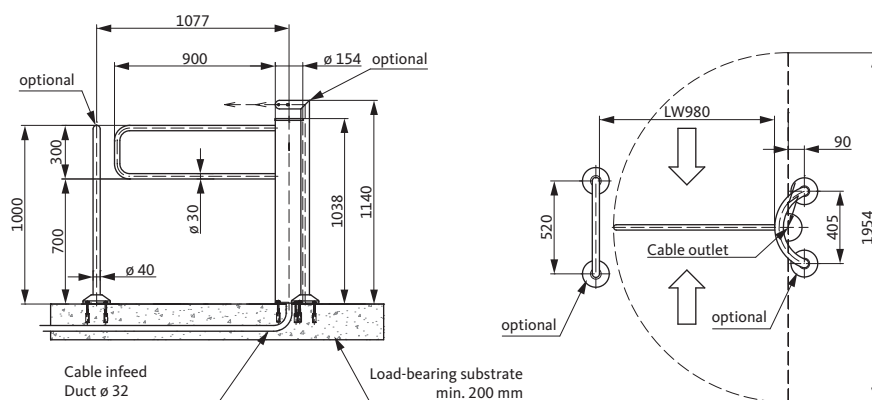
Tough but incredibly gentle



GU-IH 1000 swing gate

Moves easily and quietly

The perfect complement for controlled physical access systems: the GU-IH 1000 swing gate ensures barrier-free access in controlled physical access systems for people with prams, wheelchairs or luggage. It is rustproof, hard-wearing and durable which makes it eminently suitable for high pass-through rates. The drive integrated into the barrier element and low-key stainless steel optics mean that the swing gate blends in perfectly with the architecture.



GU-IH 1000 swing gate

Product features

- Automatic drive for comfortable access
- Suitable for operation in one or both directions
- Integration of access control systems in separate reader post

The GU Standard	
Designation	GU-IH 1000 swing gate
Passage	980 mm
Length	154 mm
Width	1055 mm
Height	1000 mm
Weight	approx. 50 kg
Supply voltage	230 V AC ~ 50 – 60 Hz
Power consumption	80 VA
Material	Stainless steel 1.4301
Ground surface	Grain 220
Communication	Potential-free contacts

Special versions available on request.

First-rate access.

User-friendly access comfort, high throughput capacity and sophisticated optics: sensor barriers offer outstanding solutions for controlled physical access. They consist of a passage monitored by sensors with electronically controlled motorised half-height swing doors. Eight integrated light barriers per lane monitor the interior, protect against unauthorised entry and ensure convenient contactless access. Trapezoidal pillars in which card readers and release displays can be installed are mounted on the front and rear of the barrier body.

The GU product ranking





GU-DF 550 sensor barrier

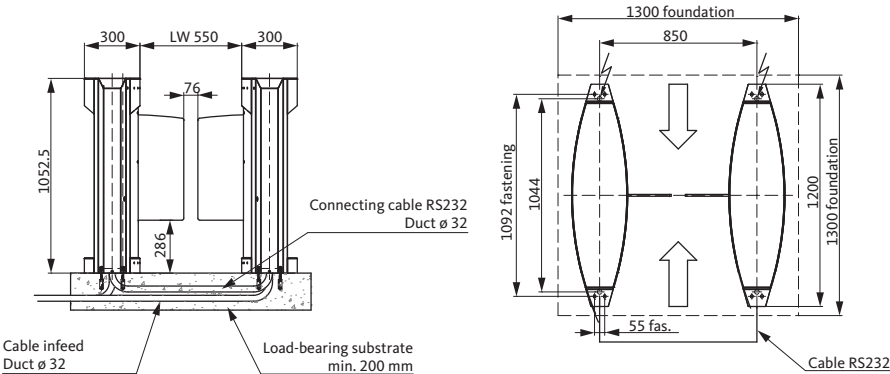
Contact-free passage in high-speed mode



Sensor barrier GU-DF 550

More design and access freedom

The GU-DF 550 sensor barrier combines contactless access comfort with a high pass-through rate. It ensures a high degree of flexibility when designing entrance areas: closed or open operation mode is possible. With the open operation mode for authorised personnel, the barrier elements remain open and only close if the release has not been given. In the closed operating mode, bi-directional operation is possible with the entry and exit in the same lane. If more than two sensor barriers are used side by side, the DUO version in the centre visually rounds off the ensemble and lends it symmetry.



GU-DF 550 sensor barrier

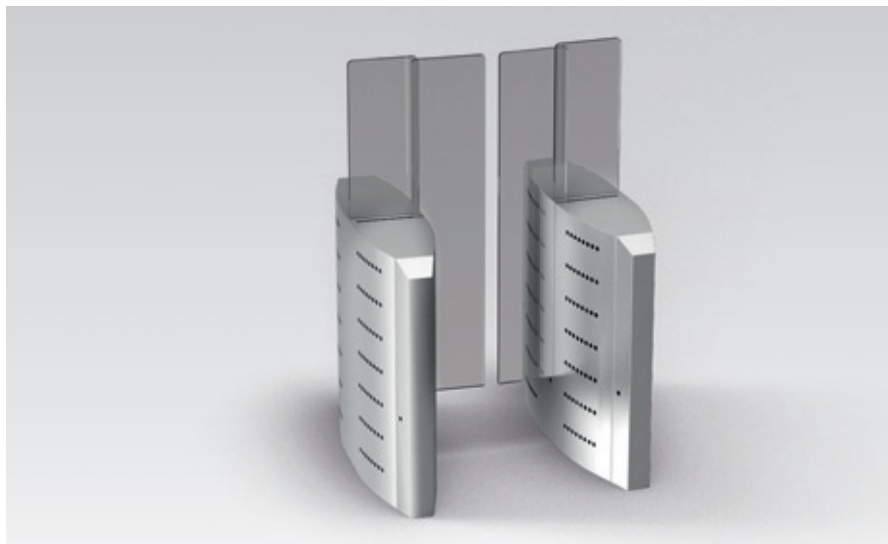
Versions

- GU-DF 550: sensor barrier with swing leaf on one side
- GU-DF 550 DUO: sensor barrier with swing leaf on both sides

Product features

- Automatic drive for comfortable access
- Suitable for operation in one or both directions
- Can be used in open and closed operation mode

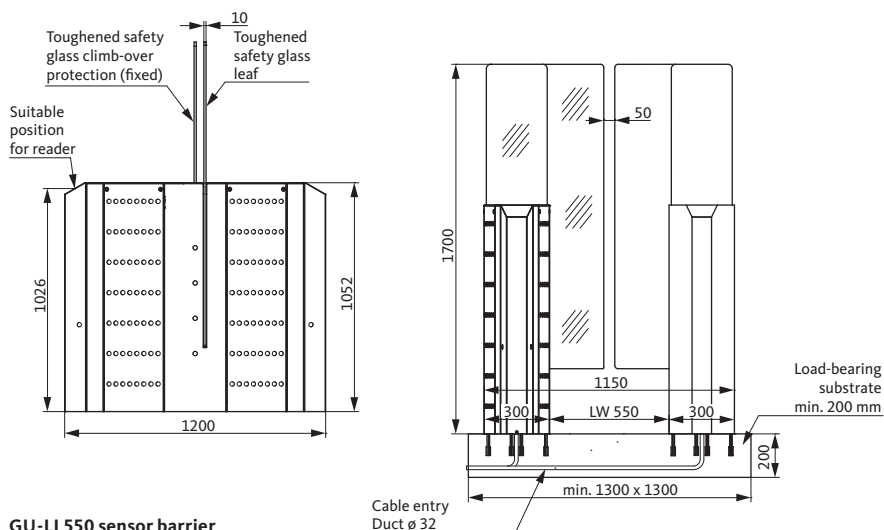
The GU Standard	
Designation	GU-DF 550 sensor barrier
Passage	550 mm
Length	1200 mm
Width	1150 mm
Height	1052.5 mm
Weight	approx. 2 x 70 kg
Supply voltage	230 V AC ~ 50 – 60 Hz
Power consumption	2 x 100 VA
Material	Stainless steel 1.4301; plexiglass barrier elements
Ground surface	Grain 220
Communication	Potential-free contacts
Special versions available on request.	



GU-LI 550 sensor barrier

Security due to climb-over protection

Ideal for heavily trafficked and prestigious entrance areas such as those in office and administration buildings, banks or VIP areas of stadiums: the GU-LI 550 sensor barrier provides visual highlights, accelerates the flow of persons and provides protection with high sliding doors against attempts to climb over. If more than two sensor barriers are used side by side, the DUO version in the centre visually rounds off the ensemble and lends it symmetry.



GU-LI 550 sensor barrier

Versions

- GU-LI 550: sensor barrier with sliding panel on one side
- GU-LI 550 DUO: sensor barrier with sliding panel on both sides

Product features

- Automatic drive for comfortable access
- Suitable for operation in one or both directions
- Climb-over protection with 1700 mm high barrier elements

The GU Standard

Designation	GU-LI 550 sensor barrier
Passage	550 mm
Length	1200 mm
Width	1150 mm
Height	1700 mm
Weight	approx. 2 x 70 kg
Supply voltage	230 V AC ~ 50 – 60 Hz
Power consumption	2 x 100 VA
Material	Stainless steel 1.4301
Ground surface	Grain 220
Communication	Potential-free contacts
Special versions available on request.	

Reader posts

Tailor made for the access control system



As individual as our application

The purpose of reader posts is to accommodate access control systems, LED lights and escape door terminals, for example. They are primarily used with swing gates and also with the GU-GT 1000 turnstile, as integration into the housing of the controlled physical access system is not possible in these cases.



Stands out: GU-LS 140 reader post

Footprint	140 x 140 mm
Height	1050 mm
Material	CrNi steel / V2A



Slender and cylindrical: GU-LS 154 R reader post

Diameter	154 mm
Height	1050 mm
Material	CrNi steel/ V2A



Cylindrical and solid: GU-LS 254 R reader post

Diameter	254 mm
Height	1050 mm
Material	CrNi steel / V2A



GU-D 1000 pedestrian guiding bar

Elegant, transparent and ideal for prestigious entrance areas: the GU-D 1000 pedestrian guiding bar combines security and attractive design in one product solution.

Height	1000 mm
Width*	1000 mm
Round profile	Ø 40 mm
Material	CrNi steel / V2A matt brushed
Plate	Toughened safety glass



GU-B 1200 pedestrian guiding bar

Security for the building and safety for users: the GU-B 1200 pedestrian guiding bar with round corners is sturdy and protects against injury.

Height	1000 mm
Width*	1200 mm
Round profile	Ø 40 mm
Material	CrNi steel / V2A matt brushed
Plate	10 mm plexiglass



GU-M 1200 pedestrian guiding bar

Economic basic solution for areas with low security requirements: the GU-M 1200 pedestrian guiding bar with round corners is hard-wearing and protects against injuries.

Height	1000 mm
Width*	1200 mm
Round profile	Ø 40 mm
Material	CrNi steel / V2A matt brushed

* other dimensions available on request

Effective against water, weather and tampering.

Plant security, leisure facilities, stadiums or in transition areas between the building and underground garage: whatever the application, GU Group motorised full-height turnstiles come in many different versions and specifications and therefore cover all requirements of secure controlled physical access for outdoor areas. Tried-and-tested standard modules combined with various roof and lighting variants satisfy a wide range of customer requests – in both new-build and retrofit projects.

The GU product ranking



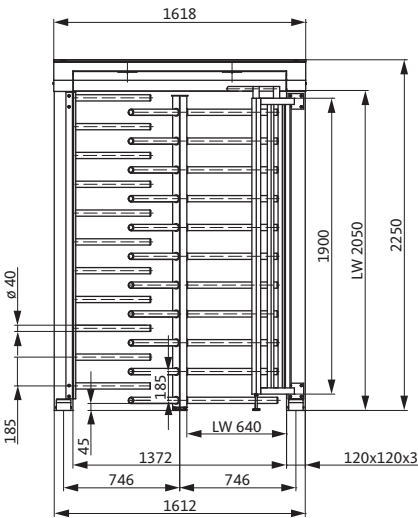


GU-EHE 120 full-height turnstile

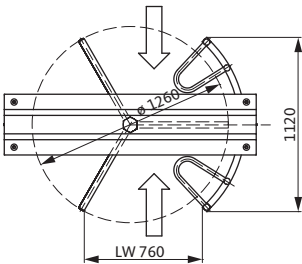
The economic solution for outdoors



GU-EHE 120 full-height turnstile



GU-EHE 120 full-height turnstile



Compatible with every access solution and every budget

The motorized GU-EHE 120 full-height turnstile with turnstile and barrier grate made of rustproof stainless steel is eminently suitable for plant security outdoors and for stadiums and transitional areas between underground garages and buildings. Owing to its size it can be seamlessly integrated into fencing systems. Due to the 120° division, the GU-EHE 120 full-height turnstile offers a high degree of pass-through comfort with reliable separation.

The GU Standard	
Designation	GU-EHE 120 full-height turnstile
Passage	640 mm
Length	1260 mm
Width	1618 mm
Height	2250 mm
Weight	approx. 230 kg
Supply voltage	230 V AC ~ 50 – 60 Hz
Power consumption	100 VA
Material	Stainless steel 1.4301; powder-coated aluminium
Ground surface	Grain 220
Communication	Potential-free contacts
Special versions available on request.	

Product features

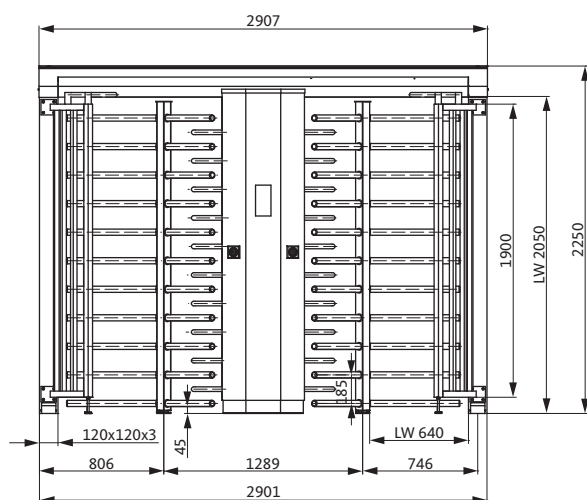
- Equipped with servo drive for comfortable access
- Suitable for operation in one or both directions
- Also available with optional mechanical anti-thrust device to cater for power failures (one direction open, one direction blocked)



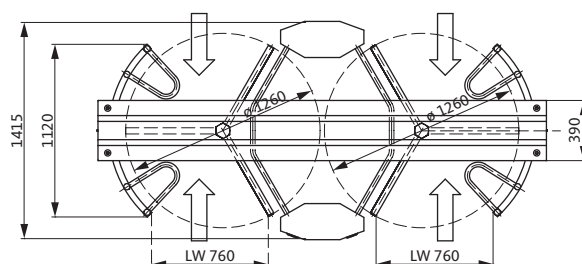
GU-EHD 120 full-height turnstile

Double efficiency

The motorised GU-EHD 120 full-height turnstile is the double version of the GU-EHE 120. The turnstile and barrier elements are made of rustproof stainless steel. The bridge with sheet-metal covers and the centre box are hot-dip galvanised and powder-coated. The GU-EHD 120 full-height turnstile is ideal for heavy pedestrian traffic outdoors. The centre box offers installation options for card readers, intercoms and other types of access control systems. The maintenance-friendly control system is housed overhead in the bridge.



GU-EHD 120 full-height turnstile



The GU Standard	
Designation	GU-EHD 120 full-height turnstile
Passage	2 x 640 mm
Length	1415 mm
Width	2907 mm
Height	2250 mm
Weight	approx. 450 kg
Supply voltage	230 V AC ~ 50 – 60 Hz
Power consumption	200 VA
Material	Stainless steel 1.4301; powder-coated aluminium
Ground surface	Grain 220
Communication	Potential-free contacts
Special versions available on request.	

Product features

- Equipped with servo drive for comfortable access
- Suitable for operation in one or both directions
- Also available with optional mechanical anti-thrust device to cater for power failures (one direction open, one direction blocked)
- Also available with optional roof which comes in different designs

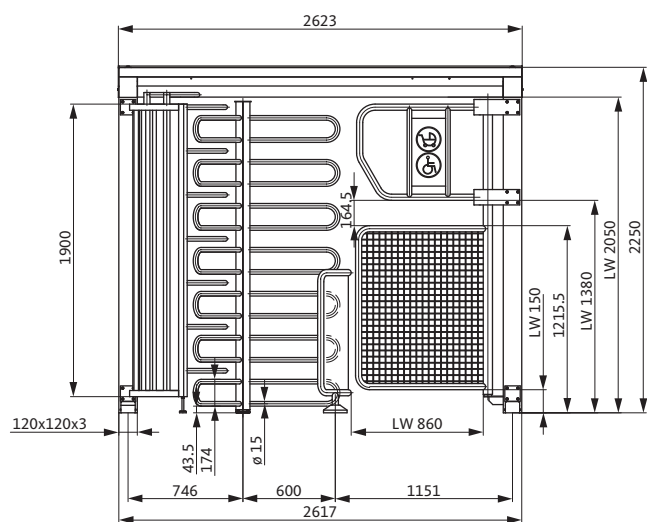
Access and transport door rolled into one



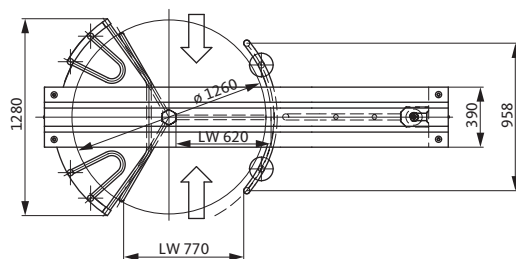
GU-BFB 120 full-height turnstile

Makes everybody welcome

The motorised GU-BFB 120 full-height turnstile provides barrier-free passage with wheelchairs and also allows prams, luggage or bikes to pass through. The turnstile, safe-T-catch as well as the door fixed part are made of rustproof stainless steel. It is particularly suitable for plant security outdoors and for leisure facilities and transition areas between underground garages and buildings. Owing to the 120° division, the GU-BFB 120 full-height turnstile offers a high degree of pass-through comfort with reliable controlled physical access.



GU-BFB 120 full-height turnstile



The GU Standard	
Designation	GU-BFB 120 full-height turnstile
Passage	620 mm
Length	1280 mm
Width	2623 mm
Height	2250 mm
Weight	approx. 380 kg
Supply voltage	230 V AC ~ 50 – 60 Hz
Power consumption	200 VA
Material	Stainless steel 1.4301; powder-coated aluminium
Ground surface	Grain 220
Communication	Potential-free contacts
Special versions available on request.	

Product features

- Equipped with servo drive for comfortable access
- Suitable for operation in one or both directions
- Also available with optional mechanical anti-thrust device to cater for power failures (one direction open, one direction blocked)
- Also available with optional roof which comes in different designs

Accessories for controlled physical access systems

LED signal lamps

- As release signal: installation in combination with access control elements
- As lane signal: vertical installation in housing
- Diameter 60 mm
- Protection type IP 65
- Flush-mounted in housing



Release signal with arrow symbol: passage released or blocked



Lane signal in pass-through direction released or blocked

Consoles

Different console versions are available for fastening elements, e.g. 3-arm turnstiles, to the unfinished floor.



Console for GU-MC 2-arm / 3-arm turnstiles

Accessories for 2-arm / 3-arm turnstiles

Sensors

The access comfort and reliability of 2-arm / 3-arm turnstiles can be further increased by using the right accessories: thus if sensors are installed in front of the turnstile, the rotational movement starts automatically when approaching the turnstile and following its release. It is no longer necessary to push gently. Light barriers in front of the turnstile make it harder to crawl under or climb over it.

Accessories for swing gates and GU-GT 1000 turnstile

Housing cabinet

The control system with the swing gates and also the GU-GT 1000 turnstile is mounted in the housing cabinet.

- Dimensions (W x H x D): 400 x 500 x 210 mm

High efficiency, low space requirement.

The compact GU Group security revolving doors and security curved sliding doors guarantee reliable and comfortable controlled physical access, also without surveillance personnel. The compact design with ample glass ensures a feeling of lightness, space, elegance and brightness. Positive side effects are continuous protection from noise and draughts. The doors are also extremely flexible, and come in a wide range of materials and surfaces and can be easily adapted to access control systems.

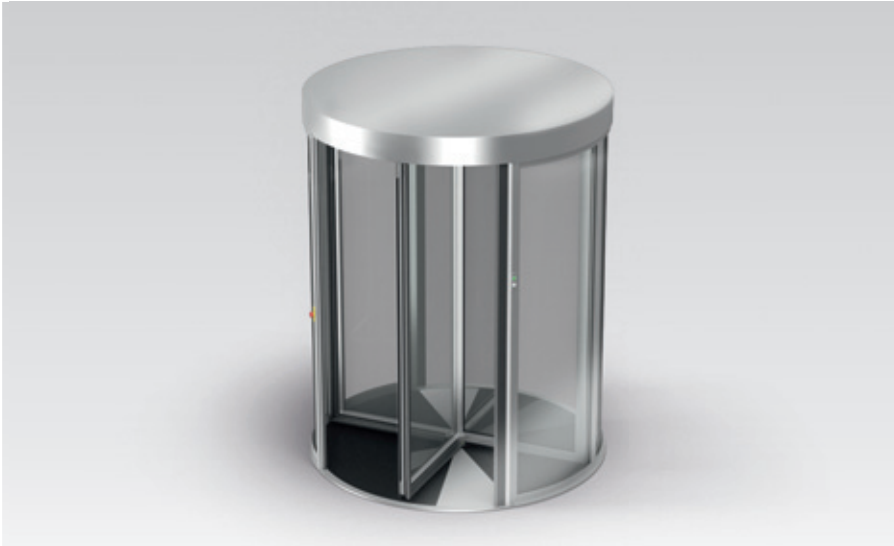
The GU product ranking





GSI security revolving door

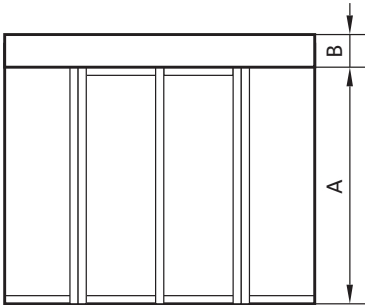
Controlled access in both directions simultaneously



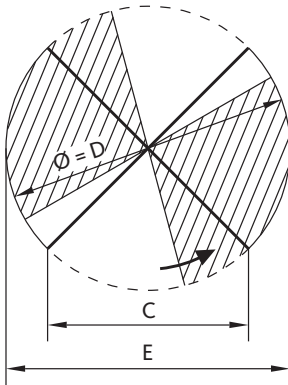
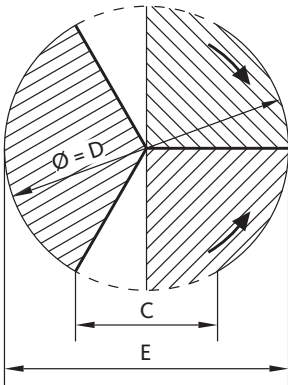
GSI security revolving door

Tailor-made security

The GSI security revolving door is an efficient solution for controlling access to security-sensitive buildings or areas within a building. In addition to functionality, the focus is also on the aesthetics of the building architecture. A 2-zone contact floor mat is used to monitor the passage area. In the initial position, the GSI security revolving door is locked by means of a motor-driven brake system. The door is released via an access control system – persons without access authorisation are guided out of the security revolving door away from the entrance.



GSI security revolving door



The GU standard					
GSI security revolving door					
D	A	B	C / 3-leaf	C / 4-leaf	E
1800 mm	2100 – 3000 mm	350 – 800 mm	≈ 859 mm	≈ 1239 mm	1860 mm
1900 mm	2100 – 3000 mm	350 – 800 mm	≈ 907 mm	≈ 1308 mm	1960 mm
2000 mm	2100 – 3000 mm	350 – 800 mm	≈ 954 mm	≈ 1377 mm	2060 mm
2100 mm	2100 – 3000 mm	350 – 800 mm	≈ 1002 mm	≈ 1446 mm	2160 mm
2200 mm	2100 – 3000 mm	350 – 800 mm	≈ 1050 mm	≈ 1514 mm	2260 mm

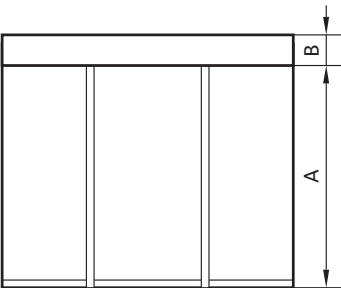
Special versions available on request.



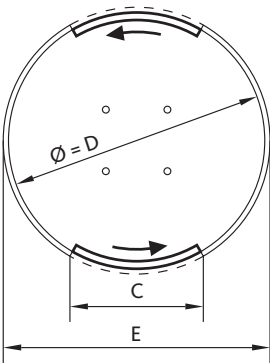
GSI security curved sliding door

Controlled physical access in the tightest spaces

The GSI security curved sliding door's minimal diameter of only one meter provides controlled physical access in the tightest of spaces. A 2-zone contact floor mat is used to monitor the passage area in the pass-through direction. In their initial position, the sliding doors are securely locked. If an authorised person is identified by an access control system, the door opens automatically. Once the person has entered the cabin and triggered the contact mat, the door closes and the opposite door opens automatically until the cabin is vacated. In the event of unauthorised entry into the cabin, the process is interrupted.



GSI security curved sliding door



The GU standard				
GSI security curved sliding door				
D	A	B	C	E
1000 mm	2100 – 3000 mm	350 – 800 mm	≈ 500 mm	1060 mm
1300 mm	2100 – 3000 mm	350 – 800 mm	≈ 600 mm	1360 mm
1500 mm	2100 – 3000 mm	350 – 800 mm	≈ 700 mm	1560 mm
Special versions available on request.				

Systematic Service



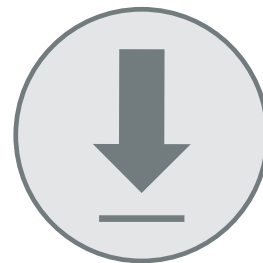
Planning support

The basis for secure and efficient controlled physical access systems: GU Group provides architects and planners with comprehensive support right from the planning stage. In close collaboration with the customer, comprehensive cross-trade concepts tailored to the individual building requirements are developed. These take into account the safety of the building and occupants and barrier-freedom, comfort and aesthetics in equal measure.



Building project consulting

Simplifies everyday work: covering every aspect of controlled physical access, building project consulting assists architects and planners with project-specific drawings and door schedules, cable diagrams and tender specifications or conceptual designs with functional descriptions, for example. Well thought-out and coordinated system solutions guarantee functionality and compliance with the required standards and directives.



Free download

To make planning easier: a wide range of information on the products and applications is available to download from the company website to the local hard drive quickly, conveniently and free of charge: from product documents and installation drawings to Declarations of Performance through to software solutions.

A product on its own is not a solution. The right security, function and cost-effectiveness can only be achieved with the right planning and by ensuring correct application. GU Group therefore also rigorously applies the systematic thought processes involved in the development of its product range to its service offering. One-to-one expert advice, free online support and a comprehensive programme of technical seminars aims to make the day-to-day work of architects and planners easier.



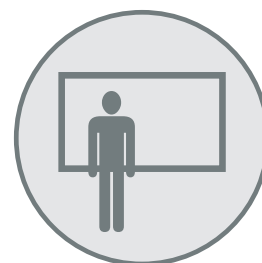
Tender-Text-Manager

Comprehensive, legally sound and technically up-to-date: with the AusschreibungsManager, GU Group is offering architects and planners a convenient and effective online tool that allows them to effortlessly compile technical specifications and complete tender specifications – for all GU Group products.



Hotline for architects

The building project consultants at the hotline for architects provide personal expert advice on all planning questions and can provide detailed information on GU Group products: by telephone +49 (0)2051/201-2000, e-mail objektberatung@g-u.de or using the form at the company website www.g-u.com



Seminars and training courses

Practical knowledge based on first-hand experience: with around 160 events annually, the GU group offers an extremely wide range of seminars and training courses. The programme includes product innovations and their applications, current architectural trends and standards and directives. Several seminars and training courses are certified and recognised as advanced training courses by the chambers of architects and civil engineers in Germany.

Exclusion of liability

The information provided in this publication consists of product descriptions. This is general information based on our experience and tests and therefore does not take any specific application into account. No claims for compensation can be made on the basis of the product descriptions.

Although we have made every attempt to ensure the information provided here is accurate, it is non-binding. It should be adapted to the respective construction projects, usage and specific on-site demands.

The publication has been compiled to the best of our knowledge. The Gretschi-Unitas Group accepts no liability for any errors. The document is subject to modifications during the course of technical developments.

The product images shown in the publication may differ from the actual product.

Copyright notice

© All illustrations and texts in this publication are protected by copyright. Unless otherwise stated in the image credits, the rights belong to the Gretschi-Unitas Group. Any use of copyright protected materials without the consent of the holder of the rights is prohibited.

Image credits

Page 1	Person photos (from left to right): Three businessmen standing at reception desk in hotel lobby provided courtesy of Photodisc collection / Getty Images, Businessman Using Pass to Enter Office provided courtesy of Cultura collection / Getty Images, Indian businesswoman in formal clothing walking with wheeled bag provided courtesy of Brand X Pictures collection / Getty Images
Pages 4/5	Person photos (from left to right): Three businessmen standing at reception desk in hotel lobby provided courtesy of Photodisc collection / Getty Images, Businessman Using Pass to Enter Office provided courtesy of Cultura collection / Getty Images, Indian businesswoman in formal clothing walking with wheeled bag provided courtesy of Brand X Pictures collection / Getty Images
Pages 16/17	Person photos (from left to right): Germany, Stuttgart, Businesswoman standing with diary, smiling provided courtesy of Brand X Pictures collection / Getty Images, Germany, Hannover, Businessman and businesswoman walking with briefcase at terminal provided courtesy of Getty Images
Pages 20/21	Photo of 'Gates/Terminal' sign: Airport sign provided courtesy of E+ collection / Getty Images
Pages 36/37	© EYE-SCREAM, Hansjörg Riedel

Publisher

Gretschi-Unitas GmbH
Baubeschläge
Johann-Maus-Str. 3
D-71254 Ditzingen
Tel. +49 (0) 71 56 3 01-0
Fax +49 (0) 71 56 3 01-293
www.g-u.com



WINDOW TECHNOLOGY
DOOR TECHNOLOGY
AUTOMATIC ENTRANCE SYSTEMS
BUILDING MANAGEMENT SYSTEMS

Gretsch-Unitas GmbH
Baubeschläge
Johann-Maus-Str. 3
D-71254 Ditzingen
Tel. + 49 (0) 71 56 3 01-0
Fax + 49 (0) 71 56 3 01-77 980

BKS GmbH
Heidestr. 71
D-42549 Velbert
Tel. + 49 (0) 20 51 2 01-0
Fax + 49 (0) 20 51 2 01-97 33

www.g-u.com

WP00457-04-4-2 04/2015 Printed in Germany

Securing technology for you

