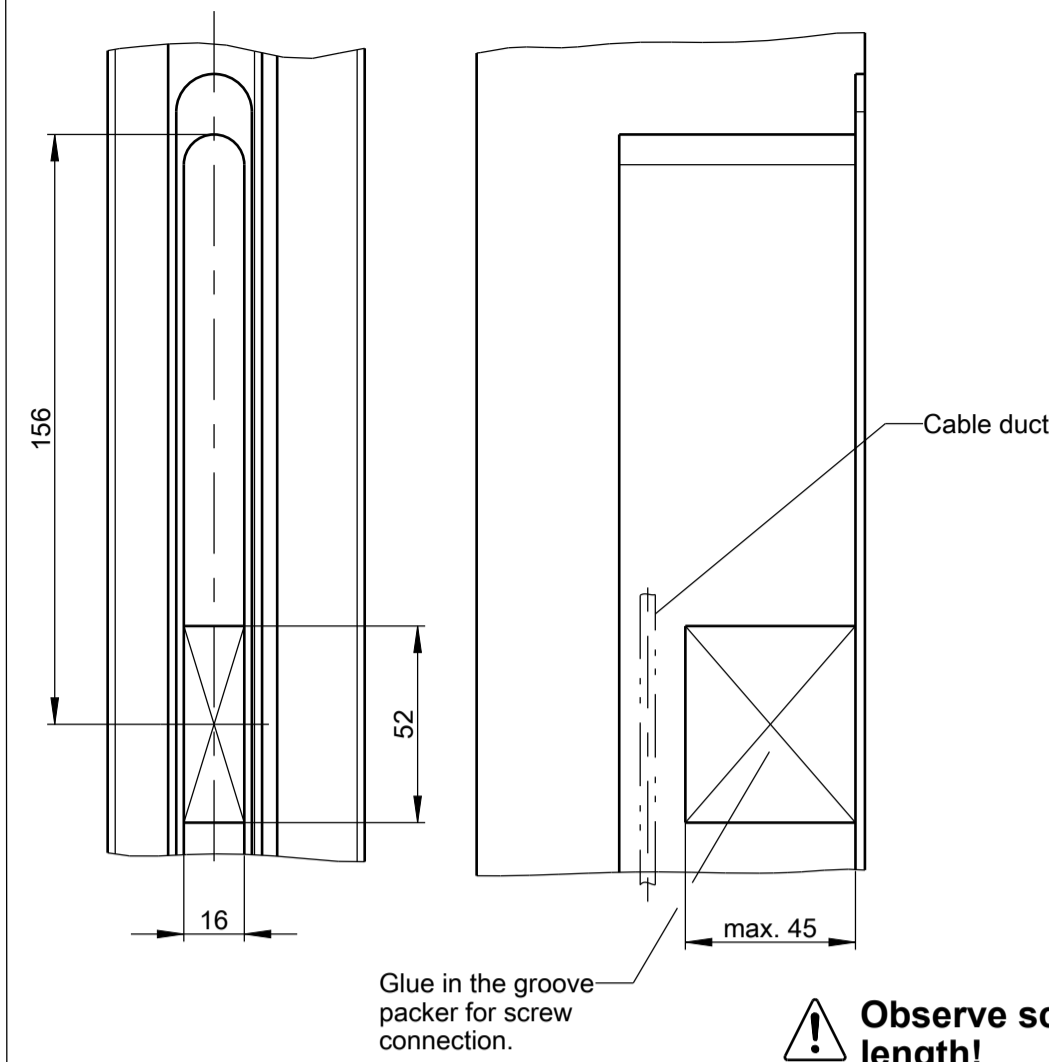
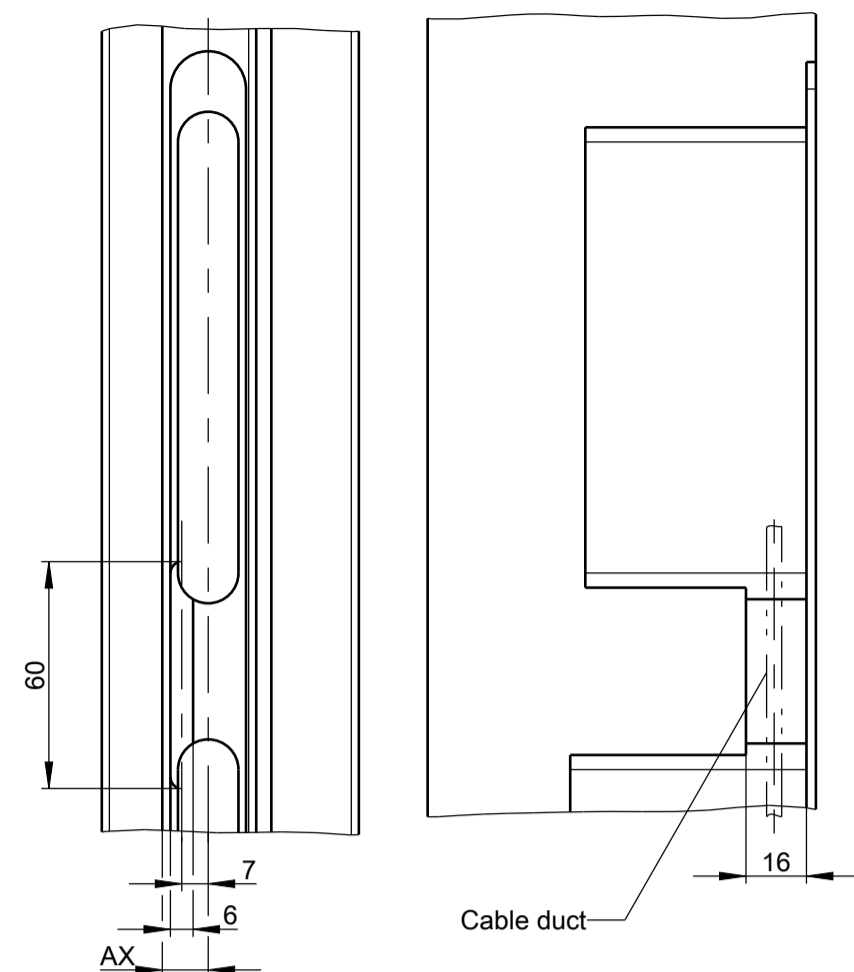


The documents accompanying the product were issued when the product was manufactured. We do not accept any liability for the accuracy of the technical documents. For more information, please contact our technical support.  
 EN FR ES RU  
 18

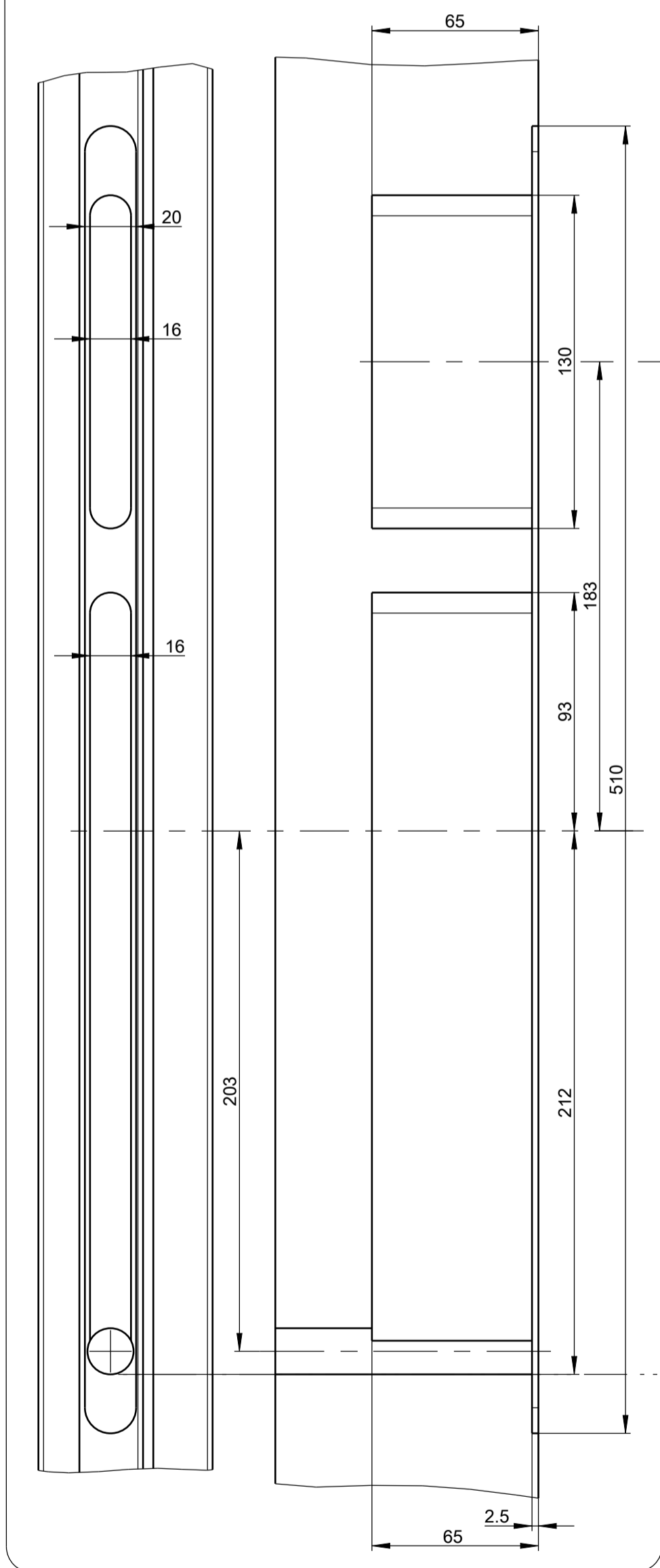
Version 1



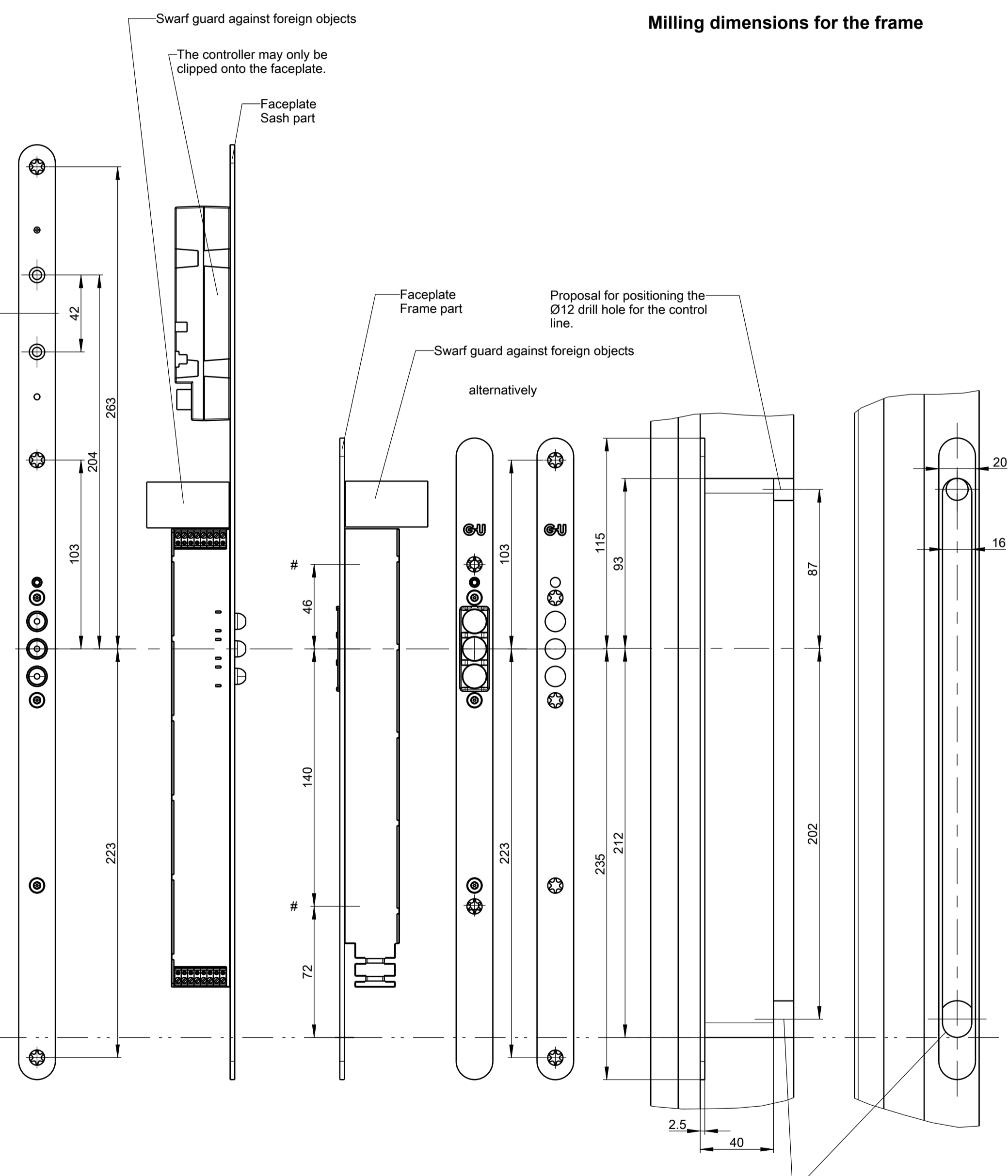
Version 2



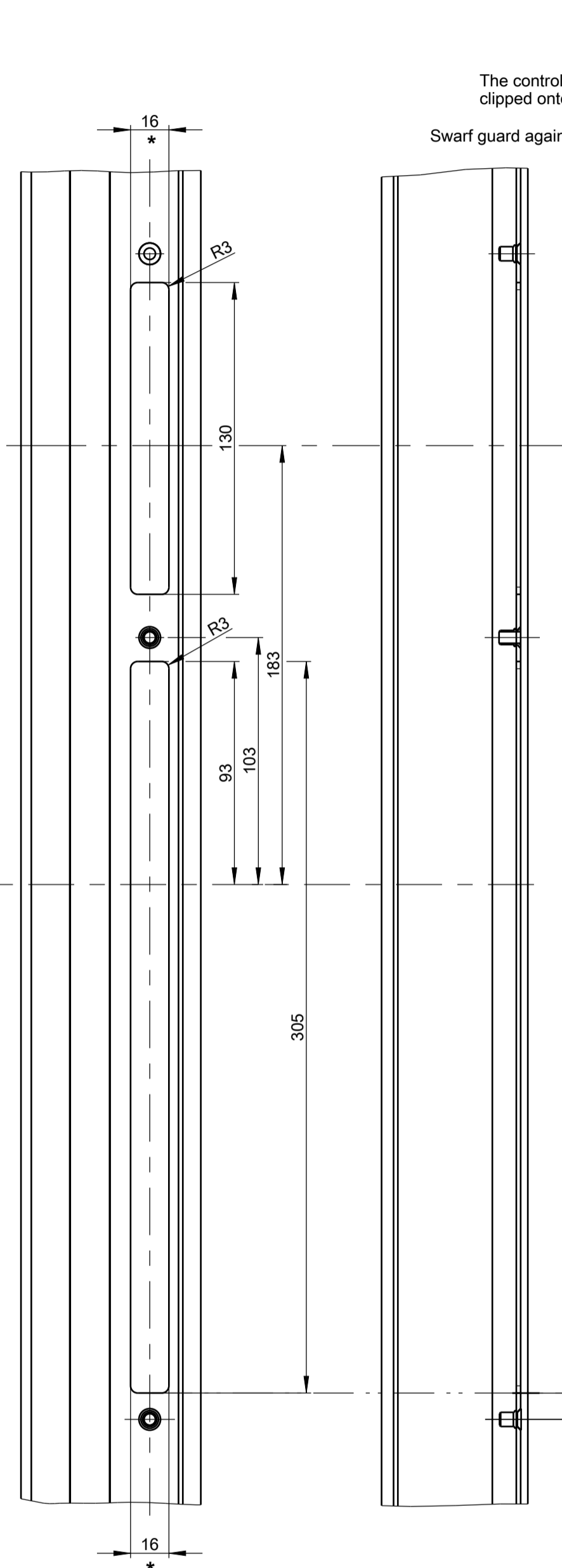
Milling dimensions for the frame



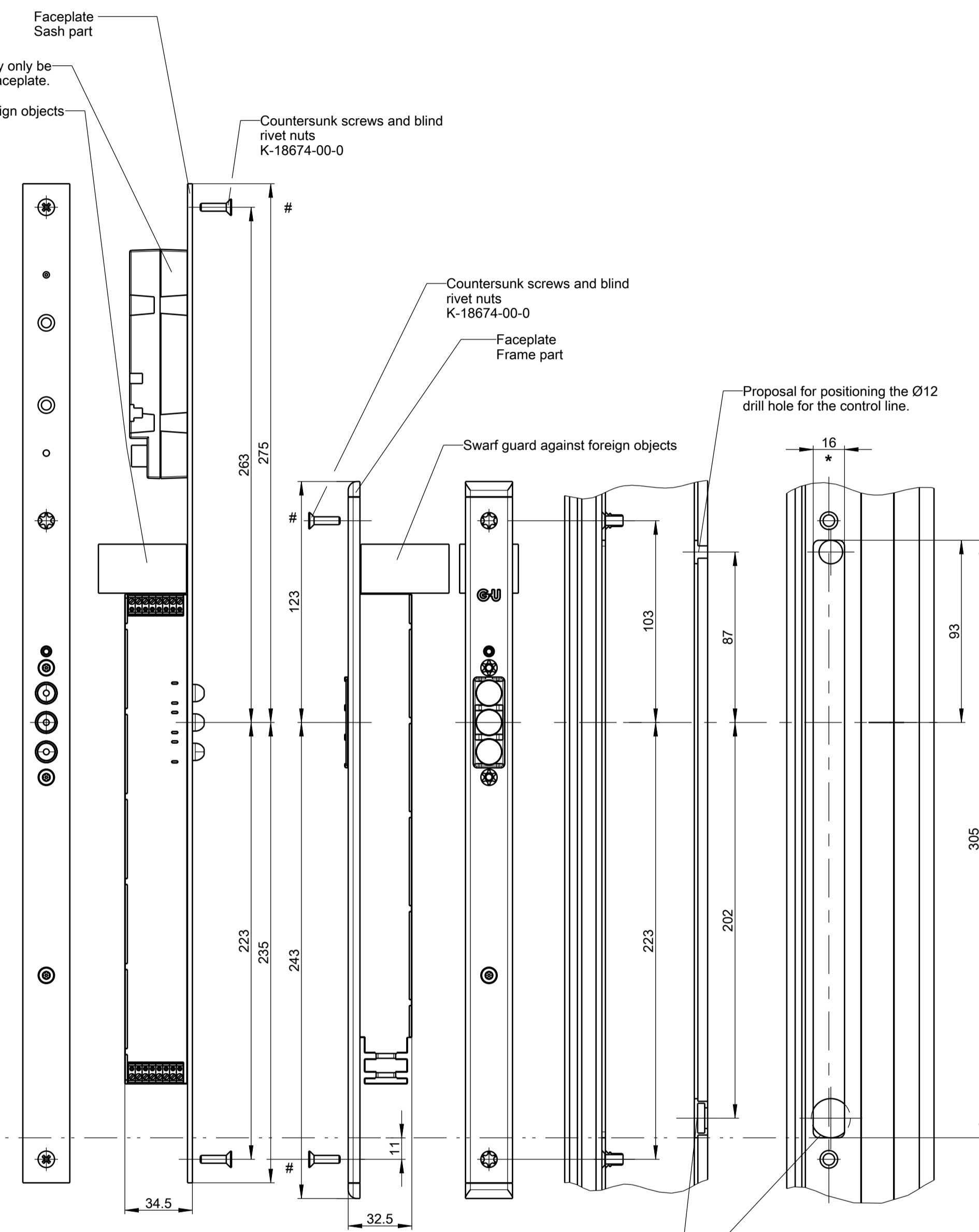
Milling dimensions for the frame



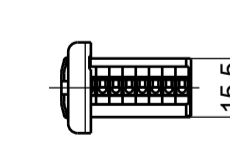
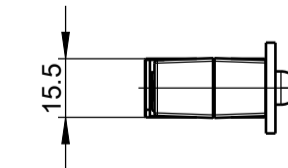
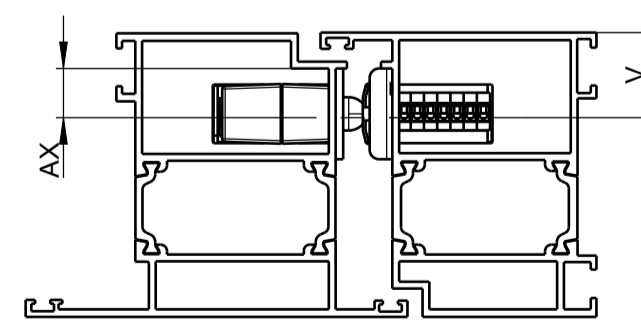
Milling dimensions for the door leaf



Milling dimensions for the frame



Aluminium profiles



# Mind the connecting cable in area of fixing holes!

\* For faceplate 16 aim at dimension 15.5

## Offset as required

\*\* Max. tightening torque: 1 Nm. Use enclosed screws only!

AX = axis  
V = lock position (depending on profile)

Description:  
SECUREconnect  
Neutral timber, PVC and aluminium profiles

# Mind the connecting cable in area of fixing holes!



\*\*\* Only for use with fingerprint scanner and cable relay  
Use fixing screws max. Ø 4.2 to install GU-SECURITY multi-point lock.

Proposal for positioning the Ø20 drill hole for the 230 V connecting cable (Drill from the side facing the wall, if possible.)

Attention

Proposal for positioning the Ø20 drill hole for the 230 V connecting cable. Attention: use enclosed cable sleeve to protect the cable.

Observe screw length!

Attention

The controller may only be clipped onto the faceplate.

Countersunk screws and blind rivet nuts K-18674-00-0

Countersunk screws and blind rivet nuts K-18674-00-0

Proposal for positioning the Ø12 drill hole for the control line.