



The documents accompanying the product are issued when the product was manufactured. You should verify the version of the documents. If the technical documents you have at hand are up to date, do not use the latest technical documents.

Proprietar rights reserved in accordance with ISO 9001.

EN FR ES RU

Mortise locks

Item	Description	Order no.	Remark
4A	GU-SECURITY Economy Flat faceplate = 16, 20, 24 U-faceplate = 24 x 6, 24 x 8 Backset BS = 35, 40, 45, 55 Hole distance HD = 92 (PC) Hole distance HD = 94 (RC) Follower □ 8	6-34224-XX	
13A	Multi-point lock BKS Series 13 Flat faceplate = 16 Backset BS = 35 Hole distance HD = 92 (PC) Hole distance HD = 94 (RC) Follower □ 8 / □ 9	See order catalogue. System solutions for narrow stile doors	
14G	Multi-point panic lock BKS Series 18		

GU-SECURITY multi-point lock range

Item	Description	Order no.	Remark
2 additional locking points			
1A	Multi-point lock with 2 latchbolts GU-SECURITY Automatic prepared for A-opener and prepared for safe-T-catch		
	Standard version L = 1750	Top locking position: 730 Bottom locking position: 760	
2A	Multi-point lock with 2 massive bolts GU-SECURITY MR2 prepared for safe-T-catch		
	Standard version L = 1750	Top locking position: 730 Bottom locking position: 760	
2B	Multi-point lock with 2 hook bolts GU-SECURITY SH2		
	Standard version L = 1750	Top locking position: 730 Bottom locking position: 760	
3 additional locking points			
1F	Multi-point lock with 3 latchbolts GU-SECURITY Automatic3 prepared for A-opener and prepared for safe-T-catch		
	Standard version L = 1750	Top locking position: 730 Bottom locking position: 250 / 760	
4 additional locking points			
2F	Multi-point lock with 4 massive bolts GU-SECURITY MR4		
	Standard version L = 1750	Top locking position: 300 / 730 Bottom locking position: 250 / 760	
2G	Multi-point lock with 4 hook bolts GU-SECURITY SH4		
	Standard version L = 1750	Top locking position: 300 / 730 Bottom locking position: 250 / 760	
2 additional locking points			
1B	Multi-point lock with 2 double latchbolts GU-SECURITY Automatic4 prepared for A-opener and prepared for safe-T-catch		
	Standard version L = 1750	Top locking position: 730 Bottom locking position: 760	
1L	Multi-point lock with 2 Automatic double bolts Automatic double bolt prepared for A-opener and prepared for safe-T-catch		
	Standard version L = 1750	Top locking position: 730 Bottom locking position: 760	
2C	Multi-point lock with 2 double bolts GU-SECURITY DR and prepared for safe-T-catch		
	Standard version L = 1750	Top locking position: 730 Bottom locking position: 760	
3 additional locking points			
1G	Multi-point lock with 3 double latchbolts GU-SECURITY Automatic6 prepared for A-opener and prepared for safe-T-catch		
	Standard version L = 1750	Top locking position: 730 Bottom locking position: 250 / 760	
See order catalogue for further locking positions.			

Flat faceplate = 16, 20, 24
U-faceplate = 24 x 6, 24 x 8
Backset BS = 35, 40, 45, 55
Hole distance HD = 92 (PC)
Hole distance HD = 94 (RC)
Follower □ 8

See order catalogue.

SECURITY accessories

Item	Description	Order no.	Remark
8.1A	Latch&deadbolt striker with ILP, height 6 or 8 mm	See order catalogue.	
8.1B#	Latch&deadbolt striker, concealed		
9.1A	Automatic and MR striker with concealed adjustment		
9.1B	SH striker with concealed adjustment		
9.1C	Automatic4, DR and Automatic-DR striker with concealed adjustment		
9.1D	Automatic/MR striker with surface-mounted adjustment		
9.1E	SH striker with surface-mounted adjustment		
9.1F	Automatic4, DR, Automatic-DR striker with surface-mounted adjustment		
9.5A	Striker		
10A	Automatic4, DR and Automatic-DR one-piece striker with concealed adjustment		
10B	One-piece striker with surface-mounted adjustment for Automatic4, DR and Automatic-DR		
11A	Safe-T-catch striker (6 mm high) depending on profile system		
11B	Safe-T-catch striker (8 mm high) depending on profile		
29A	Floor striker B-00280	B-00280-00	
29B	Floor striker B 9009	B 9009 0001	
29C	Floor socket	9-29525-00	
51A	Striker with monitoring contact	(available on request)	
51B	Deadbolt monitoring contact for deadbolt cutout	K-19068-00	
60	Safe-T-catch turn knob	6-29244-00	
	Safe-T-catch turn knob (stainless steel)	B-70709-00-0-1	
61	Drilling-jigs	B-70709-00-0-3	
62	Cover plate for latchbolt	9-40010-00	
63A	Deadbolt cover (Depth: 20)	9-48553-03	
64B	Deadbolt cover (Depth: 17)	9-50849-01	
65A	Electric strike GU-BKS ET 8	See order catalogue.	
67	Hinge-side locking device, frame part	6-40394-XX	
68	Hinge-side locking device, leaf part	6-37515-XX	
75C	Cover cap	E-18819-00	
76A	A-opener kit (universal)	K-18153-01	
76B	A-opener kit servo (universal)	K-19020-01	
77	Cable link, detachable, concealed	See order catalogue.	
78	Cable link, accessories		
79A	SECUREconnect 200 set	B-55600-20	
79B	SECUREconnect 50 set	B-55600-34	
80	SECUREconnect U-faceplate with moulding, frame part	6-35513-99	
81	SECUREconnect faceplate	9-45903-99	
82	System threshold		
83	House entrance door hinge GU G 816 F 100		
83A	House entrance door hinge GU R 816 3D		
92A	L0.2 striker (6 mm high) depending on profile	6-37632-1A	
93A	Striker (6 mm high) depending on profile	6-31552-1A	
93B	Striker (5 mm high) depending on profile	6-32022-1A	
94C	Shoot-bolt	6-28759-XX	
100A	Extension with Automatic MR and SH Installation instructions	6-37394-XX 0-47332-L0	
101A	Extension with MR bolt Installation instructions	6-37395-XX 0-47332-L0	
102A	Extension with SH bolt Installation instructions	6-37396-XX 0-47332-L0	
103A	Extension with Automatic4, DR and Automatic-DR Installation instructions	6-37397-XX 0-47332-L0	
104A	Top extension piece	9-48687-XX	
105A	Bottom extension piece	9-48686-XX	
110A	Extension with DR bolt Installation instructions	6-37398-XX 0-47332-L0	
134A	Safe-T-catch set 8 Installation instructions	K-20085-XX 0-48664-L0	
134B	Safe-T-catch set 11 Installation instructions	K-20086-XX 0-48664-L0	
135A	Extension with Automatic-DR Installation instructions	6-40488-XX 0-47332-L0	

Optional part

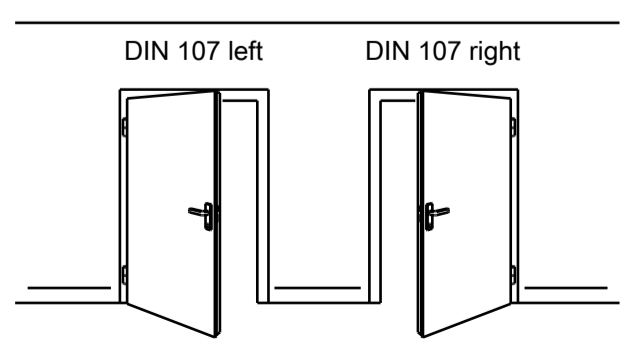
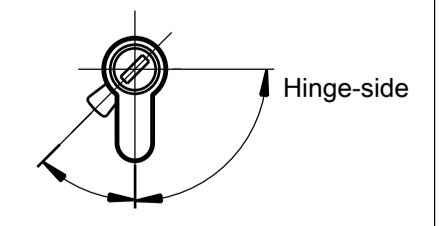
The product guidelines of the profile manufacturer regarding construction, assembly, max. sash dimensions, max. sash weights and material qualities (e.g. linear profile expansion) are to be observed.

For RC-tested elements, the additional locking elements and the lock case may have to be backfilled at the side and rear to absorb high forces. Depending on the profile system and material properties, the pressure-resistant backfill must be individually adapted.

For mounting and operating a SECURITY multi-point lock, the following advice must be observed:

- Installation according to GU drawing only.
- L0.2 striker and strikers must be exactly aligned with each other.
- The use of latch&deadbolt strikers with adjustable interchangeable latch piece is only permitted if adjustable strikers are used for the Automatic locking elements.
- If the interchangeable latch piece requires adjustment, the strikers must be justified accordingly.
- Ensure that the locking elements enter into the strikers freely.
- With the door open, it is possible to check the lock for proper functioning as follows:
Release the locking elements by pushing the trigger lever:
Once the door is shut, the locking elements must throw 20 mm.
Now the locking elements must be secured against being pushed back (test by trying to do so).
Do not forget to withdraw the locking elements again using the lever handle (latch lever) after testing.
- Use appropriate securing devices to transport the door.

Attention!
For profile cylinders with 90° locking cam position: after the installation the cam must point to the hinge-side.
With the key withdrawn, the locking cam position must comply with DIN 18252.



Attention!
The three-dimensional depictions of the hardware components are not true to scale.
Drilling dimensions may vary with special locking point positions.

Do not use drilling screws to fasten the multi-point lock because drilling chips might enter the lock!

For further product information and advice on the use of locks and hardware see GU order catalogue and maintenance information 709-07423.

Details regarding the daytime release function (only available for GU-SECURITY Automatic) can be found at www.tagesentriegelung.de

The profile sections shown are non-committal suggestions.

Reversing the latch:
GU-SECURITY manual-locking systems: See adhesive label on lock case.
GU-SECURITY Automatic: See adhesive label on central and additional lock case

AX = axis
V = lock position (depending on profile)

- Use fixing screws max. Ø 4.2 to install GU-SECURITY multi-point lock.
- Use fixing screws max. Ø 4.5 to install GU-SECURITY accessories.
The responsibility for safe and durable hardware fastening lies with the door fabricator.

GU-SECURITY lever-operated gear

Item	Description	Door-leaf rebate height	Top locking position	Lever-operated gear, uncropped	Shoot-bolt unit				Order no.	Remark
	alternatively				130	270	520	770		
31A	Automatic lever-operated gear Also suitable for MR and SH bolts Axis 12 (26 x 8)	1850-2110 2111-2250 2000-2260	580	1850	2	--	--	--		
		2261-2400	730	2000	1	1	--	--		
31C	Automatic3 lever-operated gear Axis 12 (26 x 8)	2185-2445 2446-2585 2586-2835 2836-3085	915	2185	2	--	--	--		
		2446-2585			1	1	--	--		
		2586-2835			1	--	1	--		
		2836-3085			1	--	--	1		
31B	Automatic4 lever-operated gear Also suitable for DR and Automatic-DR bolts Axis 12 (26 x 8)	1880-2110 2111-2250 2030-2260 2261-2400	580	1850	2	--	--	--		See order catalogue.
		2261-2400	730	2000	1	1	--	--		
31D	Automatic6 lever-operated gear Axis 12 (26 x 8)	2215-2445 2446-2585 2605-2835 2855-3085	915	2215	2	--	--	--		
		2446-2585			1	1	--	--		
		2605-2835			1	--	1	--		
		2855-3085			1	--	--	1		
32A	Shoot-bolt unit	Length = 130								
32B	Shoot-bolt unit	Length = 270								
32C	Shoot-bolt unit	Length = 520								
32D	Shoot-bolt unit	Length = 770								
32E	Shoot-bolt unit	Length = 160								Add 30 mm to sash rebate height!
33A	Striker for lever-operated gear									6-35579-XX
34A	Striker for GU system threshold									6-39094-XX
34B	Striker for GU system threshold									6-34877-XX
36A	Drip rail									
38	Lip seal									
45A	Brush seal									
82	System threshold									See order catalogue.
111A	Extension with Automatic MR and SH	Length = 500								6-37596-XX
112A	Extension with Automatic4, DR and Automatic-DR	Length = 500								6-37597-XX
111B	Extension with Automatic MR and SH	Length = 800								6-37598-XX
112B	Extension with Automatic4, DR and Automatic-DR	Length = 800								6-37599-XX

Lever-operated shoot-bolt lock

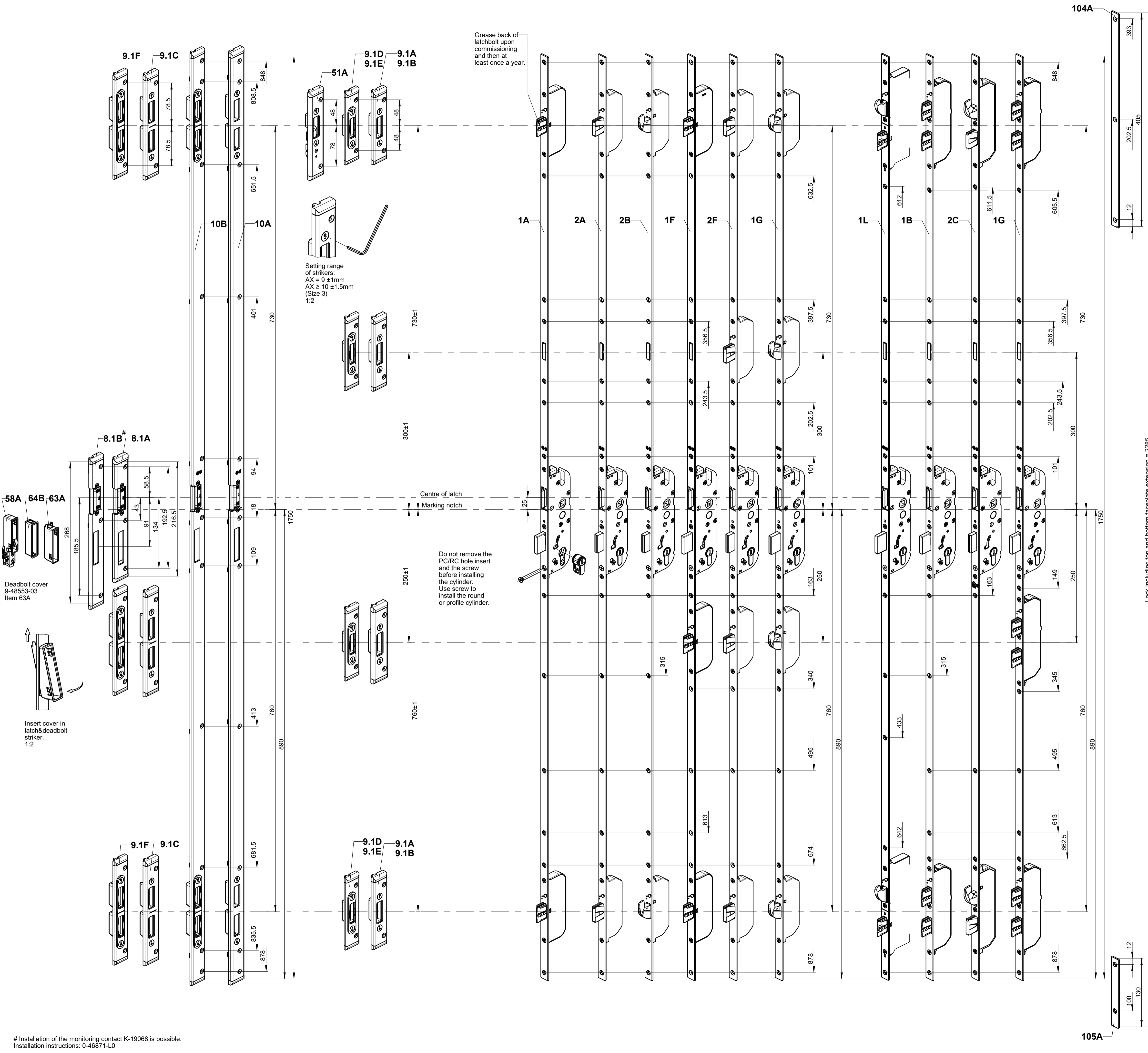
Item	Description	Order no.	Remark
20B	Passive-leaf control lock B 1895	B 1895 00XX	
23	Lever-operated shoot-bolt lock 1899	B 1899 0210	
27	Guide plate for vertical rod	B 9019 0001	
29A	Floor striker B-00280	B-00280-00	
29B	Floor striker B 9009	B 9009 0001	
30A	Solid vertical rod	Rod length: 437 B 9006 0001 687 B 9006 0002 937 B 9006 0003 1187 B 9006 0004 1487 B 9006 0005 1987 B 9006 0006 2487 B 9006 0007 2987 B 9006 0008	
30B	B 9006 vertical rod	Rod length: 450 B 9006 0009 700 B 9006 0010 760 B 9006 0018 1200 B 9006 0012 1500 B 9006 0013 2000 B 9006 0014 2500 B 9006 0015 3000 B 9006 0016	
47	Floor striker	K-19192-XX	

Sheet	Content
Sheet 2	Mortise locks
Sheet 3	SECURITY system technology L = 1750
Sheet 4	Lever-operated gear
Sheet 5	Shoot-bolt
Sheet 6	Lever-operated shoot-bolt lock
Sheet 7	Sectional views of multi-point locks
Sheet 8	Sectional views of multi-point locks
Sheet 9	Accessories

XX Size depending on profile, refer to GU order catalogue.
Installation of the monitoring contact K-19068 is possible.
Installation instructions: 0-46871-L0

Parts list

Description	Date	Change No.	Sig	Ver.	Replacement for	Revision	Iteration	Level	Scale	Drawing No.	Size	Sheet
GU-BKS multi-point lock Neutral PVC profiles	22.07.2020	G37853	Ne	--		15	7	Released	%	0-43690-L0-0-EN	A1	1/9

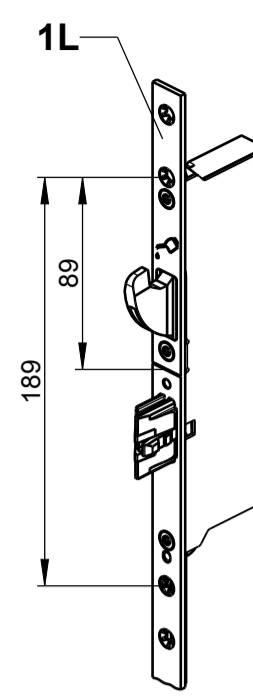


Grease back of latchbolt upon commissioning and then at least once a year.

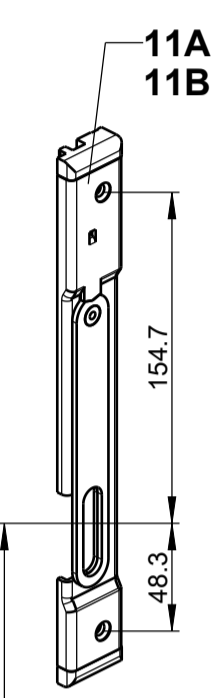
Setting range of strikers:
 AX = 9 ± 1mm
 AX = 10 ± 1.5mm
 (Size 3)
 1:2

Do not remove the PC/RC hole insert and the screw before installing the cylinder. Use screw to install the round or profile cylinder.

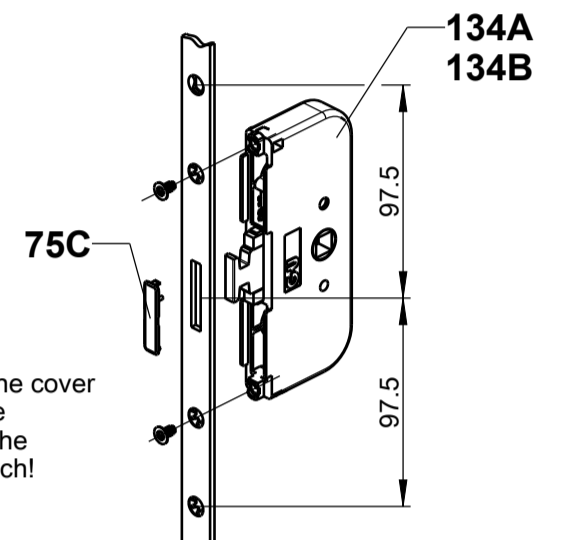
Lock including top and bottom faceplate extension = 2285



Mounting holes are required for RC4-compatible locks and must be provided by the customer. The associated frame-side accessories must be positioned such that the hook bolt overlaps as much as possible with the accessories on the frame side.

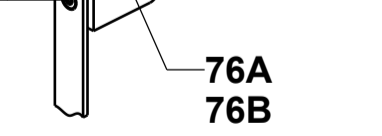


Remove the cover cap before installing the safe-T-catch!



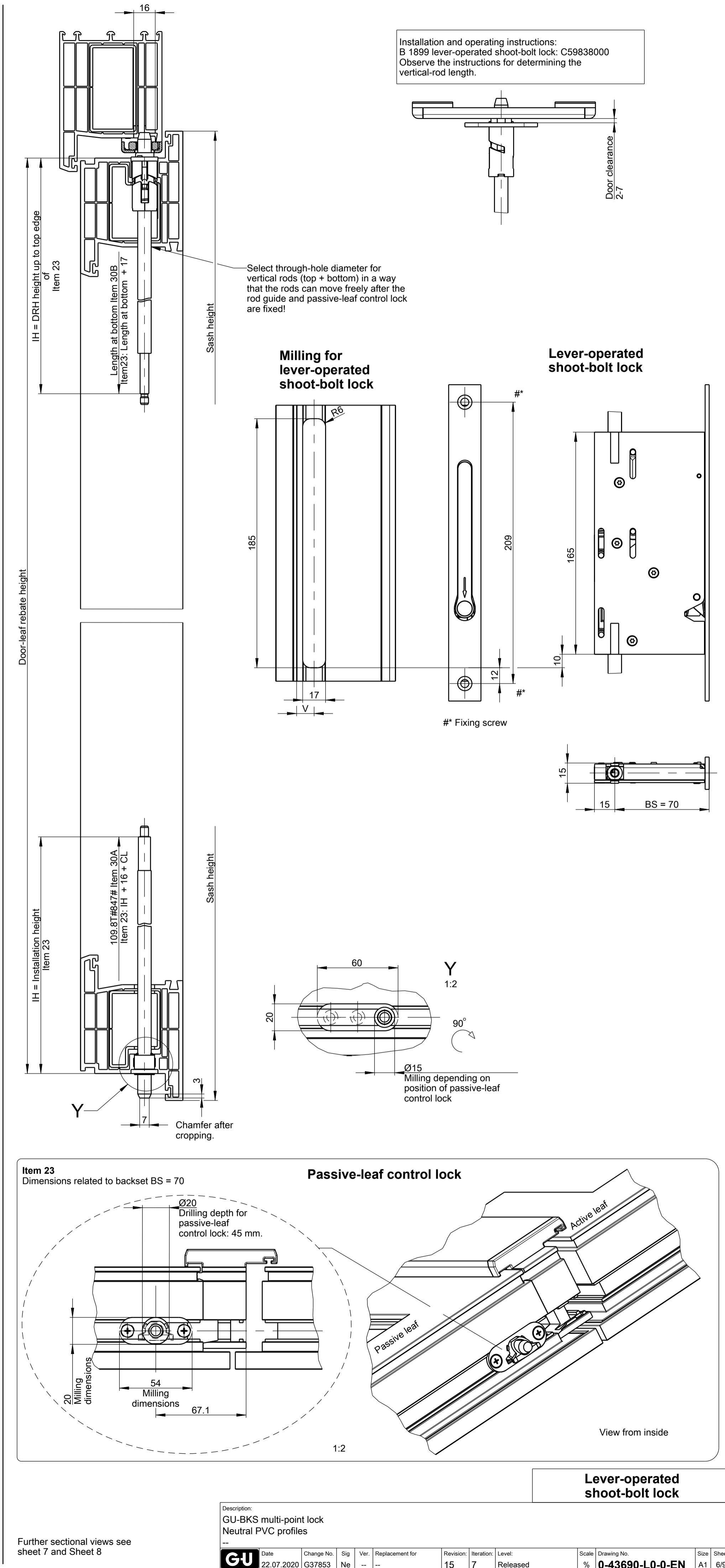
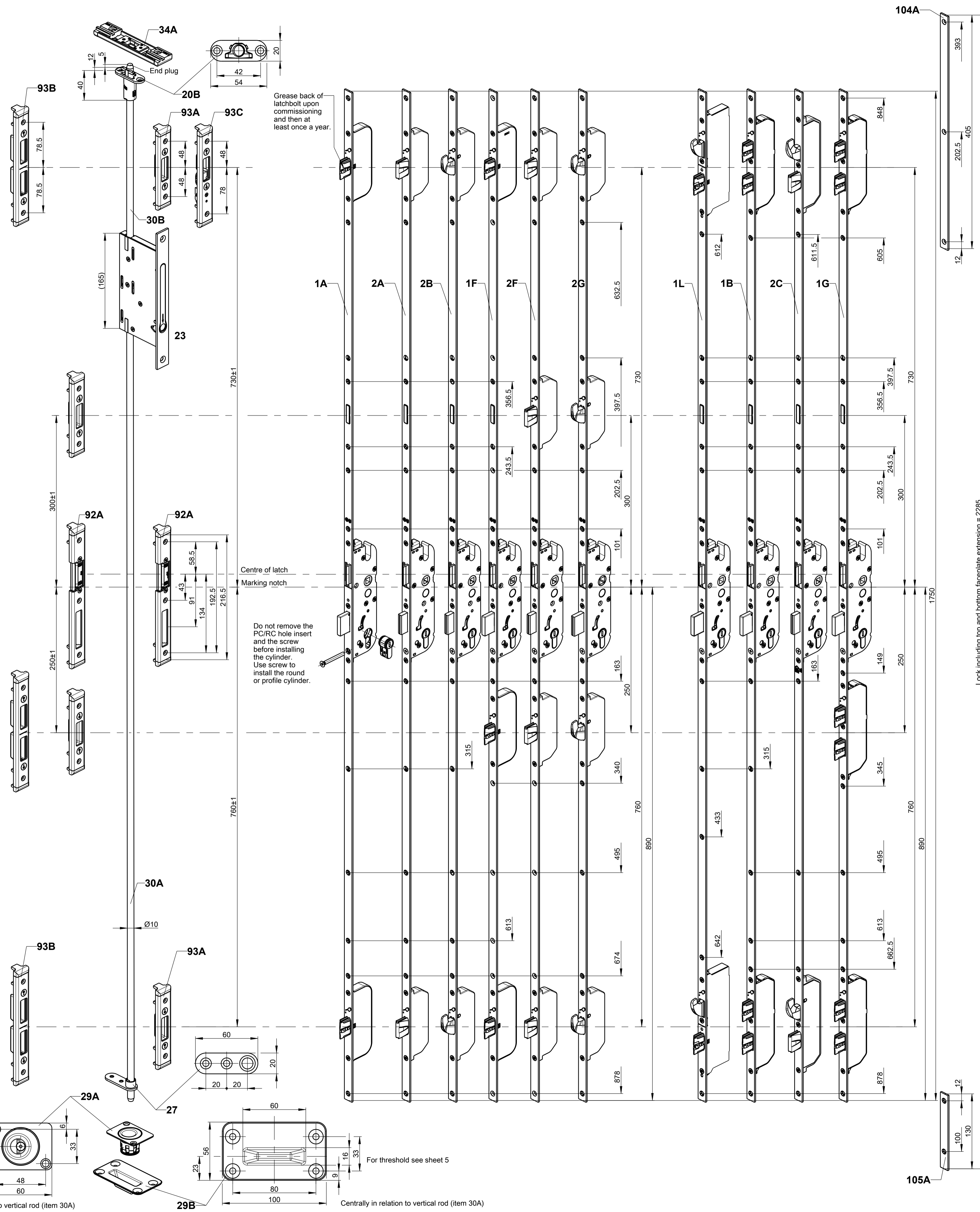
Optional: GU-SECURY with safe-T-catch (prepared for safe-T-catch)

Optionally with item 1A, 1B, 1F, 1G

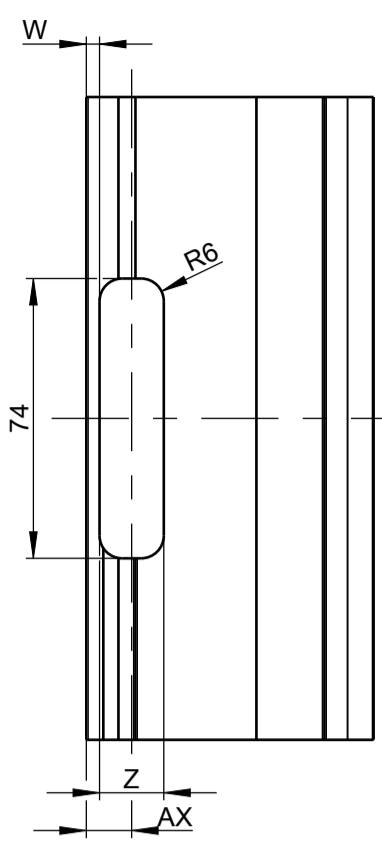


For optional installation of A-opener/A-opener servo with connecting cable and plug refer to installation instructions 0-45777-L0.

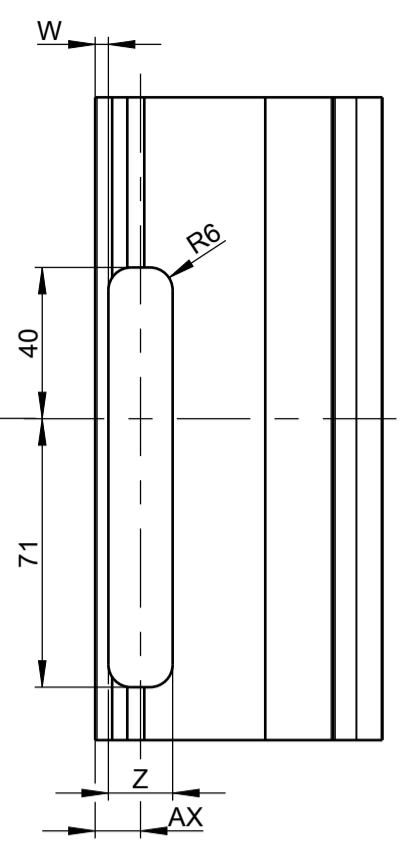
SECURY system technology
 L = 1750



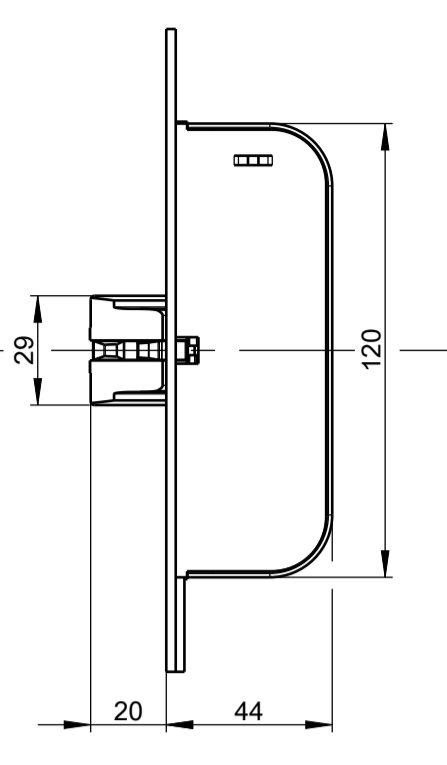
Frame milling for striker
Item 9.1A, 9.1B
9.1D, 9.1E



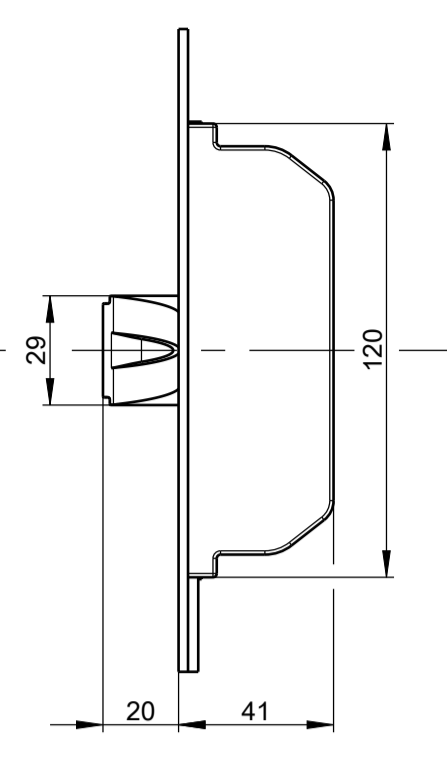
Frame milling for striker
with monitoring contact
Item 51A



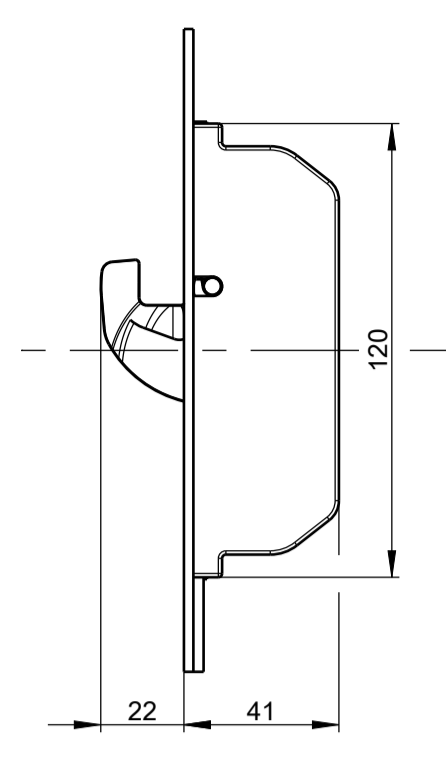
Latchbolt



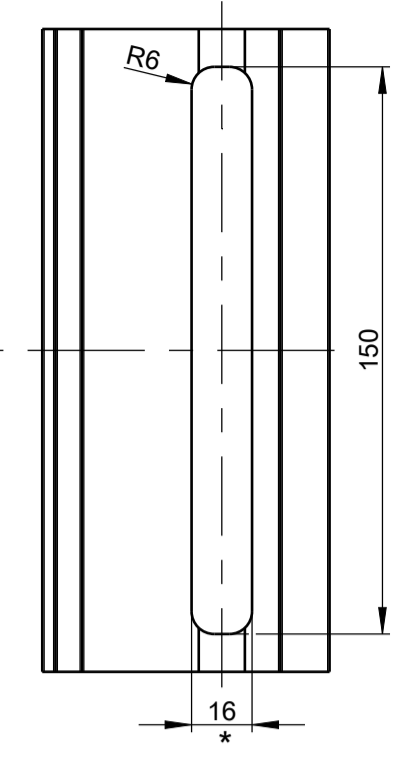
Massive bolt (MR)



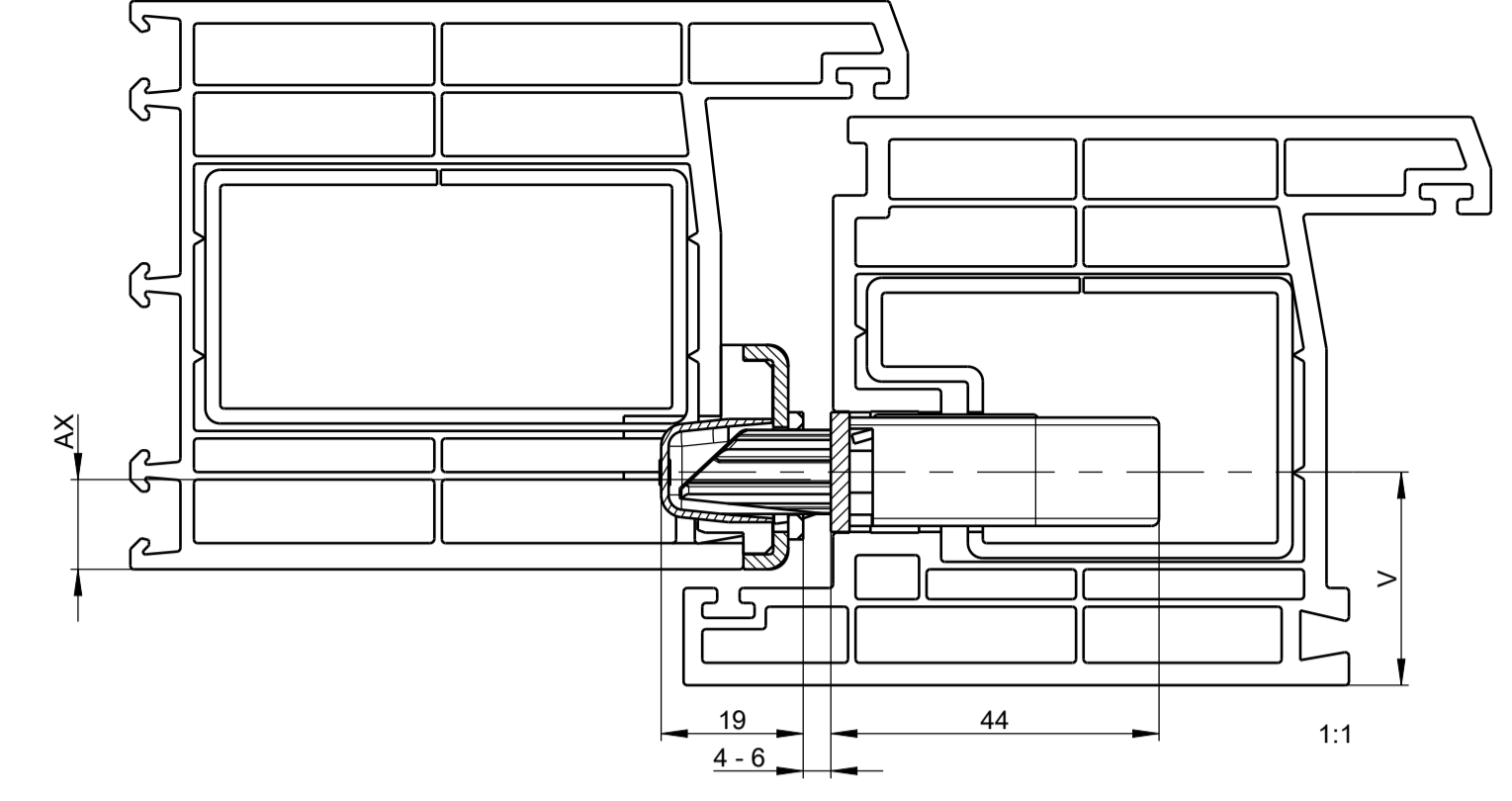
Hook bolt (SH)



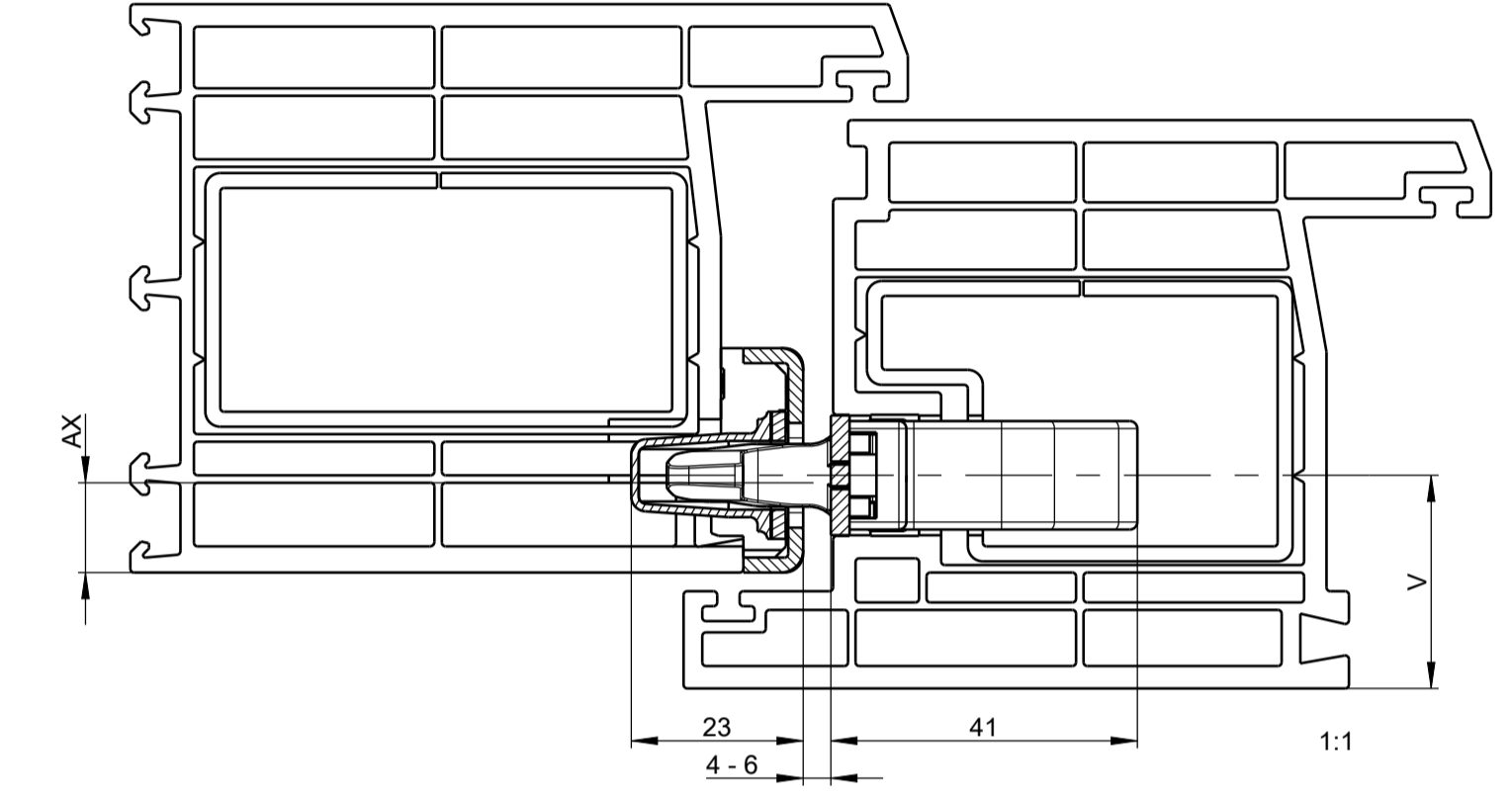
Leaf milling for
latchbolt, massive bolt
and hook bolt



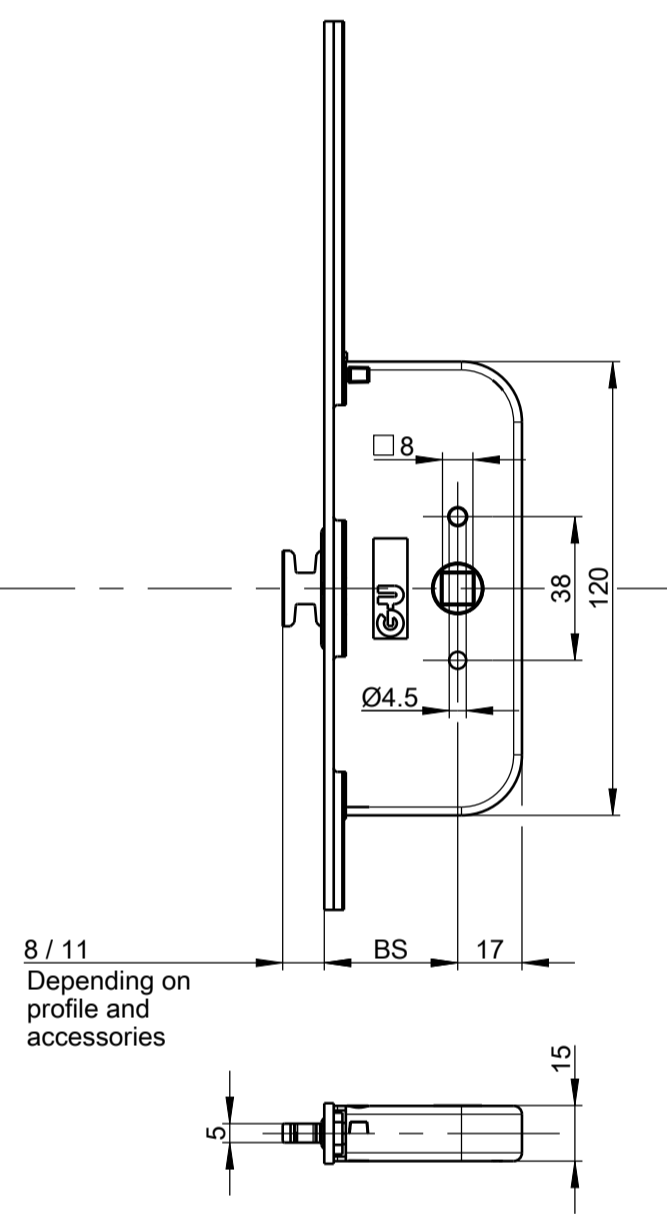
Latchbolt
Strikers/One-piece strikers, surface-mounted (AX < 12)



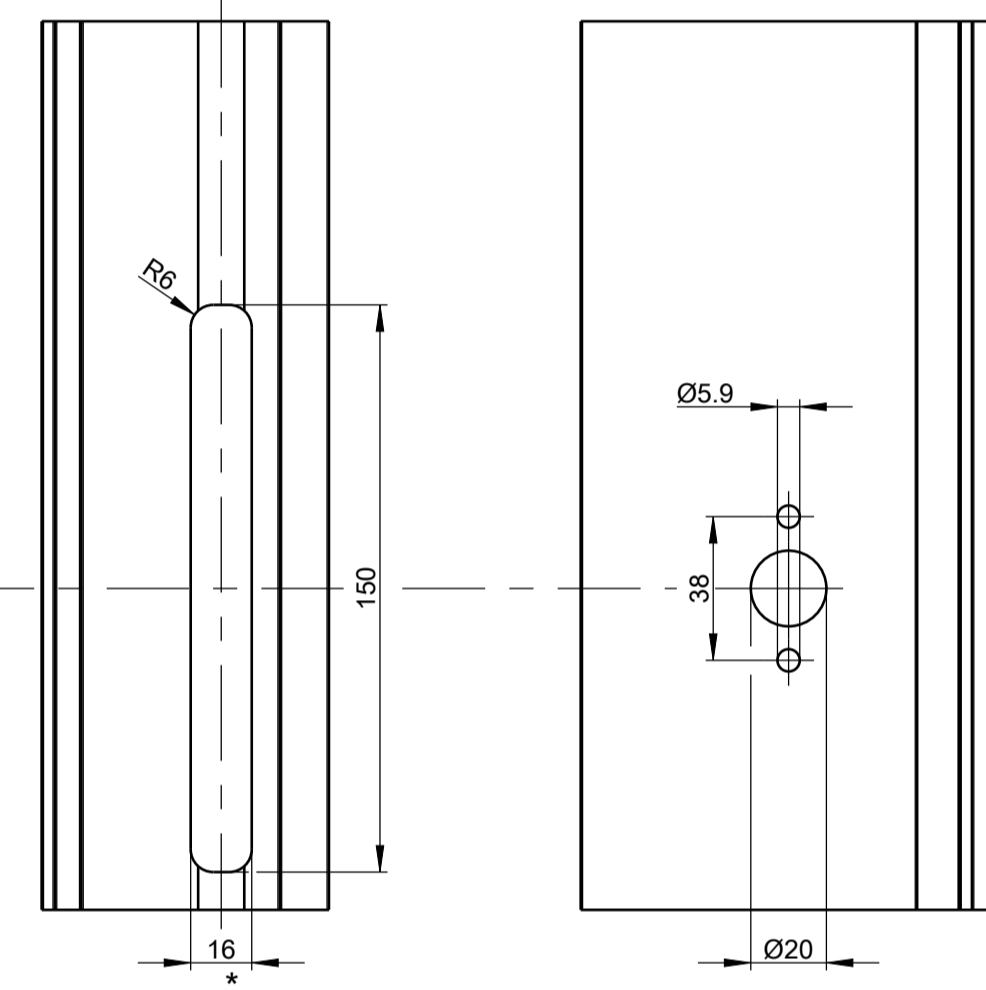
Hook bolt (SH)
Strikers/One-piece strikers, concealed (AX ≥ 12)



Safe-T-catch lock

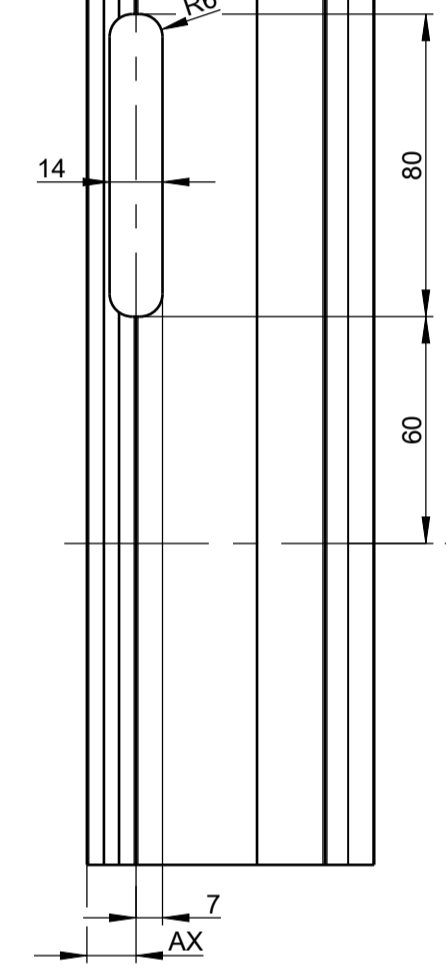


Leaf milling for safe-T-catch lock

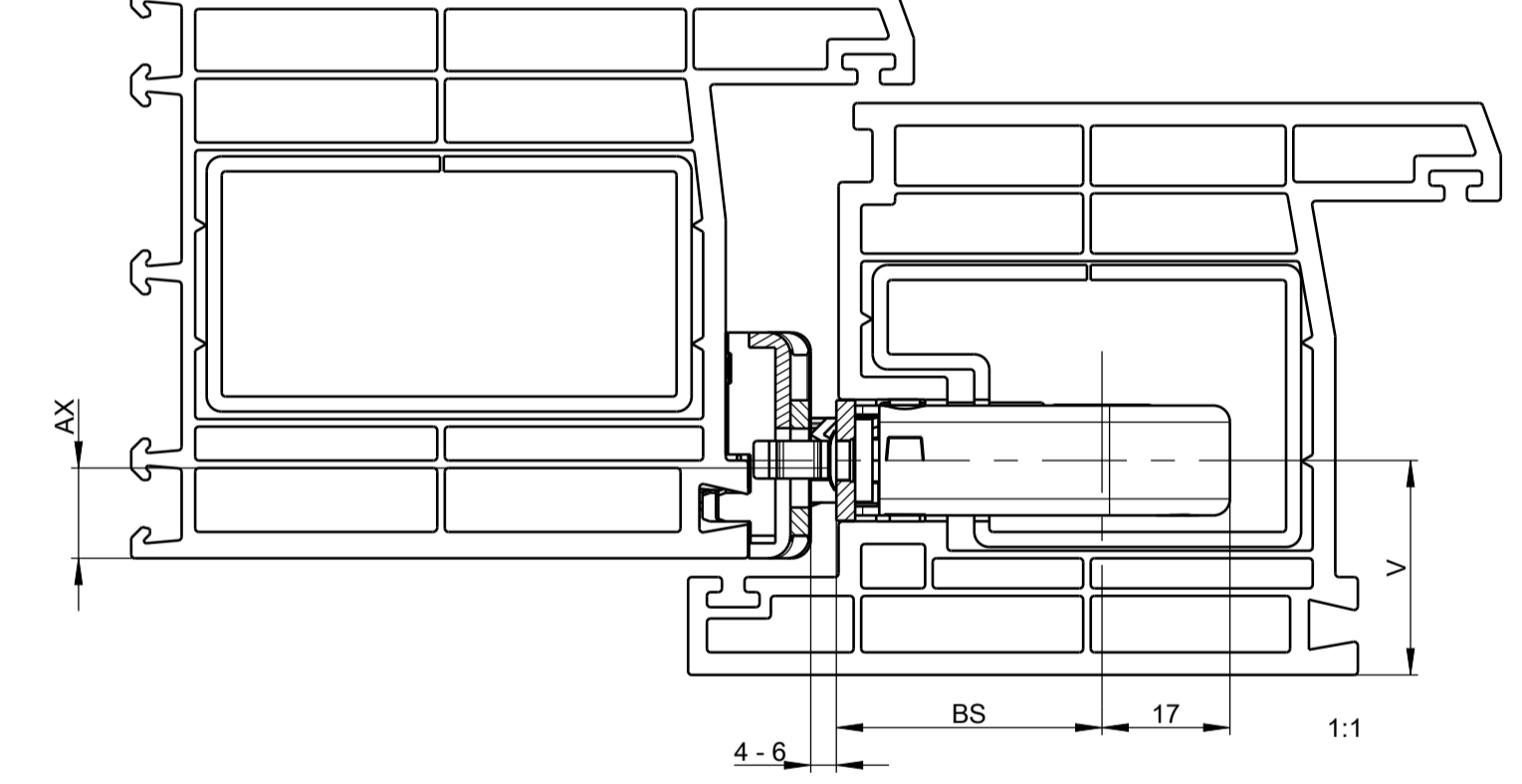


! Only cut out the optional safe-T-catch if it is also to be fitted!

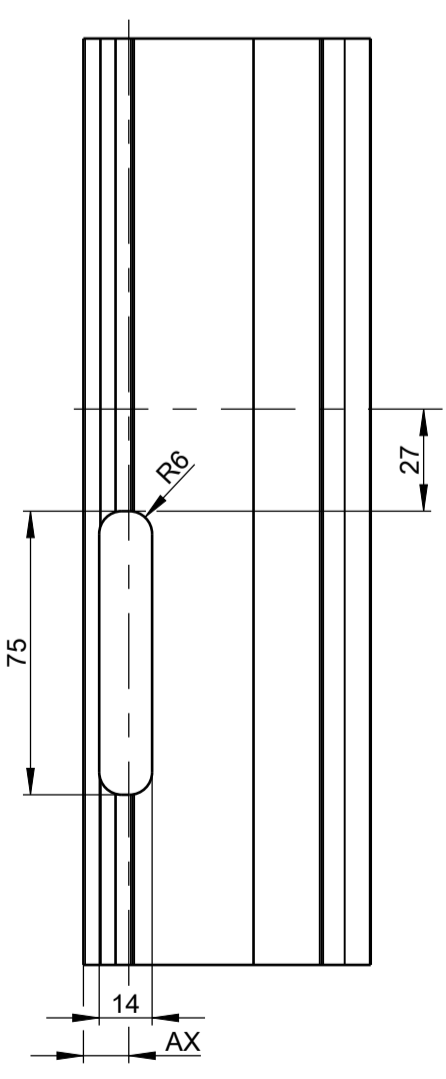
Frame milling for safe-T-catch
striker
Item 11A, 11B



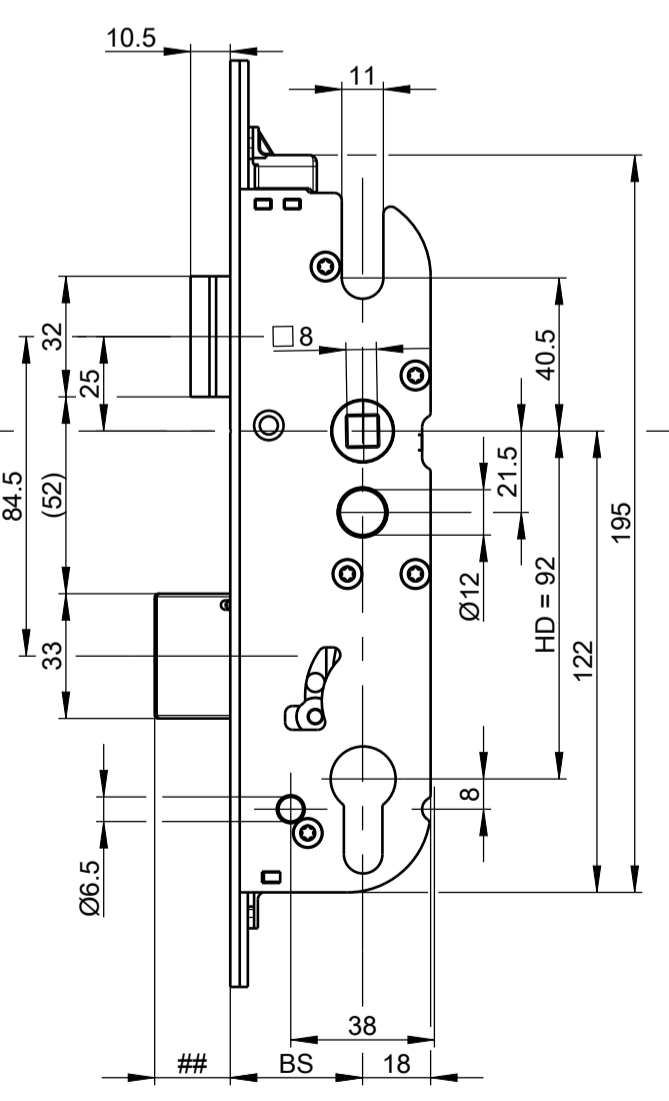
Safe-T-catch lock



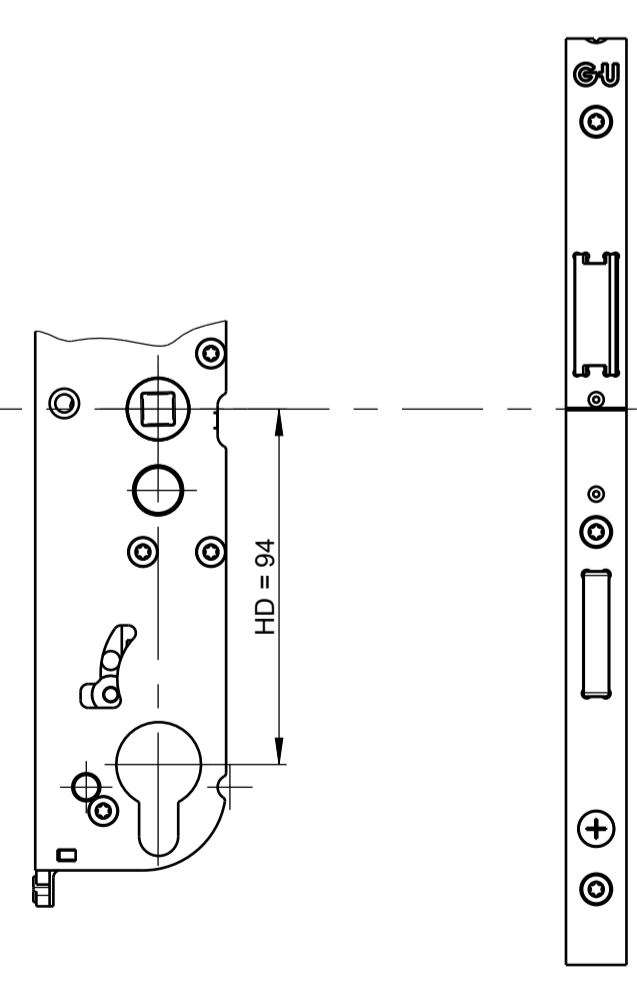
Frame milling for L0.2 striker
Item 8.1A, 8.1B



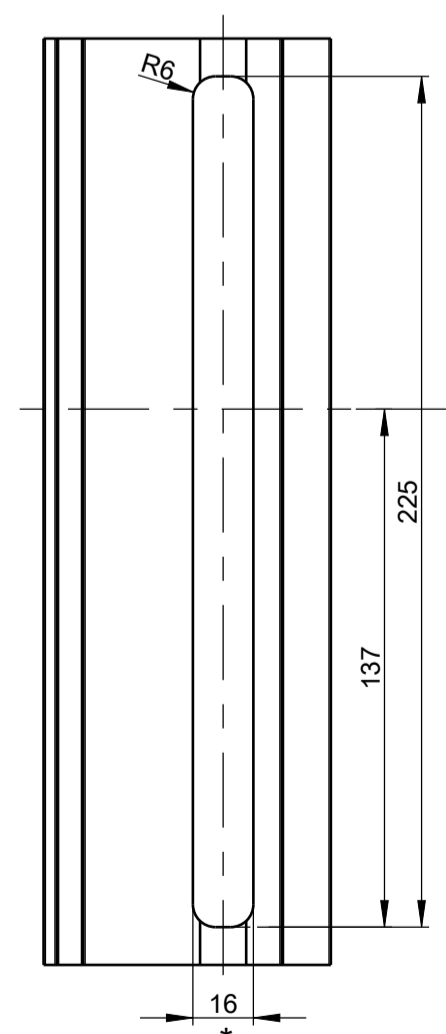
Lock case with PC-hole



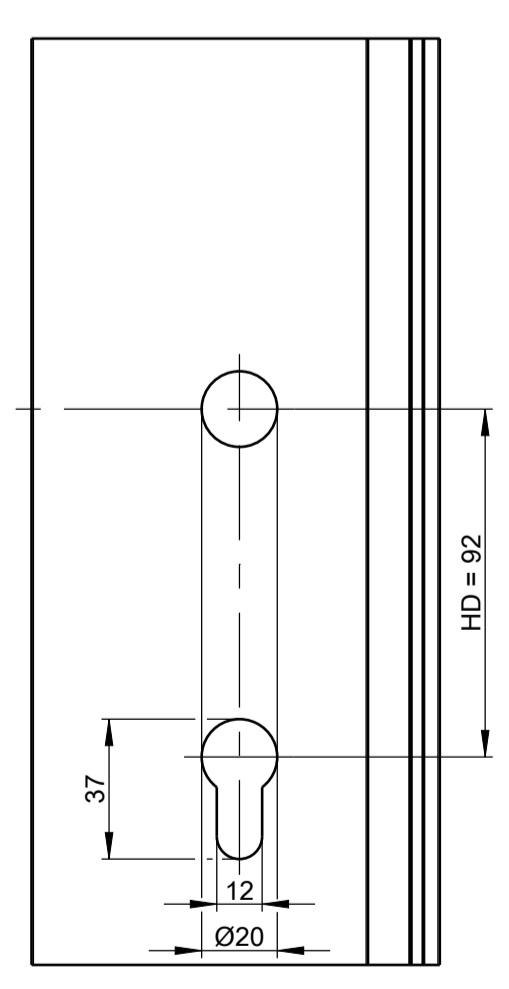
Lock case with RC hole



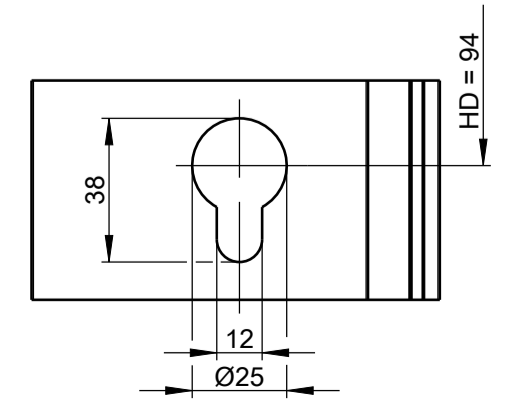
Leaf milling for
lock case



Leaf milling for PC-hole

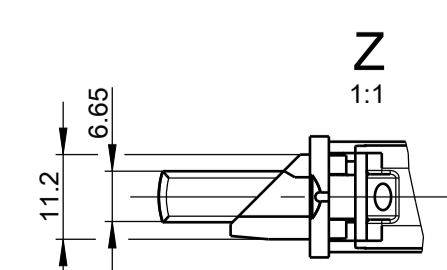
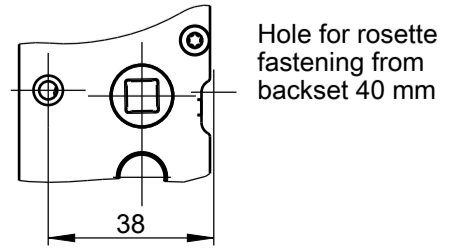


Leaf milling for RC hole

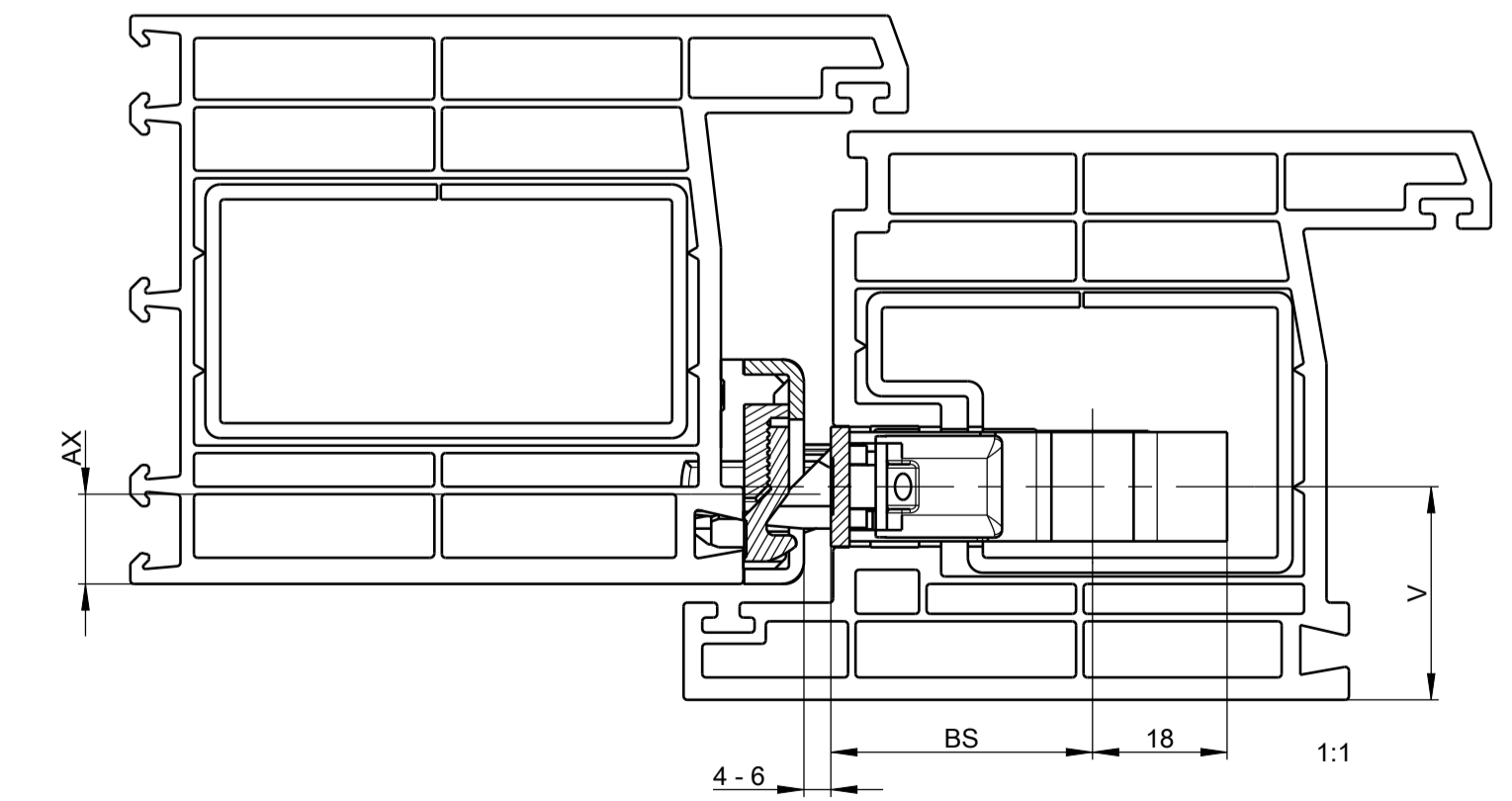


For faceplate 16
* aim at dimension 15.5

= 13 for SECURY V (manual locks); BS = 33 - 35
= 20 for SECURY V (manual locks); BS = from ab 40
= 20 for SECURY A (Automatic); BS = for all backsets



Lock case

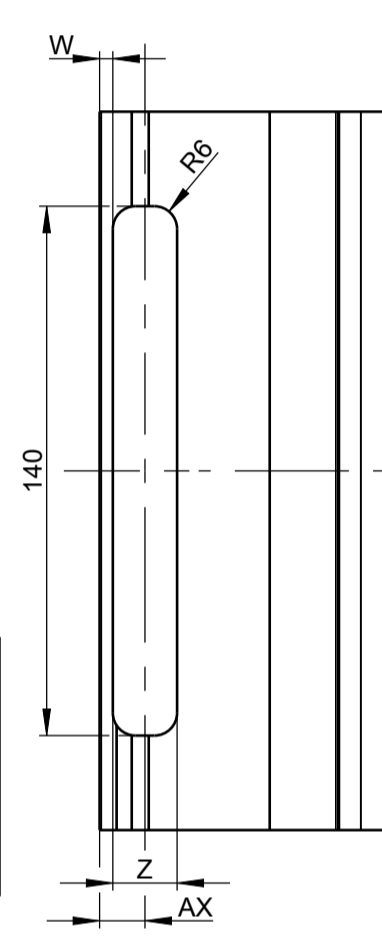


AX = axis (accessories)
V = lock position (depending on profile)
Further sectional views see sheet 8

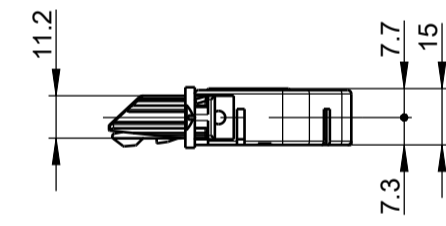
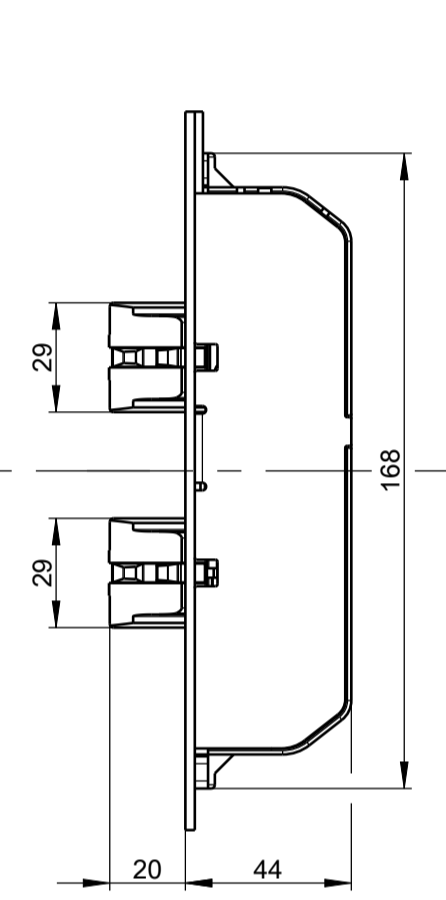
Sectional views of
multi-point locks

AX	U-profile height		U-profile height	
	5	6	8	8
	Dimension Z		Dimension W	
≥12	18	min. 17	3	3.5
11	17		3	
10	17		2	
9	15		2	

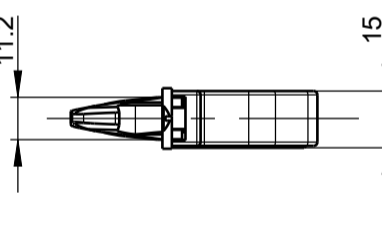
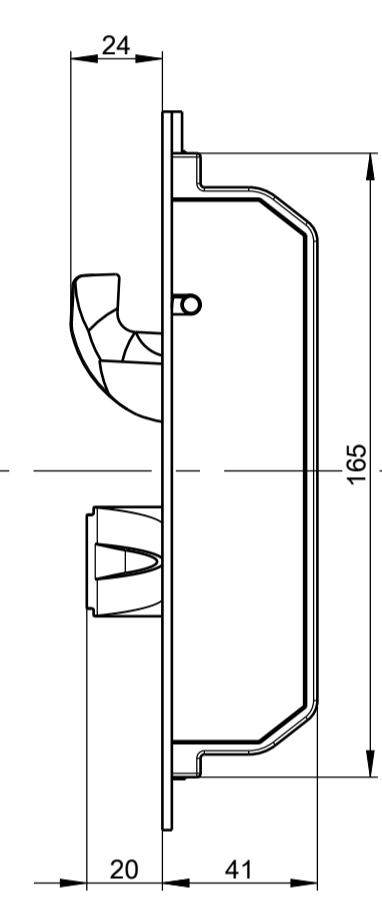
Frame milling for striker
Item 9.1F, 9.1C



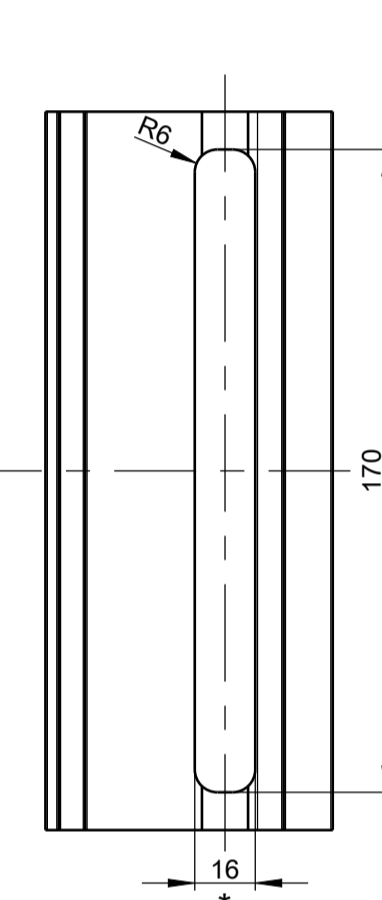
Double latchbolt



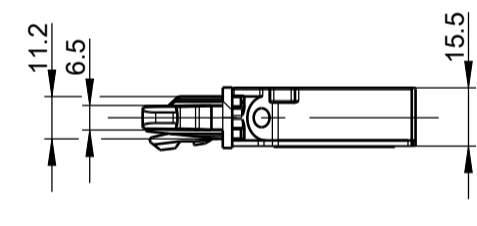
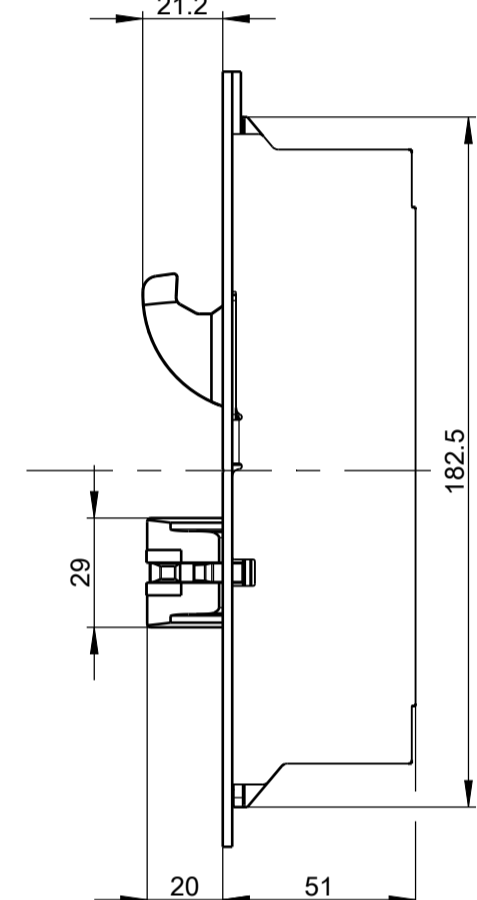
Double bolt (DR)



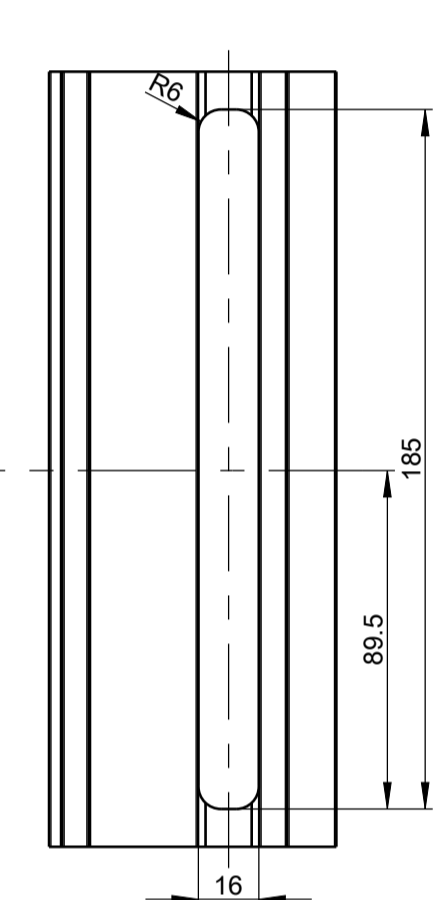
Leaf milling for double latchbolt, double bolt



Automatic double bolt

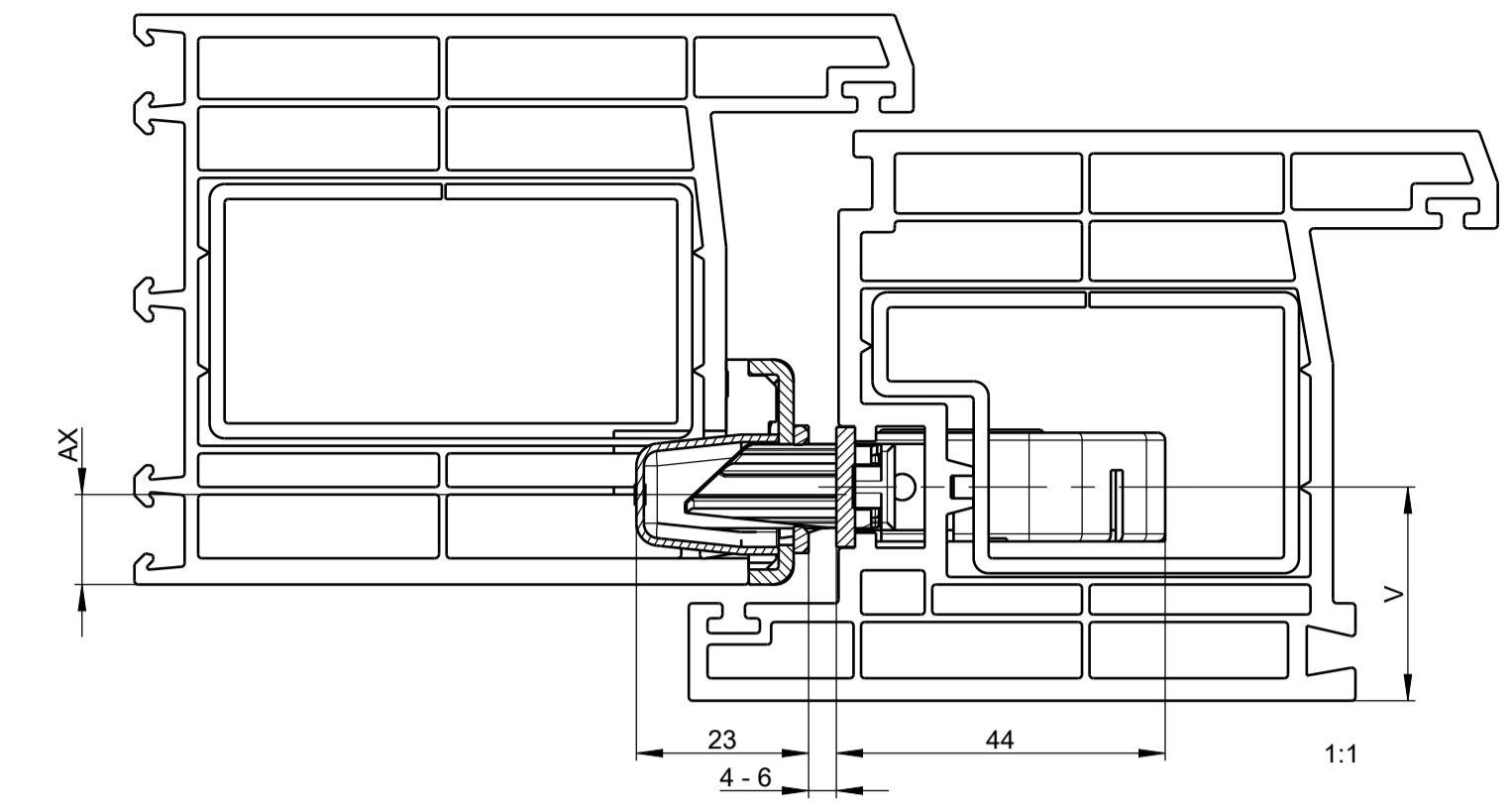


Leaf milling for Automatic double bolt

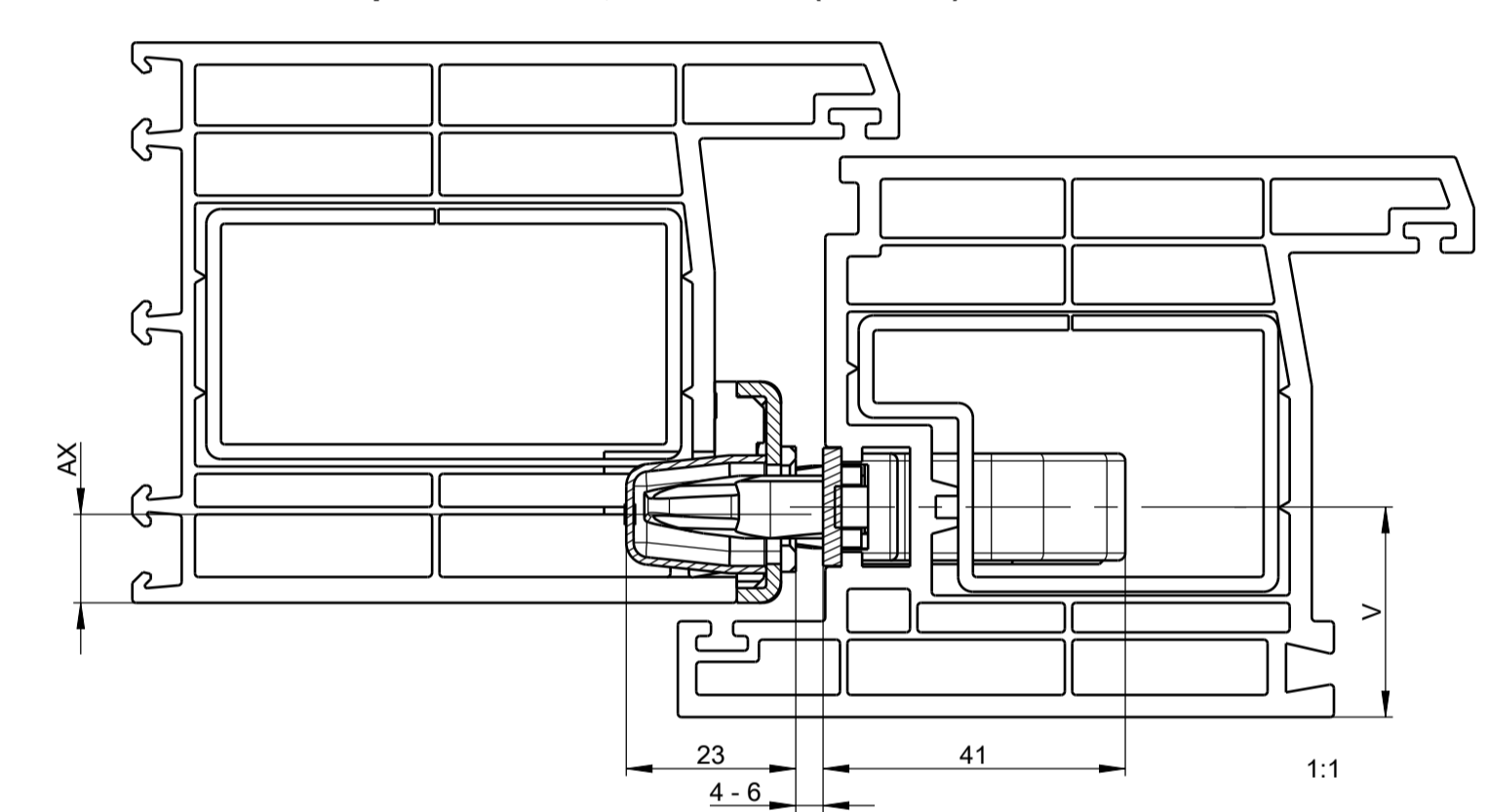


* For faceplate 16
* aim at dimension 15.5

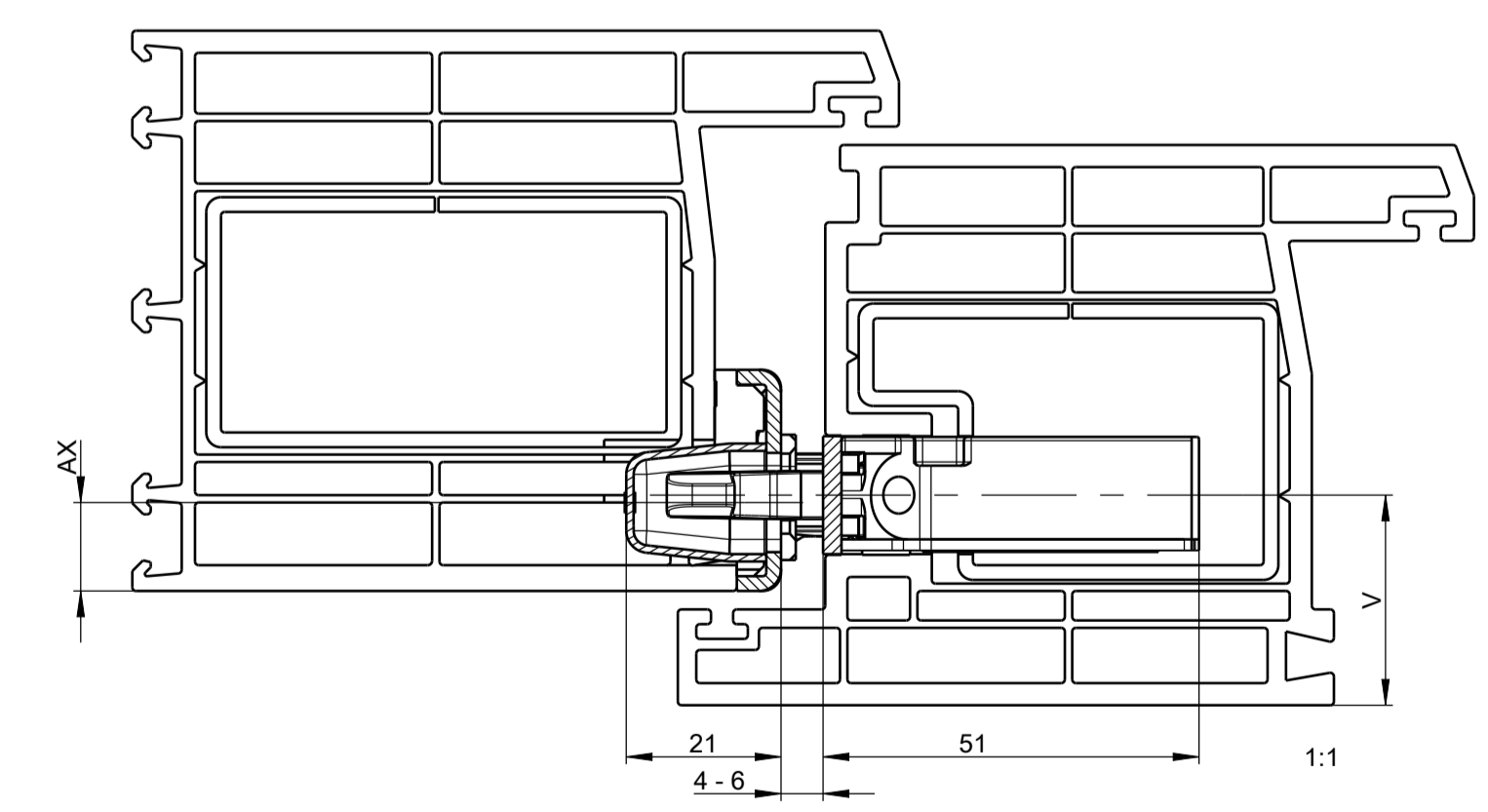
Double latchbolt
Strikers/One-piece strikers, surface-mounted (AX < 12)



Double bolt (DR)
Strikers/One-piece strikers, concealed (AX ≥ 12)



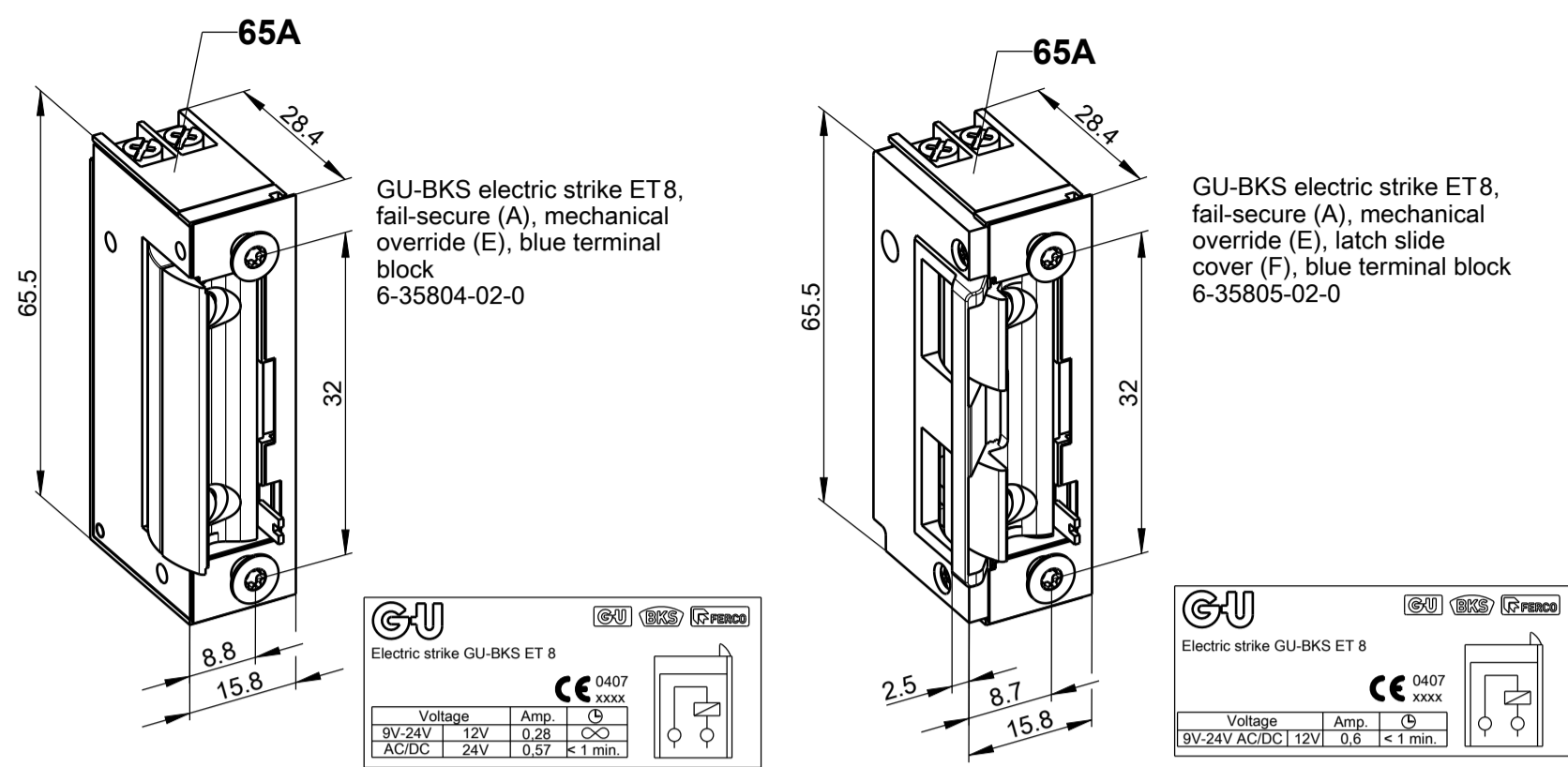
Automatic double bolt
Strikers/One-piece strikers, concealed (AX ≥ 12)



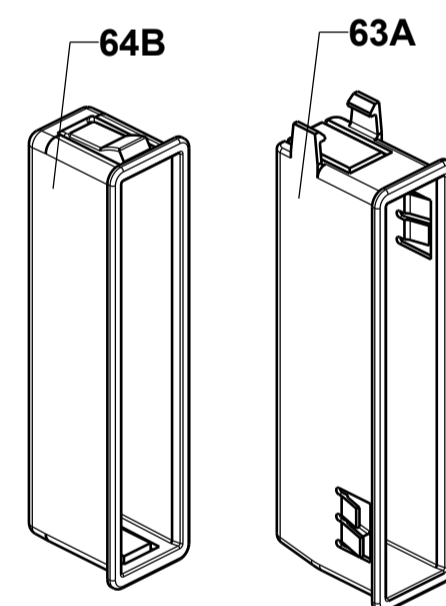
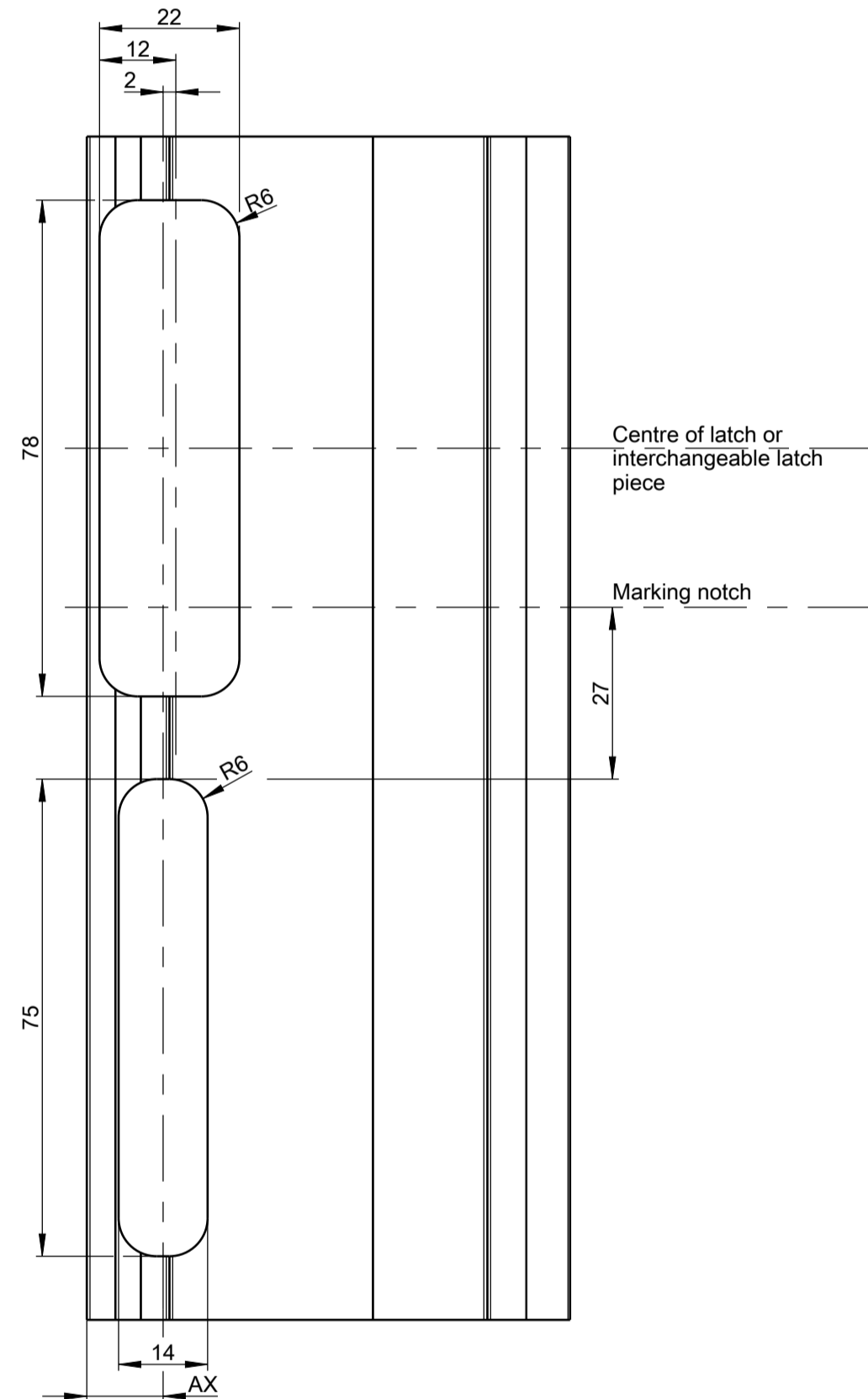
Sectional views of multi-point locks

Further sectional views see sheet 7

Electric strike

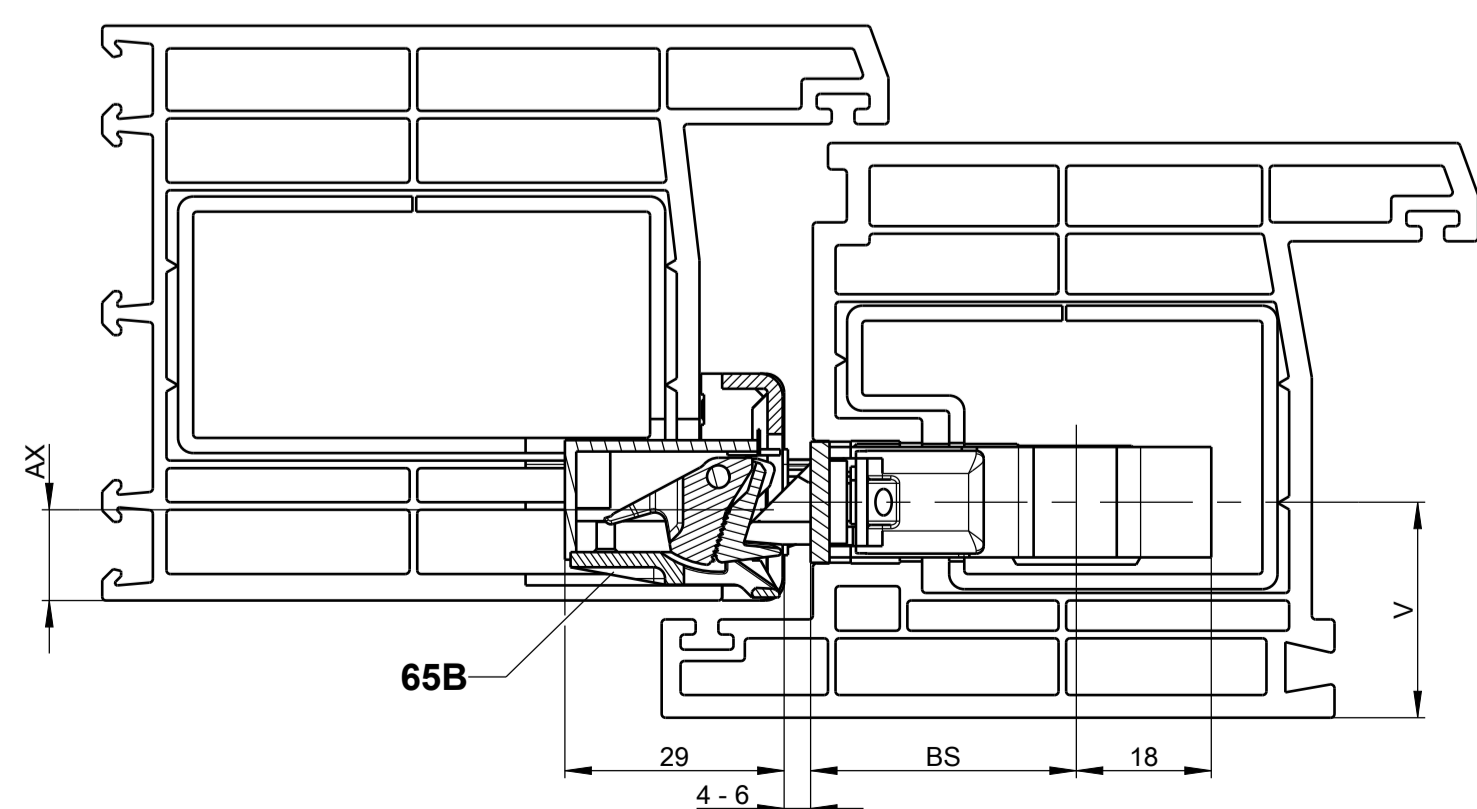


Frame milling for GU-BKS electric strike ET 8

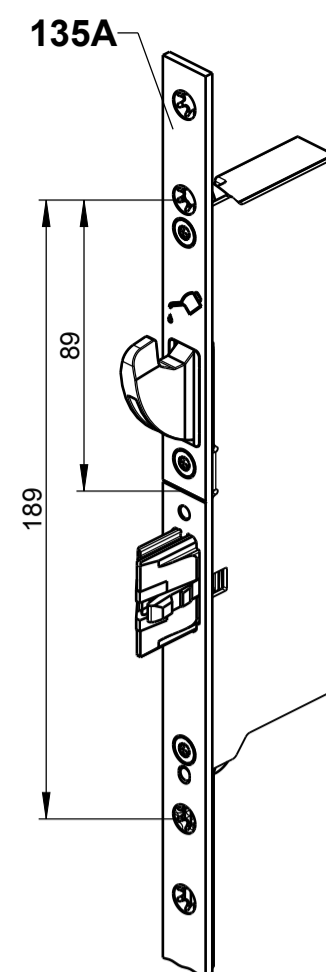


Deadbolt cover

Lock case

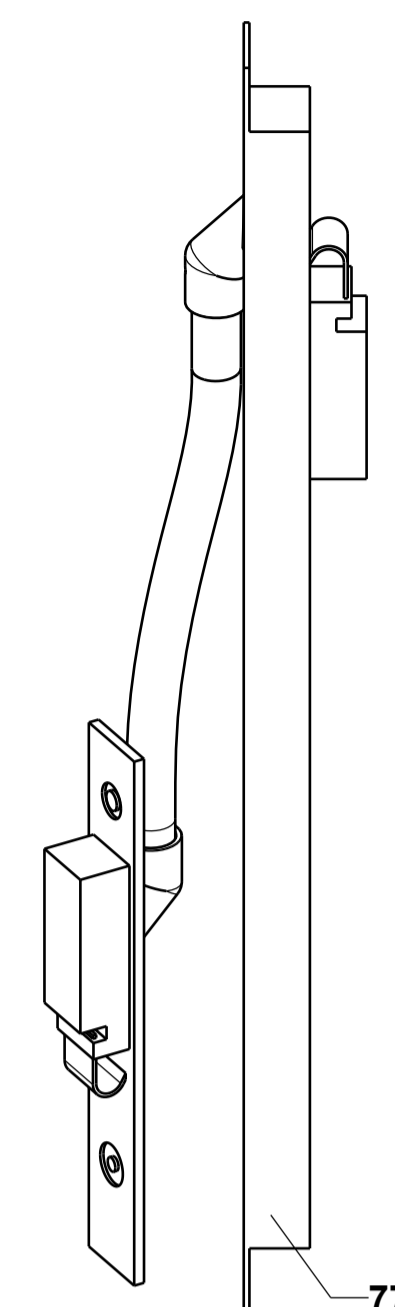


1:1



Mounting holes are required for RC4-compatible locks and must be provided by the customer. The associated frame-side accessories must be positioned such that the hook bolt overlaps as much as possible with the accessories on the frame side.

Cable link

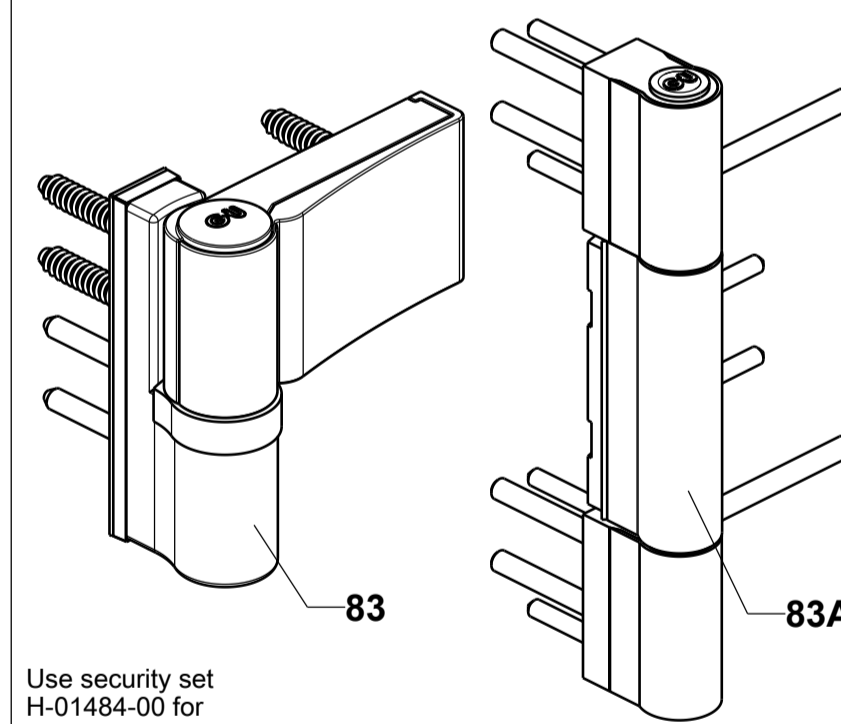


Detachable due to pluggable connector (provided detachable type of cable link is used)

Installation instructions: 0-45510-L0

See order catalogue.

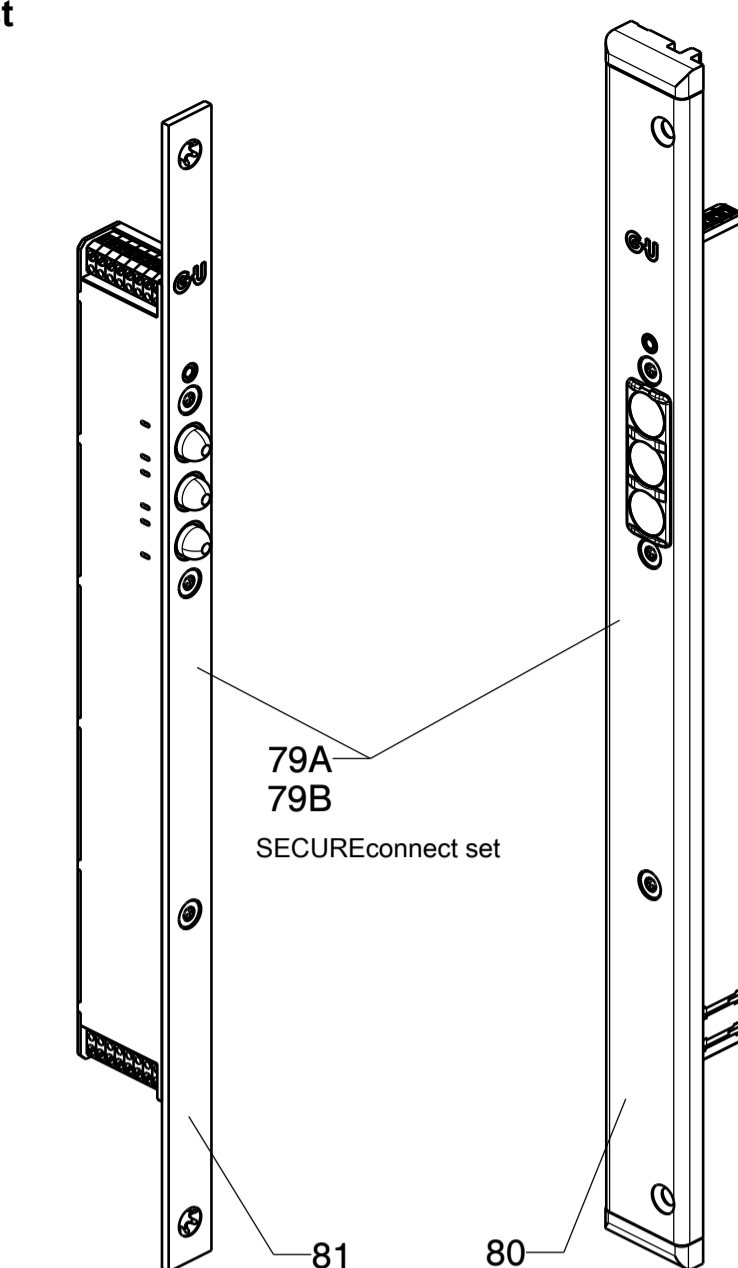
House entrance door hinge



Use security set H-01484-00 for outward-opening doors.

See order catalogue.

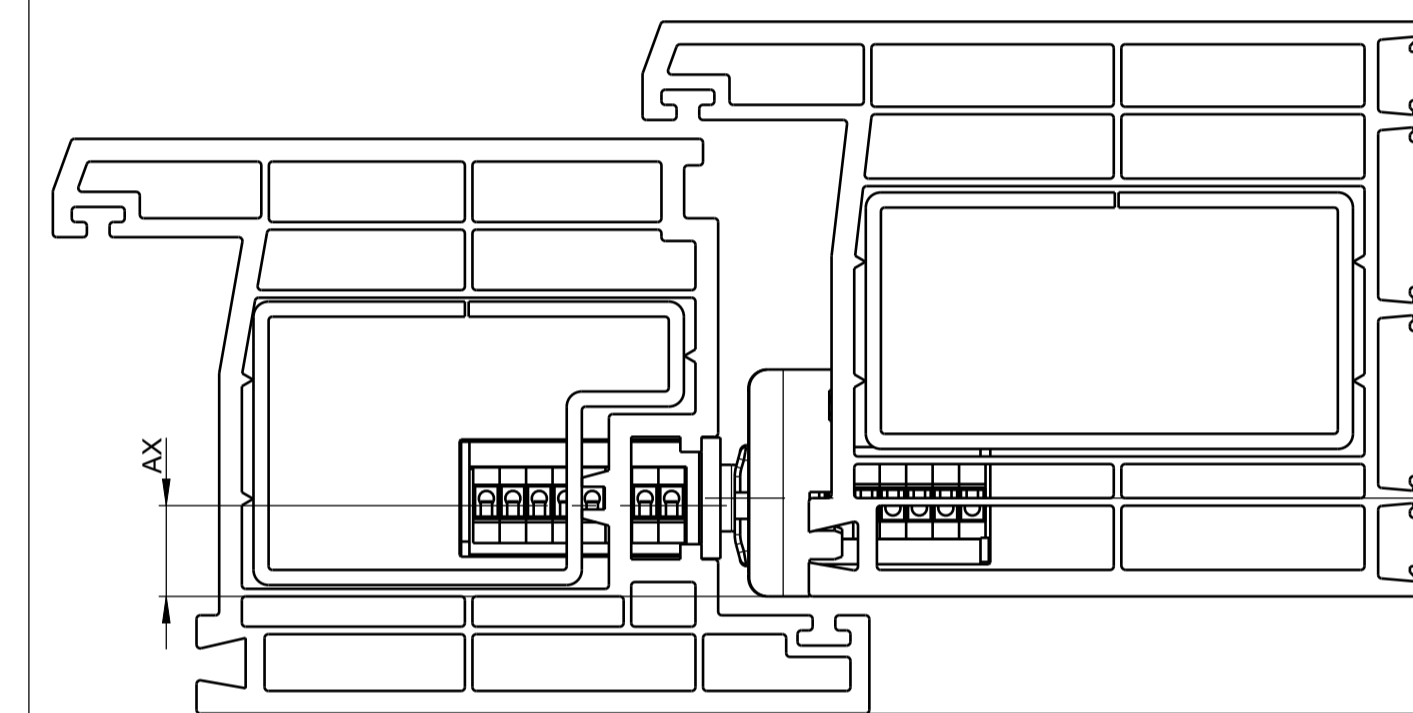
SECUREconnect



SECUREconnect faceplate

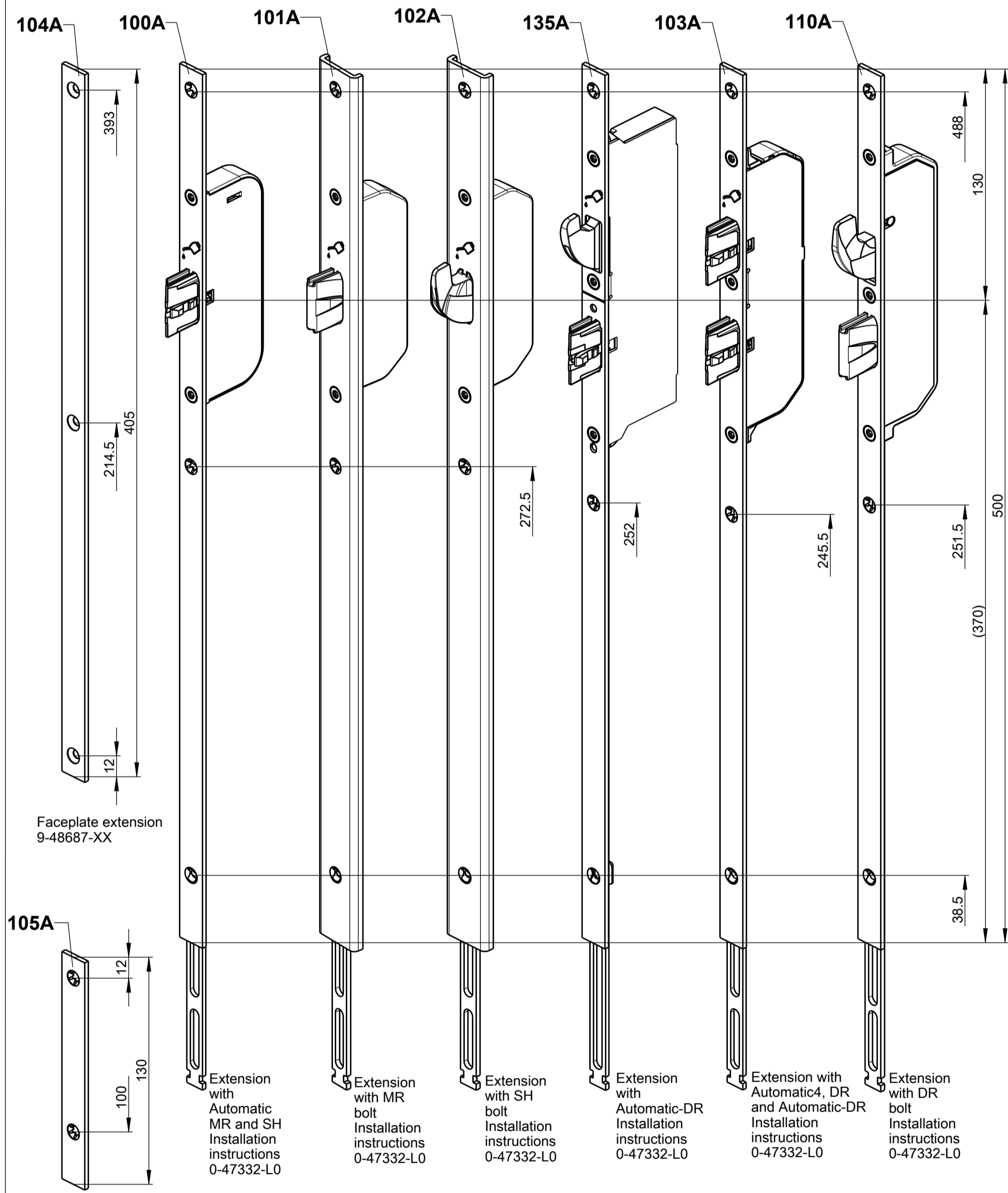
SECUREconnect U-faceplate with moulding

Installation instructions: 0-45733-L0
Operating instructions: 0-45654-L0
with integrated power supply unit



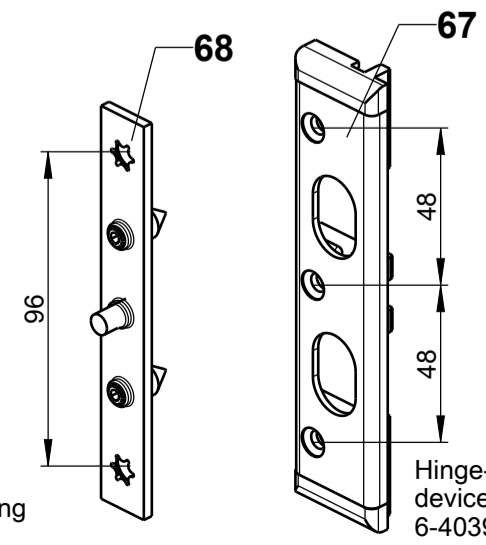
See order catalogue.

1:1



Hinge-side locking device

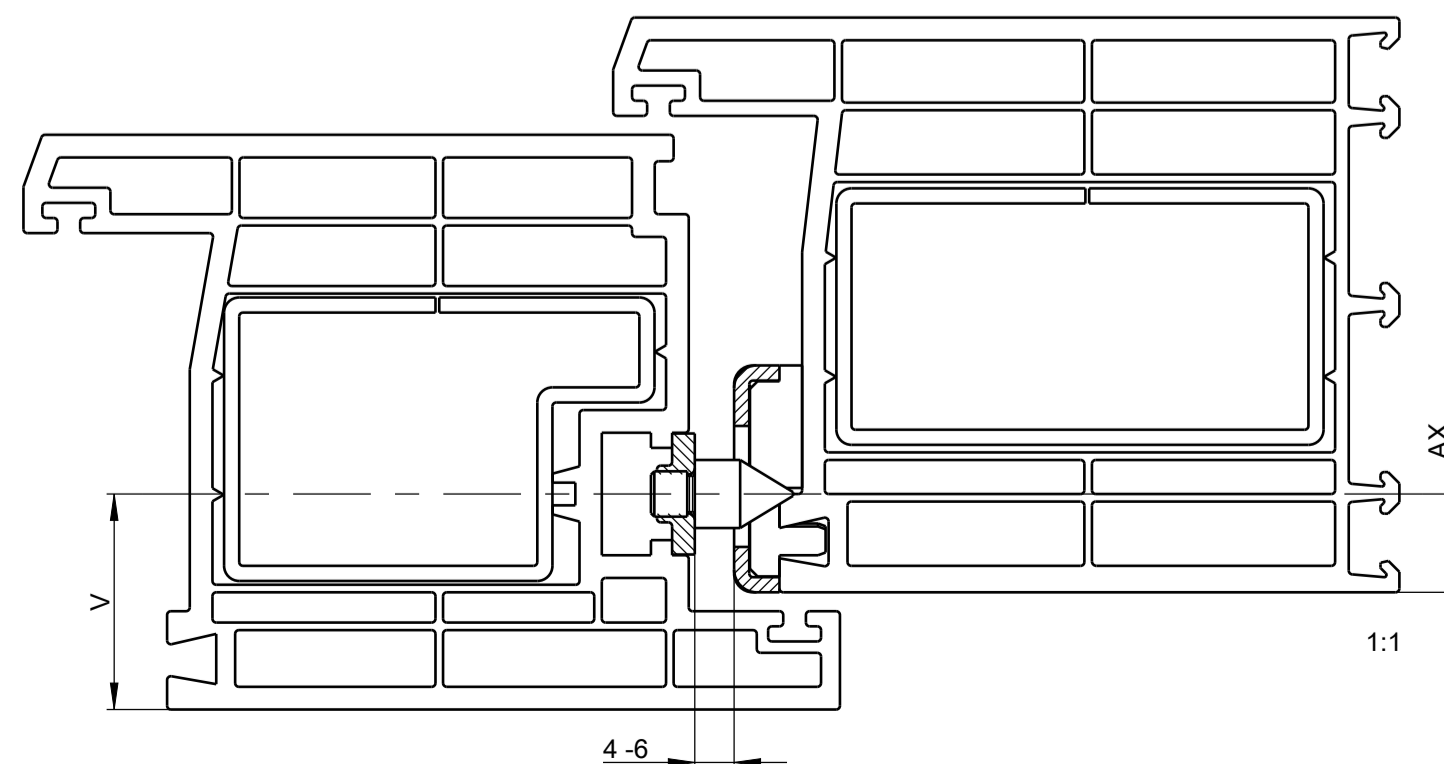
Adjustment information:
Install the wedged keeps as close as possible to the hinges. The toothed area of the drill-in cam must be set in parallel with that of the security plate (see sectional view on the right). Verify proper hardware functioning.



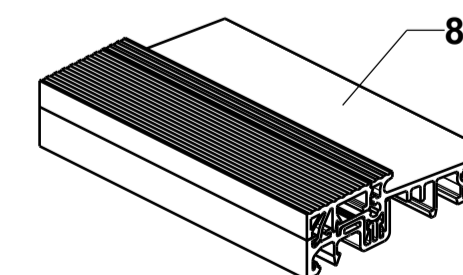
Hinge-side locking device, leaf part 6-37515-99

Hinge-side locking device, frame part 6-40394-99

Hinge-side locking device



System threshold



See order catalogue.

AX = axis
V = lock position (depending on profile)

Accessories