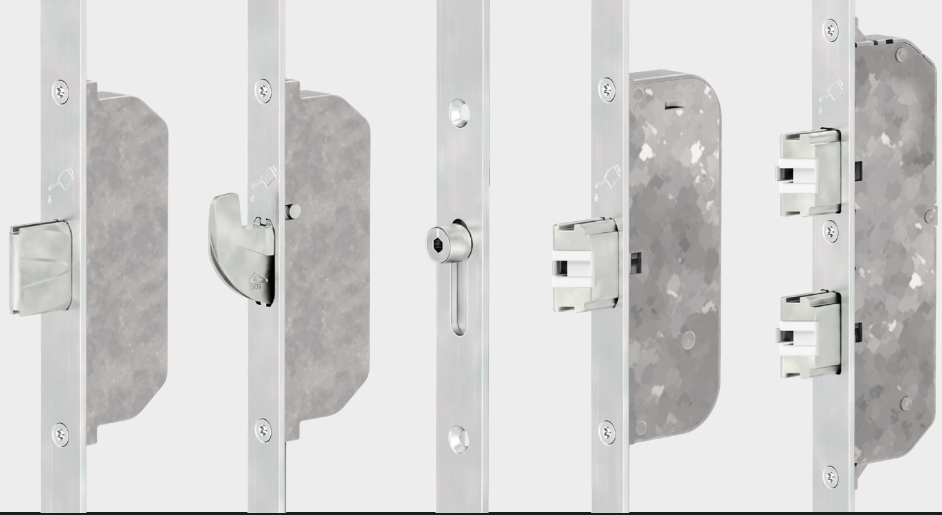




0-48779-LO-0-EN
02 | 12.2023 | G41222 | Designed in Germany



DOOR TECHNOLOGY



SECURITY

EN

GU-SECURITY multi-point locks

General installation, operating and maintenance instructions

Securing technology for you



SECURY

GU-SECURY multi-point locks



Table of contents

1. Safety instructions and definitions	Page	3
1.1 Warning symbols	Page	3
1.2 Product liability	Page	3
2. Preparation for use	Page	4
2.1 General information	Page	4
2.2 Notes regarding assembly and installation	Page	7
2.3 Notes regarding use and operation	Page	7
2.3.1 Function test	Page	8
3. Measures to be taken in the event of difficulty of movement ..	Page	9
4. Product description	Page	10
4.1 Standard locks	Page	10
4.1.1 SECURY Automatic (self-locking)	Page	10
4.1.2 SECURY Automatic with external TE module	Page	11
4.1.3 SECURY Automatic TE	Page	12
4.1.4 SECURY Automatic-DR TE	Page	13
4.1.5 SECURY Automatic TEOR	Page	14
4.1.6 SECURY MR/SH/DR/RZ (manual-locking)	Page	15
4.1.7 SECURY-EUROPA (lever-operated)	Page	16
4.2 Panic locks	Page	17
4.2.1 SECURY Automatic Panik / SECURY Automatic-DR Panik	Page	17
4.2.2 SECURY 19 / SECURY 19 ADR	Page	18
4.2.3 SECURY 21	Page	19
4.3 Safe-T-catch	Page	20
4.4 Changing the DIN direction of the latch	Page	21
4.4.1 Changeover of main latch (10 mm projecting latch)	Page	21
4.4.2 Changeover of automatic latch	Page	21
4.4.3 Changeover of central latchbolt (SECURY 19)	Page	21
4.5 Adjustment of latch keeper	Page	22
4.5.1 Adjustment of latch keeper on the interchangeable latch piece	Page	22
4.5.2 Adjusting the latch keeper on the electric strike	Page	22
4.6 Rosettes and lever sets	Page	23
5. Warranty	Page	24
6. Disposal	Page	24

1. Safety instructions and definitions

1.1 Warning symbols



DANGER denotes a dangerous situation which, if not avoided, could lead to death or serious injury.



WARNING denotes a dangerous situation which, if ignored, could lead to death or serious injury.



CAUTION denotes a dangerous situation which, if not avoided, could lead to injuries.



ATTENTION denotes a situation which could lead to material damage.



NOTE denotes a statement which is informative in nature.

1.2 Product liability

Multi-point door locks GU-SECURY

The following information about multi-point locks for main and secondary doors must be observed in accordance with the German Product Liability Act (§ 4 ProdHaftG), which defines the liability of a manufacturer for his products. Non-observation shall release the manufacturer from his liability.

Product information and intended use

Multi-point locks as defined here lock a door by means of a latch so that they cannot be opened by pushing or pulling. They lock (secure) a closed door by means of an unsprung deadbolt which is pushed out of the multi-point lock and additionally by two or more locking cams, MR bolts or SH bolts.

With automatic multi-point locking systems, this is also done by two or more spring-loaded automatic latchbolts, DR bolts or double latchbolts.

All locking cams, MR bolts, automatic latchbolts, automatic DR bolts, automatic double latchbolts or SH bolts engage in corresponding recesses in the door frame or in latch&deadbolt strikers, dustbox strikers or strikers.

Multi-point locks are used with vertically-installed doors made of timber, PVC, aluminium or steel and corresponding combinations of these materials.

Doors for damp rooms and for use in environments with aggressive corrosive air contents require special hardware.

Builders and operators of doors are legally obliged to take all necessary precautions in order to protect persons and material goods within the building. For this reason, special attention must be paid to commissioning, the function test and the obligatory regular maintenance and repair.

The operator must ensure that the system remains functional between these annual maintenance intervals.

SECURY

GU-SECURY multi-point locks



Product liability

Compliance with the manufacturer's specifications, in particular the instructions in the supplied Assembly and Operating Instructions, belong to intended use. This is the only way to avoid damage. Changes made to the multi-point lock without the approval of GU exclude the manufacturer's liability for resulting damages.

The entire hardware set in each case may only consist of GU hardware components. In the case of inappropriately assembled hardware, and/or in case of non original accessory components and/or non factory-approved accessory components, no liability is accepted.

To make the screw connections correctly, please observe the relevant notes in the GU installation drawings and mounting instructions.

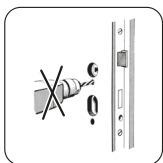
2. Preparation for use

2.1 General information

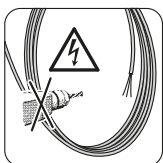
Observe all relevant installation drawings and assembly instructions!



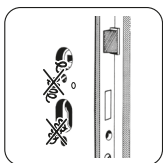
Do not drill through the door leaf in the area of the lock when the lock is installed!



Do not drill in the vicinity of power cables!



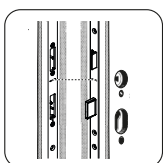
The profiles must be thoroughly cleaned after drilling and milling work to remove any swarf.

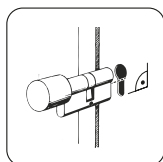


Do not apply excessive force when knocking the spindle through the follower, it must precisely line up with its axis and must be free of tension.

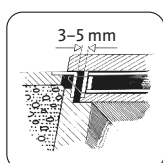


The marking notch of the faceplate must be lined up with the marking notch of the one-piece striker/latch&deadbolt striker! If there is no marking notch, the latch on the faceplate is lined up with the latch recess on the one-piece striker/latch&deadbolt striker!





The profile cylinder must line up, as otherwise movement may be difficult!



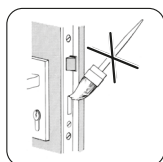
The distance between the faceplate and striker should be 4 ± 1 mm!



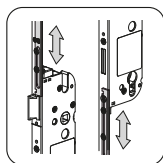
Once the installation work on the door is complete, it must be ensured by inserting clearance packers that the sash and frame cannot move relative to one another in transit (as this could damage the locking points)!



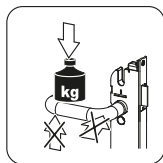
Do not lift or carry the door leaf by the handle!



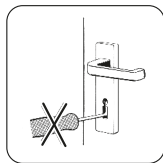
Do not paint over deadbolt(s) or latch(es)!



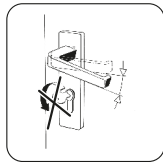
The connecting rods must always be able to move freely behind the faceplate (by ensuring that fixing screws are not screwed in at an angle, not using excessively large screws, avoiding jamming points,...)!



Only apply force to the lever handle in the intended rotational direction. Only apply a maximum force of 150 N to the lever handle in the actuation direction!



The lock may only be operated with the appropriate key and not with foreign objects!



Do not operate lever handle and key at the same time!

SECURY

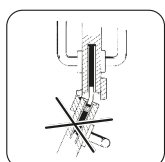
GU-SECURY multi-point locks



Emergency exit devices must not be left with the key inserted!



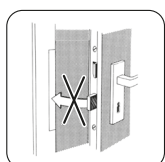
Panic exit devices must not be fitted with locking cylinders with knob or thumbturn!
Exception: BKS locking cylinder with knob or knurled knob in defined cylinder cam position (panic version)



2-leaf doors without double-sided panic function (full panic function) must not be forced open via the passive leaf!



If there are signs that the lock has been tampered with (or forced) it must be replaced immediately!



The deadbolt must not project when the door is open!



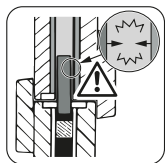
Only open and close the door with your hands and only via the designated handle!



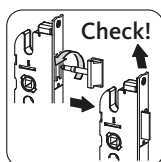
Be sure that all objects and limbs are clear of the area between the sash and frame when opening and closing the door.



Locks must be lubricated at least once a year with non-resinous oil/grease (especially the latches or latchbolts)!



The deadbolt must not rub in the striker (widen hole in the striker if necessary)!



In the case of multi-point locking systems with reversible latch, check that the latches are securely seated!

Please observe the notes on the non product-specific installation drawings. You can find these at <https://www.g-u.com>

When installing the SECURY Automatic with optional A-opener, please observe the instructions 0-45777-LO-0. You can find these at <https://www.g-u.com>

ATTENTION

Only carry out the installation as specified in the GU installation drawing.

Inappropriate and excessive tightening or inaccurate positioning of the lock may result in insufficient lock functioning!



Grease the locks

Operational check and lubrication of all moving parts and locking points at least once a year. The rear of the latch in the auxiliary deadbolt of self-locking locks in particular must be lubricated with grease at least once a year.



Grease the locking points, sliding and bearing points with GU service grease H-01960.

Oil the marked spots with the GU-BKS high-performance spray B 9780 0001.

2.2 Notes regarding assembly and installation

- The reverse sides of the latchbolt must be greased with a non-resinous grease when the latchbolt is fully extended after the lock has been installed in the door (prior to commissioning) (only with SECURY Automatic) (GU service grease H-01960).
- If the interchangeable latch piece requires adjustment, the strikers or top keepers must be justified accordingly.
- With the door open, the lock must be checked for proper functioning:
 - Withdraw the latchbolts again using the lever handle or the key after testing!
- The latchbolts must be received in the strike freely without friction.

WARNING

Observe the following when installing a lock with safe-T-catch:

install the lock with lever set, apart from the turn handle of the door guard, in the leaf.

Use the drilling jig 6-29217 to drill the holes for attaching the safe-T-catch thumbturn!

Following assembly, the safe-T-catch thumbturn must turn back of its own accord when unlocking after it has been turned through a maximum of 45°.

2.3 Notes regarding use and operation

Maintenance and cleaning

Locking systems should be checked at least once a year to ensure fitness for use. In the process, the proper condition of the exit device must be ensured.

With panic locks and

multi-point locking systems approved for fire and smoke protection:

To ensure the products remain functional, maintenance must be carried out by the operator or expert 1–2 times a year (depending on the frequency of use).

With non-panic locks:

We recommend carrying out maintenance on an annual basis to ensure the products remain functional.

SECURITY

GU-SECURITY multi-point locks



Perform the following routine maintenance checks and document them accordingly:

- Inspect and actuate the multi-point lock and make sure that all components of the central locking system are in a perfect operating condition.
- Make sure that the keepers are not jammed or filled with dirt.
- Make sure that no additional locking devices have been fitted to the door at a later point in time.
- Verify that all system components still correspond to the list of approved components originally supplied with the system.
- Have the system serviced to its proper condition at regular intervals.
- Make sure the fixing materials are properly tightened and retighten according to regulation if required.
- Lubricate all moving parts, locking points, and the rear of the central and additional latchbolts with a non-resiniferous grease (GU service grease H-01960).

Only cleaning and care agents that do not affect the corrosion protection of the hardware parts may fundamentally be used.

2.3.1 Function test

Function test when the door is open

Check that all fastening screws are secure:

- Make sure, by testing with a screwdriver, that all fixing screws are firmly screwed down. The screws must not be screwed down too forcefully or overtightened!

Check function of lever handle:

- Push the handle down as far as it will go. The lever handle must automatically return to the starting position!

Check the function of the latch:

- Push the handle down as far as it will go. The latch must retract when the lever handle is pressed. The latch must project by no more than 2 mm beyond the faceplate when the lever handle is pressed down!
- Turn the key in the locking cylinder in the opening direction. The latch must retract when the key is turned!

Check the function of the deadbolt:

- Turn the key in the locking cylinder in the locking direction. The main latchbolt must extend completely and smoothly!
- Remove the key when the main deadbolt is extended. It must be possible to take out the key when the main deadbolt is extended (up to two turns of the keys depending on the lock type)!

Function check with the door closed

Repeat the steps specified in the function test from "Check function of lever handle" when the door is open.

NOTE

With multi-point locking systems with fire protection and smoke protection approval and A-opener with specified UPS (or similar components), the function of these parts must be regularly checked, at least twice a year!

3. Measures to be taken in the event of difficulty of movement

- Check the tightening torque of the fixing screws on the lever set and/or the profile cylinder.
- Make sure that the fixing screws are not screwed in at an angle, as otherwise the screw head could obstruct elements moving behind it.
- Check the diameter of the fixing screws.
- Make sure that the drill holes for the fixing screws line up with the milled recesses for the lock cases.
- Check the gap dimension of the door gasket and replace it with a softer gasket if necessary.

SECURY

GU-SECURY multi-point locks



4. Product description

4.1 Standard locks

4.1.1 SECURY Automatic (self-locking)

With this multi-point locking system, the latchbolts throw automatically by 20 mm when the door is pulled shut and are secured against being pushed back. The door is therefore locked. These locking systems can be opened at any time via the lever handle from the inside and by key from the outside. The deadbolt at the main lock case can only extend and retract with one turn of the key. When the deadbolt is thrown, the lever handle can no longer be operated.

Automatic latchbolt (Automatic/Automatic3):

Single additional latchbolt, that automatically throws when the door is pulled shut.

Automatic double latchbolt (Automatic4/Automatic6):

Double additional latchbolt with deadbolting latch that throws automatically when the door falls shut.

Automatic DR bolt (ADR):

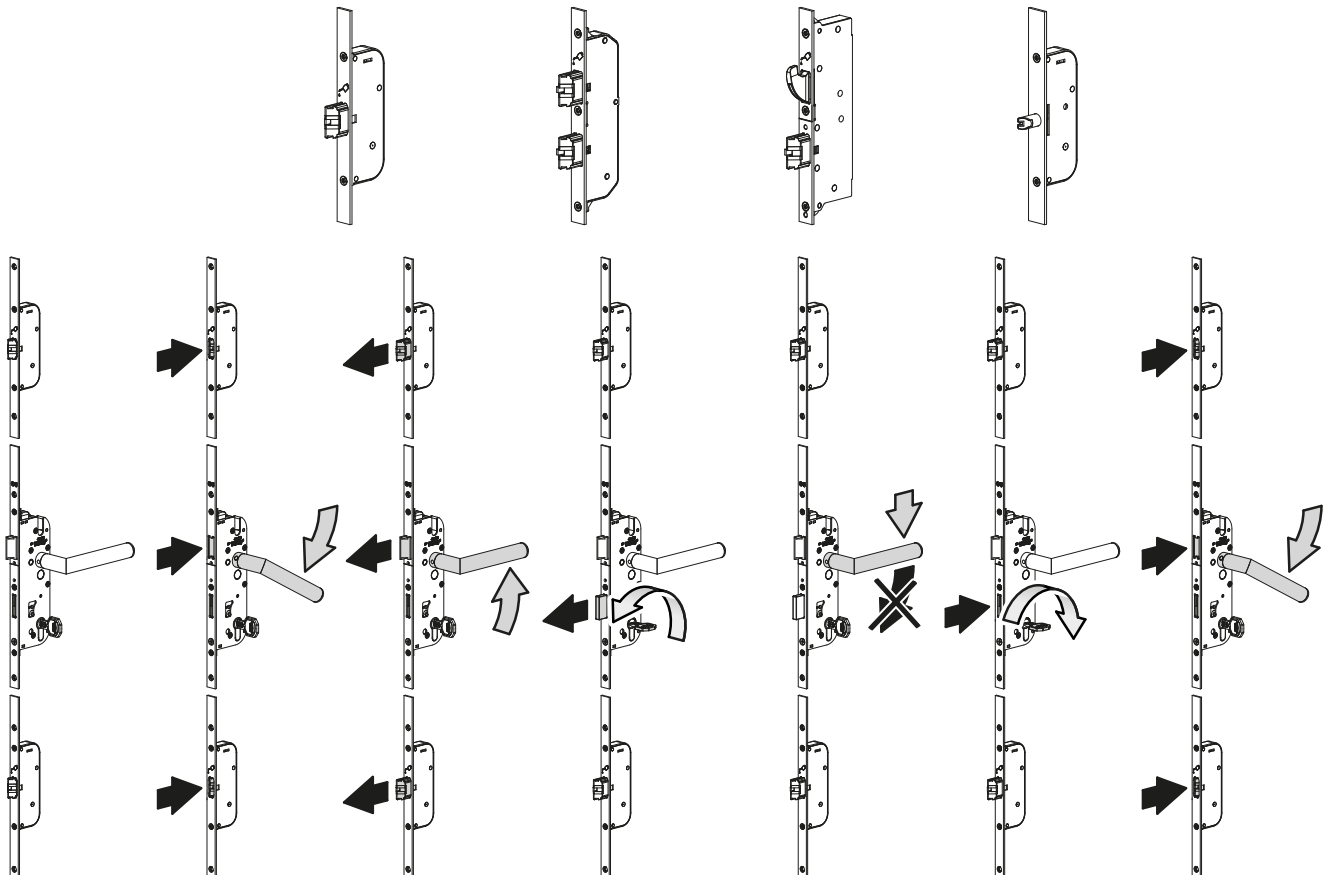
This multi-point locking system combines all benefits of the SH bolt and latchbolt systems.

Automatic pin bolt (AB):

Single additional latchbolt in bolt form that automatically throws when the door is pulled shut.

NOTE

When using a GU-SECURY multi-point locking system, we recommend only using a lever handle on the internal door side!

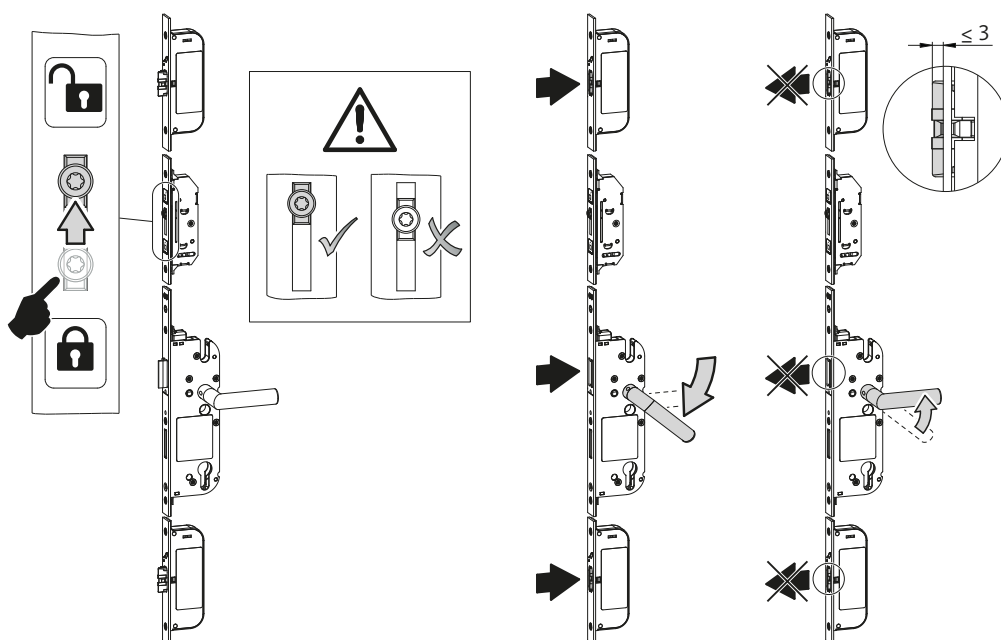


4.1.2 SECURY Automatic with external TE module

The daytime release function module can be retrofitted to all SECURY Automatic locks listed in Chapter 4.1.1 (apart from automatic bolts). With the daytime release function, the automatic locking function can be disabled manually in order to ensure the door is permanently released during the day.

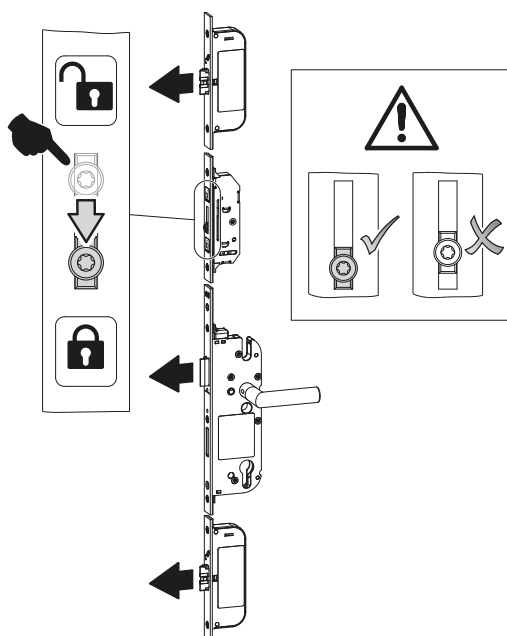
Activation

To activate the daytime release function, push the control pin up as far as it will go. Press the lever handle. When retracted, the additional latchbolts are secured and remain retracted when the lever handle is released.



Deactivation

To deactivate the daytime release function, push the control pin down as far as it will go.



SECURY

GU-SECURY multi-point locks

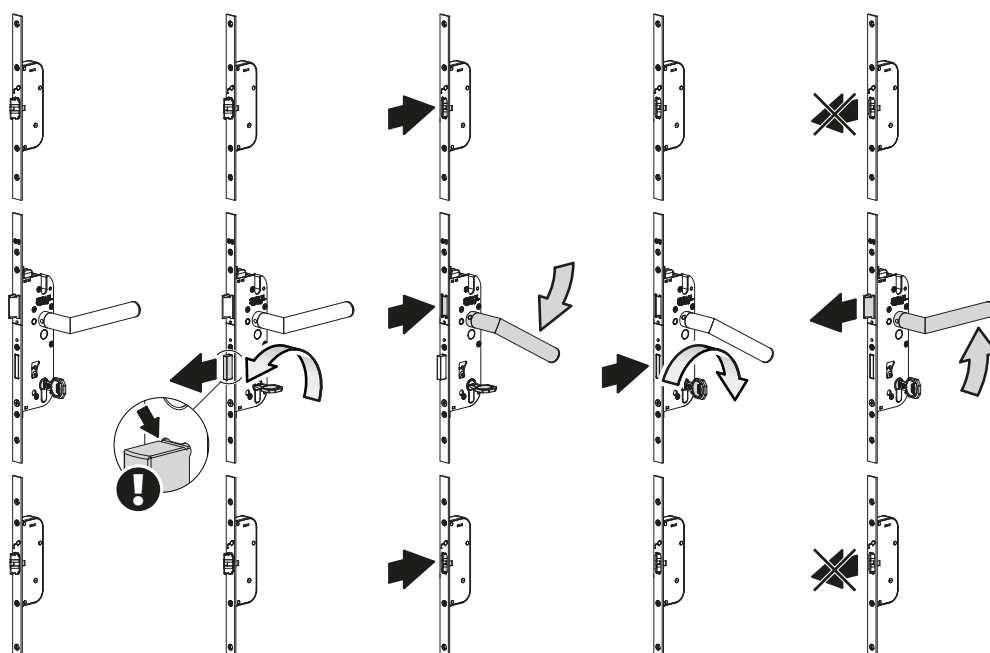


4.1.3 SECURY Automatic TE

With the daytime release function of the SECURY Automatic TE, the automatic locking function can be disabled manually in order to ensure the door is permanently released during the day.

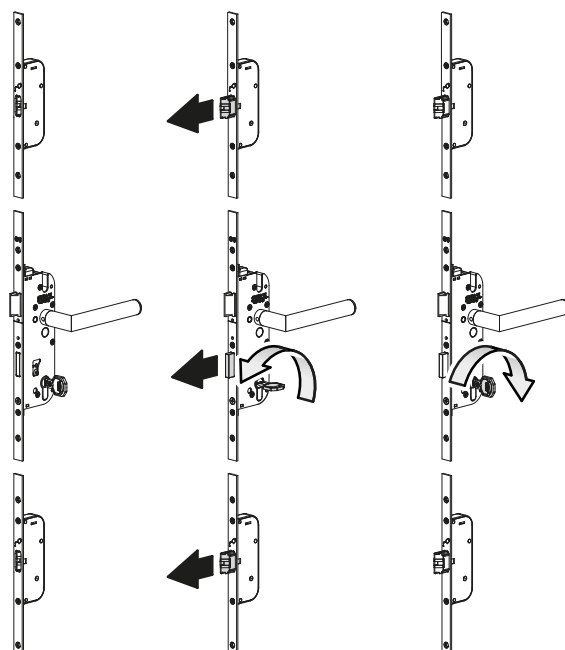
Activation

To activate this function, the deadbolt is extended via the profile cylinder up to the mark. The lever handle is operated and can be released again once the profile cylinder lock has been turned back. When retracted, the additional latchbolts are secured and remain retracted when the lever handle is released.



Deactivation

To deactivate this function, the profile cylinder is locked then unlocked.



4.1.4 SECURY Automatic-DR TE

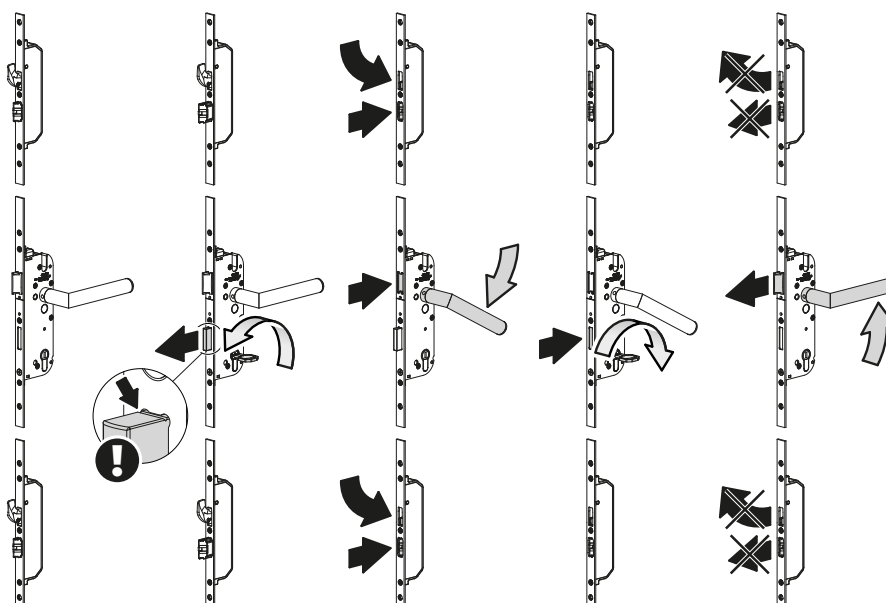
Once the door with SECURY Automatic DR multi-point locking system is pulled shut, the automatic latchbolts and SH bolts extend. They automatically function as deadbolts which are secured against being pushed back.

The daytime release function is also available as an option.

With the daytime release function, the automatic locking function can be disabled manually in order to ensure the door is permanently released during the day.

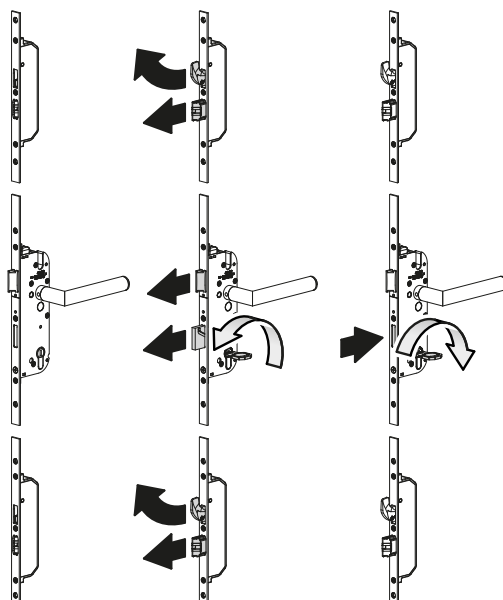
To activate this function, the deadbolt is extended via the profile cylinder up to the mark. The lever handle is operated and can be released again once the profile cylinder lock has been turned back.

When retracted, the additional latchbolts are secured and remain retracted when the lever handle is released.



Deactivation

To deactivate this function, the profile cylinder is locked then unlocked.



SECURY

GU-SECURY multi-point locks

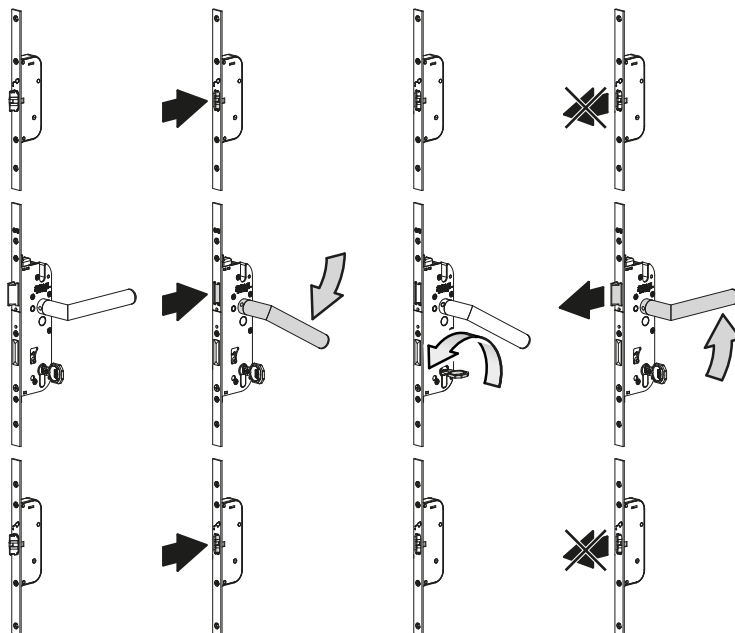


4.1.5 SECURY Automatic TEOR

With the SECURY Automatic TEOR multi-point locking system, the door is automatically locked after it is pulled shut and can be opened from the inside at any time. With the daytime release function, the automatic locking function can be disabled manually in order to ensure the door is permanently released during the day.

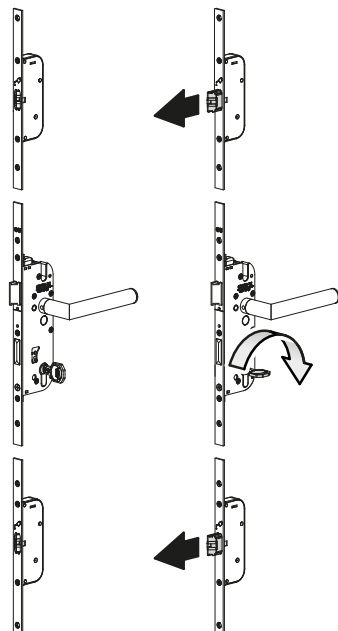
Activation

To activate this function, the lever handle is operated and the profile cylinder locked 1x 360°. When retracted, the additional latchbolts are secured and also remain retracted when the lever handle is released.



Deactivation

To deactivate the function, the profile cylinder is unlocked 1x 360°.



4.1.6 SECURY MR/SH/DR/RZ (manual-locking)

The SECURY multi-point locking is locked by locking the profile cylinder 2x 360°. In this case, the additional locking systems (MR bolt, DR bolt or SH bolt) and the main deadbolt extend and the optional additional roller pins move to the locked position. The additional locking elements are unlocked by unlocking the profile cylinder 2x 360°.

MR bolt (MR):

Saw through-proof multi-point locking system, with two to four MR bolts depending on the requirements.

SH bolt (SH):

Multi-point locking system which is saw-through proof and hooks in behind the shoot bolt striker – it comes with two to four SH bolts that move upwards when locked.

DR bolt (DR):

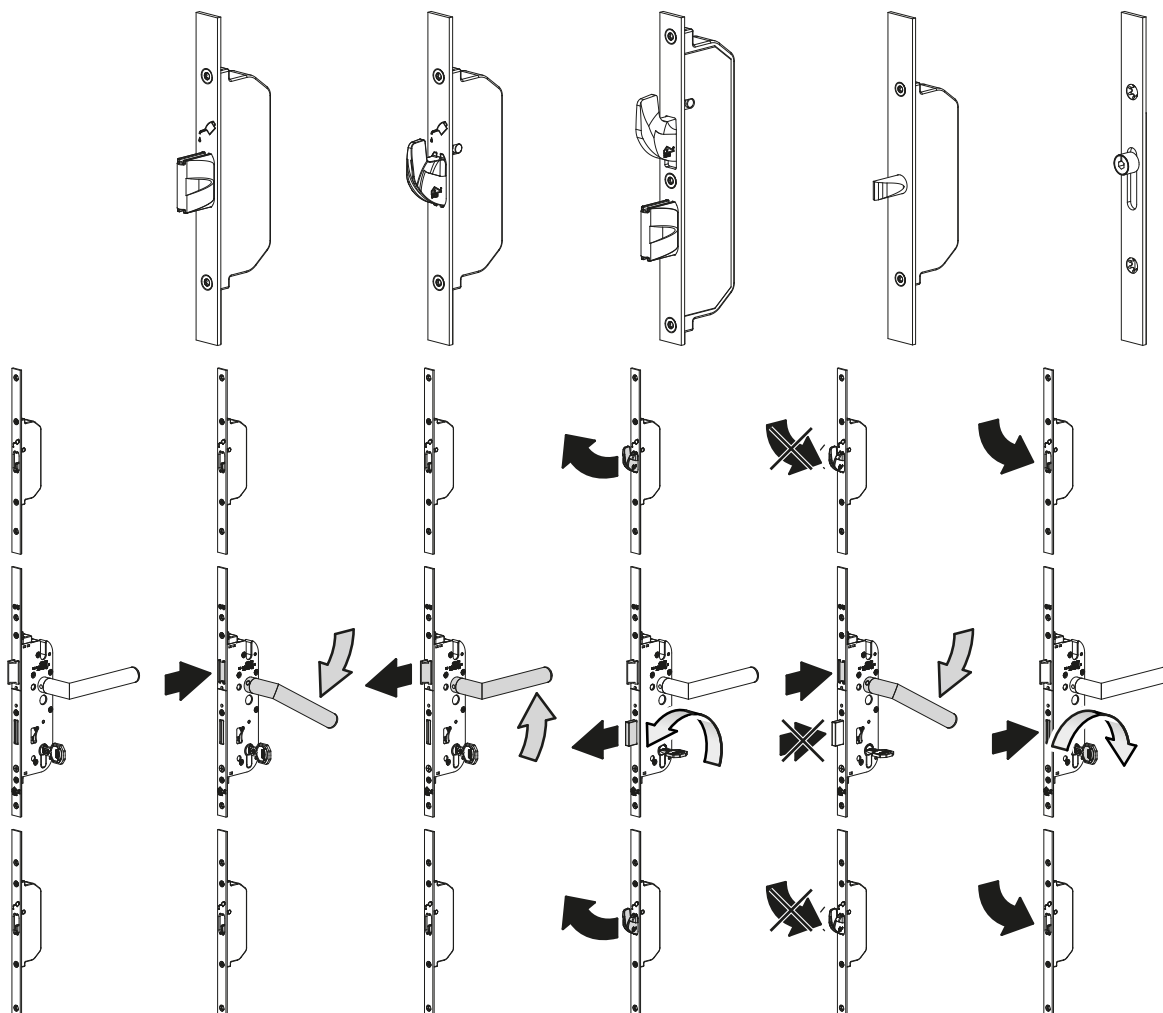
This multi-point locking system combines all the benefits of the SH bolt and MR bolt systems.

Round bolt (SB):

Hardened steel round bolt which is synonymous with security when used in DIN steel door frames.

Roller pin (RZ):

Pin which is used to achieve an optimum door tightness, and can be combined with MR bolts or SH bolts.



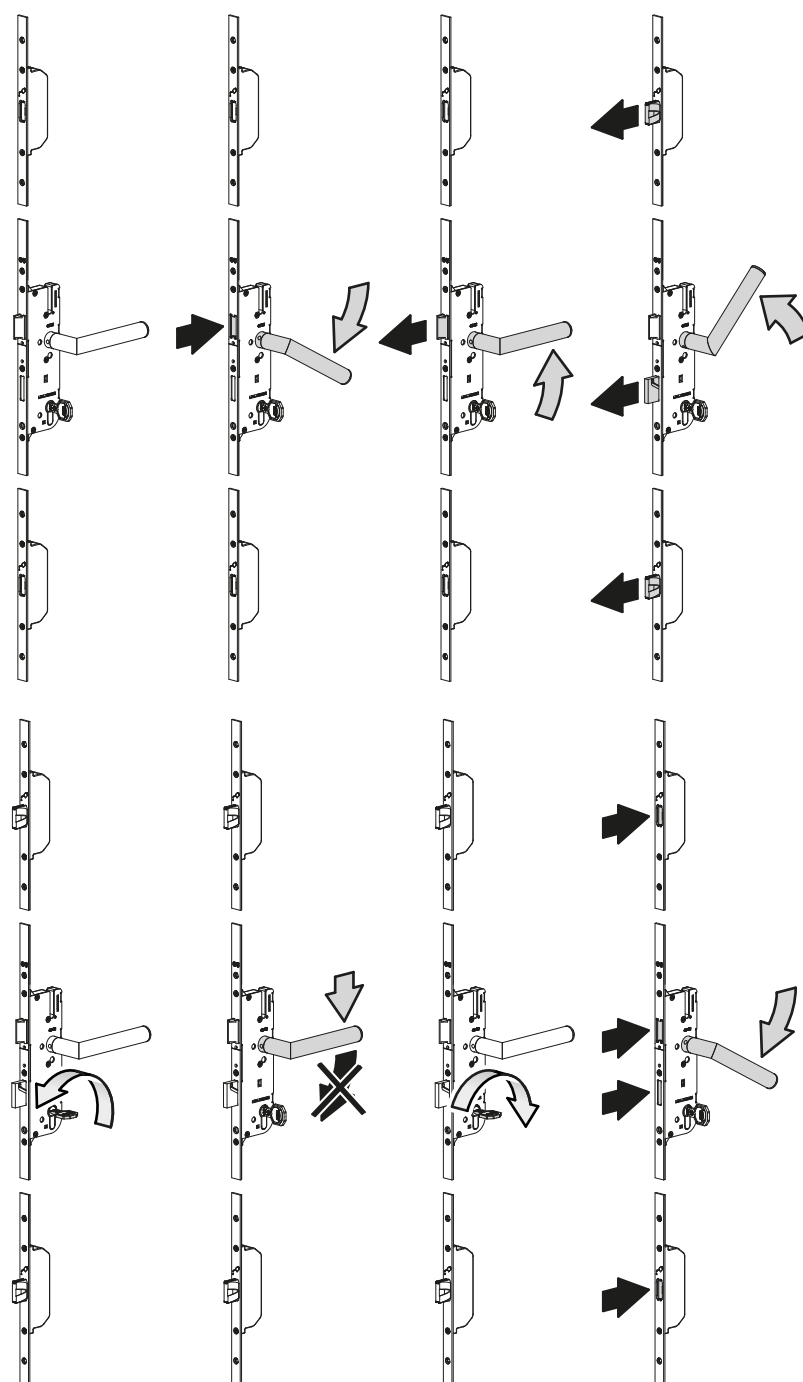
SECURY

GU-SECURY multi-point locks



4.1.7 SECURY-EUROPA (lever-operated)

The SECURY Europa is locked by moving the lever handle up when the door is closed. In this case, the additional deadbolts (MR bolt, DR bolt or SH bolt) and the main deadbolt extend and the optional additional roller pins move to the locked position. To secure the multi-point locking system, the profile cylinder is locked 1x 360° - the lever handle can no longer be operated. The door is unlocked by unlocking the profile cylinder again 1x 360° and pressing the lever handle down

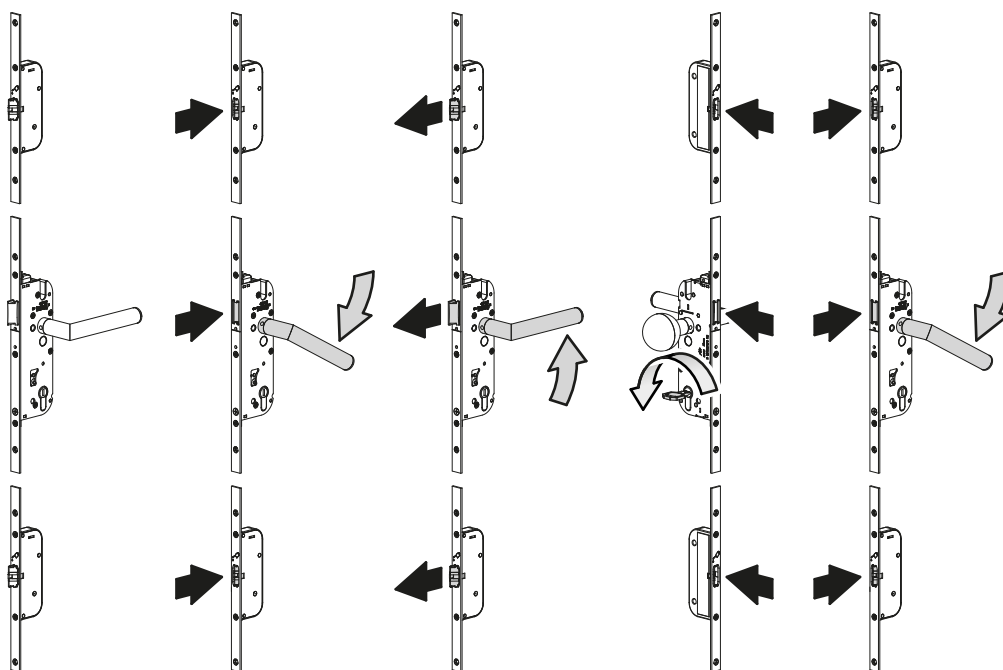


4.2 Panic locks

4.2.1 SECURY Automatic Panik / SECURY Automatic-DR Panik

With the SECURY Automatic panic multi-point locking system, the Automatic latchbolts are thrown 20 mm when the door is pulled shut. They automatically function as deadbolts which are secured against being pushed back. The door leaf can be opened from the inside at any time by operating the lever handle and from the outside only by operating a profile cylinder.

All standard profile cylinders according to DIN 18252 can be used.
(No freewheel cylinder required.)



SECURY

GU-SECURY multi-point locks



4.2.2 SECURY 19 / SECURY 19 ADR

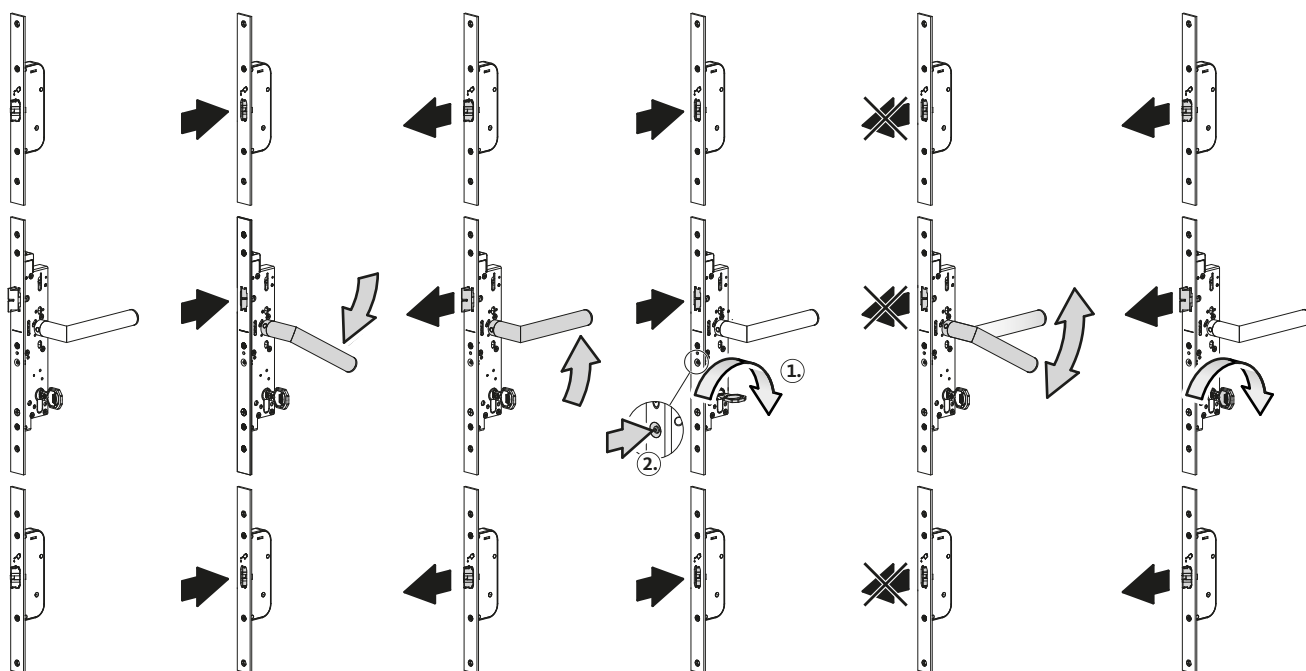
The SECURY 19 multi-point locking system features automatic locking of the latchbolt by an integrated trigger lever. There is no more need to lock the door by key.

The latchbolts retract when the lever handle is operated and throw 10 mm when the lever handle is released. When the door is closed, the latchbolts are thrown 20 mm and secured against being pushed back by force. With 2-leaf doors, the latchbolts are not secured to prevent them from being forced back!

The key-controlled latch holdback (GFF) function is available as an option. To activate this function, the profile cylinder is first of all unlocked then the knob is pressed in, held and the profile cylinder released again. The latchbolts remain withdrawn. The function can subsequently be deactivated and the latchbolts extended by unlocking the profile cylinder.

All standard profile cylinders according to DIN 18252 can be used.
(No freewheel cylinder required.)

For further information see installation instructions C 59 841 030. You can find these at <https://www.g-u.com>



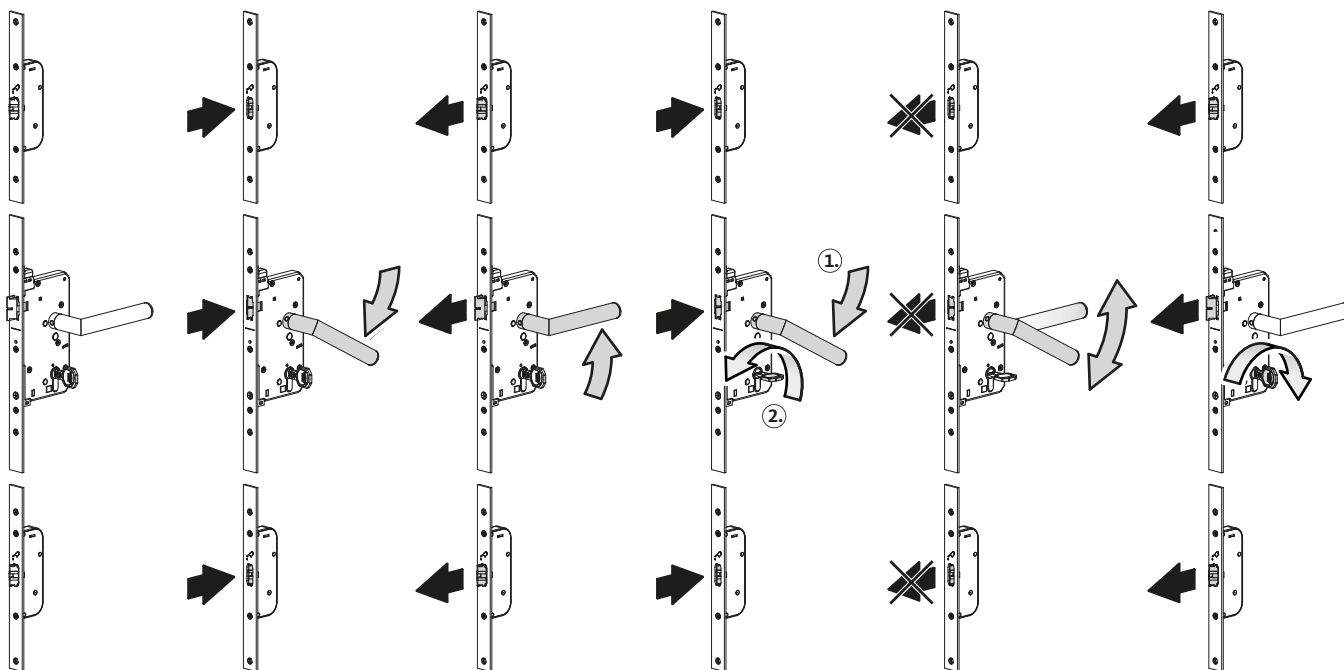
4.2.3 SECURITY 21

The SECURITY 21 multi-point locking system features automatic locking of the latchbolt by an integrated trigger lever. There is no more need to lock the door by key.

The key-controlled latch holdback (GFF) function is available as an option. To activate this function, the lever handle is operated and the profile cylinder locked 1x 360°. The latchbolts remain withdrawn. The function can subsequently be deactivated and the latchbolts extended by unlocking the profile cylinder.

All standard profile cylinders according to DIN 18252 can be used.
(No freewheel cylinder required.)

For further information see installation instructions 0-46600-3A-0. You can find these at <https://www.g-u.com>



SECURY

GU-SECURY multi-point locks



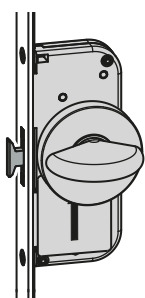
4.3 Safe-T-catch

ATTENTION

Do not lock the safe-T-catch when the door is open! This could lead to damage when closing!

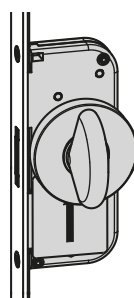
ATTENTION

Never operate the lever handle at the same time as the safe-T-catch!



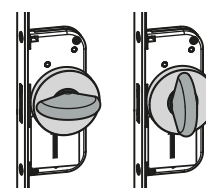
Activation

In the locked position on the inside, it engages with the safe-T-catch



Deactivation

The unlocking position on the inside releases the safe-T-catch.



* The position of the safe-T-catch thumbturn depends on the installation of the customer!

- Activation: bring safe-T-catch thumbturn into the horizontal position (*) when the door is closed.
- Deactivation: bring safe-T-catch thumbturn into the vertical position (*) when the door is closed.

When activated, the catch engages and only allows the door leaf to be opened by a small amount. This enables the user to communicate with somebody on the other side of the door without opening it.

Mounted safe-T-catch

When the safe-T-catch thumbturn (inside) is operated, the safe-T-catch function is activated or deactivated. The following points must be observed in this case:

- The doors must be closed.
- The safe-T-catch thumbturn must not be blocked.

Unlocking the safe-T-catch from the outside

Lock then unlock the lock via the profile cylinder with the safe-T-catch activated (this function is only available when the safe-T-catch is installed by GU directly at the factory).

NOTE

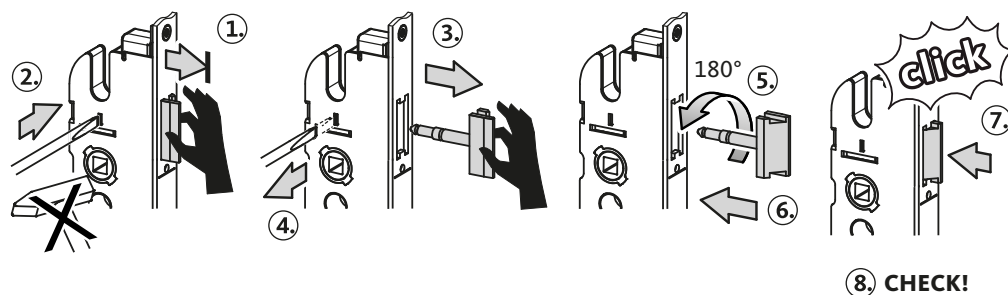
Only safe-T-catches that are installed at the factory can be unlocked from the outside! This is not possible with retrofitted safe-T-catches!

Optional safe-T-catch

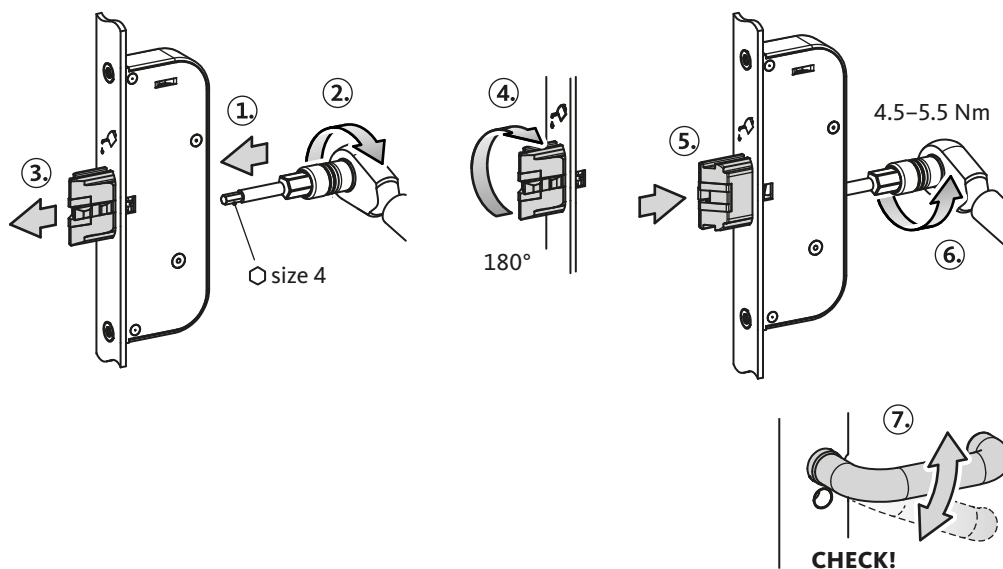
For more information see installation instructions 0-48664-L0-0.

4.4 Changing the DIN direction of the latch

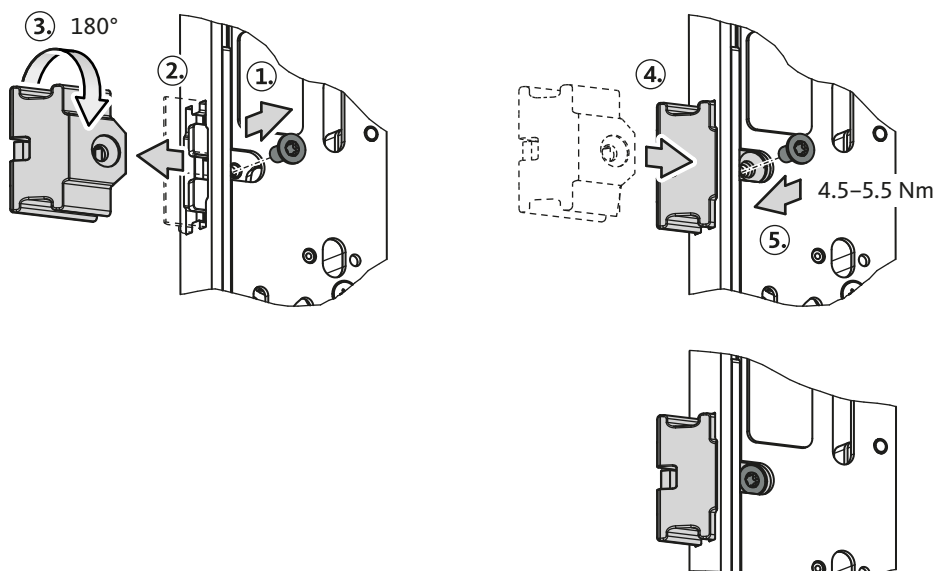
4.4.1 Changeover of main latch (10 mm projecting latch)



4.4.2 Changeover of automatic latch



4.4.3 Changeover of central latchbolt (SECURY 19)



SECURY

GU-SECURY multi-point locks

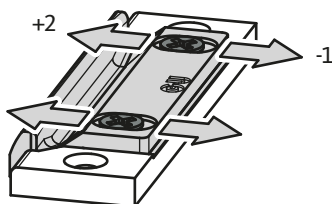


4.5 Adjustment of latch keeper

4.5.1 Adjustment of latch keeper on the interchangeable latch piece

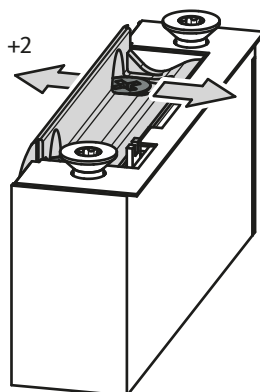
Setting +2 /-1

Existing variants are also possible with a setting of +1 /-1.



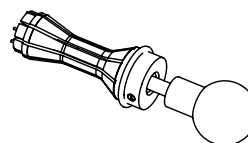
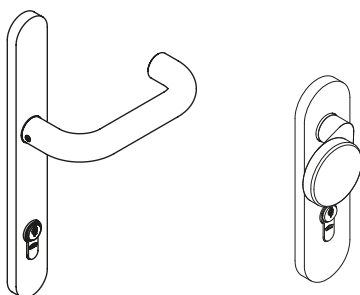
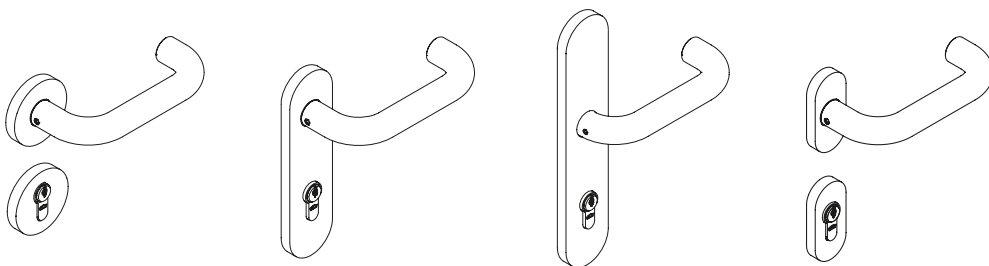
4.5.2 Adjusting the latch keeper on the electric strike

Possible setting

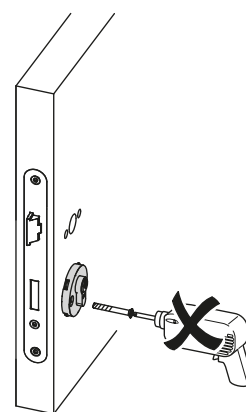
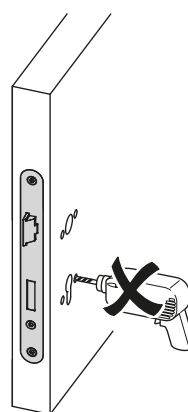
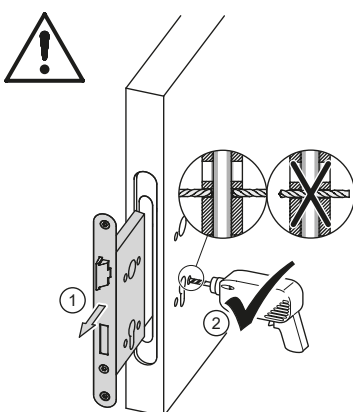


4.6 Rosettes and lever sets

See installation instructions C59700001

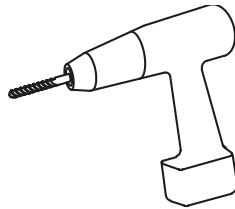
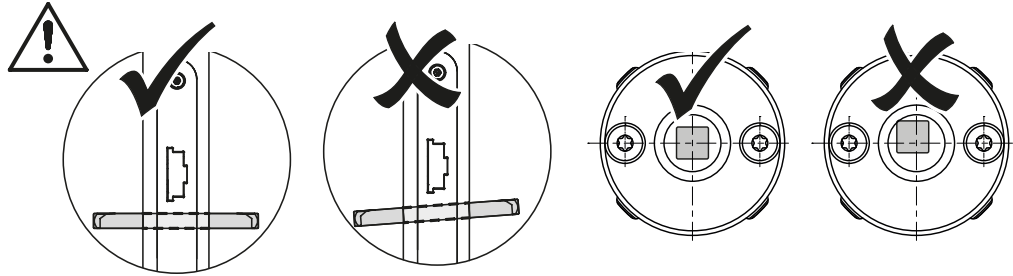


Disassembly tool for maintenance-free lever handle bearing set B-78680-10-0-0

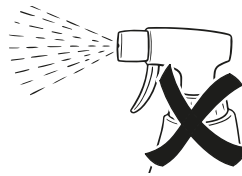


Publisher:
Gretsch-Unitas GmbH
Baubeschlage
Johann-Maus-Str. 3
71254 Ditzingen
Germany
Tel. +49 71 56 3 01-0
Fax +49 71 56 3 01-293

www.g-u.com



Ø 8.5



5. Warranty

The statutory warranty periods and General Terms and Conditions of Sale and Delivery of Gretsch-Unitas GmbH Baubeschlage (www.g-u.com) apply.

6. Disposal

Packaging materials must be recycled.

The product can be fully recycled as scrap metal. Dispose of the product as scrap metal.

The applicable environmental protection regulations must be complied with.

Securing technology for you

